

# Massachusetts Acute Care Hospital Readmissions Profile: July, 2012 to June, 2013

## Fairview Hospital

### September 2015

In June, 2015 the Center for Health Information and Analysis (CHIA) released [Hospital-Wide Adult All-Payer Readmissions in Massachusetts: 2011-2013](#), its first annual report on hospital-wide all cause readmissions in the Commonwealth. That report applied the Hospital-Wide All-Cause Unplanned 30-day Readmission Measure developed by the Centers for Medicare and Medicaid Services (CMS) and the Yale Center for Outcomes Research to the adult all-payer population in the Commonwealth. It included detailed readmission statistics for the state as a whole and hospital-specific readmission rates for 62 acute-care hospitals. This readmission profile series provides more in-depth information on each hospital.

This profile contains readmission statistics for Fairview Hospital presented in the context of the statewide figures and of the patient population that Fairview serves. CHIA hopes that these reports will be useful to hospitals and to other stakeholders working to reduce readmissions in the Commonwealth. The profile is based on data submitted by Massachusetts acute-care hospitals to CHIA's Hospital Discharge Database (see [www.chiamass.gov/case-mix-data/](http://www.chiamass.gov/case-mix-data/)).

It is important to note a few features of the Yale/CMS readmissions methodology as modified by CHIA for Massachusetts reporting.

- The calculations reflect the all-payer population. CMS reports on Medicare Fee-for-Service patients only.
- Readmissions from Fairview back to Fairview as well as those back to other acute-care hospitals in the Commonwealth are included.
- The calculations exclude primary psychiatric and obstetric discharges.
- The calculations include adults (age 18+) only.
- This profile primarily covers the state fiscal year FY13, from July, 2012 to June, 2013. Some data displays include the three-year period from July, 2010 to June 2013.
- Breakouts with fewer than 11 data points (e.g. discharges, readmissions, or patients) are suppressed to protect patient privacy.

*Please note, the bar graph on frequent users (page 6 top) and the bar graphs for payer and discharge setting (page 3 right) have been updated to ensure consistency in calculation methods across different CHIA readmissions data products. For definitions of the terms and methodology used in this report please see the statewide report.*

It is important to note that with the exception of the table on this page and the first figure on the next, the readmission rates reported here are not risk-adjusted. The patterns and trends reported in this profile reflect this hospital's patient case-mix, practice patterns, and any licensure for providing specialized inpatient services.

This report contains the following information profiling readmissions at Fairview. Except where indicated below, all displays cover the period from July 2012 to June 2013.

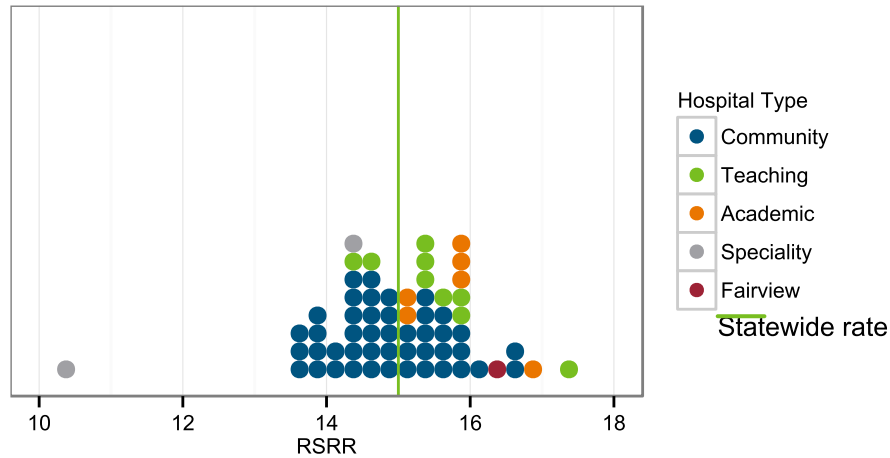
- [Overview readmissions statistics](#)
- [Risk-standardized readmission rates by hospital type](#)
- [Readmission rates by quarter \(July 2010 to June 2013\)](#)
- [Number of readmissions by time since discharge](#)
- [Readmission rates by age](#)
- [Readmission rates by payer type](#)
- [Readmission rates by discharge setting](#)
- [Diagnoses with the highest numbers and rates of readmissions](#)
- [Readmissions to other hospitals](#)
- [Readmissions among frequently hospitalized patients \(July 2010 to June 2013\)](#)
- [Detailed readmission figures for quarter, payer type, and discharge setting](#)

### Overview Readmissions Statistics, July 2012 to June 2013

This table contains the overall readmission statistics for Fairview. The statewide figures are provided for comparison.

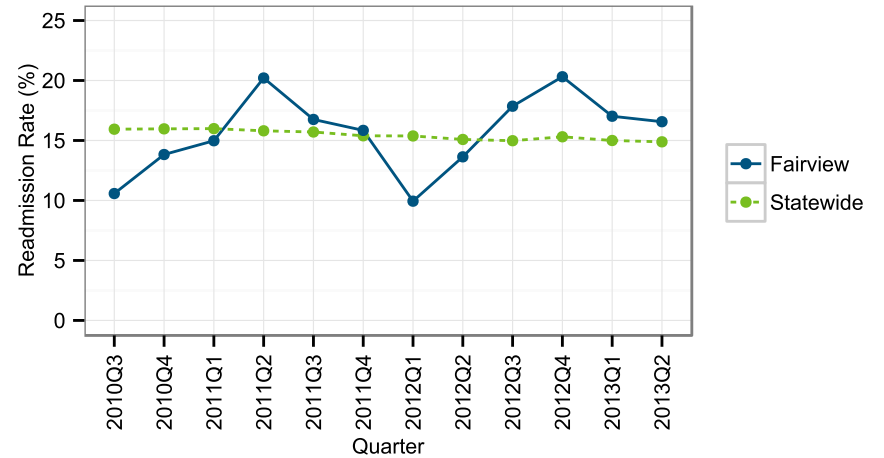
	Fairview	Statewide
<b>Eligible Discharges</b>	739	508,354
<b>Readmissions</b>	133	76,481
<b>Readmission Rate</b>	18.0%	15.0%
<b>Risk-Standardized Readmission Rate</b>	16.5%	15.0%

### All-Payer Risk-Standardized Readmission Rates by Hospital Type, July 2012 to June 2013



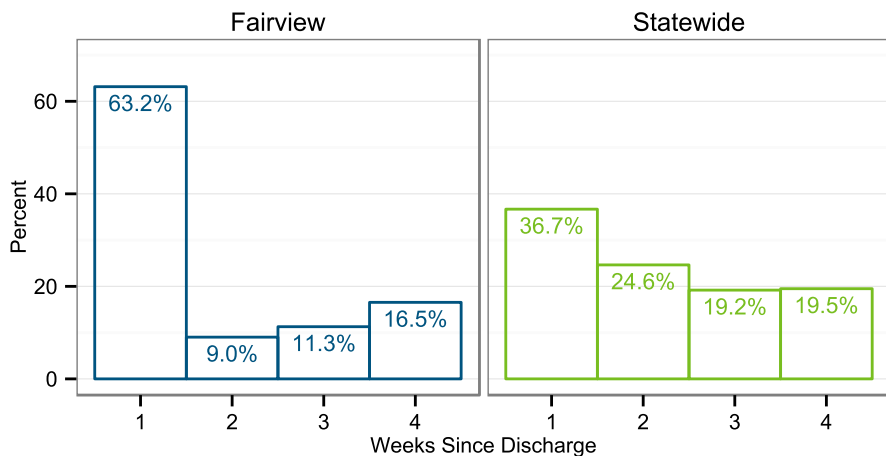
This graph shows the distribution of risk-standardized readmission rates for hospitals. Fairview is indicated by the red dot. Please see the statewide report for information on how hospital types are defined.

### All-Payer Readmission Rate by Quarter, July 2010 to June 2013



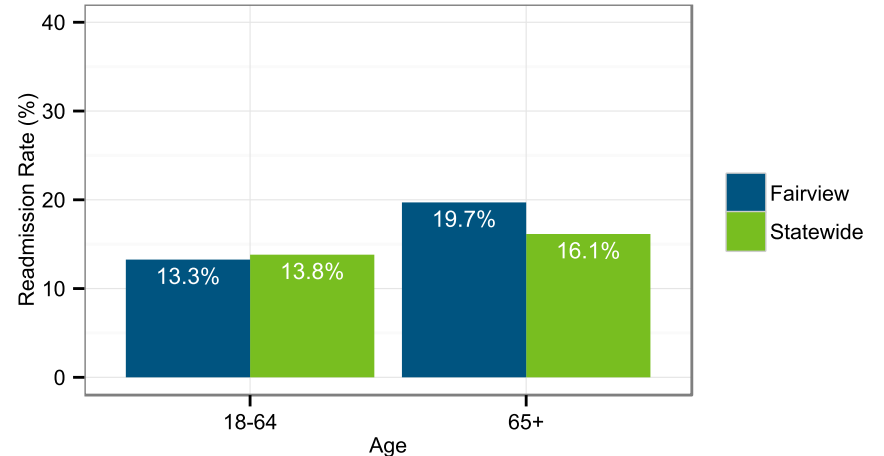
This graph shows the readmission rate for Fairview over time in comparison to the statewide rate.

### Length of Time Between Discharge and Readmission, July 2012 to June 2013



These plots show the percentage of readmissions by week from the time of the initial discharge.

### All-Payer Readmission Rates by Age, July 2012 to June 2013



This graph shows readmission rates by age for Fairview and for the state.

## All-Payer Readmission Rate by Payer Type, July 2012 to June 2013

This graph has been suppressed due to small cell sizes.

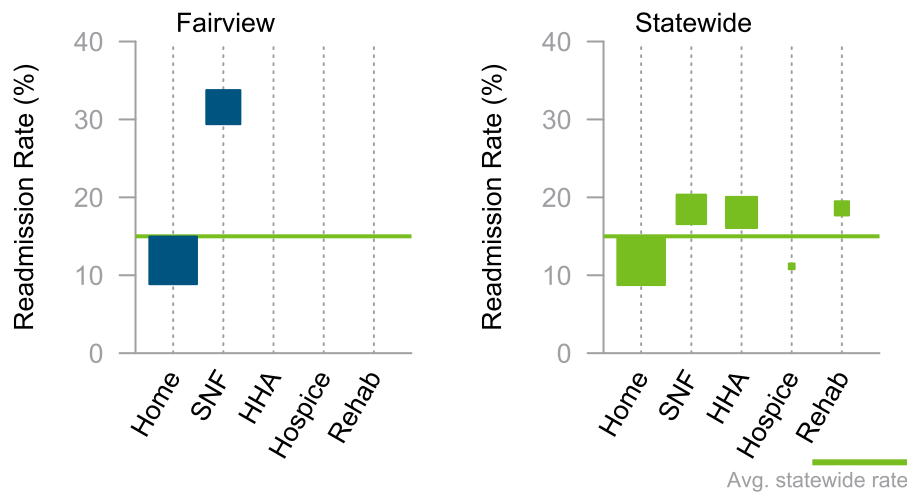
These plots show hospital and statewide readmissions broken out by the expected payer type. Vertical position of the box indicates the rate, and the size of the box is proportional to the number of readmissions.

## Payer Type Profile, July 2012 to June 2013

This graph has been suppressed due to small cell sizes.

This chart compares the payer profile of discharges from Fairview that resulted in a readmission to the payer profile of all eligible discharges at Fairview. Note: "Self-Pay" and "Other" categories not shown.

## All-Payer Readmission Rate by Discharge Setting, July 2012 to June 2013



This graph shows readmission rate by the setting to which the patient was originally discharged. Note: SNF = skilled nursing facility, HHA = home with home health agency care.

## Discharge Setting Profile, July 2012 to June 2013

This graph has been suppressed due to small cell sizes.

This graph shows the distribution of discharge settings for readmission discharges compared to all the eligible discharges at Fairview. Cells with < 11 cases are suppressed to protect patient privacy (indicated by "--").

## Top Diagnoses with Highest Rates of Readmission, July 2012 to June 2013

This graph has been suppressed due to small cell sizes.

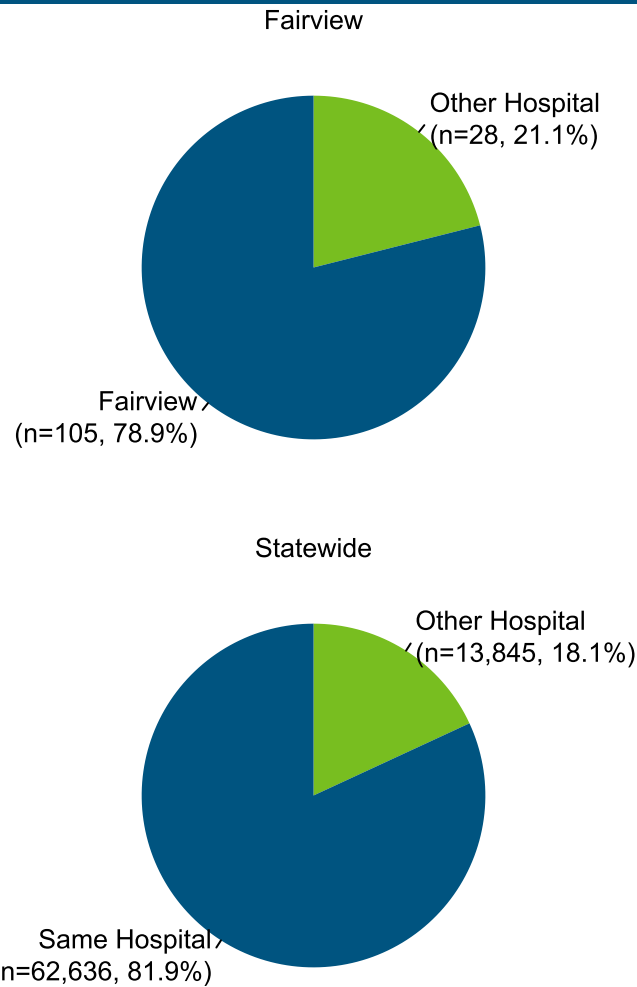
This plot shows the 10 discharge conditions with the highest rates of readmissions for Fairview and corresponding figures for those conditions statewide. Note: Only conditions with 25 or more discharges and 11 or more readmissions are included.

## Top Diagnoses with Highest Numbers of Readmissions, July 2012 to June 2013

This graph has been suppressed due to small cell sizes.

These plots show the 10 discharge conditions with the highest numbers of readmissions at Fairview and the corresponding figures for those conditions statewide. The outlined bars represent the total number of discharges for each diagnosis, and the filled-in bars show the number of readmissions. The figures next to each bar give the readmissions rate. Note: Only conditions with 25 or more discharges and 11 or more readmissions are included.

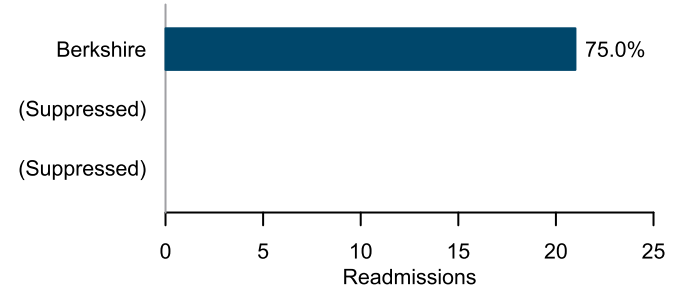
## Readmissions to Other Hospitals, July 2012 to June 2013



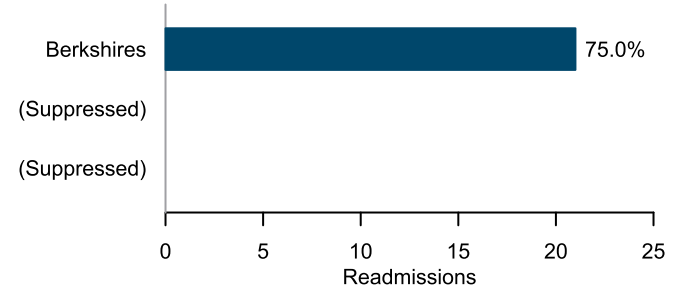
This figure shows the proportion of the readmissions from Fairview that were to another hospital, along with the corresponding statewide figure.

## Characteristics of Readmissions to Other Hospitals, July 2012 to June 2013

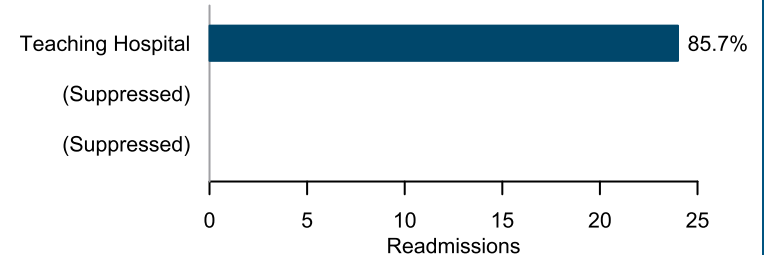
### Readmissions to Top 3 Other Hospitals



### Readmissions to Other Hospitals by Hospital Region

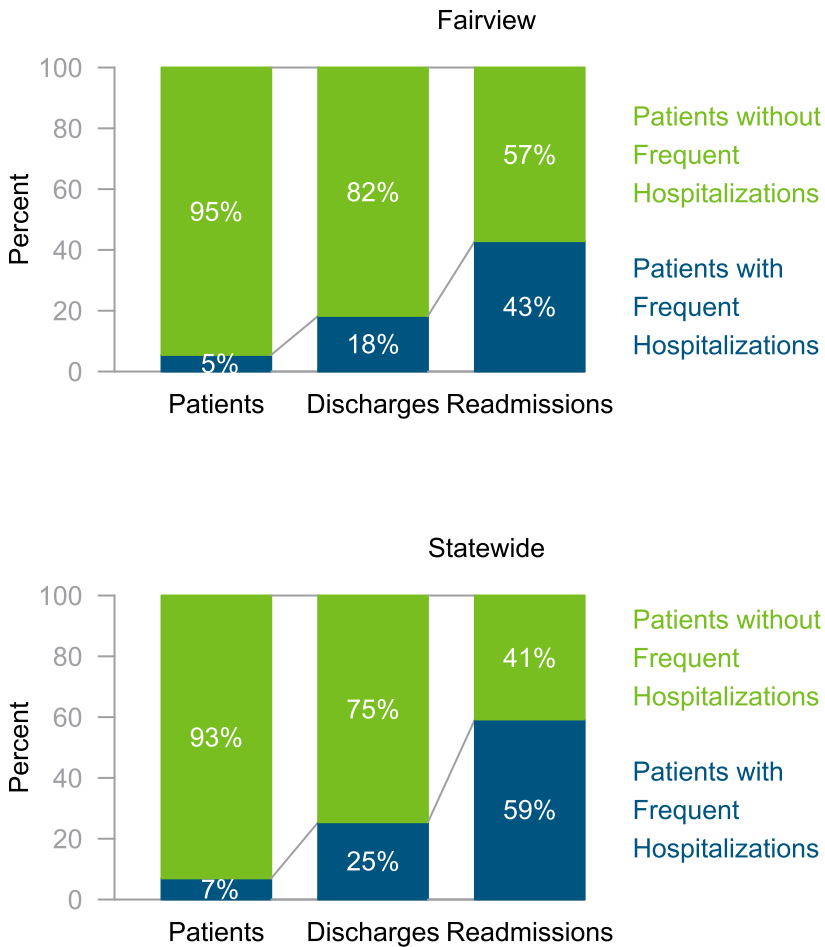


### Readmissions to Other Hospitals by Hospital Type



This display provides more information on discharges from Fairview in which the patient was subsequently readmitted to another hospital. The top portion of the figure shows the top three other hospitals to which patients from Fairview were readmitted. The middle portion shows the regions in which these patients were readmitted. The bottom portion shows the types of hospitals to which they were readmitted. The percentage for each bar represents the percentage that group represents of the total number of readmissions from Fairview that were readmitted to other hospitals. Due to data privacy concerns, only groups with 11 or more readmissions are listed. For definitions of the geographic regions, please see the statewide report.

## All-Payer Readmissions among Frequently Hospitalized Patients, July 2010 to June 2013



In the statewide report, CHIA reported readmissions for frequently hospitalized patients, defined as those with four or more admissions in any one-year period from July 2010 to June 2013. This chart shows the percentage of patients, discharges, and readmissions accounted for by frequently hospitalized patients at Fairview.

## Hospital Readmissions among Frequently Hospitalized Patients by Payer Type, July 2010 to June 2013

	Number of Patients	Percentage within Group	Number of Discharges	Number of Readmissions	Readmission Rate (%)
<b>Patients with Frequent Hospitalizations</b>	75	100.0%	420	154	36.7%
Commercial	--	--	37	14	37.8%
Medicare	65	86.7%	355	129	36.3%
Medicaid	--	--	16	--	--
<b>Patients without Frequent Hospitalizations</b>	1,297	100.0%	1,875	205	10.9%
Commercial	272	21.0%	318	--	--
Medicare	835	64.4%	1,324	177	13.4%
Medicaid	114	8.8%	147	13	8.8%
<b>Total Patients</b>	1,372		2,295	359	15.6%

This table shows the breakdown of patients at Fairview with frequent hospitalizations by payer type, and the associated readmission rates for these groups. Note: Percentages within groups do not sum to 100 because the table excludes "Self-Pay" and "Other" categories which together sum to less than 5% of discharges. Patients with frequent hospitalizations are defined as those with four or more admissions in any one-year period from July 2010 to June 2013. Cells with fewer than 11 cases are suppressed to protect patient privacy and are indicated by dashes.

## Detailed Readmissions Figures

This table contains breakouts of readmission rates by payer type, quarter, and discharge setting. Statistics for groups with fewer than 11 cases are excluded to protect patient privacy, and are indicated by dashes.

Characteristic	Fairview			Statewide		
	Number of Discharges	Number of Readmissions	Readmission Rate (%)	Number of Discharges	Number of Readmissions	Readmission Rate (%)
<b>Overall, July 2012 to June 2013</b>						
Overall	739	133	18.0%	508,354	76,481	15.0%
<b>Age, July 2012 to June 2013</b>						
18-64	196	26	13.3%	240,507	33,233	13.8%
65+	543	107	19.7%	267,847	43,248	16.1%
<b>Year and Quarter, July 2010 to June 2013</b>						
2010Q3	208	22	10.6%	134,869	21,499	15.9%
2010Q4	188	26	13.8%	136,216	21,753	16.0%
2011Q1	227	34	15.0%	136,669	21,851	16.0%
2011Q2	193	39	20.2%	137,362	21,712	15.8%
2011Q3	191	32	16.8%	133,936	21,038	15.7%
2011Q4	202	32	15.8%	133,129	20,490	15.4%
2012Q1	171	17	9.9%	133,659	20,553	15.4%
2012Q2	176	24	13.6%	131,942	19,904	15.1%
2012Q3	196	35	17.9%	127,337	19,077	15.0%
2012Q4	192	39	20.3%	127,928	19,583	15.3%
2013Q1	188	32	17.0%	127,151	19,071	15.0%
2013Q2	163	27	16.6%	125,938	18,750	14.9%
<b>Payer Type, July 2012 to June 2013</b>						
Medicare	561	116	20.7%	295,261	50,973	17.3%
Medicaid	47	--	--	62,717	10,643	17.0%
Commercial	105	--	--	129,873	12,749	9.8%
<b>Discharge Setting, July 2012 to June 2013</b>						
Home	445	53	11.9%	258,860	30,541	11.8%
SNF	228	72	31.6%	99,346	18,335	18.5%
HHA	45	--	--	110,419	19,946	18.1%
Hospice	--	--	--	3,851	429	11.1%
Rehab	--	0	--	22,988	4,273	18.6%