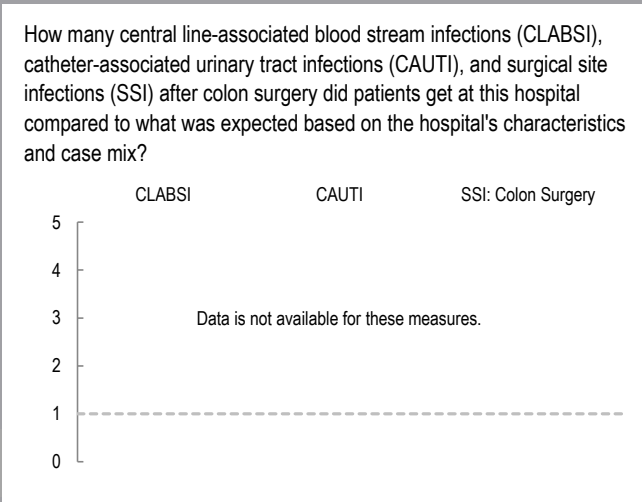
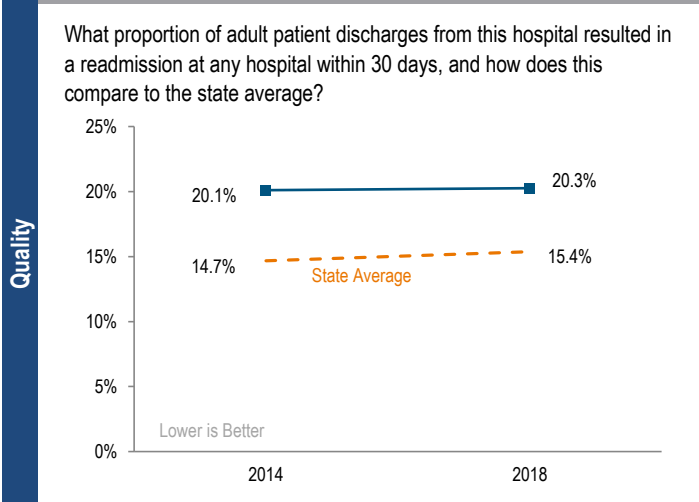
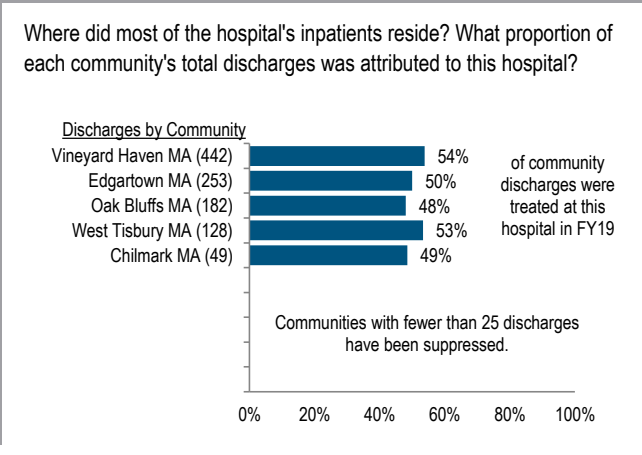
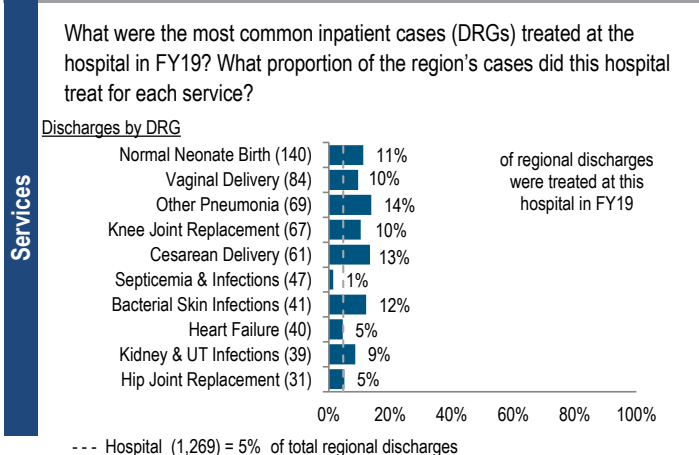


Martha's Vineyard Hospital is a small, non-profit community hospital located in the Cape and Islands region. It is a member of Partners Health Care. Martha's Vineyard Hospital is designated by the Centers for Medicare & Medicaid Services (CMS) as one of three Critical Access Hospitals (CAH) in Massachusetts. Between FY15 and FY19, the volume of inpatient discharges decreased 3.9% compared to a median increase of 7.9% at cohort hospitals. It was profitable each year from FY15 to FY19, with a total margin of 9.7% in FY19, compared to a median total margin of 5.6% among peer cohort hospitals.

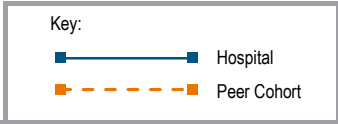
At a Glance	Overview / Size		Payer Mix	
	Hospital System Affiliation:	Partners Health Care	Public Payer Mix:	61.9% (Non-HPP* Hospital)
	Hospital System Surplus (Deficit) in FY19:	\$486,164,000	CY18 Commercial Statewide Relative Price:	1.81
	Change in Ownership (FY15-19):	Not Applicable	Top 3 Commercial Payers:	Blue Cross Blue Shield AllWays Harvard Pilgrim
	Total Staffed Beds:	31, among the smallest acute hospitals	Utilization	
	% Occupancy:	47.1%, < cohort avg. (60%)	Inpatient Discharges in FY19:	1,269
	Special Public Funding:	Not Applicable	Change FY18-FY19:	-5.7%
	Trauma Center Designation:	Not Applicable	Emergency Department Visits in FY19:	14,772
	Change FY18-FY19:	22.0%	Change FY18-FY19:	0.9%
	Case Mix Index:	0.68, < cohort avg. (0.87); < statewide (1.16)	Outpatient Visits in FY19:	62,562
Change FY18-FY19:	16.3%	Change FY18-FY19:	2.0%	
Financial		Quality		
Inpatient NPSR per CMAD:	\$19,293	Readmission Rate in FY18:	20.3%	
Change FY18-FY19:	22.0%	Change FY14-FY18 (percentage points):	0.2	
Inpatient:Outpatient Revenue in FY19:	15%:85%	Early Elective Deliveries Rate:	Not Available	
Outpatient Revenue in FY19:	\$78,838,270			
Change FY18-FY19:	16.3%			
Total Revenue in FY19:	\$103,204,000			
Total Surplus (Deficit) in FY19:	\$9,986,000			



For descriptions of the metrics, please see the technical appendix.

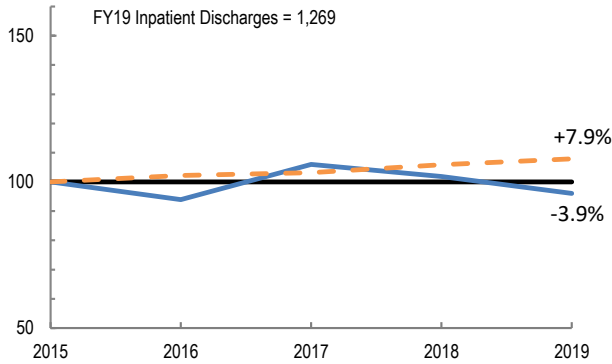
2019 HOSPITAL PROFILE: MARTHA'S VINEYARD HOSPITAL

Cohort: Community Hospital

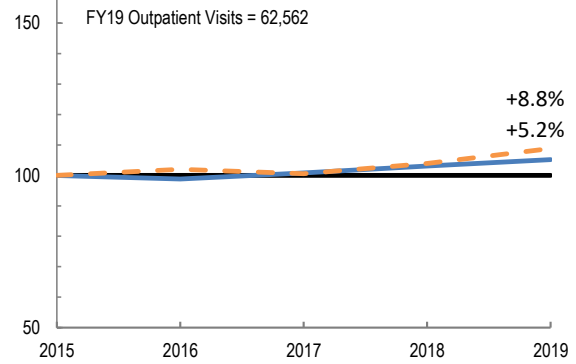


Utilization

How has the volume of the hospital's inpatient discharges changed compared to FY15, and how does this compare to the hospital's peer cohort median? (FY15=100)

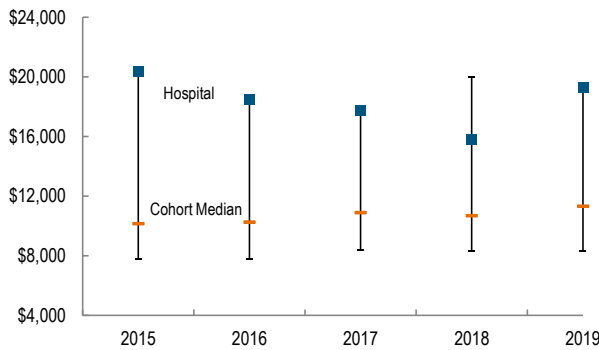


How has the volume of the hospital's outpatient visits changed compared to FY15, and how does this compare to the hospital's peer cohort median? (FY15=100)

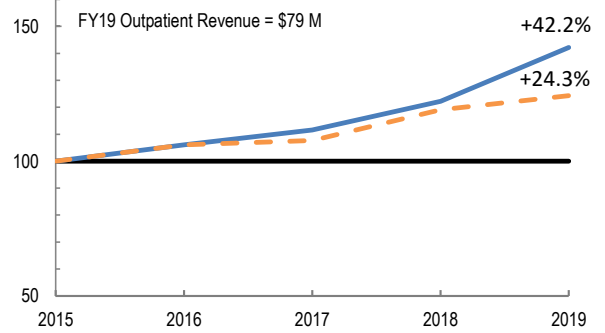


Patient Revenue Trends

What was the hospital's net inpatient service revenue per case mix adjusted discharge between FY15 and FY19, and how does this compare to the hospital's peer cohort median?



How has the hospital's net outpatient revenue changed compared to FY15, and how does this compare to the hospital's peer cohort median? (FY15=100)



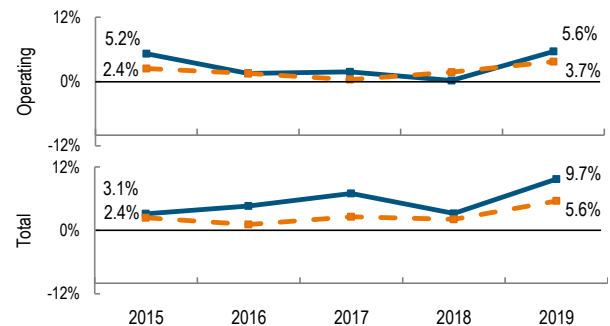
Financial Performance

How have the hospital's total revenue and costs changed between FY15 and FY19?

Revenue, Cost, & Profit/Loss (in millions)

	FY	2015	2016	2017	2018	2019
Operating Revenue		\$ 76.5	\$ 77.6	\$ 85.6	\$ 88.1	\$ 99.0
Non-Operating Revenue		\$ (1.5)	\$ 2.5	\$ 4.7	\$ 2.7	\$ 4.2
Total Revenue		\$ 75.0	\$ 80.1	\$ 90.2	\$ 90.8	\$ 103.2
Total Costs		\$ 72.6	\$ 76.4	\$ 83.9	\$ 87.9	\$ 93.2
Total Profit (Loss)		\$ 2.4	\$ 3.7	\$ 6.3	\$ 2.9	\$ 10.0

What were the hospital's total margin and operating margins between FY15 and FY19, and how do these compare to the hospital's peer cohort medians?



For descriptions of the metrics, please see the technical appendix.

* High Public Payer Hospitals (HPP) receive a minimum of 63% of gross patient service revenue from public payers.