

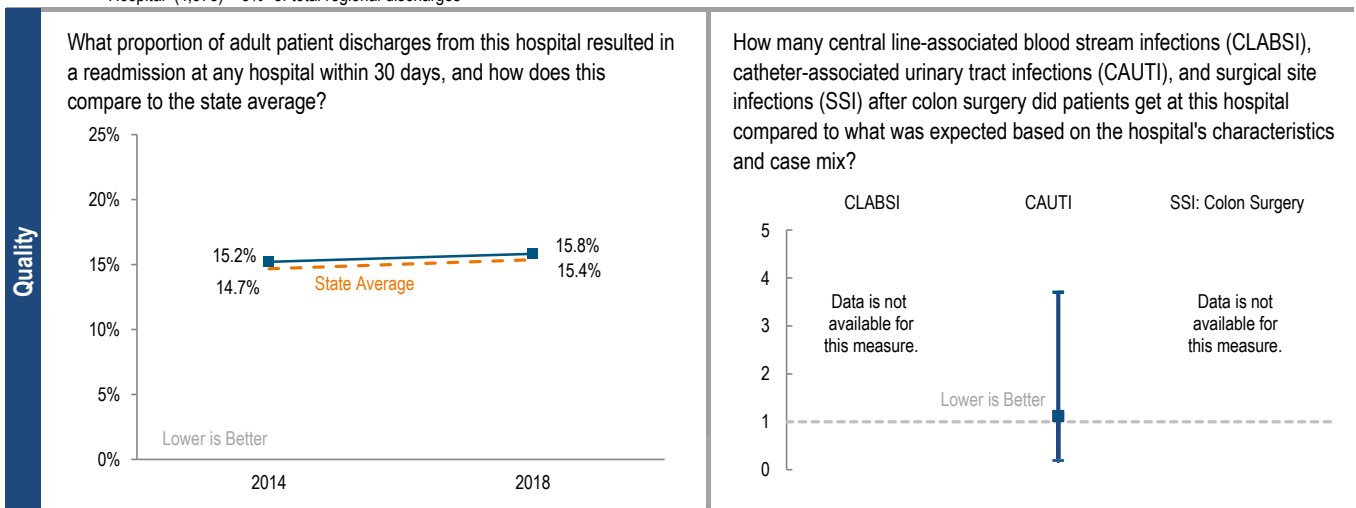
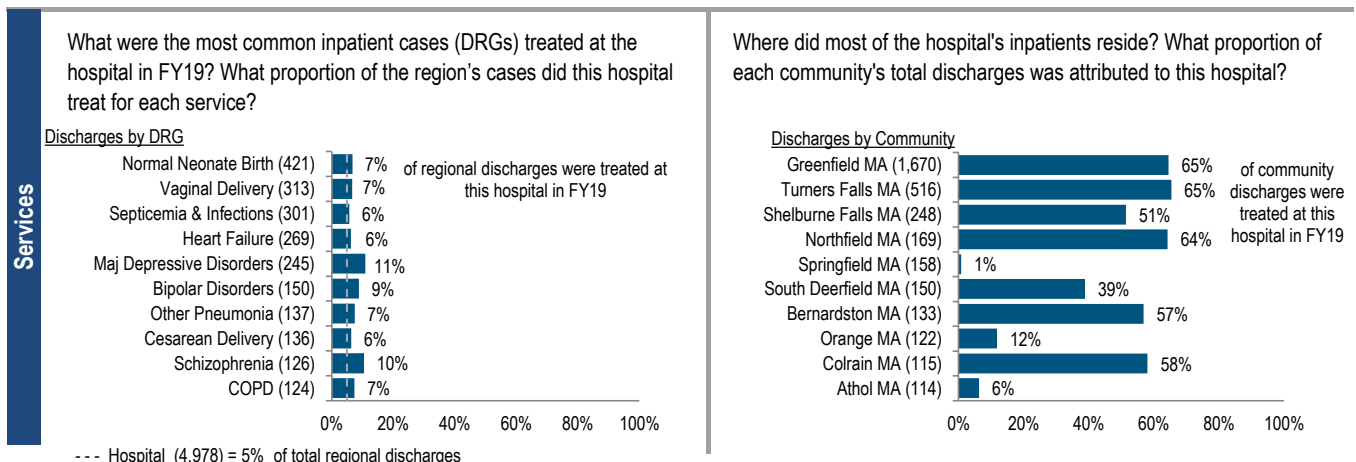
BAYSTATE FRANKLIN MEDICAL CENTER

2019 Hospital Profile

Greenfield, MA
Community-High Public Payer Hospital
Western Massachusetts

Baystate Franklin Medical Center is a mid-size, non-profit community-High Public Payer (HPP) hospital located in the Western Massachusetts region. It is a member of Baystate Health. Between FY15 and FY19, the volume of inpatient discharges at the hospital decreased by 2.2% compared to a median decrease of 2.7% at cohort hospitals. Outpatient visits decreased 28.9% for the hospital between FY15 and FY19, compared to a median increase of 2.1% for its peer cohort. Baystate Franklin Medical Center reported a profit in four of the five years between FY15 and FY19. It reported a profit of 1M in FY19.

At a Glance	Overview / Size	
	Hospital System Affiliation:	Baystate Health
	Hospital System Surplus (Deficit) in FY19:	\$71,003,000
	Change in Ownership (FY15-19):	Not Applicable
	Total Staffed Beds:	107, mid-size acute hospital
	% Occupancy:	50.3%, < cohort avg. (66%)
	Special Public Funding:	CHRTF*
	Trauma Center Designation:	Not Applicable
	Case Mix Index:	0.85, < cohort avg. (0.96); < statewide (1.16)
	Financial	
	Inpatient NPSR per CMAD:	\$9,389
	Change FY18-FY19:	2.8%
	Inpatient:Outpatient Revenue in FY19:	26%:74%
	Outpatient Revenue in FY19:	\$59,507,261
	Change FY18-FY19:	6.1%
	Total Revenue in FY19:	\$106,648,000
	Total Surplus (Deficit) in FY19:	\$1,020,000
	Payer Mix	
	Public Payer Mix:	69.4% (HPP* Hospital)
	CY18 Commercial Statewide Relative Price:	1.11
	Top 3 Commercial Payers:	Blue Cross Blue Shield Health New England UniCare
	Utilization	
	Inpatient Discharges in FY19:	4,978
	Change FY18-FY19:	1.2%
	Emergency Department Visits in FY19:	24,780
	Change FY18-FY19:	-2.8%
	Outpatient Visits in FY19:	32,400
	Change FY18-FY19:	-2.0%
	Quality	
	Readmission Rate in FY18:	15.8%
	Change FY14-FY18 (percentage points):	0.6
	Early Elective Deliveries Rate:	11.1%



For descriptions of the metrics, please see the technical appendix.

2019 HOSPITAL PROFILE: BAYSTATE FRANKLIN MEDICAL CENTER

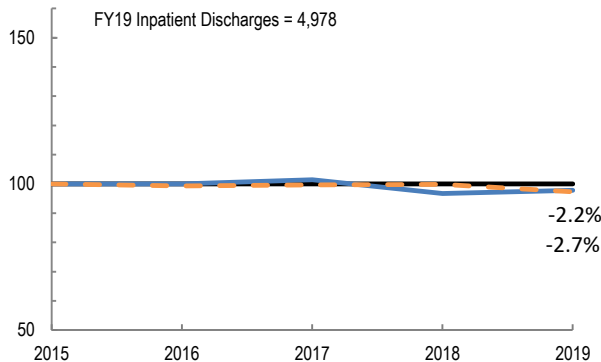
Cohort: Community-High Public Payer Hospital

Key:

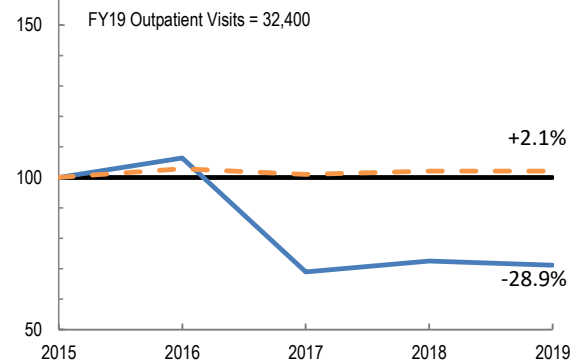


Utilization

How has the volume of the hospital's inpatient discharges changed compared to FY15, and how does this compare to the hospital's peer cohort median? (FY15=100)

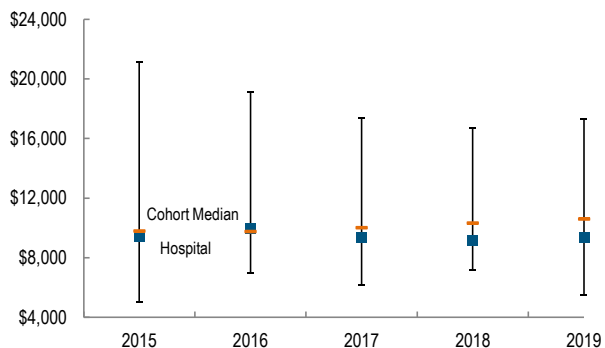


How has the volume of the hospital's outpatient visits changed compared to FY15, and how does this compare to the hospital's peer cohort median? (FY15=100)

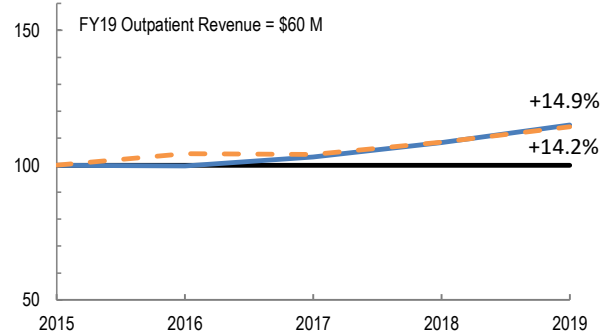


Patient Revenue Trends

What was the hospital's net inpatient service revenue per case mix adjusted discharge between FY15 and FY19, and how does this compare to the hospital's peer cohort median?



How has the hospital's net outpatient revenue changed compared to FY15, and how does this compare to the hospital's peer cohort median? (FY15=100)



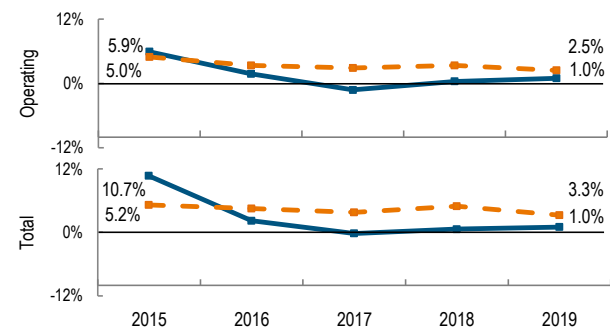
Financial Performance

How have the hospital's total revenue and costs changed between FY15 and FY19?

Revenue, Cost, & Profit/Loss (in millions)

FY	2015	2016	2017	2018	2019
Operating Revenue	\$ 94.5	\$ 98.2	\$ 98.6	\$ 102.7	\$ 106.7
Non-Operating Revenue	\$ 4.7	\$ 0.4	\$ 1.0	\$ 0.2	\$ (0.0)
Total Revenue	\$ 99.3	\$ 98.6	\$ 99.6	\$ 102.9	\$ 106.6
Total Costs	\$ 88.6	\$ 96.4	\$ 99.8	\$ 102.3	\$ 105.6
Total Profit (Loss)	\$ 10.6	\$ 2.2	\$ (0.2)	\$ 0.6	\$ 1.0

What were the hospital's total margin and operating margins between FY15 and FY19, and how do these compare to the hospital's peer cohort medians?



For descriptions of the metrics, please see the technical appendix.

* High Public Payer Hospitals (HPP) receive a minimum of 63% of gross patient service revenue from public payers.

† For more information on Community Hospital Reinvestment Trust Fund (CHRTF) special funding, please contact the Massachusetts Executive Office of Health and Human Services (EOHHS).