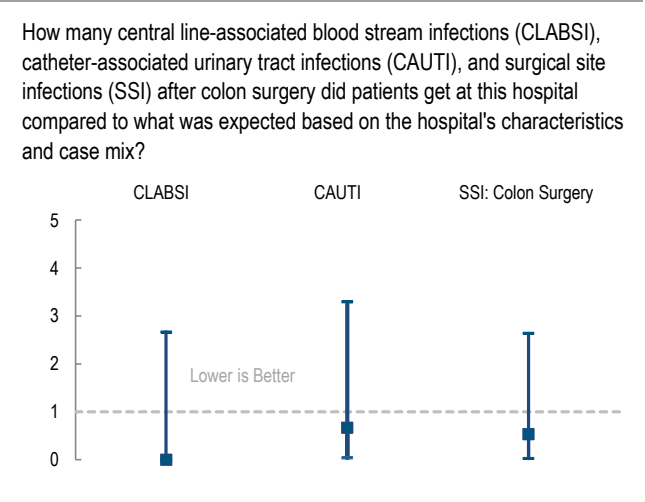
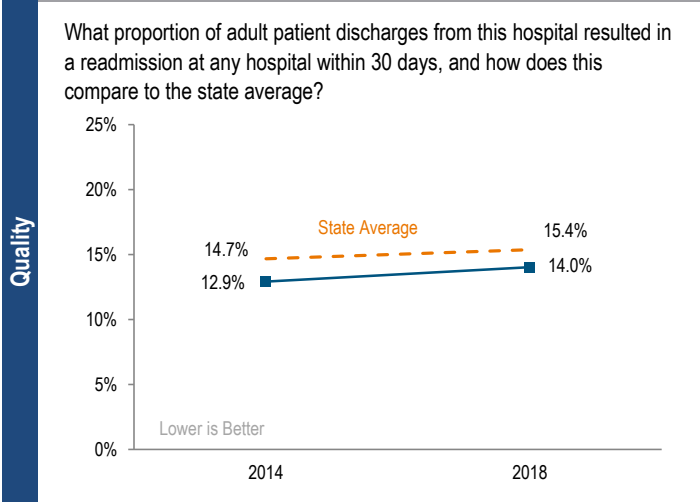
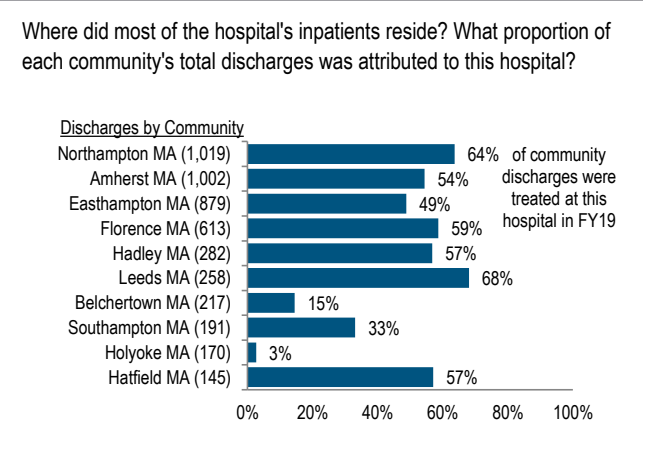
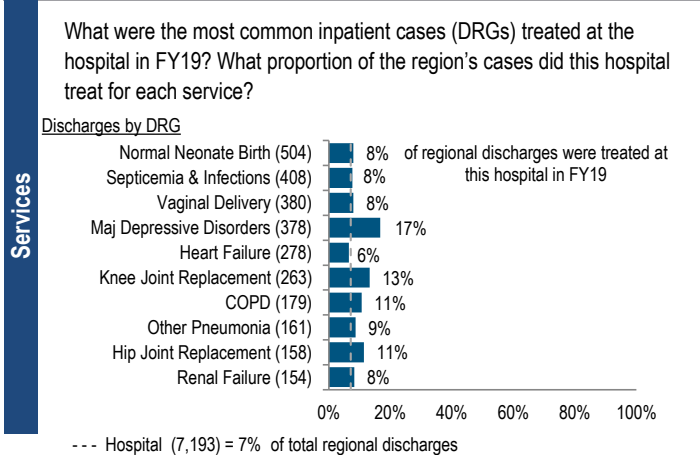


Cooley Dickinson Hospital is a community hospital located in the Western Massachusetts region. It is a mid-size acute hospital and a member of Partners Health Care. Between FY15 and FY19, inpatient discharges at the hospital have increased by 4.3%, compared with a median increase of 7.9% among cohort hospitals. In the same period, outpatient visits increased by 4.7%, compared to an 8.8% median increase in its cohort. After reporting a loss in FY18, Cooley Dickinson Hospital reported a profit of \$15.7M in FY19 and a total margin of 7.6%, compared to a median total margin of 5.6% in its cohort.

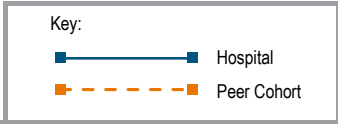
At a Glance	Overview / Size		Payer Mix	
	Hospital System Affiliation:	Partners Health Care	Public Payer Mix:	62.3% (Non-HPP* Hospital)
	Hospital System Surplus (Deficit) in FY19:	\$486,164,000	CY18 Commercial Statewide Relative Price:	1.07
	Change in Ownership (FY15-19):	Not Applicable	Top 3 Commercial Payers:	Blue Cross Blue Shield Health New England UniCare
	Total Staffed Beds:	151, mid-size acute hospital	Utilization	
	% Occupancy:	57.1%, < cohort avg. (60%)	Inpatient Discharges in FY19:	7,193
	Special Public Funding:	CHRTF°	Change FY18-FY19:	1.6%
	Trauma Center Designation:	Not Applicable	Emergency Department Visits in FY19:	33,364
	Change FY18-FY19:	-0.2%	Outpatient Visits in FY19:	53,500
	Case Mix Index:	0.91, > cohort avg. (0.87); < statewide (1.16)	Change FY18-FY19:	0.0%
Financial		Quality		
Inpatient NPSR per CMAD:	\$11,341	Readmission Rate in FY18:	14.0%	
Change FY18-FY19:	7.3%	Change FY14-FY18 (percentage points):	1.1	
Inpatient:Outpatient Revenue in FY19:	31%:69%	Early Elective Deliveries Rate:	0.0%	
Outpatient Revenue in FY19:	\$125,743,658			
Change FY18-FY19:	9.9%			
Total Revenue in FY19:	\$206,633,000			
Total Surplus (Deficit) in FY19:	\$15,656,000			



For descriptions of the metrics, please see the technical appendix.

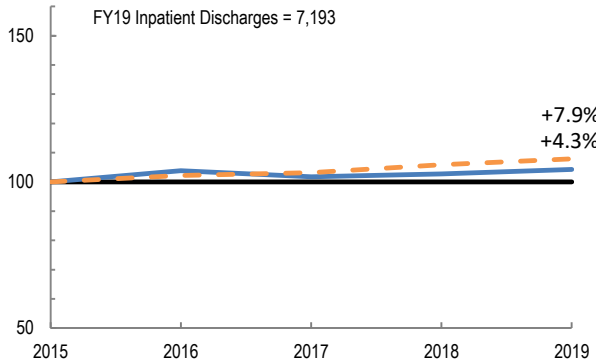
2019 HOSPITAL PROFILE: COOLEY DICKINSON HOSPITAL

Cohort: Community Hospital

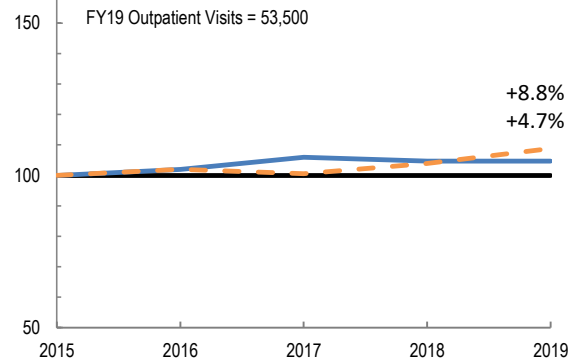


Utilization

How has the volume of the hospital's inpatient discharges changed compared to FY15, and how does this compare to the hospital's peer cohort median? (FY15=100)

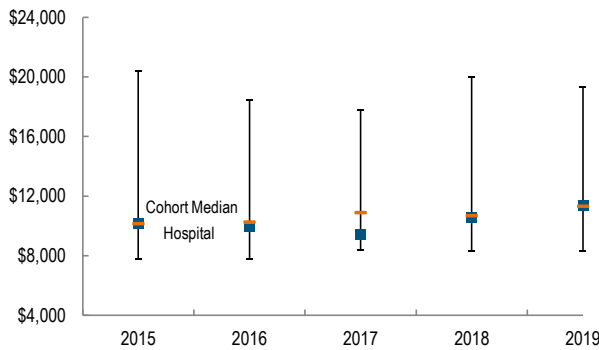


How has the volume of the hospital's outpatient visits changed compared to FY15, and how does this compare to the hospital's peer cohort median? (FY15=100)

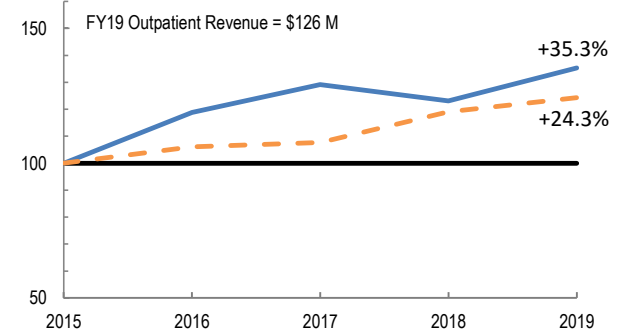


Patient Revenue Trends

What was the hospital's net inpatient service revenue per case mix adjusted discharge between FY15 and FY19, and how does this compare to the hospital's peer cohort median?



How has the hospital's net outpatient revenue changed compared to FY15, and how does this compare to the hospital's peer cohort median? (FY15=100)



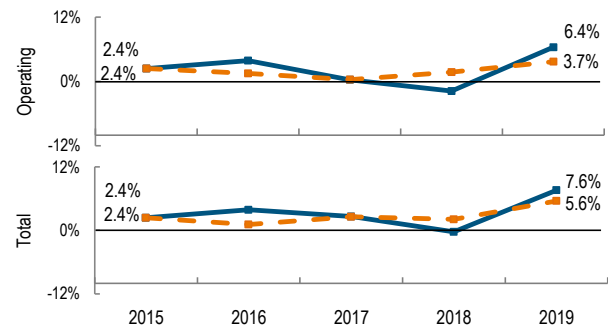
Financial Performance

How have the hospital's total revenue and costs changed between FY15 and FY19?

Revenue, Cost, & Profit/Loss (in millions)

FY	2015	2016	2017	2018	2019
Operating Revenue	\$ 157.5	\$ 178.1	\$ 183.0	\$ 184.5	\$ 204.1
Non-Operating Revenue	\$ (0.1)	\$ 0.1	\$ 4.2	\$ 2.8	\$ 2.5
Total Revenue	\$ 157.4	\$ 178.1	\$ 187.3	\$ 187.2	\$ 206.6
Total Costs	\$ 153.7	\$ 171.2	\$ 182.4	\$ 187.9	\$ 191.0
Total Profit (Loss)	\$ 3.7	\$ 7.0	\$ 4.9	\$ (0.6)	\$ 15.7

What were the hospital's total margin and operating margins between FY15 and FY19, and how do these compare to the hospital's peer cohort medians?



For descriptions of the metrics, please see the technical appendix.

* High Public Payer Hospitals (HPP) receive a minimum of 63% of gross patient service revenue from public payers.

† For more information on Community Hospital Reinvestment Trust Fund (CHRTF) special funding, please contact the Massachusetts Executive Office of Health and Human Services (EOHHS).