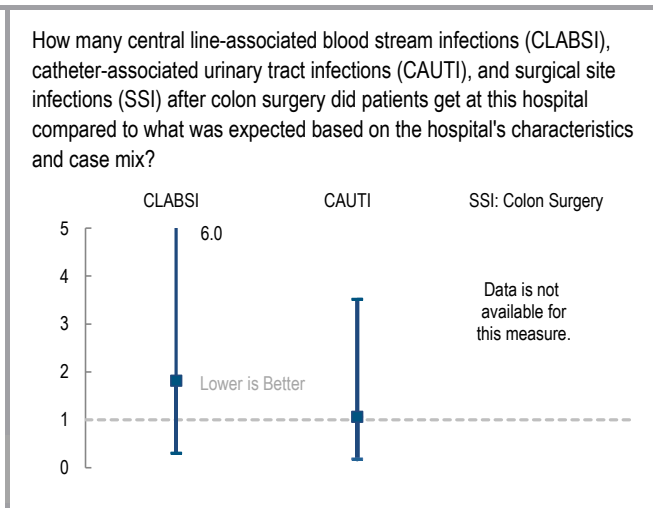
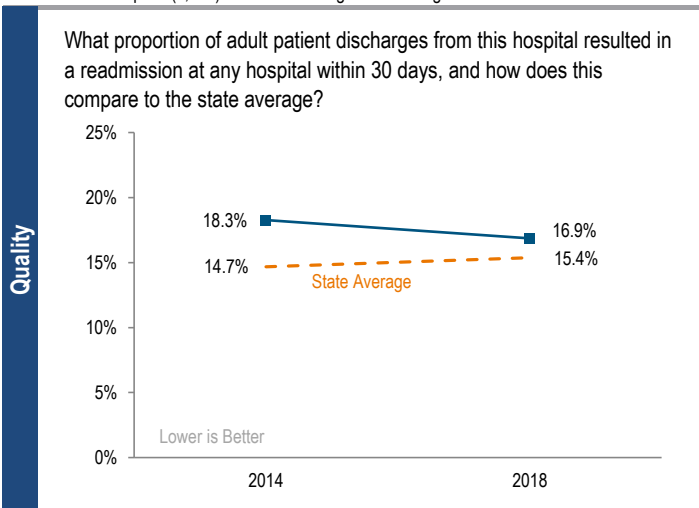
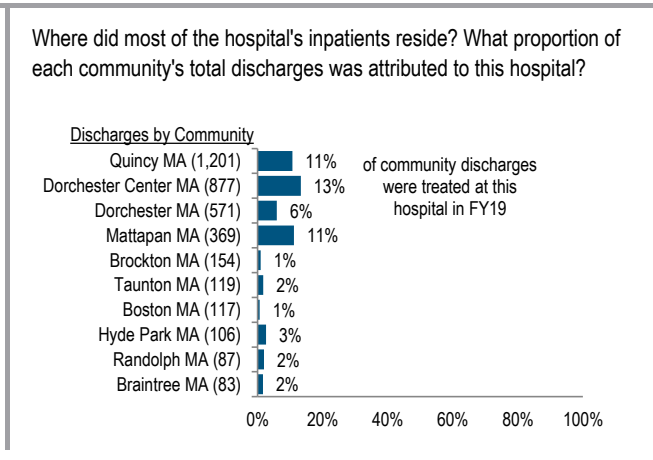
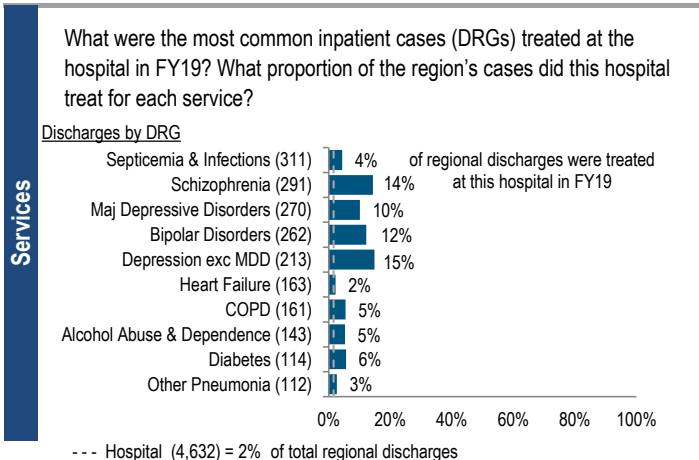


Steward Carney Hospital is a for-profit teaching hospital located in the Metro Boston region. Steward Carney is a member of Steward Health Care. Between FY15 and FY19, the volume of inpatient discharges at the hospital decreased by 6.6% compared to a median decrease of 1.5% at cohort hospitals. Outpatient visits decreased by 17.2% for the hospital between FY15 and FY19, compared to a median decrease of 1.5% for its peer cohort. Steward Carney reported a loss in each of the last five years, including a loss of \$16.8M in FY19 and a total margin of -14.2%, compared with a median total margin of 9.0% in its cohort. Its operating and total margins were below the cohort medians in each year during this period.

Overview / Size		Payer Mix	
Hospital System Affiliation:	Steward Health Care	Public Payer Mix:	77.3% (HPP* Hospital)
Hospital System Surplus (Deficit) in FY19:	Steward Failed to Submit	CY18 Commercial Statewide Relative Price:	0.89
Change in Ownership (FY15-19):	Not Applicable	Top 3 Commercial Payers:	Blue Cross Blue Shield Harvard Pilgrim Tufts HMO
Total Staffed Beds:	83, among the smaller acute hospitals	<b>Utilization</b>	
% Occupancy:	85.4%, > cohort avg. (79%)	Inpatient Discharges in FY19:	4,632
Special Public Funding:	CHRTF°	Change FY18-FY19:	-2.5%
Trauma Center Designation:	Not Applicable	Emergency Department Visits in FY19:	50,454
Case Mix Index:	0.98, < cohort avg. (1.15); < statewide (1.16)	Change FY18-FY19:	-4.4%
<b>Financial</b>		Outpatient Visits in FY19:	85,344
Inpatient NPSR per CMAD:	\$11,375	Change FY18-FY19:	-8.7%
Change FY18-FY19:	3.8%	<b>Quality</b>	
Inpatient:Outpatient Revenue in FY19:	32%:68%	Readmission Rate in FY18:	16.9%
Outpatient Revenue in FY19:	\$55,120,415	Change FY14-FY18 (percentage points):	-1.4
Change FY18-FY19:	4.2%	Early Elective Deliveries Rate:	Not Applicable
Total Revenue in FY19:	\$118,308,642		
Total Surplus (Deficit) in FY19:	-\$16,781,632		



For descriptions of the metrics, please see the technical appendix.

# 2019 HOSPITAL PROFILE: STEWARD CARNEY HOSPITAL

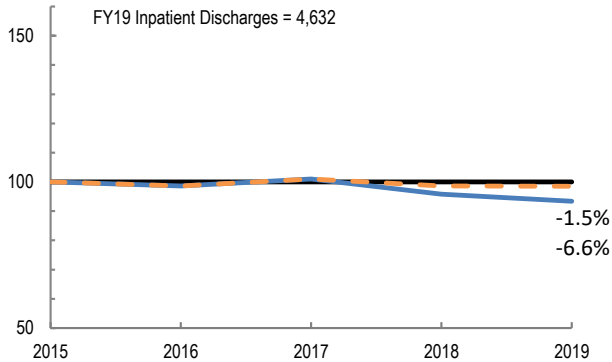
Cohort: Teaching Hospital

Key:

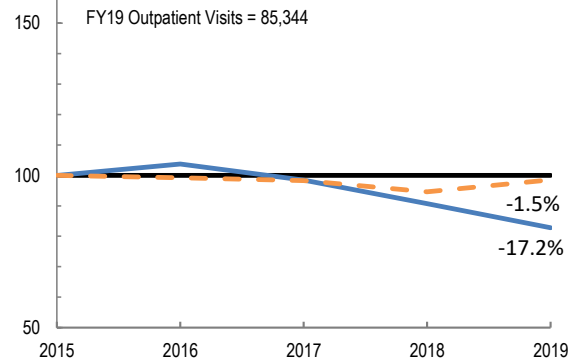
- Hospital
- Peer Cohort

## Utilization

How has the volume of the hospital's inpatient discharges changed compared to FY15, and how does this compare to the hospital's peer cohort median? (FY15=100)

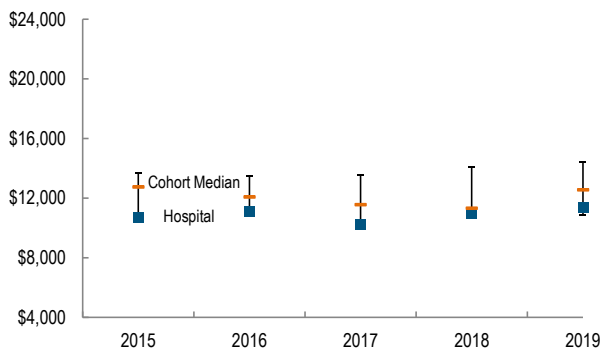


How has the volume of the hospital's outpatient visits changed compared to FY15, and how does this compare to the hospital's peer cohort median? (FY15=100)

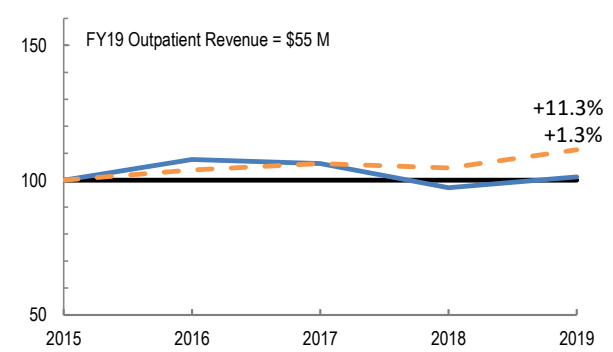


## Patient Revenue Trends

What was the hospital's net inpatient service revenue per case mix adjusted discharge between FY15 and FY19, and how does this compare to the hospital's peer cohort median?



How has the hospital's net outpatient revenue changed compared to FY15, and how does this compare to the hospital's peer cohort median? (FY15=100)



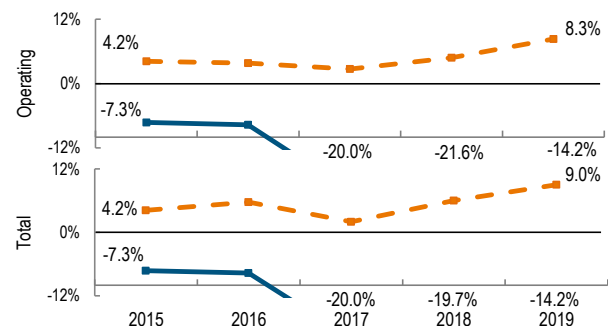
## Financial Performance

How have the hospital's total revenue and costs changed between FY15 and FY19<sup>#</sup>?

### Revenue, Cost, & Profit/Loss (in millions)

FY	2015	2016	2017	2018	2019
<b>Operating Revenue</b>	\$ 114.6	\$ 123.4	\$ 119.8	\$ 116.3	\$ 118.3
<b>Non-Operating Revenue</b>	\$ 0.0	\$ 0.0	\$ 0.0	\$ 2.3	\$ 0.0
<b>Total Revenue</b>	\$ 114.6	\$ 123.4	\$ 119.8	\$ 118.6	\$ 118.3
<b>Total Costs</b>	\$ 122.9	\$ 132.9	\$ 143.8	\$ 141.9	\$ 135.1
<b>Total Profit (Loss)</b>	\$ (8.3)	\$ (9.5)	\$ (24.0)	\$ (23.3)	\$ (16.8)

What were the hospital's total margin and operating margins between FY15 and FY19<sup>#</sup>, and how do these compare to the hospital's peer cohort medians?



For descriptions of the metrics, please see the technical appendix.

\* High Public Payer Hospitals (HPP) receive a minimum of 63% of gross patient service revenue from public payers.

† For more information on Community Hospital Reinvestment Trust Fund (CHRTF) special funding, please contact the Massachusetts Executive Office of Health and Human Services (EOHHS).

# The fiscal year 2019 financial performance data shown is sourced from standardized financial statement data submitted by Steward Health Care in September 2020. This data has not been verified by CHIA because audited financial statements and consolidating schedules were not provided by the hospital as required by regulation.