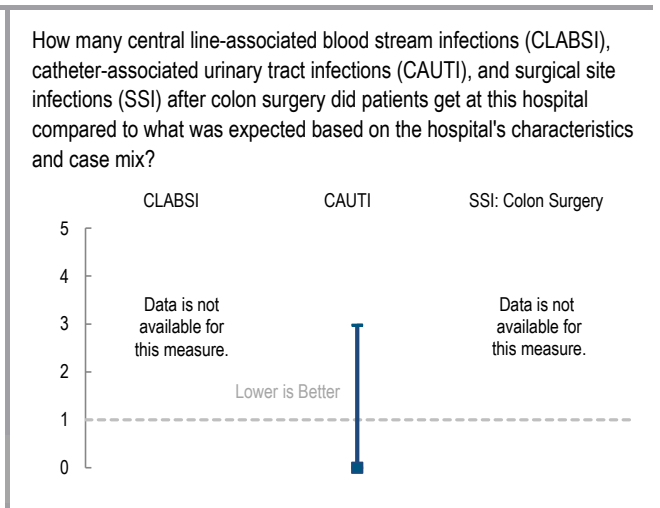
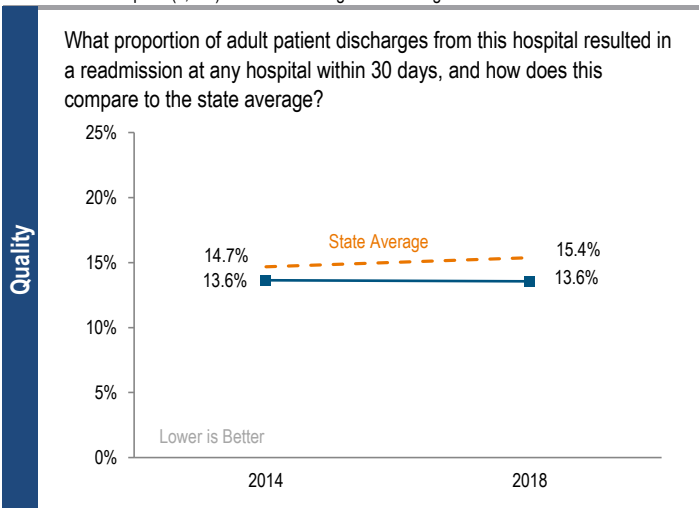
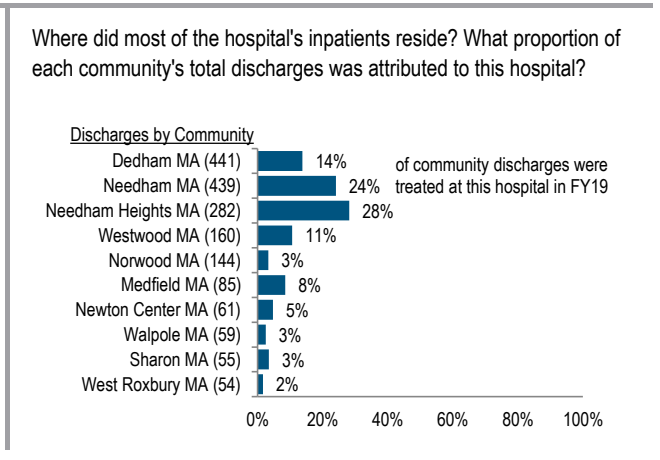
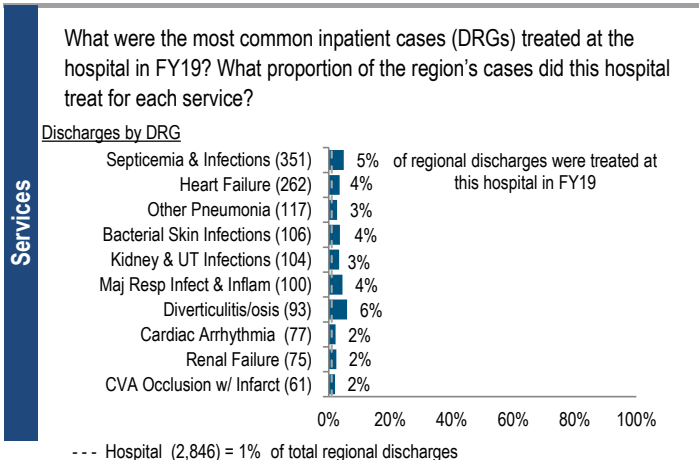


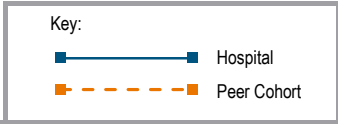
2019 Hospital Profile

Beth Israel Deaconess Hospital – Needham (BID-Needham) is a non-profit community hospital located in the Metro Boston region. At 45 inpatient beds, it is among the smaller acute hospitals in Massachusetts. It is a member of Beth Israel Lahey Health. Between FY15 and FY19, the volume of inpatient discharges at the hospital increased by 29.1% compared to a median increase of 7.9% at cohort hospitals. Outpatient visits increased 41.7% for the hospital between FY15 and FY19, compared to a median increase of 8.8% for its peer cohort. The hospital has reported a profit in four of the last five years. In FY19 it had a total margin of 1.7%, below the 5.6% median of its cohort hospitals.

Overview / Size		Payer Mix	
Hospital System Affiliation:	Beth Israel Lahey Health	Public Payer Mix:	51.5% (Non-HPP* Hospital)
Hospital System Surplus (Deficit) in FY19:	\$102,634,000	CY18 Commercial Statewide Relative Price:	0.92
Change in Ownership (FY15-19):	Beth Israel Lahey Health 3/1/19	Top 3 Commercial Payers:	Blue Cross Blue Shield Harvard Pilgrim Tufts HMO
Total Staffed Beds:	45, among the smaller acute hospitals		
% Occupancy:	64.6%, > cohort avg. (60%)		
Special Public Funding:	CHRTF°		
Trauma Center Designation:	Not Applicable		
Case Mix Index:	0.99, > cohort avg. (0.87); < statewide (1.16)		
Financial		Utilization	
Inpatient NPSR per CMAD:	\$11,208	Inpatient Discharges in FY19:	2,846
Change FY18-FY19:	24.0%	Change FY18-FY19:	0.5%
Inpatient:Outpatient Revenue in FY19:	18%:82%	Emergency Department Visits in FY19:	16,673
Outpatient Revenue in FY19:	\$68,497,170	Change FY18-FY19:	-1.2%
Change FY18-FY19:	1.1%	Outpatient Visits in FY19:	66,488
Total Revenue in FY19:	\$60,828,000	Change FY18-FY19:	3.0%
Total Surplus (Deficit) in FY19:	\$1,033,000		
		Quality	
		Readmission Rate in FY18:	13.6%
		Change FY14-FY18 (percentage points):	-0.1
		Early Elective Deliveries Rate:	Not Applicable

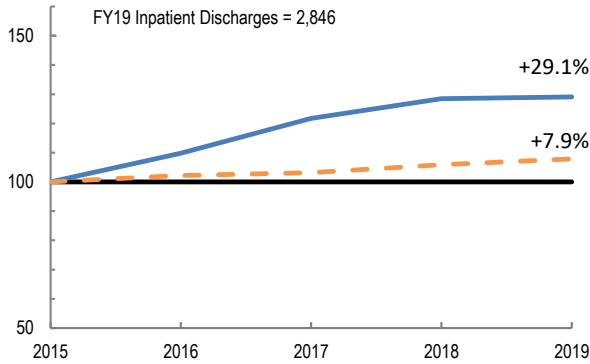


For descriptions of the metrics, please see the technical appendix.

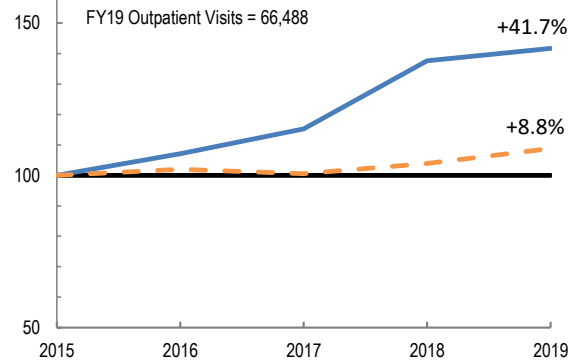


Utilization

How has the volume of the hospital's inpatient discharges changed compared to FY15, and how does this compare to the hospital's peer cohort median? (FY15=100)

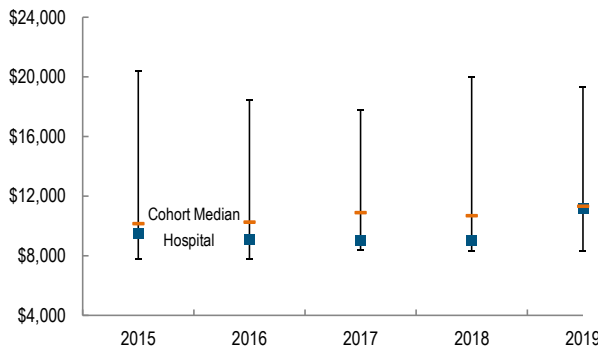


How has the volume of the hospital's outpatient visits changed compared to FY15, and how does this compare to the hospital's peer cohort median? (FY15=100)

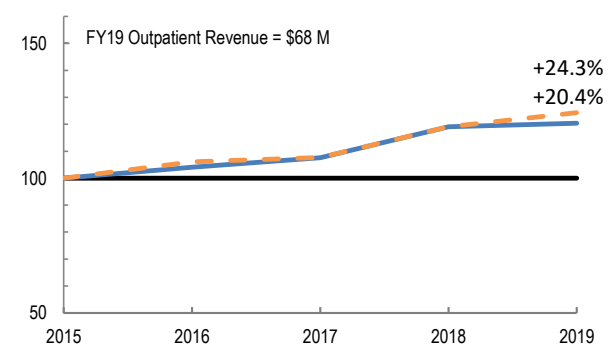


Patient Revenue Trends

What was the hospital's net inpatient service revenue per case mix adjusted discharge between FY15 and FY19, and how does this compare to the hospital's peer cohort median?



How has the hospital's net outpatient revenue changed compared to FY15, and how does this compare to the hospital's peer cohort median? (FY15=100)



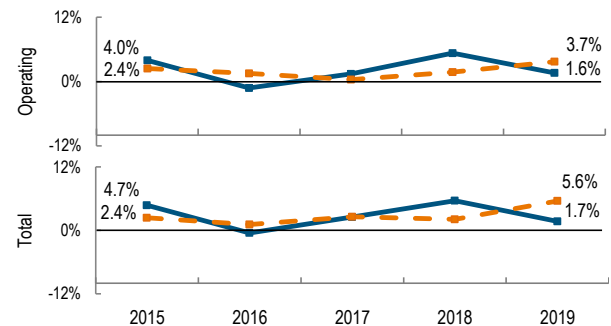
Financial Performance

How have the hospital's total revenue and costs changed between FY15 and FY19?

Revenue, Cost, & Profit/Loss (in millions)**

	FY	2015	2016	2017	2018	2019
Operating Revenue	\$	77.6	82.5	86.7	97.1	60.8
Non-Operating Revenue	\$	0.6	0.6	1.0	0.3	0.0
Total Revenue	\$	78.2	83.1	87.7	97.3	60.8
Total Costs	\$	74.5	83.5	85.5	91.9	59.8
Total Profit (Loss)	\$	3.7	(0.4)	2.2	5.4	1.0

What were the hospital's total margin and operating margins between FY15 and FY19, and how do these compare to the hospital's peer cohort medians?



For descriptions of the metrics, please see the technical appendix.

* High Public Payer Hospitals (HPP) receive a minimum of 63% of gross patient service revenue from public payers.

† For more information on Community Hospital Reinvestment Trust Fund (CHRTF) special funding, please contact the Massachusetts Executive Office of Health and Human Services (EOHHS).

** FY19 data reflects the seven months of data after the merger to Beth Israel Lahey Health.