

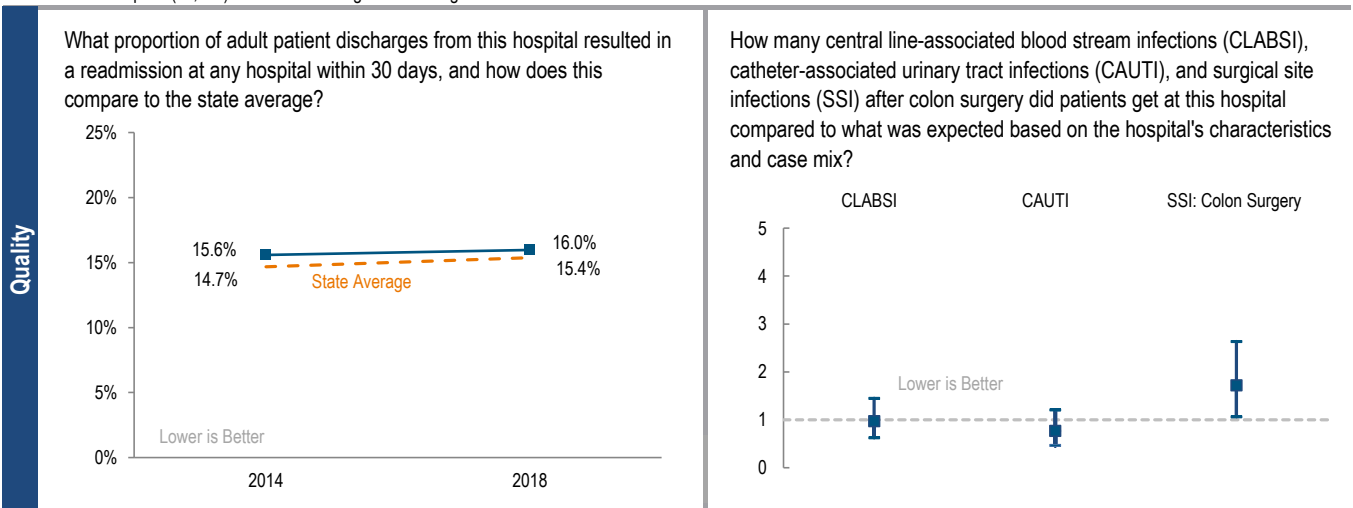
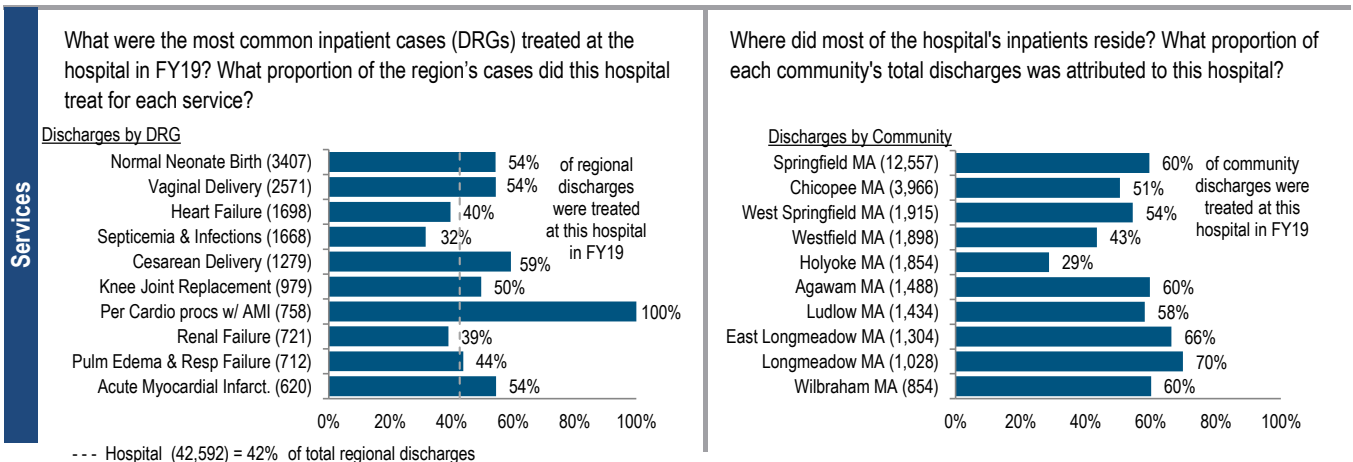
# BAYSTATE MEDICAL CENTER

## 2019 Hospital Profile

Springfield, MA  
Teaching Hospital  
Western Massachusetts

Baystate Medical Center is a non-profit teaching hospital located in the Western Massachusetts region. It is the third-largest acute hospital in Massachusetts, with 789 staffed beds. It is a member of Baystate Health and qualifies as High Public Payer (HPP). It is the only Level 1 Trauma Center in its region, the only Level 2 Pediatric Trauma Center in its region, and one of nine organ transplant centers in Massachusetts. Between FY15 and FY19, the volume of inpatient discharges increased by 4.0% compared to a 1.5% decrease at cohort hospitals. Baystate Medical Center was profitable each year from FY15 to FY19. In FY19 it had a total margin of 9.0%, matching the median of its cohort hospitals.

At a Glance	<b>Overview / Size</b>	
	Hospital System Affiliation:	Baystate Health
	Hospital System Surplus (Deficit) in FY19:	\$71,003,000
	Change in Ownership (FY15-19):	Not Applicable
	Total Staffed Beds:	789, 3rd largest acute hospital
	% Occupancy:	76.0%, < cohort avg. (79%)
	Special Public Funding:	HCI <sup>II</sup> , CHRTF <sup>o</sup>
	Trauma Center Designation:	Adult: Level 1, Pedi: Level 2
	Case Mix Index:	1.29, > cohort avg. (1.15); > statewide (1.16)
	<b>Financial</b>	
	Inpatient NPSR per CMAD:	\$11,727
	Change FY18-FY19:	6.6%
	Inpatient:Outpatient Revenue in FY19:	44%:56%
	Outpatient Revenue in FY19:	\$588,838,661
	Change FY18-FY19:	4.6%
	Total Revenue in FY19:	\$1,408,942,000
	Total Surplus (Deficit) in FY19:	\$126,376,000
	<b>Payer Mix</b>	
	Public Payer Mix:	70.8% (HPP* Hospital)
	CY18 Commercial Statewide Relative Price:	1.01
	Top 3 Commercial Payers:	Blue Cross Blue Shield Health New England Cigna East
	<b>Utilization</b>	
	Inpatient Discharges in FY19:	42,592
	Change FY18-FY19:	0.4%
	Emergency Department Visits in FY19:	166,277
	Change FY18-FY19:	4.4%
	Outpatient Visits in FY19:	437,771
	Change FY18-FY19:	0.8%
	<b>Quality</b>	
	Readmission Rate in FY18:	16.0%
	Change FY14-FY18 (percentage points):	0.4
	Early Elective Deliveries Rate:	1.4%



For descriptions of the metrics, please see the technical appendix.

# 2019 HOSPITAL PROFILE: BAYSTATE MEDICAL CENTER

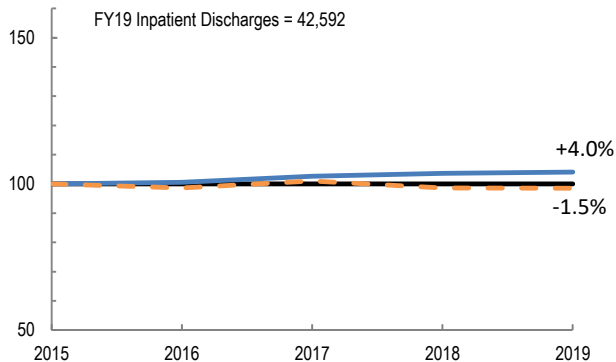
Cohort: Teaching Hospital

Key:

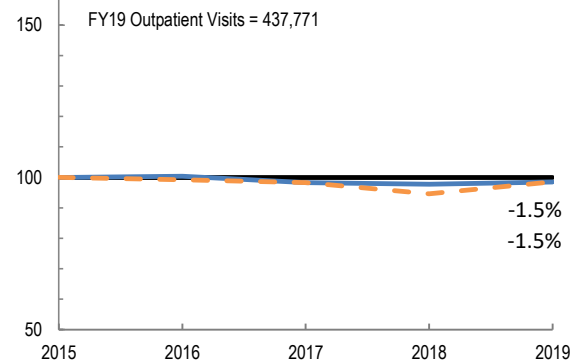
— Hospital  
- - - Peer Cohort

## Utilization

How has the volume of the hospital's inpatient discharges changed compared to FY15, and how does this compare to the hospital's peer cohort median? (FY15=100)

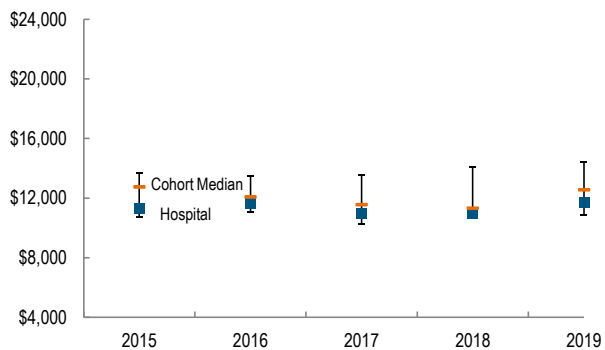


How has the volume of the hospital's outpatient visits changed compared to FY15, and how does this compare to the hospital's peer cohort median? (FY15=100)

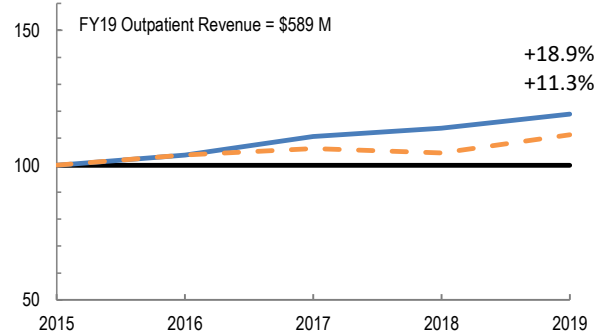


## Patient Revenue Trends

What was the hospital's net inpatient service revenue per case mix adjusted discharge between FY15 and FY19, and how does this compare to the hospital's peer cohort median?



How has the hospital's net outpatient revenue changed compared to FY15, and how does this compare to the hospital's peer cohort median? (FY15=100)



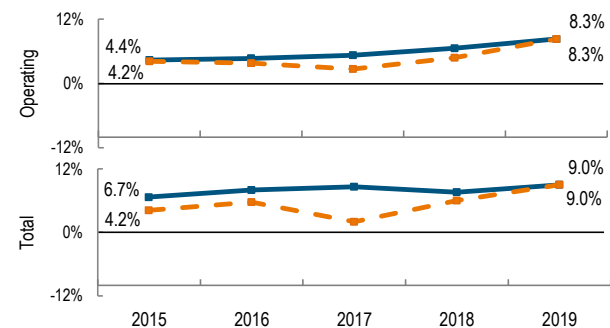
## Financial Performance

How have the hospital's total revenue and costs changed between FY15 and FY19?

### Revenue, Cost, & Profit/Loss (in millions)

FY	2015	2016	2017	2018	2019
<b>Operating Revenue</b>	\$ 1,127	\$ 1,178	\$ 1,227	\$ 1,296	\$ 1,400
<b>Non-Operating Revenue</b>	\$ 26.1	\$ 40.3	\$ 42.3	\$ 13.3	\$ 8.9
<b>Total Revenue</b>	\$ 1,153	\$ 1,218	\$ 1,269	\$ 1,309	\$ 1,409
<b>Total Costs</b>	\$ 1,076	\$ 1,121	\$ 1,160	\$ 1,210	\$ 1,283
<b>Total Profit (Loss)</b>	\$ 76.8	\$ 97.8	\$ 109.0	\$ 99.8	\$ 126.4

What were the hospital's total margin and operating margins between FY15 and FY19, and how do these compare to the hospital's peer cohort medians?



For descriptions of the metrics, please see the technical appendix.

\* High Public Payer Hospitals (HPP) receive a minimum of 63% of gross patient service revenue from public payers.

† For more information on Community Hospital Reinvestment Trust Fund (CHRTF) special funding, please contact the Massachusetts Executive Office of Health and Human Services (EOHHS).

‡ For more information on Health Care Innovation Investment Program (HCII) special funding, please contact the Health Policy Commission (HPC).