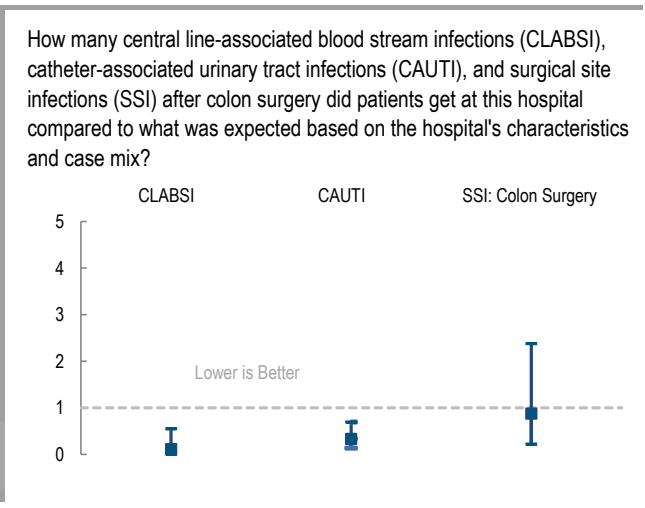
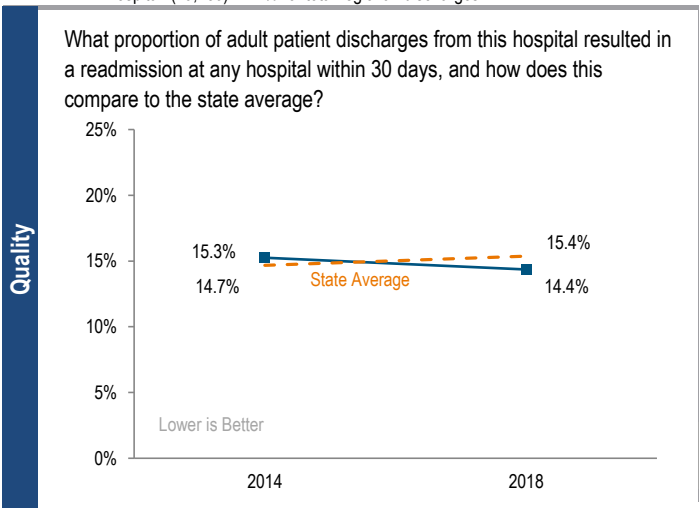
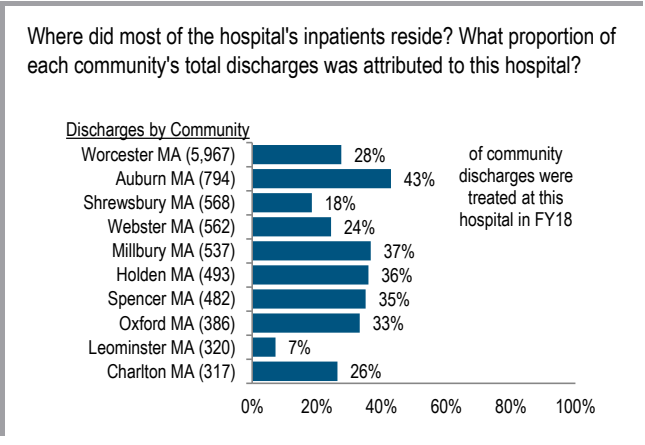
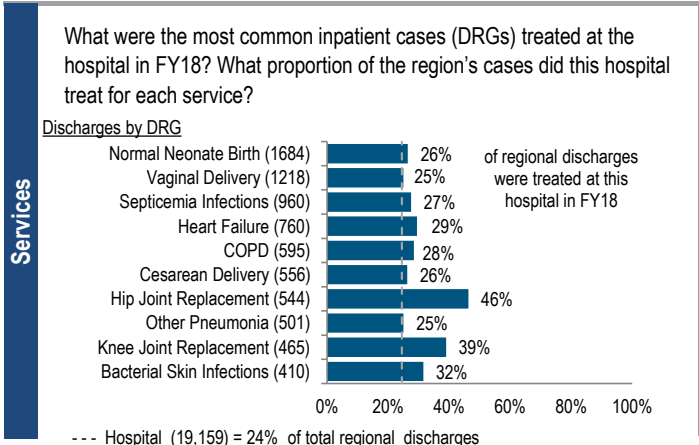


Saint Vincent Hospital is a for-profit teaching hospital located in the Central Massachusetts region. Along with MetroWest Medical Center, Saint Vincent Hospital was bought by Tenet Healthcare Corporation in 2013. Between FY14 and FY18, the volume of inpatient discharges at the hospital decreased by 0.9% compared to a median increase of 3.8% at cohort hospitals. Outpatient visits increased 72.6% for the hospital between FY14 and FY18, compared to a median decrease of 2.0% for its peer cohort. Saint Vincent Hospital reported a profit each year in this time period including a profit of \$72.2M in FY18 and a total margin of 14.6%, compared to the cohort median of 6.0%.

Overview / Size	
Hospital System Affiliation:	Tenet Healthcare
Hospital System Surplus (Loss) in FY18:	\$111,000,000
Change in Ownership (FY14-18):	Not Applicable
Total Staffed Beds:	303, among the larger acute hospitals
% Occupancy:	69.4%, < cohort avg. (79%)
Special Public Funding:	ICB*
Trauma Center Designation:	Not Applicable
Case Mix Index:	1.03, < cohort avg. (1.12); < statewide (1.14)
Financial	
Inpatient NPSR per CMAD:	\$11,081
Change FY17-FY18:	-4.2%
Inpatient:Outpatient Revenue in FY18:	39%:61%
Outpatient Revenue in FY18:	\$229,729,021
Change FY17-FY18:	10.0%
Total Revenue in FY18:	\$495,763,298
Total Surplus (Loss) in FY18:	\$72,180,428
Payer Mix	
Public Payer Mix:	67.5% HPP Hospital
CY17 Commercial Statewide Relative Price:	0.95
Top 3 Commercial Payers:	Blue Cross Blue Shield of Massachusetts Fallon Community Health Plan Harvard Pilgrim Health Care
Utilization	
Inpatient Discharges in FY18:	19,159
Change FY17-FY18:	-1.8%
Emergency Department Visits in FY18:	52,764
Change FY17-FY18:	-0.6%
Outpatient Visits in FY18:	213,394
Change FY17-FY18:	-3.8%
Quality	
Readmission Rate in FY18:	14.4%
Change FY14-FY18 (percentage points):	-0.9
Early Elective Deliveries Rate:	1.2%



For descriptions of the metrics, please see the technical appendix.

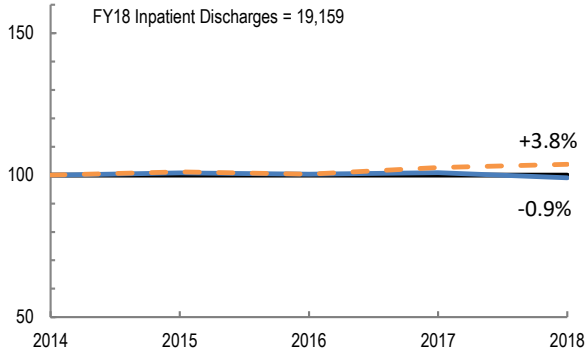
2018 HOSPITAL PROFILE: SAINT VINCENT HOSPITAL

Cohort: Teaching Hospital

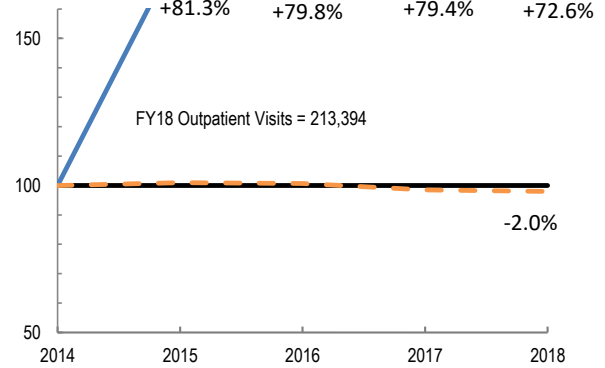


Utilization

How has the volume of the hospital's inpatient discharges changed compared to FY14, and how does this compare to the hospital's peer cohort median? (FY14=100)

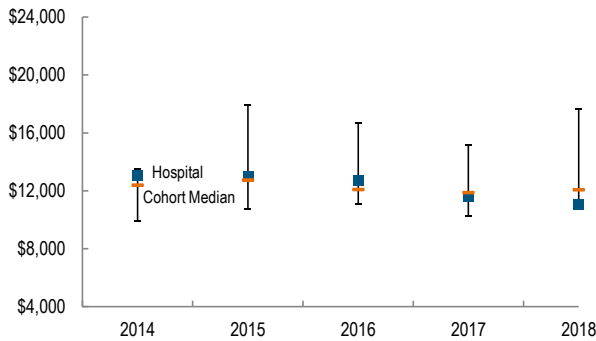


How has the volume of the hospital's outpatient visits changed compared to FY14, and how does this compare to the hospital's peer cohort median? (FY14=100)

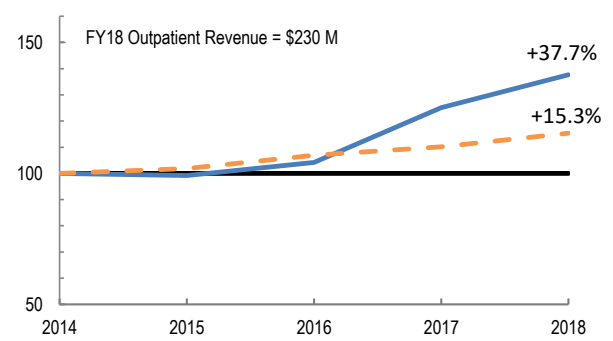


Patient Revenue Trends

What was the hospital's net inpatient service revenue per case mix adjusted discharge between FY14 and FY18, and how does this compare to the hospital's peer cohort median?



How has the hospital's total outpatient revenue changed compared to FY14, and how does this compare to the hospital's peer cohort median? (FY14=100)



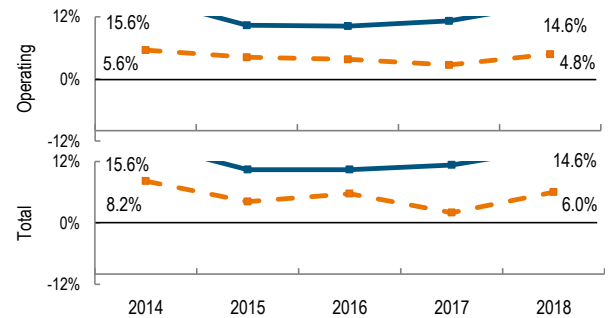
Financial Performance

How have the hospital's total revenue and costs changed between FY14 and FY18?

Revenue, Cost, & Profit/Loss (in millions)

FY	2014	2015	2016	2017	2018
Operating Revenue	\$ 418.2	\$ 431.3	\$ 458.1	\$ 460.9	\$ 496.1
Non-Operating Revenue	\$ 0.0	\$ 0.1	\$ 0.8	\$ 0.1	\$ (0.4)
Total Revenue	\$ 418.2	\$ 431.4	\$ 458.9	\$ 461.0	\$ 495.8
Total Costs	\$ 353.0	\$ 386.5	\$ 411.3	\$ 409.1	\$ 423.6
Total Profit (Loss)	\$ 65.2	\$ 44.9	\$ 47.6	\$ 51.9	\$ 72.2

What were the hospital's total margin and operating margins between FY14 and FY18, and how do these compare to the hospital's peer cohort medians?



For descriptions of the metrics, please see the technical appendix.

* High Public Payer Hospitals (HPP) receive a minimum of 63% of gross patient service revenue from public payers.

° For more information on Infrastructure and Capacity Building (ICB) special funding, please contact the Massachusetts Executive Office of Health and Human Services (EOHHS).