

Steward Saint Elizabeth's Medical Center is a mid-size, for-profit teaching hospital located in the Metro Boston region. Steward Saint Elizabeth's is a member of Steward Health Care. It also qualifies as a High Public Payer (HPP) hospital. Outpatient visits decreased 19.6% for the hospital between FY14 and FY18, compared to a median decrease of 2.0% for its peer cohort. Steward Saint Elizabeth's Medical Center reported a profit each year in this time period including a profit of \$19.2M in FY18 and a total margin of 5.0% compared to its peer cohort median of 6.0%.

Overview / Size	
Hospital System Affiliation:	Steward Health Care
Hospital System Surplus (Loss) in FY18:	(\$271,104,000)
Change in Ownership (FY14-18):	Not Applicable
Total Staffed Beds:	225, mid-size acute hospital
% Occupancy:	91.0%, > cohort avg. (79%)
Special Public Funding:	ICB*
Trauma Center Designation:	Not Applicable
Case Mix Index:	1.32, > cohort avg. (1.12); > statewide (1.14)

Financial	
Inpatient NPSR per CMAD:	\$14,080
Change FY17-FY18:	4.1%
Inpatient:Outpatient Revenue in FY18:	58%:42%
Outpatient Revenue in FY18:	\$117,225,507
Change FY17-FY18:	3.8%
Total Revenue in FY18:	\$381,958,277
Total Surplus (Loss) in FY18:	\$19,195,143

Payer Mix	
Public Payer Mix:	68.1% HPP Hospital
CY17 Commercial Statewide Relative Price:	1.09
Top 3 Commercial Payers:	Blue Cross Blue Shield of Massachusetts Tufts Associated HMO, Inc. Harvard Pilgrim Health Care

Utilization	
Inpatient Discharges in FY18:	13,466
Change FY17-FY18:	0.9%
Emergency Department Visits in FY18:	27,890
Change FY17-FY18:	-3.4%
Outpatient Visits in FY18:	123,786
Change FY17-FY18:	-5.9%

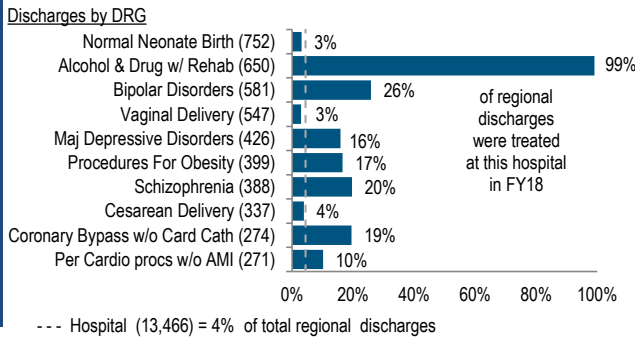
Quality	
Readmission Rate in FY18:	15.9%
Change FY14-FY18 (percentage points):	-0.3
Early Elective Deliveries Rate:	3.2%

At a Glance

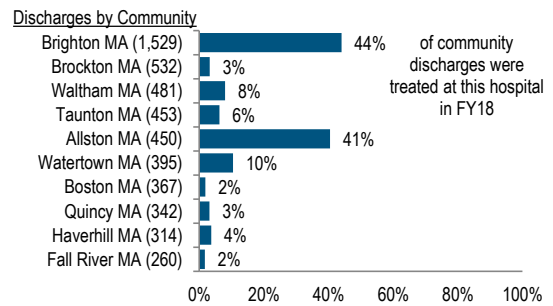
Services

Quality

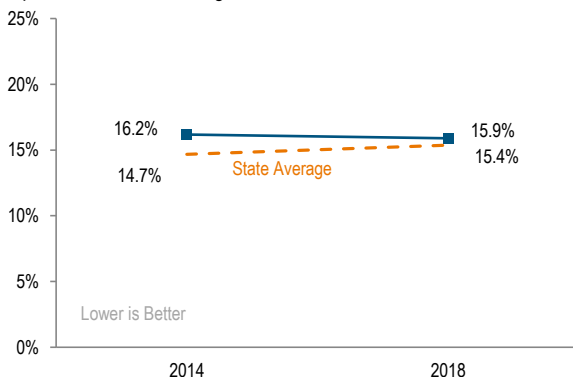
What were the most common inpatient cases (DRGs) treated at the hospital in FY18? What proportion of the region's cases did this hospital treat for each service?



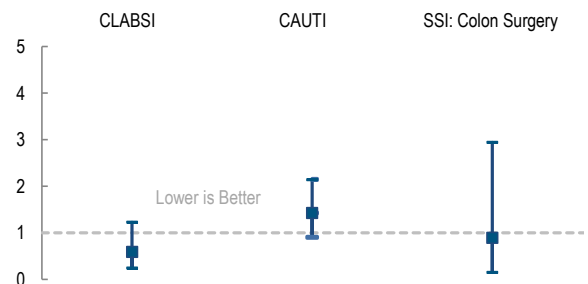
Where did most of the hospital's inpatients reside? What proportion of each community's total discharges was attributed to this hospital?



What proportion of adult patient discharges from this hospital resulted in a readmission at any hospital within 30 days, and how does this compare to the state average?



How many central line-associated blood stream infections (CLABSI), catheter-associated urinary tract infections (CAUTI), and surgical site infections (SSI) after colon surgery did patients get at this hospital compared to what was expected based on the hospital's characteristics and case mix?



For descriptions of the metrics, please see the technical appendix.

# 2018 HOSPITAL PROFILE: STEWARD ST. ELIZABETH'S MEDICAL CENTER

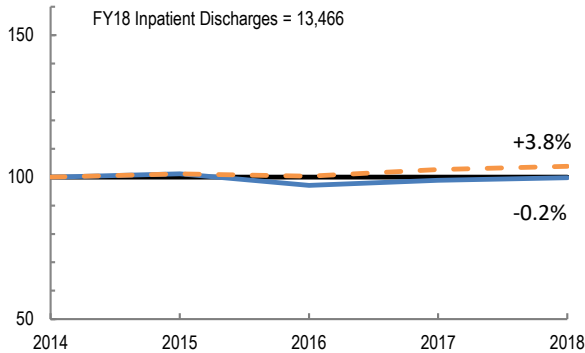
Cohort: Teaching Hospital

Key:

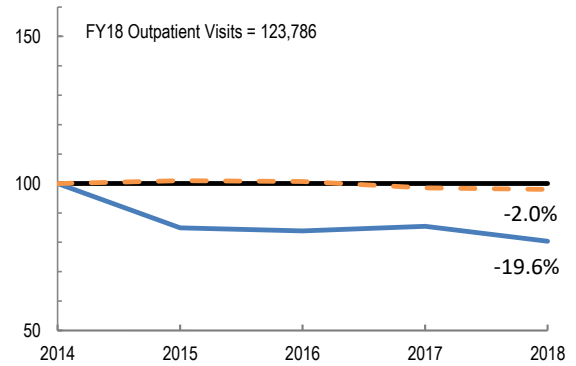
- Hospital
- Peer Cohort

Utilization

How has the volume of the hospital's inpatient discharges changed compared to FY14, and how does this compare to the hospital's peer cohort median? (FY14=100)

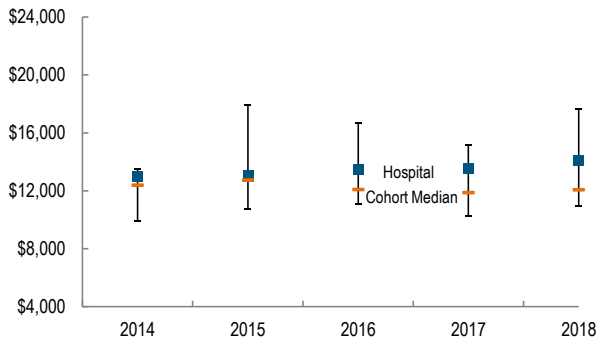


How has the volume of the hospital's outpatient visits changed compared to FY14, and how does this compare to the hospital's peer cohort median? (FY14=100)

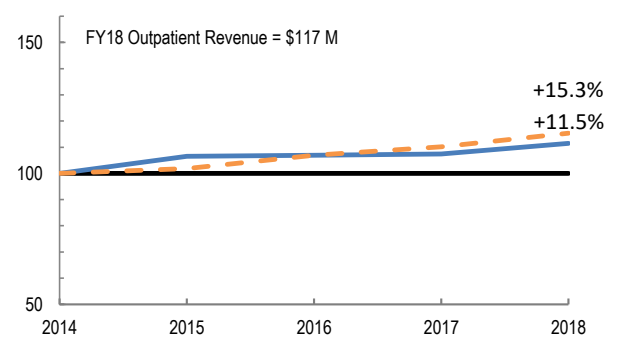


Patient Revenue Trends

What was the hospital's net inpatient service revenue per case mix adjusted discharge between FY14 and FY18, and how does this compare to the hospital's peer cohort median?



How has the hospital's total outpatient revenue changed compared to FY14, and how does this compare to the hospital's peer cohort median? (FY14=100)



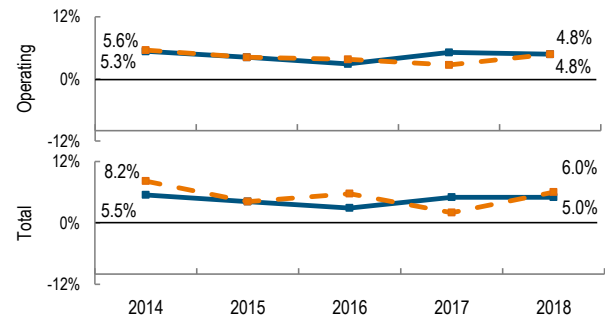
Financial Performance

How have the hospital's total revenue and costs changed between FY14 and FY18?

Revenue, Cost, & Profit/Loss (in millions)

FY	2014	2015	2016	2017	2018
<b>Operating Revenue</b>	\$ 312.0	\$ 326.3	\$ 334.3	\$ 360.2	\$ 381.0
<b>Non-Operating Revenue</b>	\$ 0.4	\$ 0.1	\$ 0.0	\$ (0.4)	\$ 1.0
<b>Total Revenue</b>	\$ 312.3	\$ 326.4	\$ 334.3	\$ 359.8	\$ 382.0
<b>Total Costs</b>	\$ 295.3	\$ 312.7	\$ 324.7	\$ 341.8	\$ 362.8
<b>Total Profit (Loss)</b>	\$ 17.1	\$ 13.6	\$ 9.7	\$ 18.0	\$ 19.2

What were the hospital's total margin and operating margins between FY14 and FY18, and how do these compare to the hospital's peer cohort medians?



For descriptions of the metrics, please see the technical appendix.

\* High Public Payer Hospitals (HPP) receive a minimum of 63% of gross patient service revenue from public payers.

° For more information on Infrastructure and Capacity Building (ICB) special funding, please contact the Massachusetts Executive Office of Health and Human Services (EOHHS).