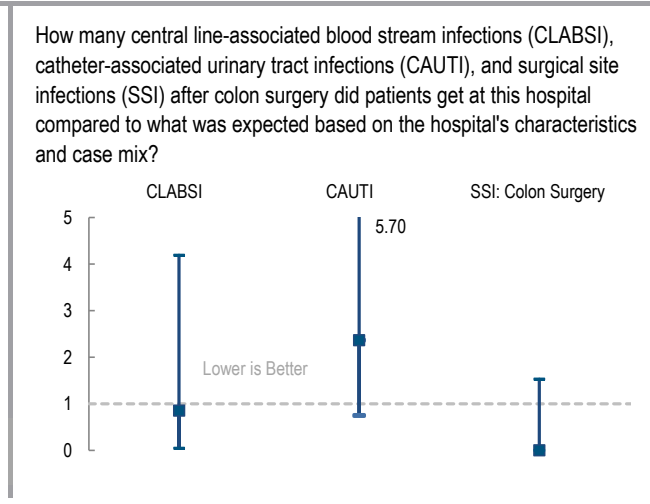
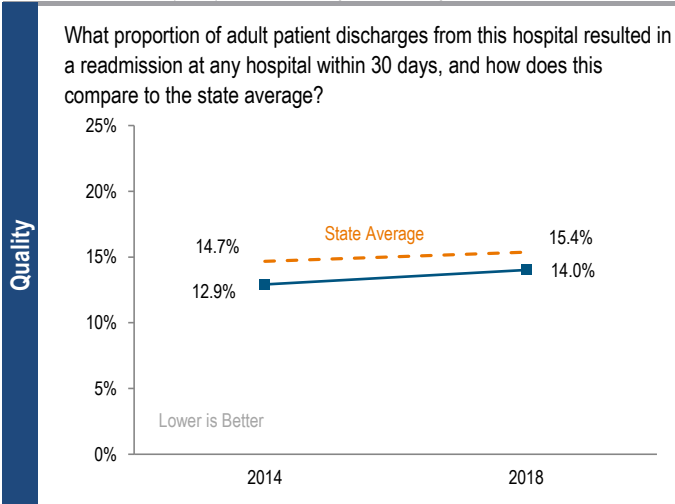
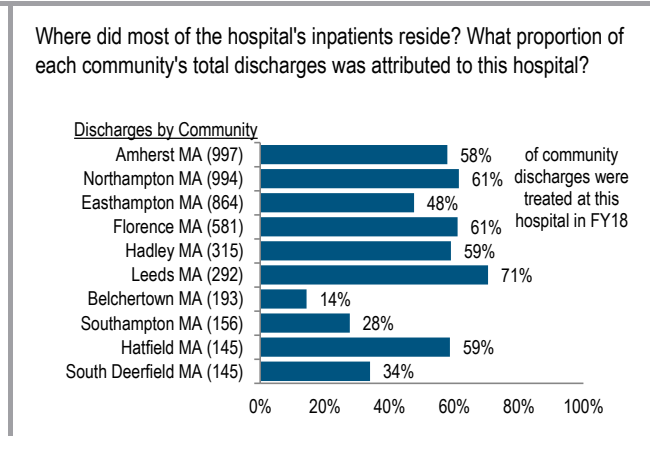
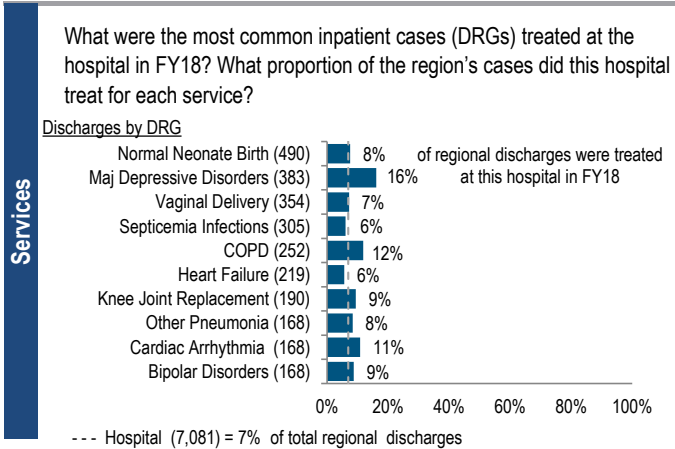


Cooley Dickinson Hospital is a community hospital located in the Western Massachusetts region. It is among the smaller acute hospitals in Massachusetts and a member of Partners HealthCare. Between FY14 and FY18, inpatient discharges at the hospital have increased by 1.0%, compared with a median increase of 10.7% among cohort hospitals. In the same period, outpatient visits increased by 3.8%, compared to a 5.8% median increase in its cohort. After reporting a profit in each of the three prior years, Cooley Dickinson Hospital reported a loss of \$0.6M in FY18 and a total margin of -0.3%, compared to a median total margin of 2.1% in its cohort.

Overview / Size		Payer Mix	
Hospital System Affiliation:	Partners HealthCare System	Public Payer Mix:	62.3% Non-HPP Hospital
Hospital System Surplus (Loss) in FY18:	\$826,605,000	CY17 Commercial Statewide Relative Price:	1.07
Change in Ownership (FY14-18):	Not Applicable	Top 3 Commercial Payers:	Blue Cross Blue Shield of Massachusetts Health New England, Inc. UniCare Life and Health Insurance Co.
Total Staffed Beds:	93, among the smaller acute hospitals	Utilization	
% Occupancy:	92.8%, highest in cohort avg. (63%)	Inpatient Discharges in FY18:	7,081
Special Public Funding:	ICB*	Change FY17-FY18:	0.9%
Trauma Center Designation:	Not Applicable	Emergency Department Visits in FY18:	33,418
Case Mix Index:	0.89, > cohort avg. (0.87); < statewide (1.14)	Change FY17-FY18:	0.9%
Financial		Outpatient Visits in FY18:	53,496
Inpatient NPSR per CMAD:	\$10,570	Change FY17-FY18:	-1.3%
Change FY17-FY18:	11.9%	Quality	
Inpatient:Outpatient Revenue in FY18:	32%:68%	Readmission Rate in FY18:	14.0%
Outpatient Revenue in FY18:	\$114,399,469	Change FY14-FY18 (percentage points):	1.1
Change FY17-FY18:	-4.7%	Early Elective Deliveries Rate:	0.0%
Total Revenue in FY18:	\$187,249,000		
Total Surplus (Loss) in FY18:	(\$643,000)		



For descriptions of the metrics, please see the technical appendix.

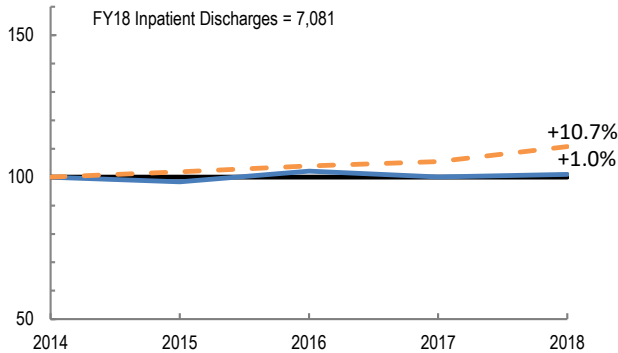
2018 HOSPITAL PROFILE: COOLEY DICKINSON HOSPITAL

Cohort: Community Hospital

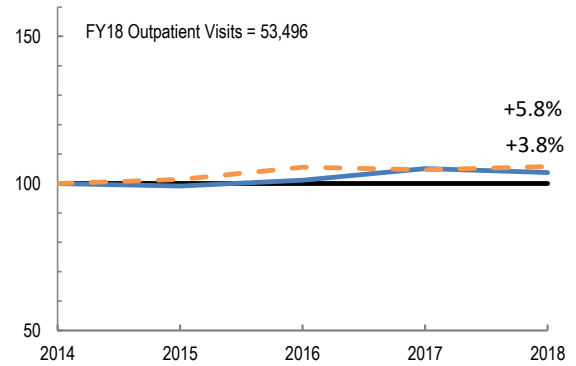


Utilization

How has the volume of the hospital's inpatient discharges changed compared to FY14, and how does this compare to the hospital's peer cohort median? (FY14=100)

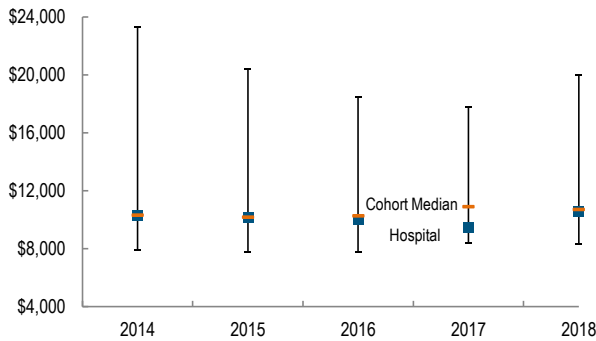


How has the volume of the hospital's outpatient visits changed compared to FY14, and how does this compare to the hospital's peer cohort median? (FY14=100)

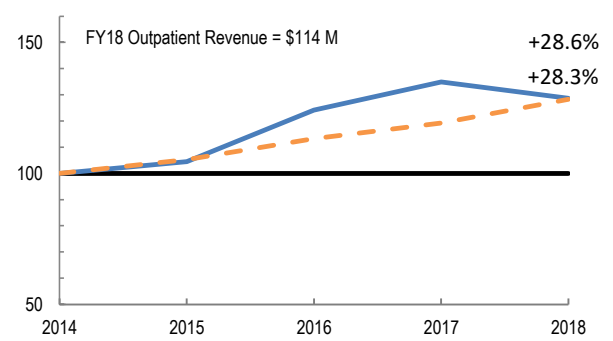


Patient Revenue Trends

What was the hospital's net inpatient service revenue per case mix adjusted discharge between FY14 and FY18, and how does this compare to the hospital's peer cohort median?



How has the hospital's total outpatient revenue changed compared to FY14, and how does this compare to the hospital's peer cohort median? (FY14=100)



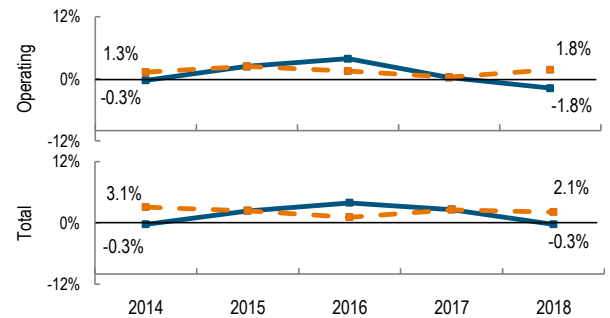
Financial Performance

How have the hospital's total revenue and costs changed between FY14 and FY18?

Revenue, Cost, & Profit/Loss (in millions)

FY	2014	2015	2016	2017	2018
Operating Revenue	\$ 153.4	\$ 157.5	\$ 178.1	\$ 183.0	\$ 184.5
Non-Operating Revenue	\$ 0.0	\$ (0.1)	\$ 0.1	\$ 4.2	\$ 2.8
Total Revenue	\$ 153.4	\$ 157.4	\$ 178.1	\$ 187.3	\$ 187.2
Total Costs	\$ 153.8	\$ 153.7	\$ 171.2	\$ 182.4	\$ 187.9
Total Profit (Loss)	\$ (0.4)	\$ 3.7	\$ 7.0	\$ 4.9	\$ (0.6)

What were the hospital's total margin and operating margins between FY14 and FY18, and how do these compare to the hospital's peer cohort medians?



For descriptions of the metrics, please see the technical appendix.

* High Public Payer Hospitals (HPP) receive a minimum of 63% of gross patient service revenue from public payers.

° For more information on Infrastructure and Capacity Building (ICB) special funding, please contact the Massachusetts Executive Office of Health and Human Services (EOHHS).