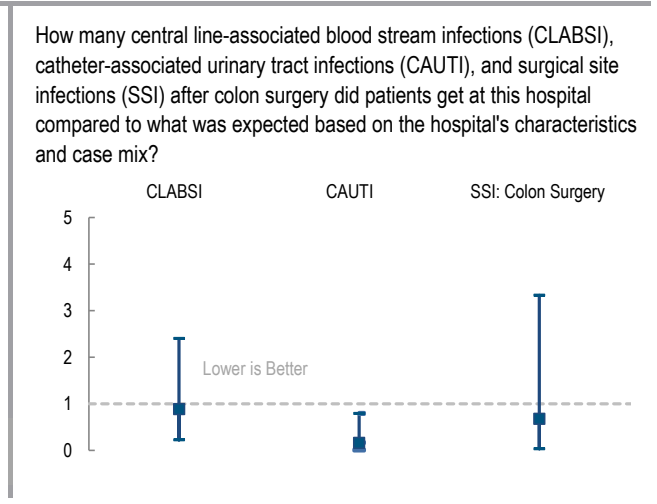
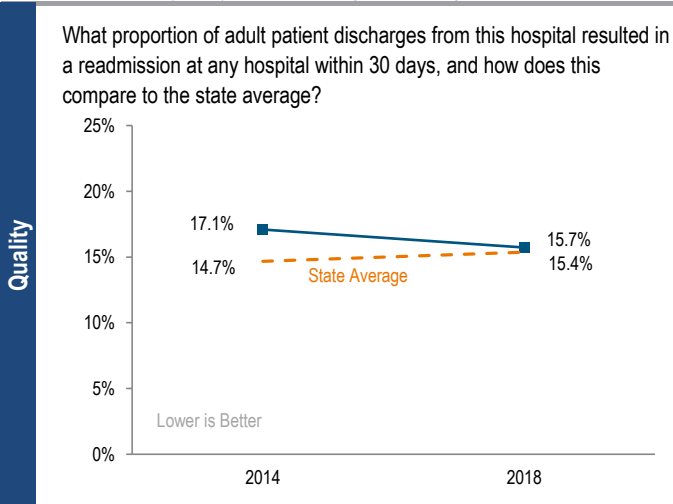
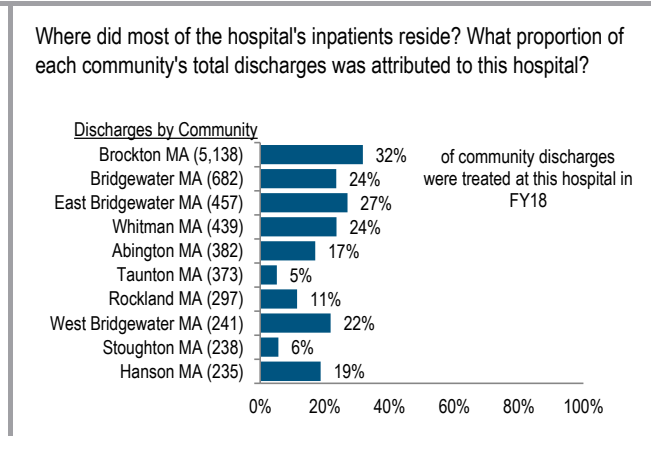
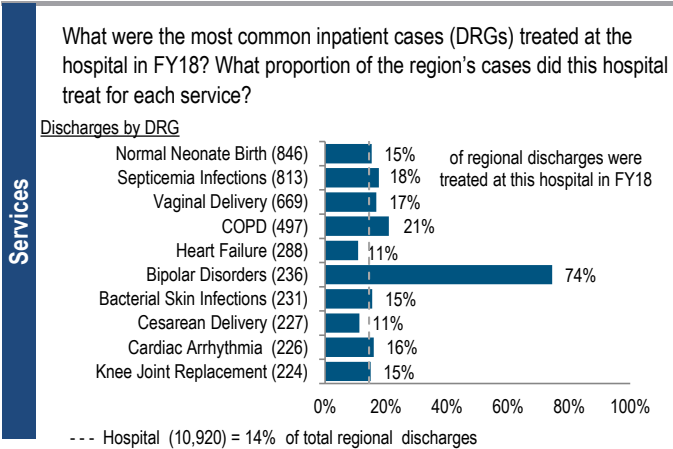


2018 Hospital Profile

Signature Healthcare Brockton Hospital is a non-profit community-High Public Payer (HPP) hospital located in the Metro South region. Between FY14 and FY18, the volume of inpatient discharges at the hospital decreased by 12.4% compared to a median increase of 3.1% at cohort hospitals. Outpatient visits increased 65.2% for the hospital between FY14 and FY18, compared to a median increase of 5.0% for its peer cohort. Signature Healthcare Brockton Hospital reported a profit each year in this time period including a profit of \$19.9M in FY18 and a total margin of 6.7%, compared to the cohort median of 5.0%.

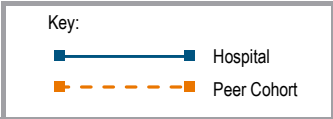
Overview / Size		Payer Mix	
Hospital System Affiliation:	Signature Healthcare Corporation	Public Payer Mix:	73.7% HPP Hospital
Hospital System Surplus (Loss) in FY18:	\$11,483,617	CY17 Commercial Statewide Relative Price:	0.80
Change in Ownership (FY14-18):	Not Applicable	Top 3 Commercial Payers:	Blue Cross Blue Shield of Massachusetts Harvard Pilgrim Health Care Tufts Associated HMO, Inc.
Total Staffed Beds:	216, mid-size acute hospital		
% Occupancy:	59.9%, < cohort avg. (67%)		
Special Public Funding:	ICB*		
Trauma Center Designation:	Not Applicable		
Case Mix Index:	0.93, = cohort avg. (0.93); < statewide (1.14)		
Financial		Utilization	
Inpatient NPSR per CMAD:	\$12,334	Inpatient Discharges in FY18:	10,920
Change FY17-FY18:	4.2%	Change FY17-FY18:	-6.4%
Inpatient:Outpatient Revenue in FY18:	35%:65%	Emergency Department Visits in FY18:	60,238
Outpatient Revenue in FY18:	\$131,293,262	Change FY17-FY18:	-0.1%
Change FY17-FY18:	5.2%	Outpatient Visits in FY18:	174,540
Total Revenue in FY18:	\$297,137,271	Change FY17-FY18:	10.3%
Total Surplus (Loss) in FY18:	\$19,945,526		
		Quality	
		Readmission Rate in FY18:	15.7%
		Change FY14-FY18 (percentage points):	-1.4
		Early Elective Deliveries Rate:	0.0%



For descriptions of the metrics, please see the technical appendix.

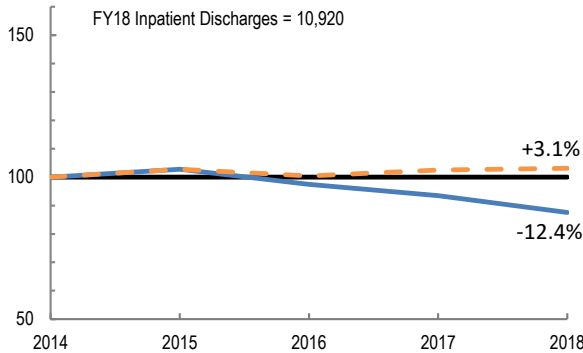
2018 HOSPITAL PROFILE: SIGNATURE HEALTHCARE BROCKTON HOSPITAL

Cohort: Community-High Public Payer Hospital

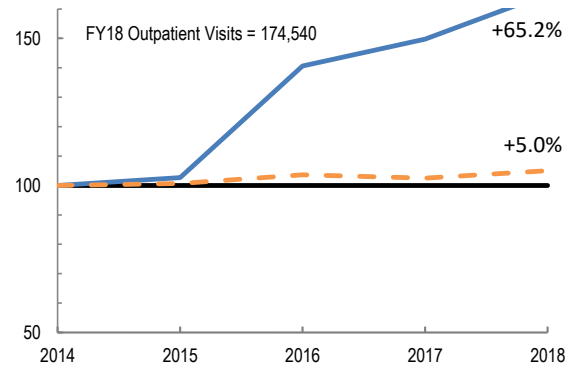


Utilization

How has the volume of the hospital's inpatient discharges changed compared to FY14, and how does this compare to the hospital's peer cohort median? (FY14=100)

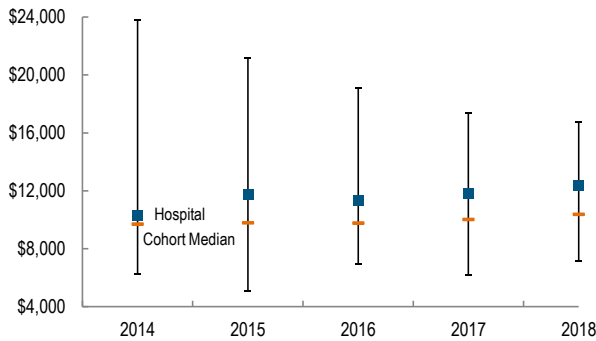


How has the volume of the hospital's outpatient visits changed compared to FY14, and how does this compare to the hospital's peer cohort median? (FY14=100)

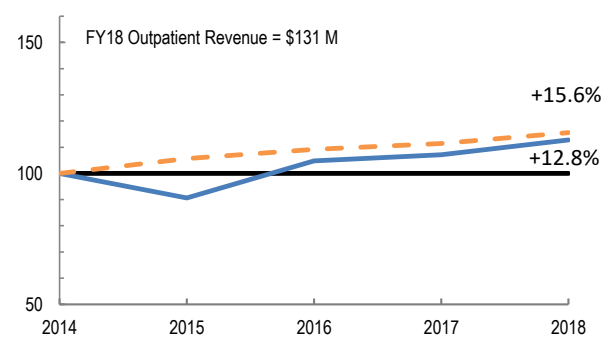


Patient Revenue Trends

What was the hospital's net inpatient service revenue per case mix adjusted discharge between FY14 and FY18, and how does this compare to the hospital's peer cohort median?



How has the hospital's total outpatient revenue changed compared to FY14, and how does this compare to the hospital's peer cohort median? (FY14=100)



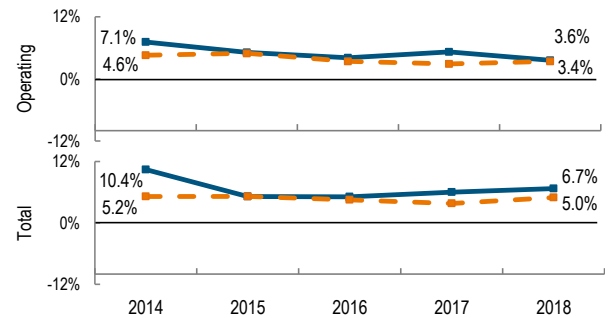
Financial Performance

How have the hospital's total revenue and costs changed between FY14 and FY18?

Revenue, Cost, & Profit/Loss (in millions)

FY	2014	2015	2016	2017	2018
Operating Revenue	\$ 237.7	\$ 260.0	\$ 268.0	\$ 282.9	\$ 287.9
Non-Operating Revenue	\$ 8.1	\$ 0.2	\$ 2.7	\$ 2.3	\$ 9.3
Total Revenue	\$ 245.9	\$ 260.2	\$ 270.6	\$ 285.1	\$ 297.1
Total Costs	\$ 220.2	\$ 246.7	\$ 256.9	\$ 268.1	\$ 277.2
Total Profit (Loss)	\$ 25.7	\$ 13.5	\$ 13.8	\$ 17.0	\$ 19.9

What were the hospital's total margin and operating margins between FY14 and FY18, and how do these compare to the hospital's peer cohort medians?



For descriptions of the metrics, please see the technical appendix.

* High Public Payer Hospitals (HPP) receive a minimum of 63% of gross patient service revenue from public payers.

° For more information on Infrastructure and Capacity Building (ICB) special funding, please contact the Massachusetts Executive Office of Health and Human Services (EOHHS).