

Tufts Medical Center is a large, non-profit academic medical center (AMC) located in the Metro Boston region. Tufts Medical Center provides medical teaching programs to Tufts University School of Medicine and includes the Floating Hospital for Children, which is located within the Tufts Medical Center complex. Tufts Medical Center is one of nine organ transplant centers in Massachusetts and is a member of Wellforce. Outpatient revenue increased by 53.6% between FY13 and FY17, compared with the cohort median increase of 28.3%. Tufts Medical Center reported a loss in FY15 but reported profits in all other years.

Overview / Size

Hospital System Affiliation:	Wellforce
Change in Ownership (FY13-17):	Wellforce - 2014
Total Staffed Beds:	280, among the larger acute hospitals
% Occupancy:	97.4%, highest in cohort avg. (86%)
Special Public Funding:	ICB°
Trauma Center Designation:	Adult: Level 1, Pedi: Level 1
Case Mix Index:	1.77, > cohort avg. (1.50); > statewide (1.12)

Financial

Inpatient NPSR per CMAD:	\$12,841
Change FY16-FY17:	1.0%
Inpatient:Outpatient Revenue in FY17:	46%:54%
Outpatient Revenue in FY17:	\$304,708,805
Change FY16-FY17:	10.9%
Total Revenue in FY17:	\$785,374,000
Total Surplus (Loss) in FY17:	\$12,282,000

Payer Mix

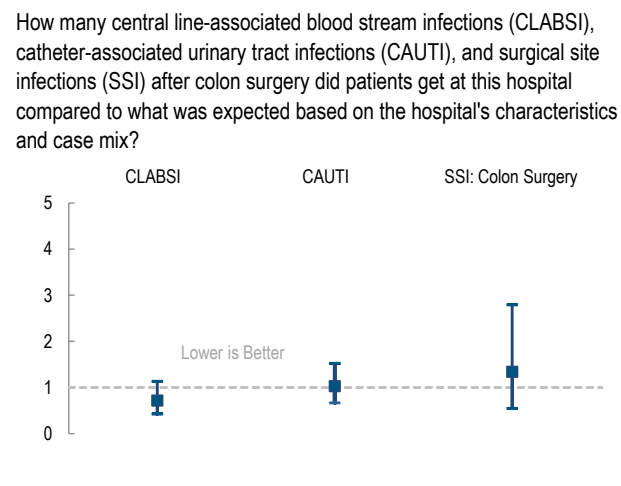
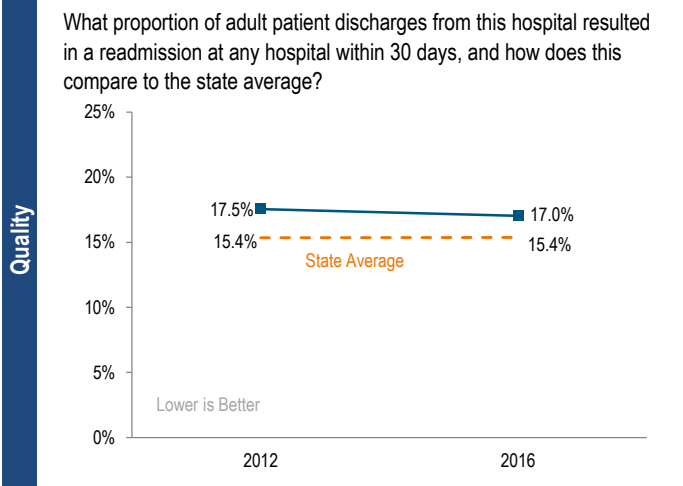
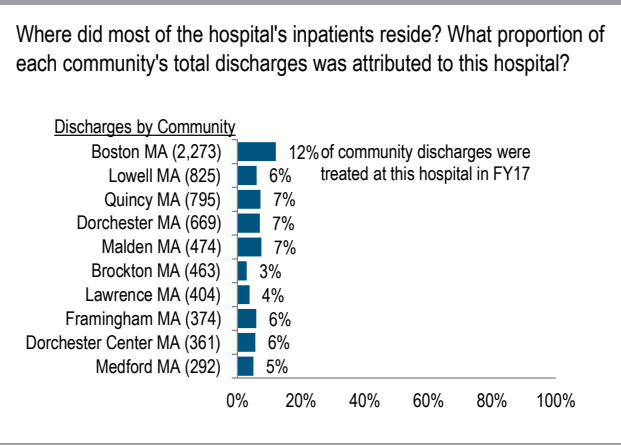
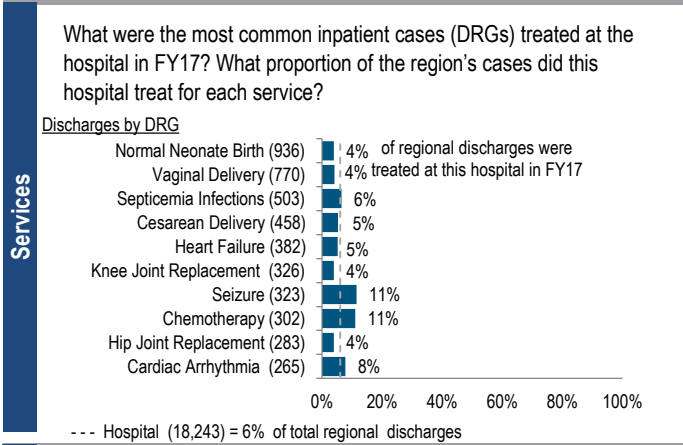
Public Payer Mix:	61.9% (Non-HPP* Hospital)
CY16 Commercial Statewide Relative Price:	1.05
Top 3 Commercial Payers:	Blue Cross Blue Shield of Massachusetts Tufts Associated HMO, Inc. Harvard Pilgrim Health Care

Utilization

Inpatient Discharges in FY17:	18,243
Change FY16-FY17:	1.6%
Emergency Department Visits in FY17:	45,952
Change FY16-FY17:	0.0%
Outpatient Visits in FY17:	441,342
Change FY16-FY17:	2.6%

Quality

Readmission Rate in FY16:	17.0%
Change FY12-FY16 (percentage points):	-0.5
Early Elective Deliveries Rate:	8.3%



For descriptions of the metrics, please see the technical appendix.

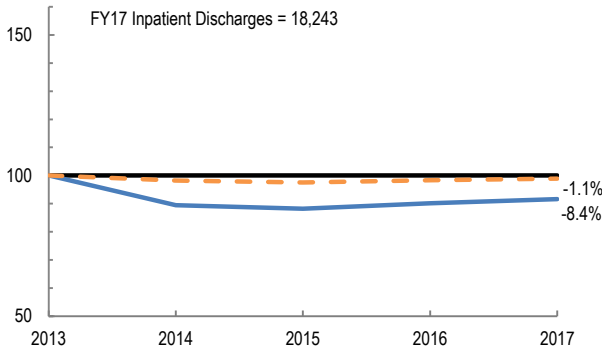
2017 HOSPITAL PROFILE: TUFTS MEDICAL CENTER

Cohort: Academic Medical Center

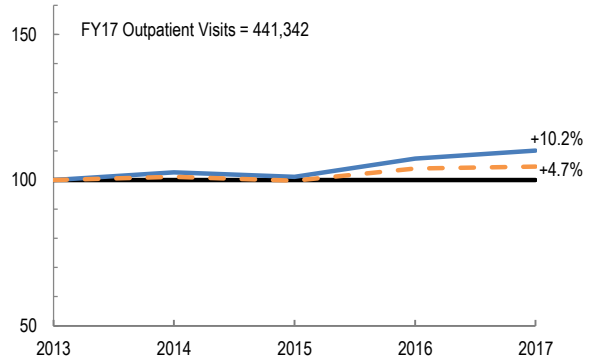


Utilization

How has the volume of the hospital's inpatient discharges changed compared to FY13, and how does this compare to the hospital's peer cohort median? (FY13=100)

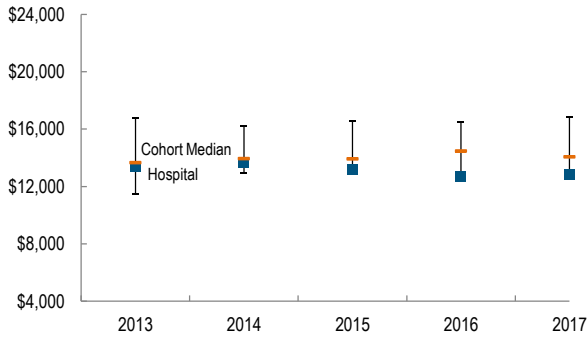


How has the volume of the hospital's outpatient visits changed compared to FY13, and how does this compare to the hospital's peer cohort median? (FY13=100)

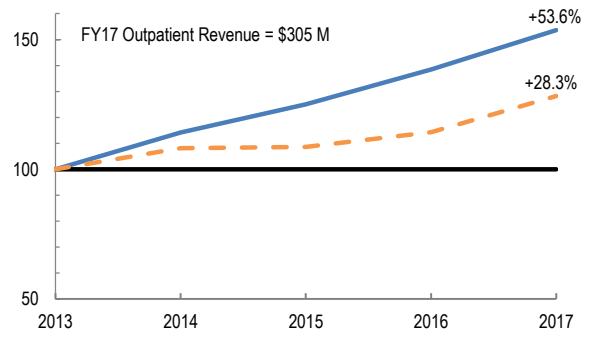


Patient Revenue Trends

What was the hospital's net inpatient service revenue per case mix adjusted discharge between FY13 and FY17, and how does this compare to the hospital's peer cohort median?



How has the hospital's total outpatient revenue changed compared to FY13, and how does this compare to the hospital's peer cohort median? (FY13=100)



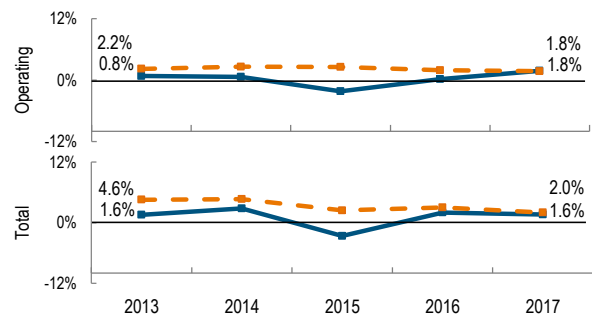
Financial Performance

How have the hospital's total revenue and costs changed between FY13 and FY17?

Revenue, Cost, & Profit/Loss (in millions)

FY	2013	2014	2015	2016	2017
Operating Revenue	\$ 655.9	\$ 685.1	\$ 689.3	\$ 740.3	\$ 787.2
Non-Operating Revenue	\$ 4.9	\$ 15.2	\$ (3.2)	\$ 13.1	\$ (1.9)
Total Revenue	\$ 660.7	\$ 700.3	\$ 686.1	\$ 753.4	\$ 785.4
Total Costs	\$ 650.5	\$ 680.6	\$ 704.3	\$ 738.6	\$ 773.1
Total Profit (Loss)	\$ 10.2	\$ 19.7	\$ (18.2)	\$ 14.8	\$ 12.3

What were the hospital's total margin and operating margins between FY13 and FY17, and how do these compare to the hospital's peer cohort medians?



For descriptions of the metrics, please see the technical appendix.

* High Public Payer Hospitals (HPP) receive a minimum of 63% of gross patient service revenue from public payers.

° For more information on Infrastructure and Capacity Building (ICB) special funding, please contact the Massachusetts Executive Office of Health and Human Services (EOHHS).