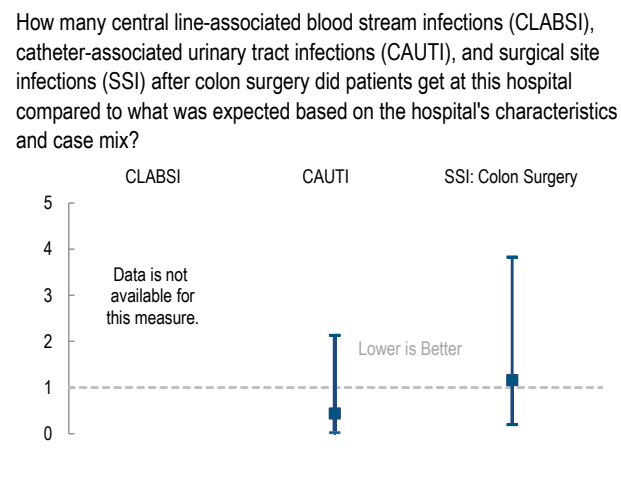
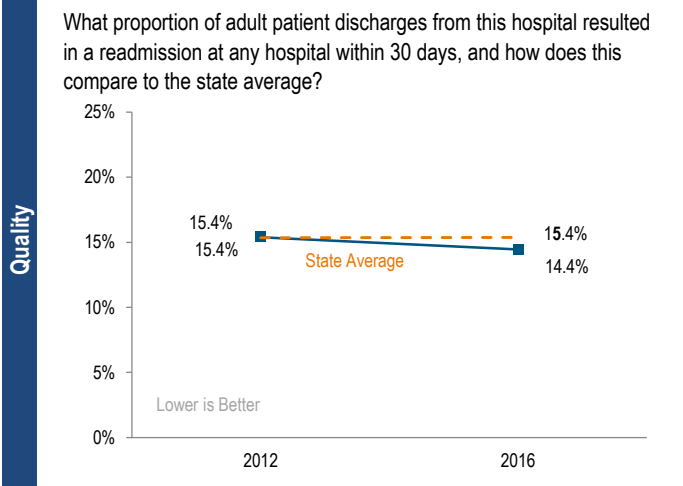
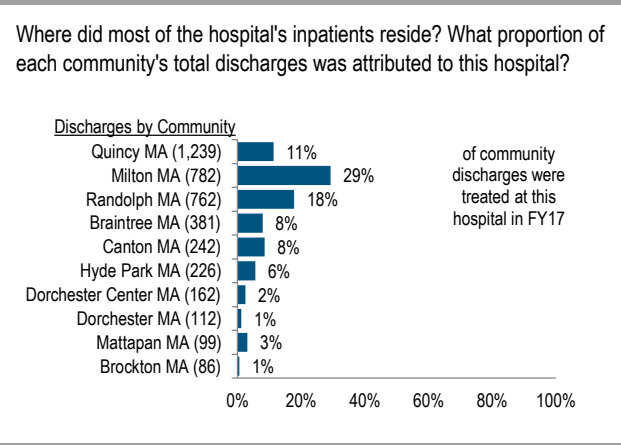
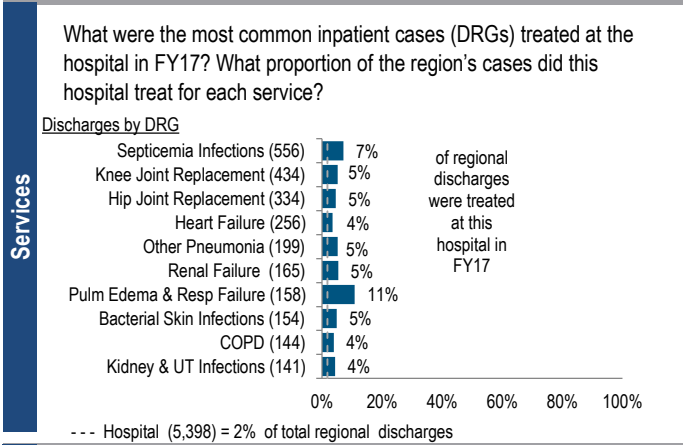


Beth Israel Deaconess Hospital – Milton (BID-Milton) is a non-profit community hospital located in the Metro Boston region. It is among the smaller acute hospitals in Massachusetts. It is a member of CareGroup. Between FY13 and FY17, there was a 6.9% increase in outpatient visits at the hospital, compared to a median increase of 3.5% in its peer cohort. It earned a profit each year in the five-year period, with a total margin of 11.9% in FY17, above its peer cohort median of 3.1%.

At a Glance	Overview / Size	
	Hospital System Affiliation:	CareGroup
	Change in Ownership (FY13-17):	Not Applicable
	Total Staffed Beds:	69, among the smaller acute hospitals
	% Occupancy:	84.8%, > cohort avg. (65%)
	Special Public Funding:	CHART [^] , ICB [°]
	Trauma Center Designation:	Not Applicable
	Case Mix Index:	1.05, > cohort avg. (0.85); < statewide (1.12)
	Financial	
	Inpatient NPSR per CMAD:	\$9,982
Change FY16-FY17:	-1.0%	
Inpatient:Outpatient Revenue in FY17:	36%:64%	
Outpatient Revenue in FY17:	\$49,027,536	
Change FY16-FY17:	4.2%	
Total Revenue in FY17:	\$119,684,620	
Total Surplus (Loss) in FY17:	\$14,218,816	
Payer Mix		
Public Payer Mix:	57.7% (Non-HPP* Hospital)	
CY16 Commercial Statewide Relative Price:	0.76	
Top 3 Commercial Payers:	Blue Cross Blue Shield of Massachusetts Harvard Pilgrim Health Care Tufts Associated HMO, Inc.	
Utilization		
Inpatient Discharges in FY17:	5,398	
Change FY16-FY17:	7.1%	
Emergency Department Visits in FY17:	26,573	
Change FY16-FY17:	-2.8%	
Outpatient Visits in FY17:	38,100	
Change FY16-FY17:	-1.9%	
Quality		
Readmission Rate in FY16:	14.4%	
Change FY12-FY16 (percentage points):	-0.9	
Early Elective Deliveries Rate:	Not Available	



For descriptions of the metrics, please see the technical appendix.

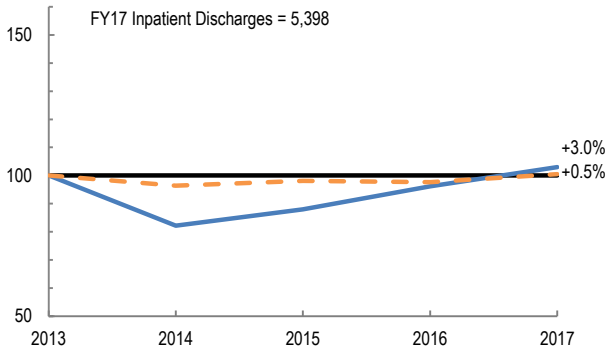
2017 HOSPITAL PROFILE: BETH ISRAEL DEACONESS HOSPITAL - MILTON

Cohort: Community Hospital

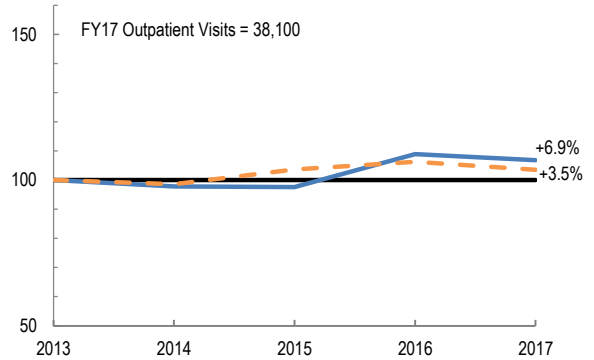


Utilization

How has the volume of the hospital's inpatient discharges changed compared to FY13, and how does this compare to the hospital's peer cohort median? (FY13=100)

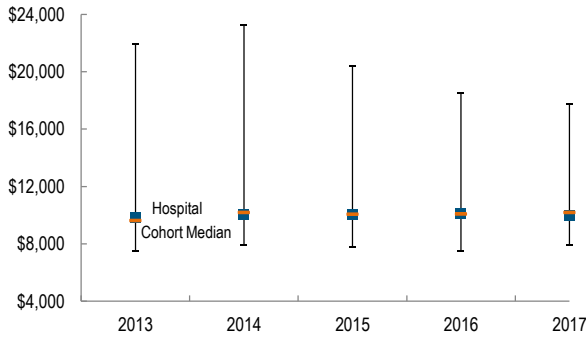


How has the volume of the hospital's outpatient visits changed compared to FY13, and how does this compare to the hospital's peer cohort median? (FY13=100)

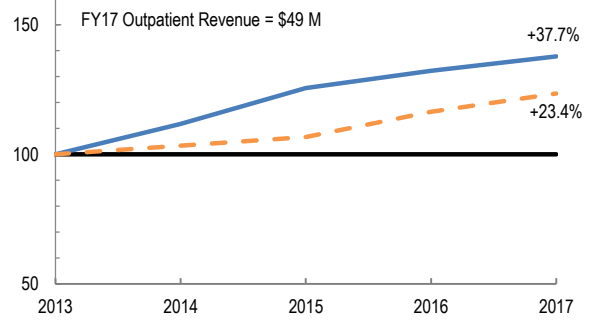


Patient Revenue Trends

What was the hospital's net inpatient service revenue per case mix adjusted discharge between FY13 and FY17, and how does this compare to the hospital's peer cohort median?



How has the hospital's total outpatient revenue changed compared to FY13, and how does this compare to the hospital's peer cohort median? (FY13=100)



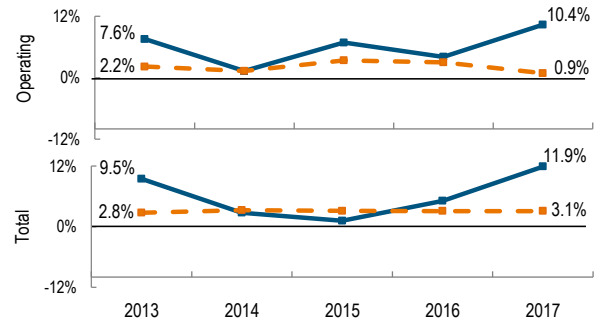
Financial Performance

How have the hospital's total revenue and costs changed between FY13 and FY17?

Revenue, Cost, & Profit/Loss (in millions)

FY	2013	2014	2015	2016	2017
Operating Revenue	\$ 84.1	\$ 83.1	\$ 96.3	\$ 105.5	\$ 117.9
Non-Operating Revenue	\$ 1.6	\$ 1.3	\$ (5.2)	\$ 1.1	\$ 1.8
Total Revenue	\$ 85.7	\$ 84.4	\$ 91.1	\$ 106.5	\$ 119.7
Total Costs	\$ 77.6	\$ 82.0	\$ 90.0	\$ 101.1	\$ 105.5
Total Profit (Loss)	\$ 8.1	\$ 2.4	\$ 1.1	\$ 5.4	\$ 14.2

What were the hospital's total margin and operating margins between FY13 and FY17, and how do these compare to the hospital's peer cohort medians?



For descriptions of the metrics, please see the technical appendix.

* High Public Payer Hospitals (HPP) receive a minimum of 63% of gross patient service revenue from public payers.

^ For more information on Community Hospital Acceleration, Revitalization and Transformation (CHART) special funding, please contact the Health Policy Commission (HPC).

° For more information on Infrastructure and Capacity Building (ICB) special funding, please contact the Massachusetts Executive Office of Health and Human Services (EOHHS).