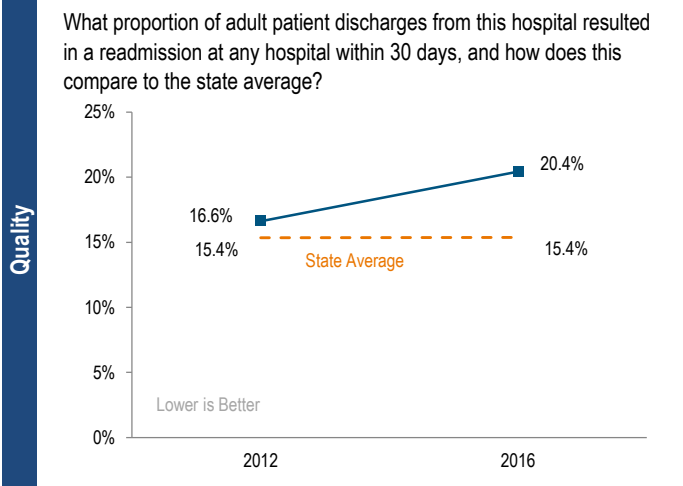
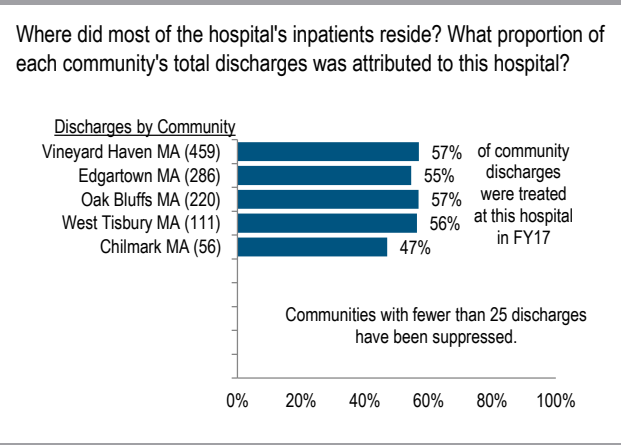
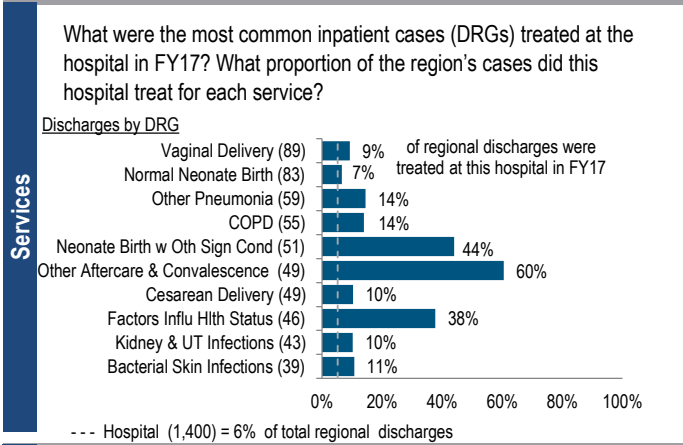


Martha's Vineyard Hospital is a small, non-profit community hospital located in the Cape and Islands region. It is a member of Partners HealthCare. Martha's Vineyard Hospital is designated by the Centers for Medicare & Medicaid Services (CMS) as one of three Critical Access Hospitals (CAH) in Massachusetts. It was profitable each year from FY13 to FY17, with a total margin of 7.0% in FY17, compared to a median total margin of 3.1% among peer cohort hospitals. In FY17, Martha's Vineyard Hospital had 15.8% more inpatient discharges than in FY13, compared with a median increase of 0.5% in its peer cohort.

At a Glance	Overview / Size		Payer Mix	
	Hospital System Affiliation:	Partners HealthCare System	Public Payer Mix:	61.5% (Non-HPP* Hospital)
	Change in Ownership (FY13-17):	Not Applicable	CY16 Commercial Statewide Relative Price:	2.22
	Total Staffed Beds:	31, among the smallest acute hospitals	Top 3 Commercial Payers:	Blue Cross Blue Shield of Massachusetts Neighborhood Health Plan Harvard Pilgrim Health Care
	% Occupancy:	47.5%, < cohort avg. (65%)	Utilization	
	Special Public Funding:	Not Applicable	Inpatient Discharges in FY17:	1,400
	Trauma Center Designation:	Not Applicable	Change FY16-FY17:	12.8%
	Case Mix Index:	0.72, < cohort avg. (0.85); < statewide (1.12)	Emergency Department Visits in FY17:	14,775
			Change FY16-FY17:	-3.5%
			Outpatient Visits in FY17:	59,951
		Change FY16-FY17:	2.0%	
		Quality		
Financial		Readmission Rate in FY16:	20.4%	
Inpatient NPSR per CMAD:	\$17,764	Change FY12-FY16 (percentage points):	3.8	
Change FY16-FY17:	-3.8%	Early Elective Deliveries Rate:	Not Available	
Inpatient:Outpatient Revenue in FY17:	16%:84%			
Outpatient Revenue in FY17:	\$61,865,558			
Change FY16-FY17:	5.2%			
Total Revenue in FY17:	\$90,239,000			
Total Surplus (Loss) in FY17:	\$6,345,000			



How many central line-associated blood stream infections (CLABSI), catheter-associated urinary tract infections (CAUTI), and surgical site infections (SSI) after colon surgery did patients get at this hospital compared to what was expected based on the hospital's characteristics and case mix?

Data is not available for these measures.

For descriptions of the metrics, please see the technical appendix.

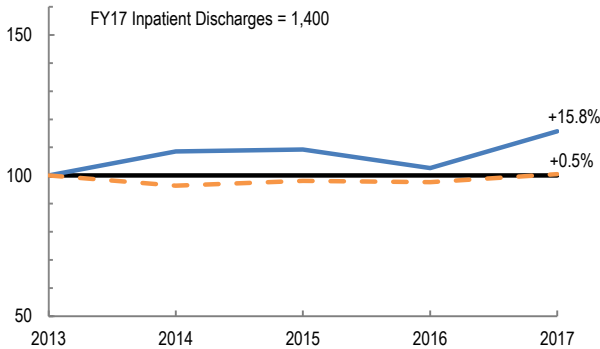
2017 HOSPITAL PROFILE: MARTHA'S VINEYARD HOSPITAL

Cohort: Community Hospital

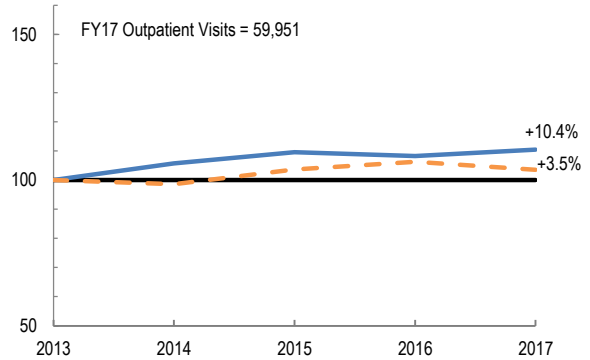


Utilization

How has the volume of the hospital's inpatient discharges changed compared to FY13, and how does this compare to the hospital's peer cohort median? (FY13=100)

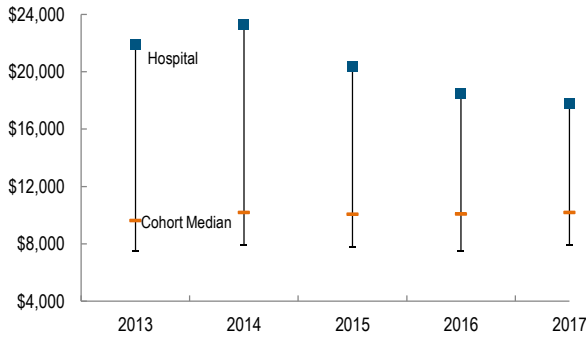


How has the volume of the hospital's outpatient visits changed compared to FY13, and how does this compare to the hospital's peer cohort median? (FY13=100)

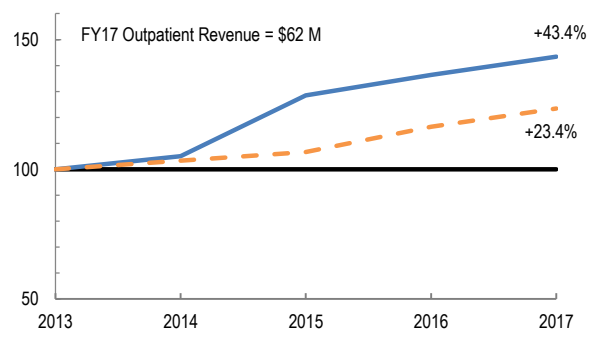


Patient Revenue Trends

What was the hospital's net inpatient service revenue per case mix adjusted discharge between FY13 and FY17, and how does this compare to the hospital's peer cohort median?



How has the hospital's total outpatient revenue changed compared to FY13, and how does this compare to the hospital's peer cohort median? (FY13=100)



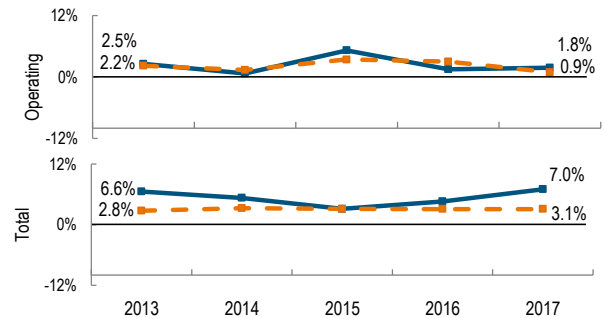
Financial Performance

How have the hospital's total revenue and costs changed between FY13 and FY17?

Revenue, Cost, & Profit/Loss (in millions)

FY	2013	2014	2015	2016	2017
Operating Revenue	\$ 62.4	\$ 68.9	\$ 76.5	\$ 77.6	\$ 85.6
Non-Operating Revenue	\$ 2.6	\$ 3.3	\$ (1.5)	\$ 2.5	\$ 4.7
Total Revenue	\$ 65.0	\$ 72.2	\$ 75.0	\$ 80.1	\$ 90.2
Total Costs	\$ 60.8	\$ 68.4	\$ 72.6	\$ 76.4	\$ 83.9
Total Profit (Loss)	\$ 4.3	\$ 3.8	\$ 2.4	\$ 3.7	\$ 6.3

What were the hospital's total margin and operating margins between FY13 and FY17, and how do these compare to the hospital's peer cohort medians?



For descriptions of the metrics, please see the technical appendix.

* High Public Payer Hospitals (HPP) receive a minimum of 63% of gross patient service revenue from public payers.