

Lahey Hospital & Medical Center is a non-profit teaching hospital located in the Northeastern Massachusetts region. It is among the larger acute hospitals in Massachusetts and one of nine transplant centers in Massachusetts. Lahey Hospital & Medical Center saw an increase of 12.6% in inpatient discharges from FY13 to FY17. In the same period, outpatient visits decreased by 15.7%, compared to the cohort median decrease of 2.2%. Lahey Hospital & Medical Center has been profitable each year from FY13 to FY17. In each of the five years, the total margin of the hospital has been at or near the median of its peer cohort hospitals.

At a Glance

### Overview / Size

Hospital System Affiliation:	Lahey Health System
Change in Ownership (FY13-17):	Not Applicable
Total Staffed Beds:	345, among the larger acute hospitals
% Occupancy:	89.0%, > cohort avg. (81%)
Special Public Funding:	CHART <sup>^</sup> , ICB <sup>°</sup>
Trauma Center Designation:	Adult: Level 2
Case Mix Index:	1.52, > cohort avg. (1.11); > statewide (1.12)

### Financial

Inpatient NPSR per CMAD:	\$12,031
Change FY16-FY17:	0.3%
Inpatient:Outpatient Revenue in FY17:	33%:67%
Outpatient Revenue in FY17:	\$475,286,784
Change FY16-FY17:	2.7%
Total Revenue in FY17:	\$943,042,542
Total Surplus (Loss) in FY17:	\$18,846,421

### Payer Mix

Public Payer Mix:	60.1% (Non-HPP* Hospital)
CY16 Commercial Statewide Relative Price:	1.04
Top 3 Commercial Payers:	Blue Cross Blue Shield of Massachusetts Harvard Pilgrim Health Care Tufts Associated HMO, Inc.

### Utilization

Inpatient Discharges in FY17:	23,556
Change FY16-FY17:	-1.0%
Emergency Department Visits in FY17:	63,391
Change FY16-FY17:	3.2%
Outpatient Visits in FY17:	779,708
Change FY16-FY17:	-1.8%

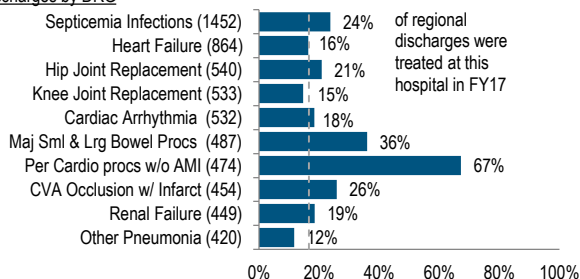
### Quality

Readmission Rate in FY16:	15.8%
Change FY12-FY16 (percentage points):	0.6
Early Elective Deliveries Rate:	Not Available

Services

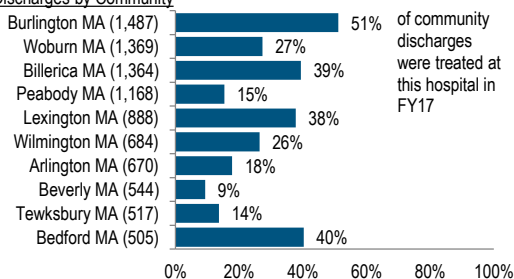
What were the most common inpatient cases (DRGs) treated at the hospital in FY17? What proportion of the region's cases did this hospital treat for each service?

Discharges by DRG



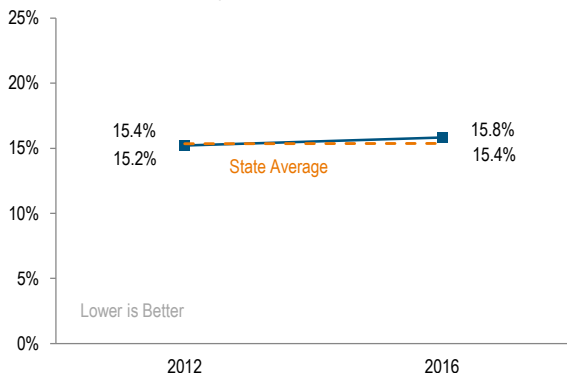
Where did most of the hospital's inpatients reside? What proportion of each community's total discharges was attributed to this hospital?

Discharges by Community

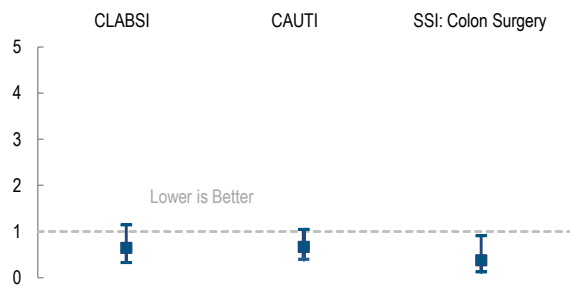


Quality

What proportion of adult patient discharges from this hospital resulted in a readmission at any hospital within 30 days, and how does this compare to the state average?



How many central line-associated blood stream infections (CLABSI), catheter-associated urinary tract infections (CAUTI), and surgical site infections (SSI) after colon surgery did patients get at this hospital compared to what was expected based on the hospital's characteristics and case mix?



For descriptions of the metrics, please see the technical appendix.

# 2017 HOSPITAL PROFILE: LAHEY HOSPITAL & MEDICAL CENTER

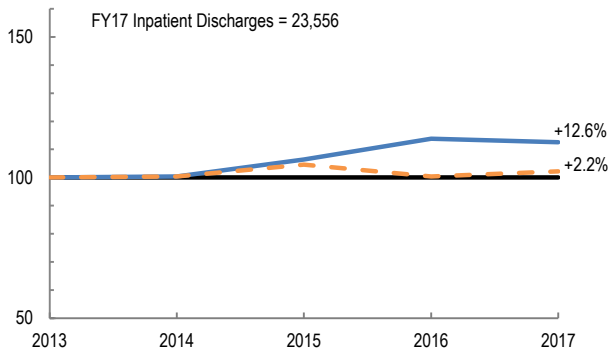
Cohort: Teaching Hospital

Key:

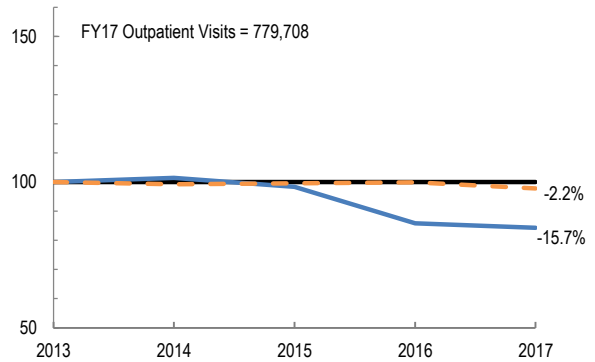
- Hospital
- - - Peer Cohort

Utilization

How has the volume of the hospital's inpatient discharges changed compared to FY13, and how does this compare to the hospital's peer cohort median? (FY13=100)

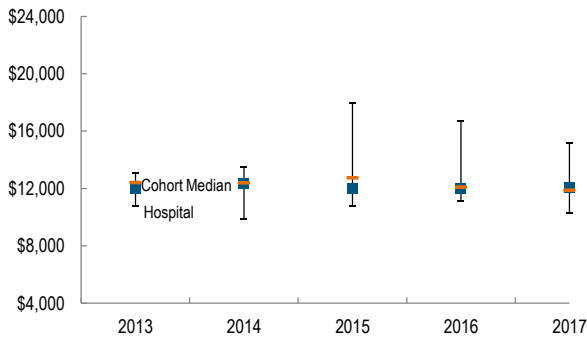


How has the volume of the hospital's outpatient visits changed compared to FY13, and how does this compare to the hospital's peer cohort median? (FY13=100)

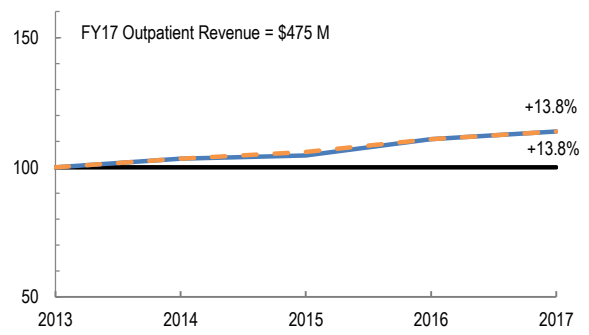


Patient Revenue Trends

What was the hospital's net inpatient service revenue per case mix adjusted discharge between FY13 and FY17, and how does this compare to the hospital's peer cohort median?



How has the hospital's total outpatient revenue changed compared to FY13, and how does this compare to the hospital's peer cohort median? (FY13=100)



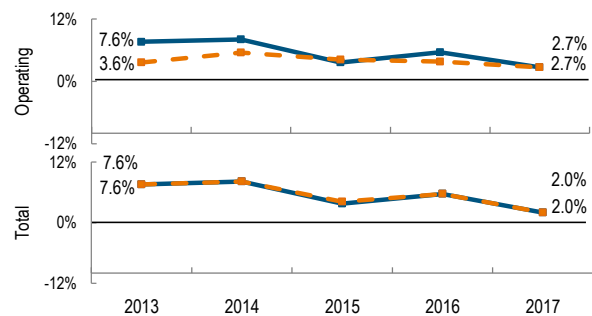
Financial Performance

How have the hospital's total revenue and costs changed between FY13 and FY17?

Revenue, Cost, & Profit/Loss (in millions)

FY	2013	2014	2015	2016	2017
<b>Operating Revenue</b>	\$ 794.3	\$ 821.4	\$ 836.9	\$ 923.6	\$ 949.2
<b>Non-Operating Revenue</b>	\$ (0.4)	\$ 1.0	\$ 0.8	\$ 0.9	\$ (6.2)
<b>Total Revenue</b>	\$ 793.9	\$ 822.3	\$ 837.6	\$ 924.4	\$ 943.0
<b>Total Costs</b>	\$ 733.8	\$ 755.2	\$ 806.2	\$ 872.1	\$ 924.2
<b>Total Profit (Loss)</b>	\$ 60.1	\$ 67.2	\$ 31.4	\$ 52.4	\$ 18.8

What were the hospital's total margin and operating margins between FY13 and FY17, and how do these compare to the hospital's peer cohort medians?



For descriptions of the metrics, please see the technical appendix.

\* High Public Payer Hospitals (HPP) receive a minimum of 63% of gross patient service revenue from public payers.

^ For more information on Community Hospital Acceleration, Revitalization and Transformation (CHART) special funding, please contact the Health Policy Commission (HPC).

° For more information on Infrastructure and Capacity Building (ICB) special funding, please contact the Massachusetts Executive Office of Health and Human Services (EOHHS).