

# HARRINGTON MEMORIAL HOSPITAL

## 2017 Hospital Profile

Southbridge, MA  
Community High Public Payer Hospital  
Central Massachusetts

Harrington Memorial Hospital is a mid-size, non-profit community-High Public Payer (HPP) hospital located in the Central Massachusetts region. Outpatient visits at Harrington increased 19.1% between FY13 and FY17, compared to its peer cohort median increase of 2.3%. Though it was only responsible for 6% of the discharges in its region, it treated 27% of Bipolar Disorders, 23% of Schizophrenia cases, and 22% of Depression cases region-wide in FY17. Harrington reported a profit in each year of the five-year period. In FY17, its total margin of 6.5% was higher than its peer cohort median of 3.8%.

**Overview / Size**

Hospital System Affiliation:	Harrington Healthcare System, Inc.
Change in Ownership (FY13-17):	Not Applicable
Total Staffed Beds:	142, mid-size acute hospital
% Occupancy:	39.2%, < cohort avg. (66%)
Special Public Funding:	CHART <sup>^</sup> , ICB <sup>°</sup>
Trauma Center Designation:	Not Applicable
Case Mix Index:	0.81, < cohort avg. (0.92); < statewide (1.12)

**Financial**

Inpatient NPSR per CMAD:	\$7,503
Change FY16-FY17:	7.8%
Inpatient:Outpatient Revenue in FY17:	19%:81%
Outpatient Revenue in FY17:	\$99,047,970
Change FY16-FY17:	-2.2%
Total Revenue in FY17:	\$142,682,074
Total Surplus (Loss) in FY17:	\$9,297,652

**Payer Mix**

Public Payer Mix:	65.3% (HPP* Hospital)
CY16 Commercial Statewide Relative Price:	0.90
Top 3 Commercial Payers:	Blue Cross Blue Shield of Massachusetts Fallon Community Health Plan Harvard Pilgrim Health Care

**Utilization**

Inpatient Discharges in FY17:	4,650
Change FY16-FY17:	13.2%
Emergency Department Visits in FY17:	44,233
Change FY16-FY17:	2.3%
Outpatient Visits in FY17:	80,728
Change FY16-FY17:	3.7%

**Quality**

Readmission Rate in FY16:	15.9%
Change FY12-FY16 (percentage points):	1.2
Early Elective Deliveries Rate:	Not Available

What were the most common inpatient cases (DRGs) treated at the hospital in FY17? What proportion of the region's cases did this hospital treat for each service?

**Discharges by DRG**

--- Hospital (4,650) = 6% of total regional discharges

Where did most of the hospital's inpatients reside? What proportion of each community's total discharges was attributed to this hospital?

**Discharges by Community**

--- 6% of community discharges were treated at this hospital in FY17

What proportion of adult patient discharges from this hospital resulted in a readmission at any hospital within 30 days, and how does this compare to the state average?

**Quality**

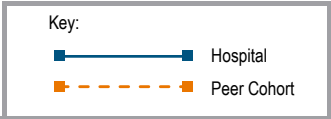
How many central line-associated blood stream infections (CLABSI), catheter-associated urinary tract infections (CAUTI), and surgical site infections (SSI) after colon surgery did patients get at this hospital compared to what was expected based on the hospital's characteristics and case mix?

**Quality**

For descriptions of the metrics, please see the technical appendix.

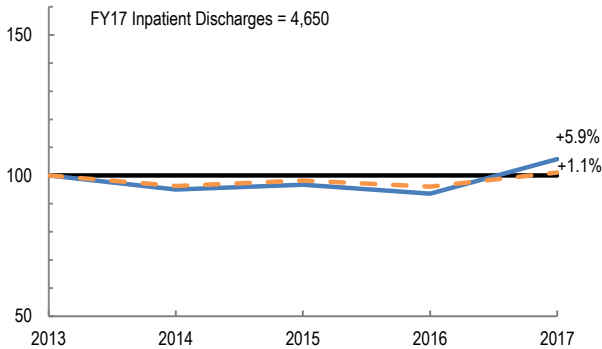
# 2017 HOSPITAL PROFILE: HARRINGTON MEMORIAL HOSPITAL

Cohort: Community High Public Payer Hospital

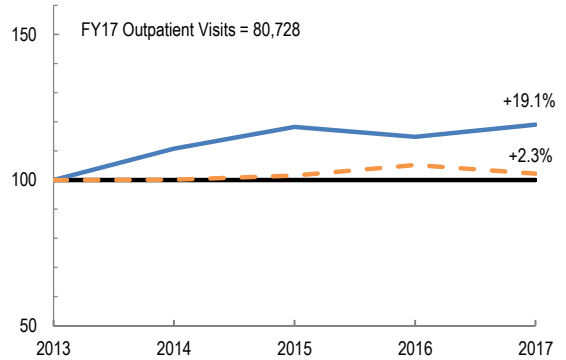


Utilization

How has the volume of the hospital's inpatient discharges changed compared to FY13, and how does this compare to the hospital's peer cohort median? (FY13=100)

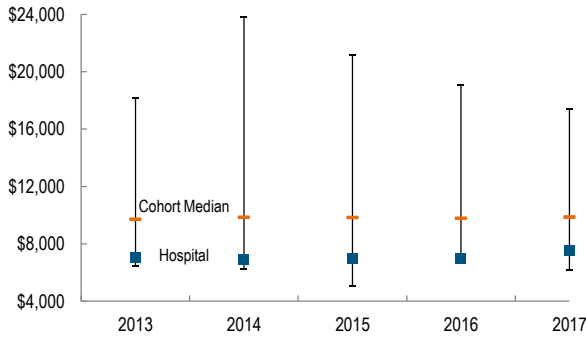


How has the volume of the hospital's outpatient visits changed compared to FY13, and how does this compare to the hospital's peer cohort median? (FY13=100)

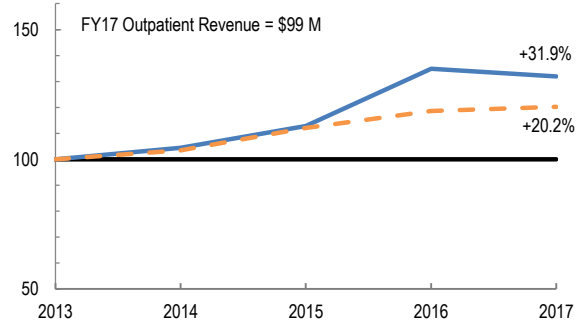


Patient Revenue Trends

What was the hospital's net inpatient service revenue per case mix adjusted discharge between FY13 and FY17, and how does this compare to the hospital's peer cohort median?



How has the hospital's total outpatient revenue changed compared to FY13, and how does this compare to the hospital's peer cohort median? (FY13=100)



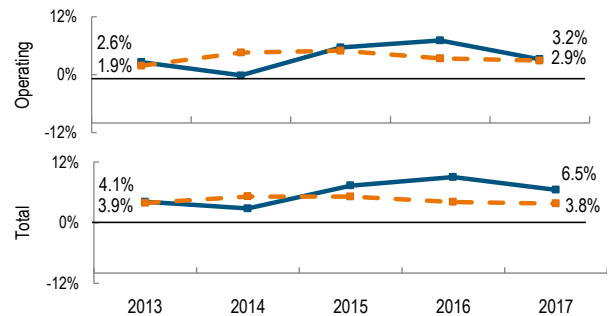
Financial Performance

How have the hospital's total revenue and costs changed between FY13 and FY17?

**Revenue, Cost, & Profit/Loss (in millions)**

FY	2013	2014	2015	2016	2017
<b>Operating Revenue</b>	\$ 110.3	\$ 113.4	\$ 124.0	\$ 135.5	\$ 137.9
<b>Non-Operating Revenue</b>	\$ 1.7	\$ 3.5	\$ 2.1	\$ 2.6	\$ 4.7
<b>Total Revenue</b>	\$ 112.0	\$ 116.9	\$ 126.1	\$ 138.0	\$ 142.7
<b>Total Costs</b>	\$ 107.4	\$ 113.6	\$ 116.9	\$ 125.6	\$ 133.4
<b>Total Profit (Loss)</b>	\$ 4.6	\$ 3.3	\$ 9.3	\$ 12.4	\$ 9.3

What were the hospital's total margin and operating margins between FY13 and FY17, and how do these compare to the hospital's peer cohort medians?



For descriptions of the metrics, please see the technical appendix.

\* High Public Payer Hospitals (HPP) receive a minimum of 63% of gross patient service revenue from public payers.

^ For more information on Community Hospital Acceleration, Revitalization and Transformation (CHART) special funding, please contact the Health Policy Commission (HPC).

° For more information on Infrastructure and Capacity Building (ICB) special funding, please contact the Massachusetts Executive Office of Health and Human Services (EOHHS).