

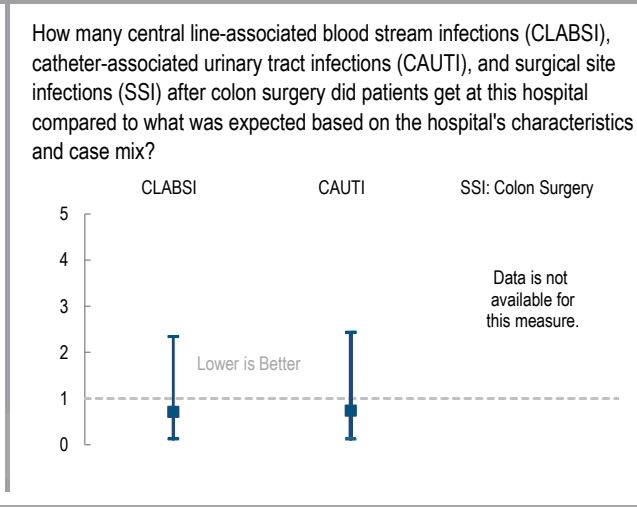
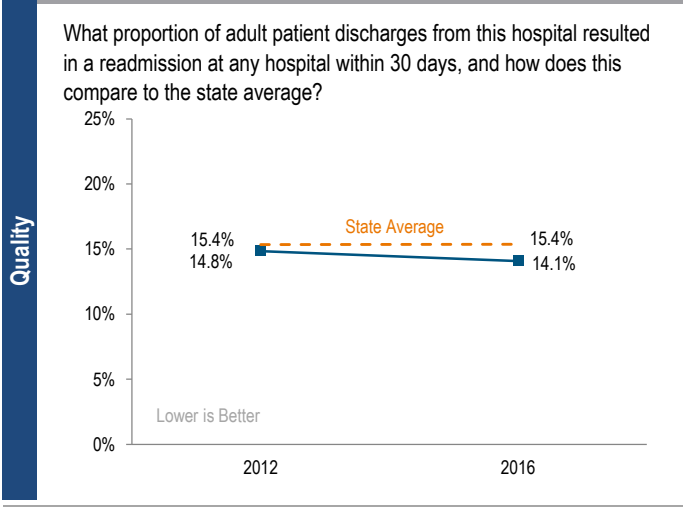
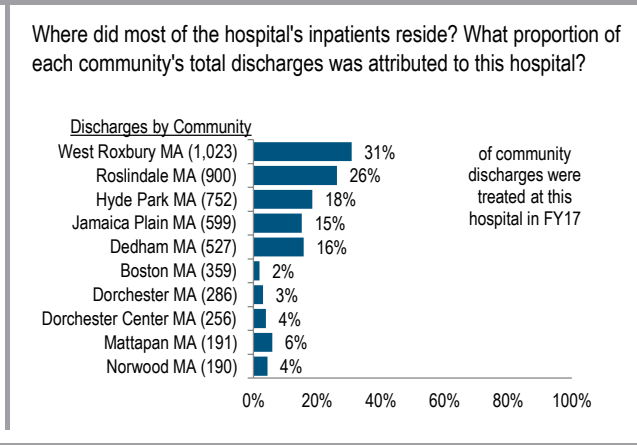
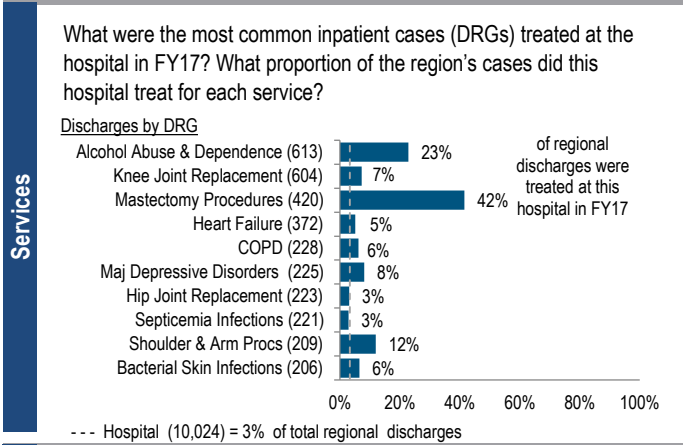
BRIGHAM AND WOMEN'S FAULKNER HOSPITAL

2017 Hospital Profile

Boston, MA
Community Hospital
Metro Boston

Brigham and Women's Faulkner Hospital is a non-profit community hospital located in the Metro Boston region. It is a mid-size acute hospital and a member of Partners HealthCare. Though it only accounted for 3% of total regional discharges in FY17, it treated 23% of Alcohol Abuse and Dependence cases and 42% of Mastectomy Procedures in Metro Boston. Inpatient discharges at the hospital increased by 39% between FY13 and FY17, while there was a median increase of 0.5% in its peer cohort during that period. The hospital reported a profit for the fourth consecutive year. In FY17, both its operating and total margins were 6.2%, above its corresponding peer cohort medians of 0.9% operating and 3.1% total.

| Overview / Size | | Payer Mix | |
|---------------------------------------|--|---|--|
| Hospital System Affiliation: | Partners HealthCare System | Public Payer Mix: | 58.1% (Non-HPP* Hospital) |
| Change in Ownership (FY13-17): | Not Applicable | CY16 Commercial Statewide Relative Price: | 1.01 |
| Total Staffed Beds: | 162, mid-size acute hospital | Top 3 Commercial Payers: | Blue Cross Blue Shield of Massachusetts Harvard Pilgrim Health Care Tufts Associated HMO, Inc. |
| % Occupancy: | 65.5%, = cohort avg. (65%) | | |
| Special Public Funding: | ICB° | | |
| Trauma Center Designation: | Not Applicable | | |
| Case Mix Index: | 0.95, > cohort avg. (0.85); < statewide (1.12) | | |
| Financial | | Utilization | |
| Inpatient NPSR per CMAD: | \$12,770 | Inpatient Discharges in FY17: | 10,024 |
| Change FY16-FY17: | -2.1% | Change FY16-FY17: | 8.1% |
| Inpatient:Outpatient Revenue in FY17: | 38%:62% | Emergency Department Visits in FY17: | 28,213 |
| Outpatient Revenue in FY17: | \$145,068,815 | Change FY16-FY17: | 2.4% |
| Change FY16-FY17: | 11.8% | Outpatient Visits in FY17: | 33,169 |
| Total Revenue in FY17: | \$275,321,000 | Change FY16-FY17: | 3.8% |
| Total Surplus (Loss) in FY17: | \$17,148,000 | | |
| | | Quality | |
| | | Readmission Rate in FY16: | 14.1% |
| | | Change FY12-FY16 (percentage points): | -0.8 |
| | | Early Elective Deliveries Rate: | Not Available |



For descriptions of the metrics, please see the technical appendix.

2017 HOSPITAL PROFILE: BRIGHAM AND WOMEN'S FAULKNER HOSPITAL

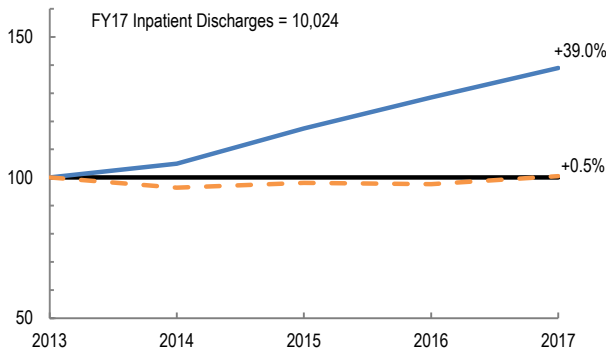
Cohort: Community Hospital

Key:

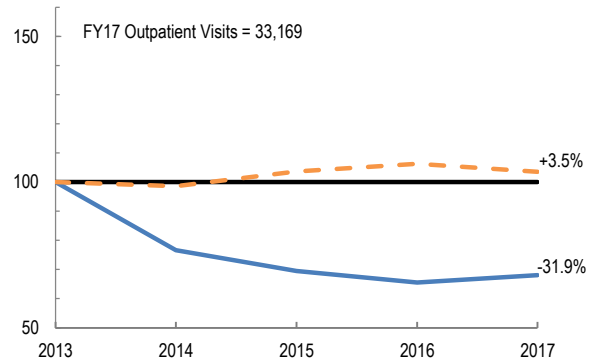
- Hospital
- Peer Cohort

Utilization

How has the volume of the hospital's inpatient discharges changed compared to FY13, and how does this compare to the hospital's peer cohort median? (FY13=100)

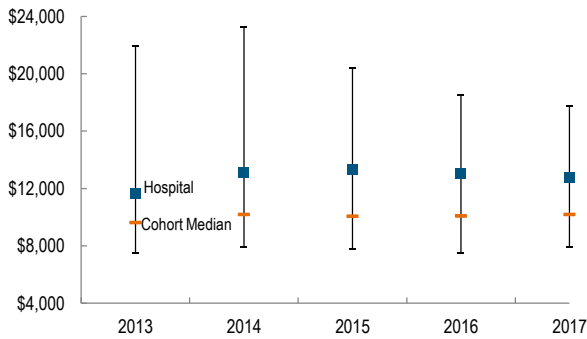


How has the volume of the hospital's outpatient visits changed compared to FY13, and how does this compare to the hospital's peer cohort median? (FY13=100)

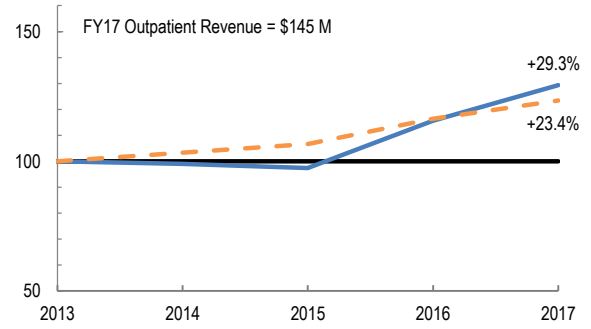


Patient Revenue Trends

What was the hospital's net inpatient service revenue per case mix adjusted discharge between FY13 and FY17, and how does this compare to the hospital's peer cohort median?



How has the hospital's total outpatient revenue changed compared to FY13, and how does this compare to the hospital's peer cohort median? (FY13=100)



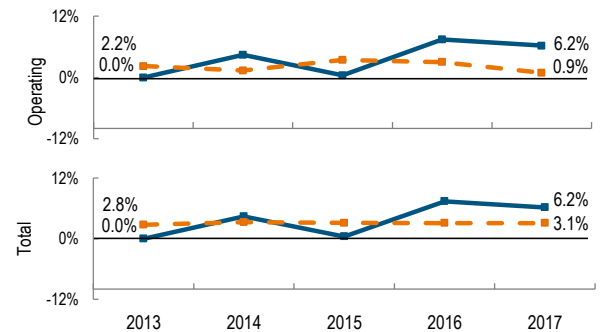
Financial Performance

How have the hospital's total revenue and costs changed between FY13 and FY17?

Revenue, Cost, & Profit/Loss (in millions)

| FY | 2013 | 2014 | 2015 | 2016 | 2017 |
|------------------------------|----------|----------|----------|----------|----------|
| Operating Revenue | \$ 192.6 | \$ 208.0 | \$ 219.0 | \$ 254.9 | \$ 275.3 |
| Non-Operating Revenue | \$ 0.0 | \$ (0.0) | \$ 0.1 | \$ (0.1) | \$ 0.1 |
| Total Revenue | \$ 192.6 | \$ 208.0 | \$ 219.1 | \$ 254.7 | \$ 275.3 |
| Total Costs | \$ 192.6 | \$ 198.8 | \$ 218.2 | \$ 235.9 | \$ 258.2 |
| Total Profit (Loss) | \$ (0.0) | \$ 9.2 | \$ 1.0 | \$ 18.8 | \$ 17.1 |

What were the hospital's total margin and operating margins between FY13 and FY17, and how do these compare to the hospital's peer cohort medians?



For descriptions of the metrics, please see the technical appendix.

* High Public Payer Hospitals (HPP) receive a minimum of 63% of gross patient service revenue from public payers.

° For more information on Infrastructure and Capacity Building (ICB) special funding, please contact the Massachusetts Executive Office of Health and Human Services (EOHHS).

