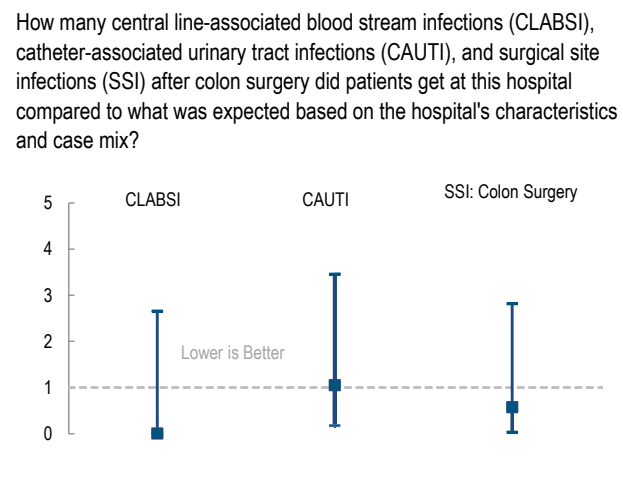
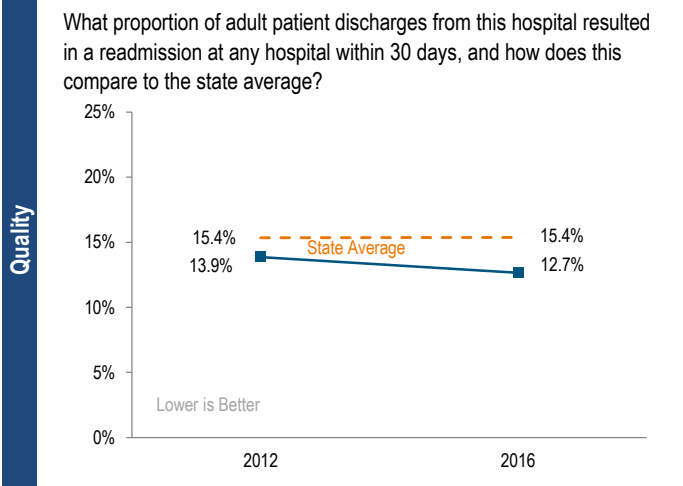
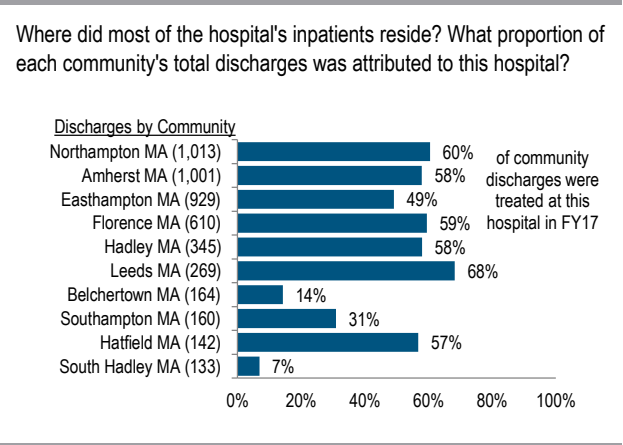
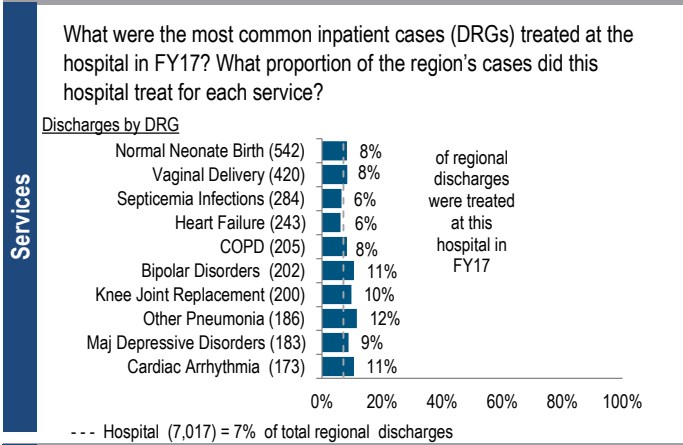


Cooley Dickinson Hospital is a community hospital located in the Western Massachusetts region. It is among the smaller acute hospitals in Massachusetts and a member of Partners HealthCare. Between FY13 and FY17, inpatient discharges at the hospital have decreased by 13.8%, compared with a median increase of 0.5% among cohort hospitals. In the same period, outpatient visits increased by 1.4%, compared to a 3.5% median increase in its cohort. Cooley Dickinson has posted profits in each of the last three consecutive years and four years out of the five-year period.

Overview / Size		Payer Mix	
Hospital System Affiliation:	Partners HealthCare System	Public Payer Mix:	60.6% (Non-HPP* Hospital)
Change in Ownership (FY13-17):	Partners - 2013	CY16 Commercial Statewide Relative Price:	1.01
Total Staffed Beds:	91, among the smaller acute hospitals	Top 3 Commercial Payers:	Blue Cross Blue Shield of Massachusetts Health New England, Inc. Harvard Pilgrim Health Care
% Occupancy:	90.8%, > cohort avg. (65%)		
Special Public Funding:	ICB°		
Trauma Center Designation:	Not Applicable		
Case Mix Index:	0.87, > cohort avg. (0.85); < statewide (1.12)		
Financial		Utilization	
Inpatient NPSR per CMAD:	\$9,443	Inpatient Discharges in FY17:	7,017
Change FY16-FY17:	-5.4%	Change FY16-FY17:	-2.0%
Inpatient:Outpatient Revenue in FY17:	32%:68%	Emergency Department Visits in FY17:	33,127
Outpatient Revenue in FY17:	\$120,002,798	Change FY16-FY17:	-1.6%
Change FY16-FY17:	8.7%	Outpatient Visits in FY17:	54,175
Total Revenue in FY17:	\$187,256,000	Change FY16-FY17:	4.0%
Total Surplus (Loss) in FY17:	\$4,866,000		
		Quality	
		Readmission Rate in FY16:	12.7%
		Change FY12-FY16 (percentage points):	-1.2
		Early Elective Deliveries Rate:	0.0%



For descriptions of the metrics, please see the technical appendix.

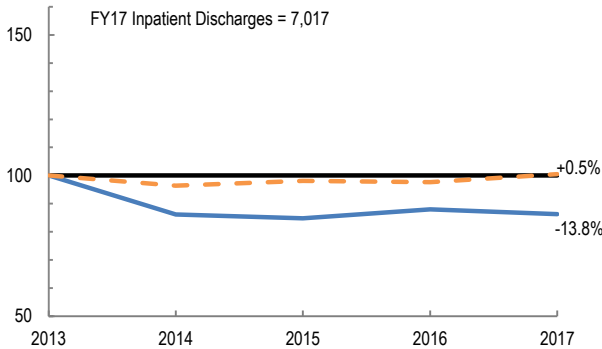
2017 HOSPITAL PROFILE: COOLEY DICKINSON HOSPITAL

Cohort: Community Hospital

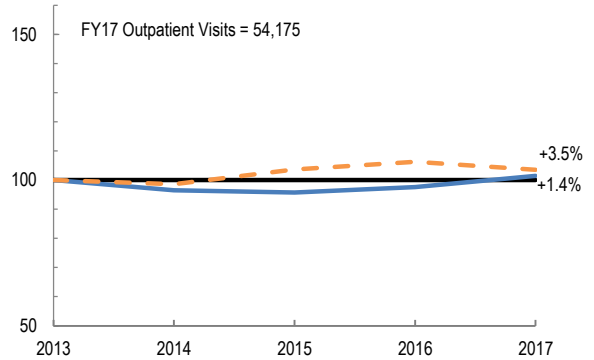


Utilization

How has the volume of the hospital's inpatient discharges changed compared to FY13, and how does this compare to the hospital's peer cohort median? (FY13=100)

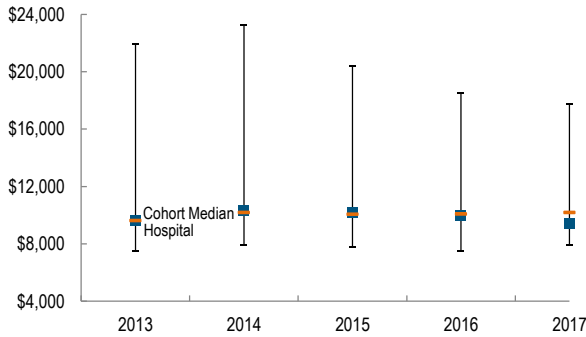


How has the volume of the hospital's outpatient visits changed compared to FY13, and how does this compare to the hospital's peer cohort median? (FY13=100)

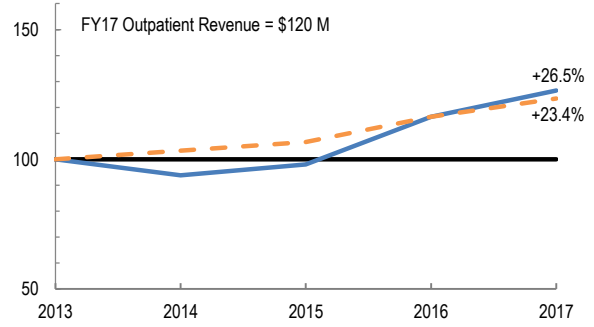


Patient Revenue Trends

What was the hospital's net inpatient service revenue per case mix adjusted discharge between FY13 and FY17, and how does this compare to the hospital's peer cohort median?



How has the hospital's total outpatient revenue changed compared to FY13, and how does this compare to the hospital's peer cohort median? (FY13=100)



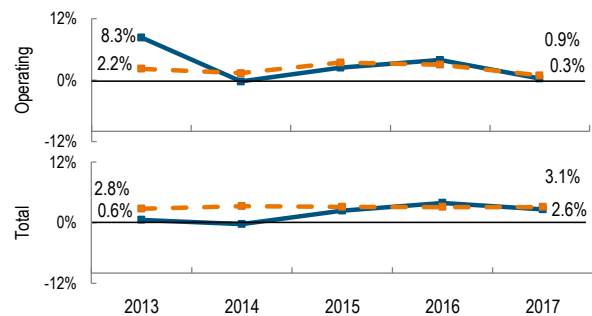
Financial Performance

How have the hospital's total revenue and costs changed between FY13 and FY17?

Revenue, Cost, & Profit/Loss (in millions)

FY	2013	2014	2015	2016	2017
Operating Revenue	\$ 161.4	\$ 153.4	\$ 157.5	\$ 178.1	\$ 183.0
Non-Operating Revenue	\$ (11.6)	\$ 0.0	\$ (0.1)	\$ 0.1	\$ 4.2
Total Revenue	\$ 149.8	\$ 153.4	\$ 157.4	\$ 178.1	\$ 187.3
Total Costs	\$ 149.0	\$ 153.8	\$ 153.7	\$ 171.2	\$ 182.4
Total Profit (Loss)	\$ 0.8	\$ (0.4)	\$ 3.7	\$ 7.0	\$ 4.9

What were the hospital's total margin and operating margins between FY13 and FY17, and how do these compare to the hospital's peer cohort medians?



For descriptions of the metrics, please see the technical appendix.

* High Public Payer Hospitals (HPP) receive a minimum of 63% of gross patient service revenue from public payers.

° For more information on Infrastructure and Capacity Building (ICB) special funding, please contact the Massachusetts Executive Office of Health and Human Services (EOHHS).