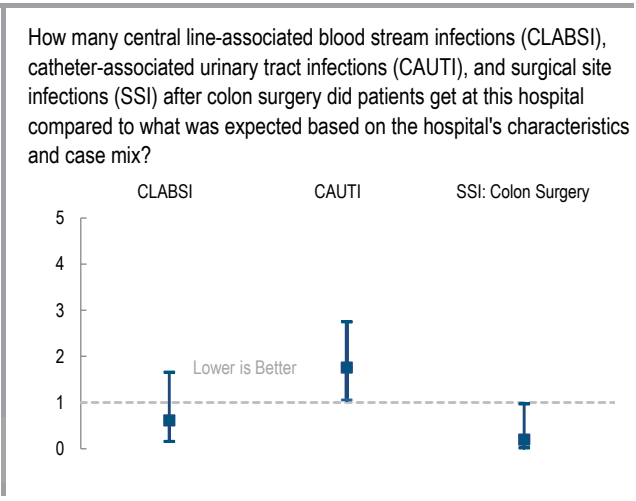
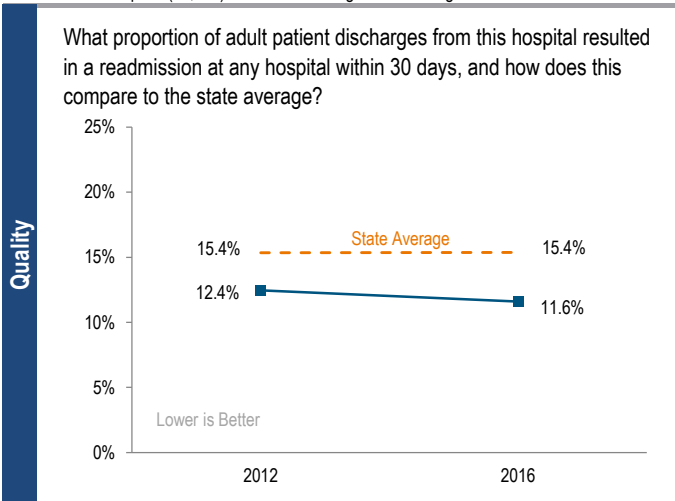
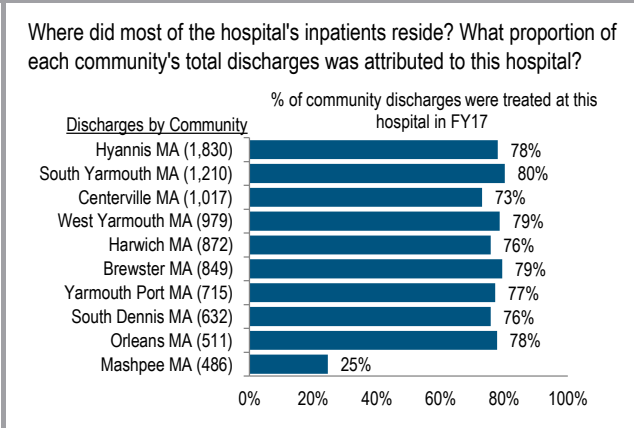
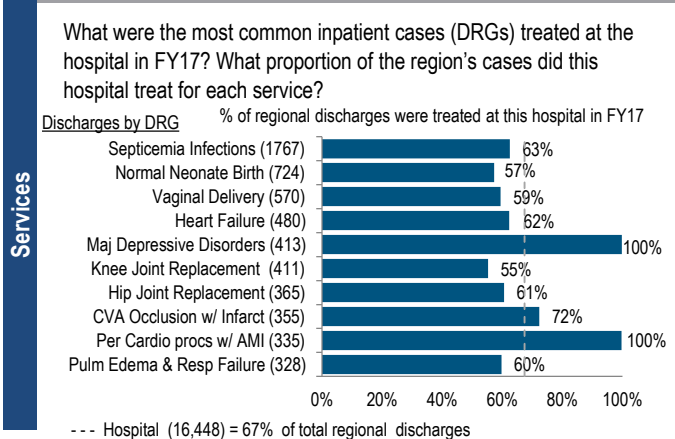


Cape Cod Hospital is a non-profit community-High Public Payer (HPP) hospital located in the Cape and Islands region. It is among the larger acute hospitals in Massachusetts and is a member of Cape Cod Healthcare. Cape Cod Hospital treated 67% of all discharges in the region. From FY13 to FY17, inpatient discharges at Cape Cod Hospital increased by 1.1%, equivalent to its cohort median. Outpatient visits increased by 1.1%, lower than the cohort median of 2.3%. The Hospital earned a profit each year from FY13 to FY17. It had a total margin of 8.7% in FY17, above the 3.8% median of its cohort hospitals.

At a Glance	<b>Overview / Size</b>	
	Hospital System Affiliation:	Cape Cod Healthcare
	Change in Ownership (FY13-17):	Not Applicable
	Total Staffed Beds:	269, among the larger acute hospitals
	% Occupancy:	71.0%, > cohort avg. (66%)
	Special Public Funding:	Not Applicable
	Trauma Center Designation:	Not Applicable
	Case Mix Index:	1.14, > cohort avg. (0.92); > statewide (1.12)
	<b>Financial</b>	
	Inpatient NPSR per CMAD:	\$12,037
Change FY16-FY17:	2.3%	
Inpatient:Outpatient Revenue in FY17:	34%:66%	
Outpatient Revenue in FY17:	\$314,344,615	
Change FY16-FY17:	3.9%	
Total Revenue in FY17:	\$546,087,613	
Total Surplus (Loss) in FY17:	\$47,372,601	
<b>Payer Mix</b>		
Public Payer Mix:	72.9% (HPP* Hospital)	
CY16 Commercial Statewide Relative Price:	1.29	
Top 3 Commercial Payers:	Blue Cross Blue Shield of Massachusetts Harvard Pilgrim Health Care Tufts Associated HMO, Inc.	
<b>Utilization</b>		
Inpatient Discharges in FY17:	16,448	
Change FY16-FY17:	4.4%	
Emergency Department Visits in FY17:	79,797	
Change FY16-FY17:	-5.5%	
Outpatient Visits in FY17:	150,008	
Change FY16-FY17:	-2.5%	
<b>Quality</b>		
Readmission Rate in FY16:	11.6%	
Change FY12-FY16 (percentage points):	-0.8	
Early Elective Deliveries Rate:	4.2%	



For descriptions of the metrics, please see the technical appendix.

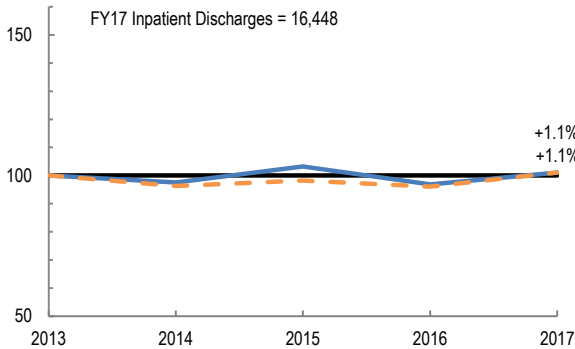
# 2017 HOSPITAL PROFILE: CAPE COD HOSPITAL

Cohort: Community High Public Payer Hospital

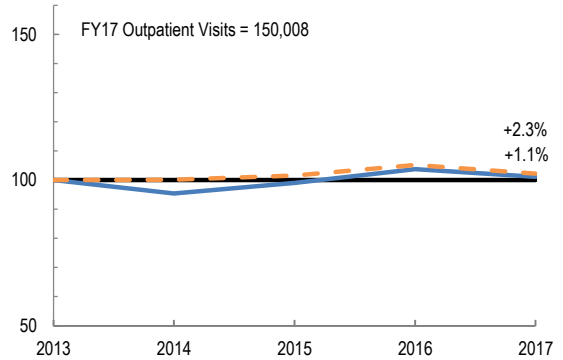


## Utilization

How has the volume of the hospital's inpatient discharges changed compared to FY13, and how does this compare to the hospital's peer cohort median? (FY13=100)

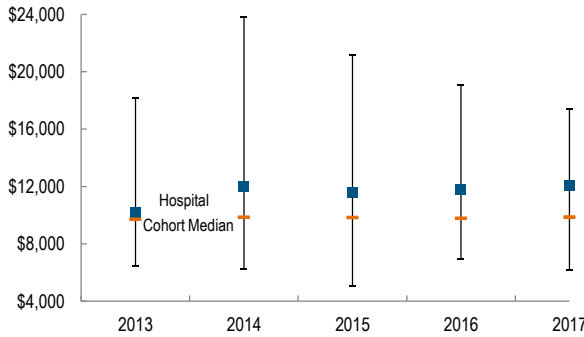


How has the volume of the hospital's outpatient visits changed compared to FY13, and how does this compare to the hospital's peer cohort median? (FY13=100)

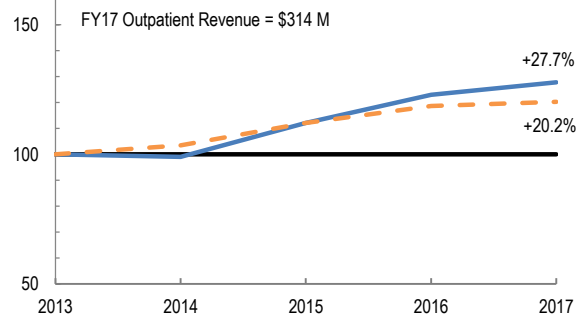


## Patient Revenue Trends

What was the hospital's net inpatient service revenue per case mix adjusted discharge between FY13 and FY17, and how does this compare to the hospital's peer cohort median?



How has the hospital's total outpatient revenue changed compared to FY13, and how does this compare to the hospital's peer cohort median? (FY13=100)



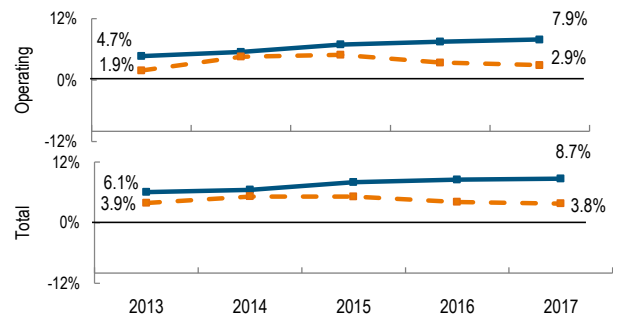
## Financial Performance

How have the hospital's total revenue and costs changed between FY13 and FY17?

### Revenue, Cost, & Profit/Loss (in millions)

FY	2013	2014	2015	2016	2017
<b>Operating Revenue</b>	\$ 416.5	\$ 449.1	\$ 473.9	\$ 513.5	\$ 541.8
<b>Non-Operating Revenue</b>	\$ 6.0	\$ 4.6	\$ 5.2	\$ 5.2	\$ 4.3
<b>Total Revenue</b>	\$ 422.5	\$ 453.7	\$ 479.1	\$ 518.7	\$ 546.1
<b>Total Costs</b>	\$ 396.8	\$ 424.2	\$ 440.7	\$ 474.5	\$ 498.7
<b>Total Profit (Loss)</b>	\$ 25.7	\$ 29.5	\$ 38.5	\$ 44.2	\$ 47.4

What were the hospital's total margin and operating margins between FY13 and FY17, and how do these compare to the hospital's peer cohort medians?



For descriptions of the metrics, please see the technical appendix.

\* High Public Payer Hospitals (HPP) receive a minimum of 63% of gross patient service revenue from public payers.