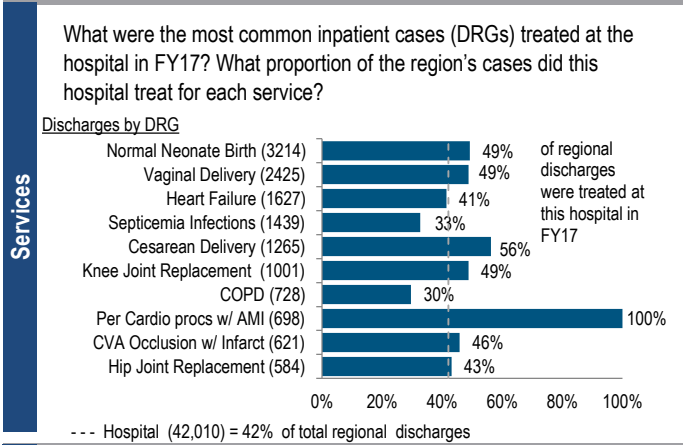


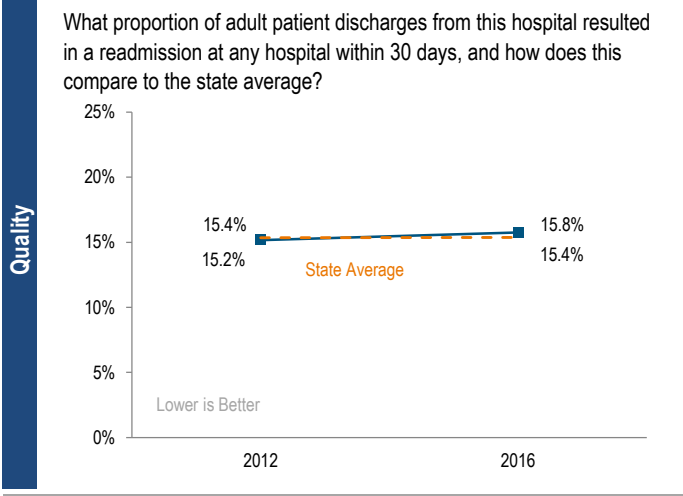
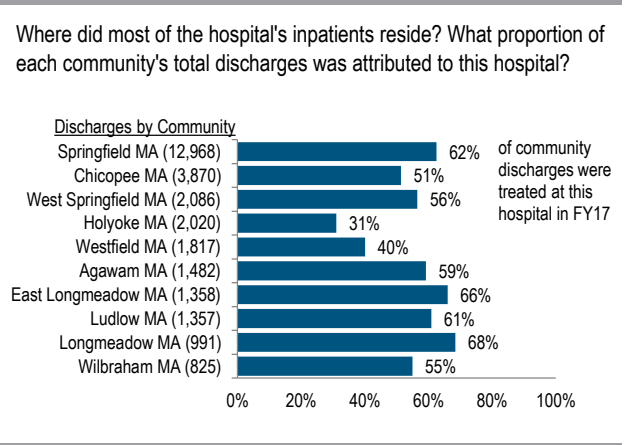
Baystate Medical Center is a non-profit teaching hospital located in the Western Massachusetts region. It is the third largest acute hospital in Massachusetts, with 777 staffed beds. It is a member of Baystate Health and qualifies as High Public Payer (HPP). It is the only Level 1 Trauma Center in its region, the only Level 2 Pediatric Trauma Center in its region, and one of nine organ transplant centers in Massachusetts. Baystate Medical Center was profitable each year from FY13 to FY17. In FY17 it had a total margin of 8.6%, above the 2.0% median of its cohort hospitals.

Overview / Size		Payer Mix	
Hospital System Affiliation:	Baystate Health	Public Payer Mix:	69.5% (HPP* Hospital)
Change in Ownership (FY13-17):	Not Applicable	CY16 Commercial Statewide Relative Price:	0.97
Total Staffed Beds:	777, 3rd largest acute hospital	Top 3 Commercial Payers:	Blue Cross Blue Shield of Massachusetts Health New England, Inc. Cigna Health and Life Ins. Co. (EAST)
% Occupancy:	72.0%, < cohort avg. (81%)	Utilization	
Special Public Funding:	CHART [^] , HCII [^] , ICB [^]	Inpatient Discharges in FY17:	42,010
Trauma Center Designation:	Adult: Level 1, Pedi: Level 2	Change FY16-FY17:	2.1%
Case Mix Index:	1.23, > cohort avg. (1.11); > statewide (1.12)	Emergency Department Visits in FY17:	153,158
		Change FY16-FY17:	2.6%
		Outpatient Visits in FY17:	436,700
		Change FY16-FY17:	-2.1%
		Quality	
		Readmission Rate in FY16:	15.8%
		Change FY12-FY16 (percentage points):	0.6
		Early Elective Deliveries Rate:	3.3%

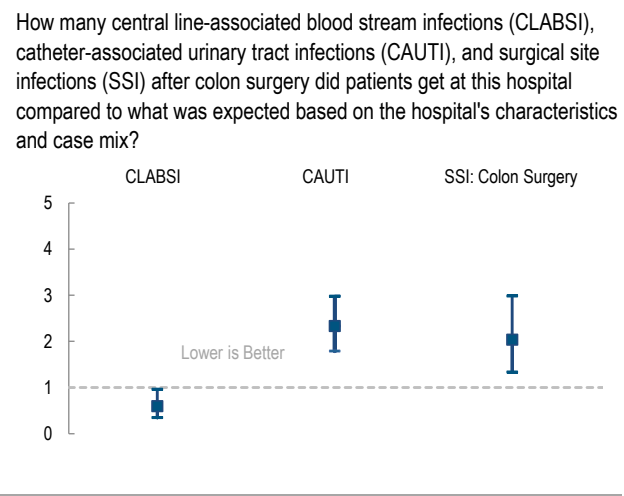
At a Glance



Services



Quality



For descriptions of the metrics, please see the technical appendix.

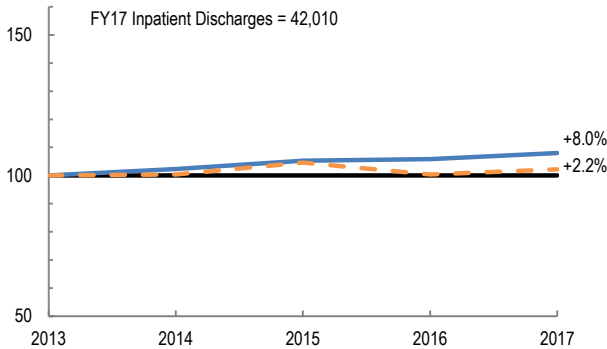
2017 HOSPITAL PROFILE: BAYSTATE MEDICAL CENTER

Cohort: Teaching Hospital

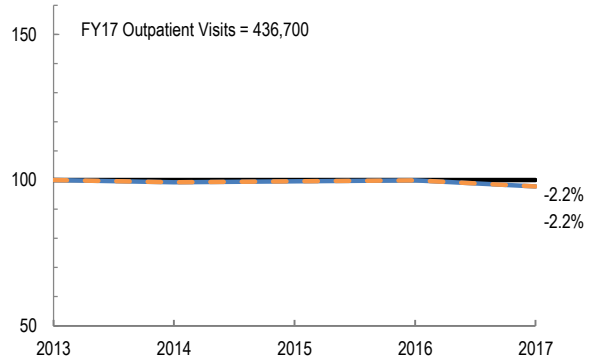


Utilization

How has the volume of the hospital's inpatient discharges changed compared to FY13, and how does this compare to the hospital's peer cohort median? (FY13=100)

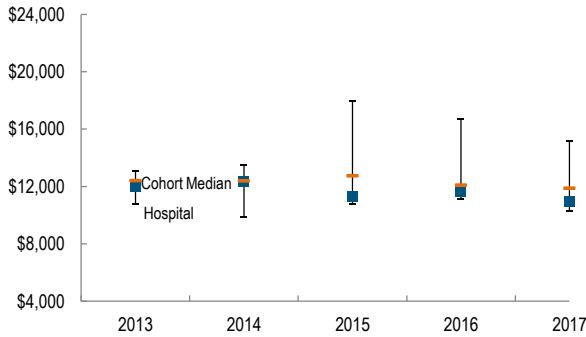


How has the volume of the hospital's outpatient visits changed compared to FY13, and how does this compare to the hospital's peer cohort median? (FY13=100)

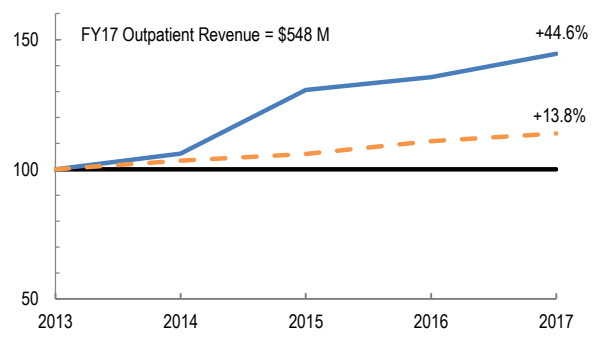


Patient Revenue Trends

What was the hospital's net inpatient service revenue per case mix adjusted discharge between FY13 and FY17, and how does this compare to the hospital's peer cohort median?



How has the hospital's total outpatient revenue changed compared to FY13, and how does this compare to the hospital's peer cohort median? (FY13=100)



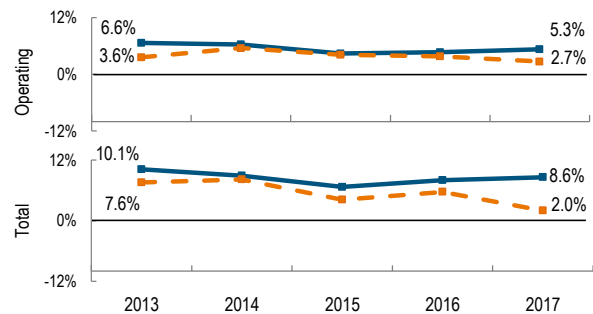
Financial Performance

How have the hospital's total revenue and costs changed between FY13 and FY17?

Revenue, Cost, & Profit/Loss (in millions)

FY	2013	2014	2015	2016	2017
Operating Revenue	\$ 996	\$ 1,053	\$ 1,127	\$ 1,178	\$ 1,227
Non-Operating Revenue	\$ 36	\$ 28	\$ 26	\$ 40	\$ 42
Total Revenue	\$ 1,032	\$ 1,081	\$ 1,153	\$ 1,218	\$ 1,269
Total Costs	\$ 927	\$ 984	\$ 1,076	\$ 1,121	\$ 1,160
Total Profit (Loss)	\$ 104.7	\$ 96.3	\$ 76.8	\$ 97.8	\$ 109.0

What were the hospital's total margin and operating margins between FY13 and FY17, and how do these compare to the hospital's peer cohort medians?



For descriptions of the metrics, please see the technical appendix.

* High Public Payer Hospitals (HPP) receive a minimum of 63% of gross patient service revenue from public payers.

η For more information on Health Care Innovation Investment Program (HCII) special funding, please contact the Health Policy Commission (HPC).

^ For more information on Community Hospital Acceleration, Revitalization and Transformation (CHART) special funding, please contact the Health Policy Commission (HPC).

° For more information on Infrastructure and Capacity Building (ICB) special funding, please contact the Massachusetts Executive Office of Health and Human Services (EOHHS).