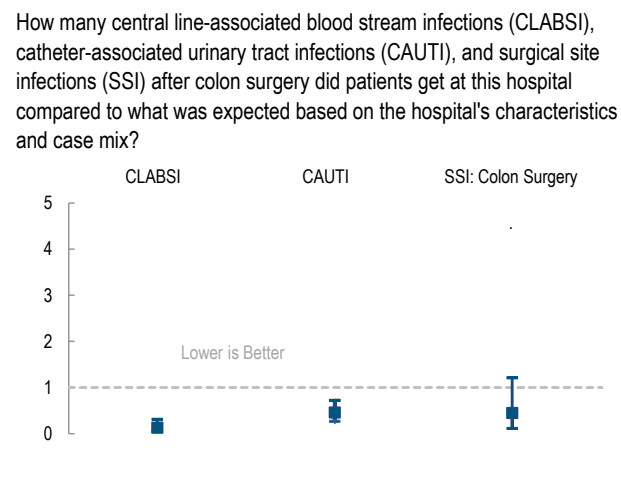
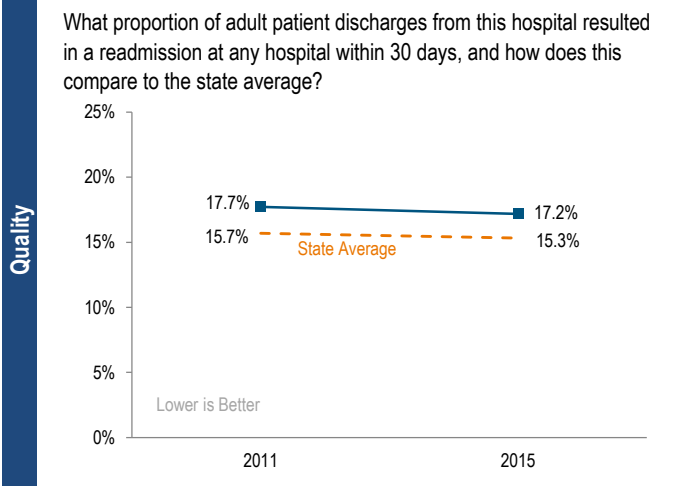
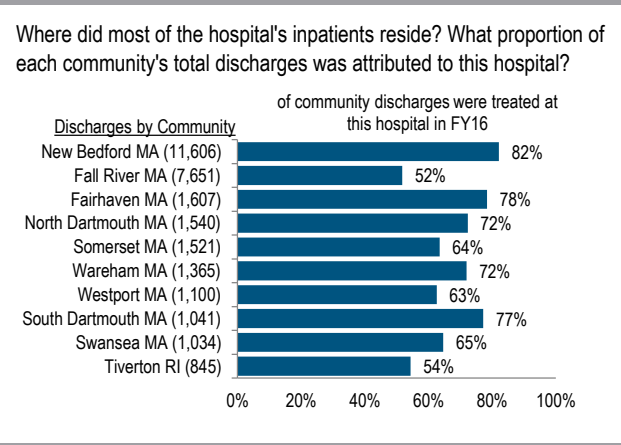
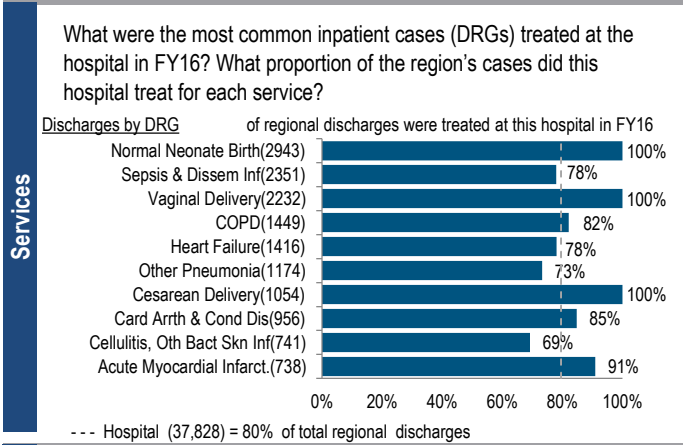


Southcoast Hospitals Group is a large, non-profit community-High Public Payer (HPP) hospital group located in the Southcoast region. Southcoast Hospitals Group has three campuses across Southeastern Massachusetts: Charlton Memorial Hospital, St. Luke's Hospital, and Tobey Hospital. Southcoast Hospitals Group formed an affiliation with Boston Children's Hospital starting in 2012. Inpatient discharges decreased by 10.5% from FY12 to FY16, compared to a median decrease of 2.8% among its peer cohort. Southcoast Hospitals Group was profitable each year from FY12 to FY16, with a total margin of 8.8% in FY16.

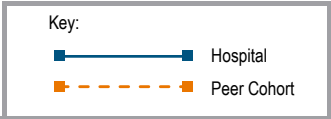
<b>At a Glance</b>	<b>Overview / Size</b>	
	Hospital System Affiliation:	Not Applicable
	Change in Ownership (FY12-16):	Not Applicable
	Total Staffed Beds:	485, 6th largest acute hospital
	% Occupancy:	89.3%, > cohort avg. (65%)
	Special Public Funding:	CHART^
	Trauma Center Designation:	Not Applicable
	Case Mix Index:	1.00, > cohort avg. (0.90); < statewide (1.07)
	<b>Financial</b>	
	Inpatient NPSR per CMAD:	\$9,771
Change FY15-FY16:	-5.9%	
Inpatient:Outpatient Revenue in FY16:	42%:58%	
Outpatient Revenue in FY16:	\$384,317,780	
Change FY15-FY16:	6.4%	
Total Revenue in FY16:	\$829,579,914	
Total Surplus (Loss) in FY16:	\$73,208,654	
<b>Payer Mix</b>		
Public Payer Mix:	74.0% (HPP* Hospital)	
CY15 Commercial S-RP:	0.91	
Top 3 Commercial Payers:	Blue Cross Blue Shield of MA Harvard Pilgrim Health Care Tufts Health Plan	
<b>Utilization</b>		
Inpatient Discharges in FY16:	37,828	
Change FY15-FY16:	-3.3%	
Emergency Department Visits in FY16:	165,086	
Change FY15-FY16:	3.4%	
Outpatient Visits in FY16:	903,378	
Change FY15-FY16:	2.8%	
<b>Quality</b>		
Readmission Rate in FY15:	17.2%	
Change FY11-FY15 (percentage points):	-0.6%	
Early Elective Deliveries Rate (Jan 2015-Jun 2016):	Not Available	



For descriptions of the metrics, please see the technical appendix.

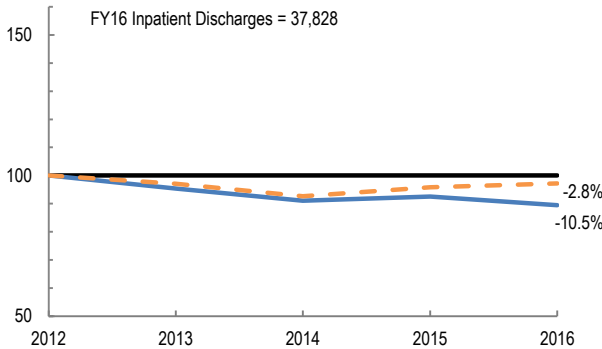
# 2016 HOSPITAL PROFILE: SOUTHCOAST HOSPITAL GROUP

Cohort: Community High Public Payer Hospital

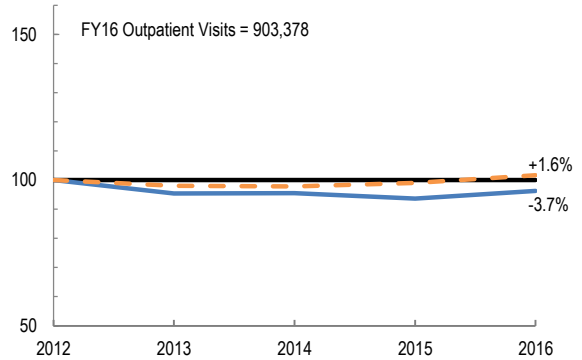


## Utilization

How has the volume of the hospital's inpatient discharges changed compared to FY12, and how does this compare to the hospital's peer cohort median? (FY12=100)

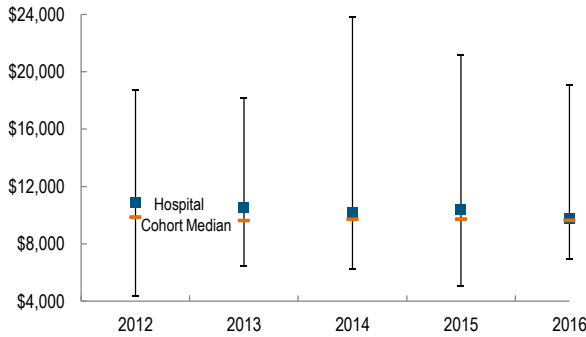


How has the volume of the hospital's outpatient visits changed compared to FY12, and how does this compare to the hospital's peer cohort median? (FY12=100)

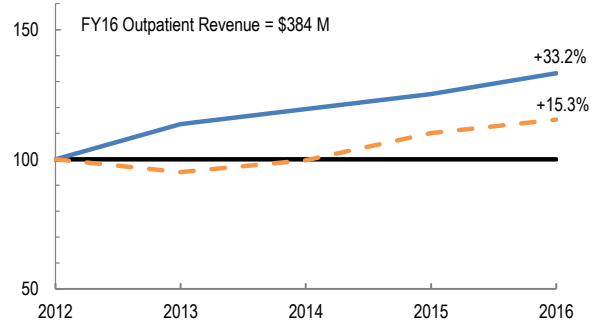


## Patient Revenue Trends

What was the hospital's net inpatient service revenue per case mix adjusted discharge between FY12 and FY16, and how does this compare to the hospital's peer cohort median?



How has the hospital's total outpatient revenue changed compared to FY12, and how does this compare to the hospital's peer cohort median? (FY12=100)



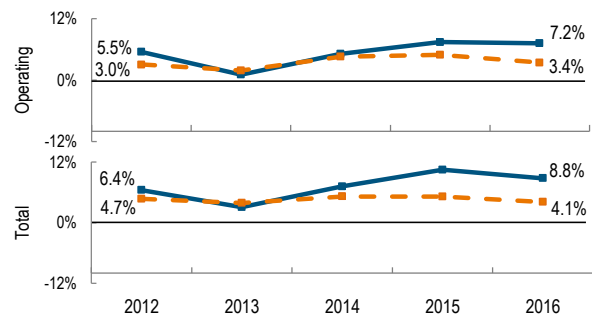
## Financial Performance

How have the hospital's total revenue and costs changed between FY12 and FY16?

### Revenue, Cost, & Profit/Loss (in millions)

FY	2012	2013	2014	2015	2016
Operating Revenue	\$ 703	\$ 712	\$ 730	\$ 807	\$ 816
Non-Operating Revenue	\$ 7	\$ 14	\$ 15	\$ 25	\$ 14
<b>Total Revenue</b>	<b>\$ 710</b>	<b>\$ 726</b>	<b>\$ 746</b>	<b>\$ 833</b>	<b>\$ 830</b>
Total Costs	\$ 664	\$ 704	\$ 692	\$ 746	\$ 756
<b>Total Profit (Loss)</b>	<b>\$ 45.7</b>	<b>\$ 22.4</b>	<b>\$ 53.6</b>	<b>\$ 87.2</b>	<b>\$ 73.2</b>

What were the hospital's total margin and operating margins between FY12 and FY16, and how do these compare to the hospital's peer cohort medians?



For descriptions of the metrics, please see the technical appendix.

\* High Public Payer Hospitals (HPP) receive a minimum of 63% of gross patient service revenue from public payers.

^ For more information on Community Hospital Acceleration, Revitalization and Transformation (CHART) special funding, please contact the Health Policy Commission (HPC).