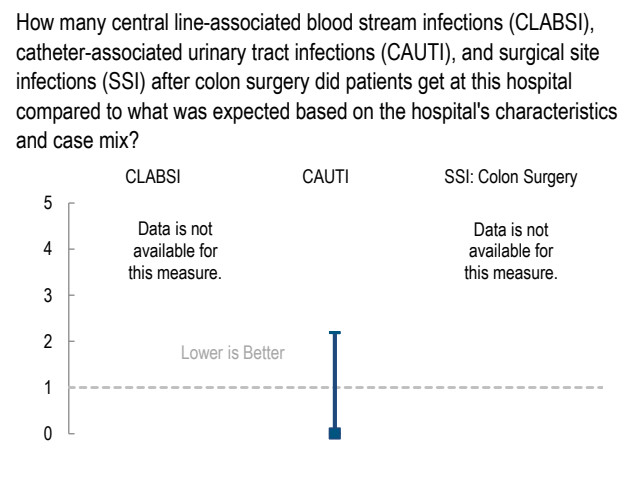
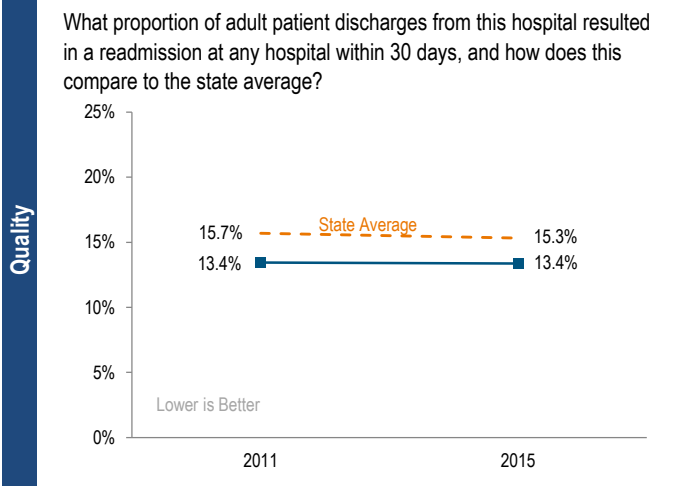
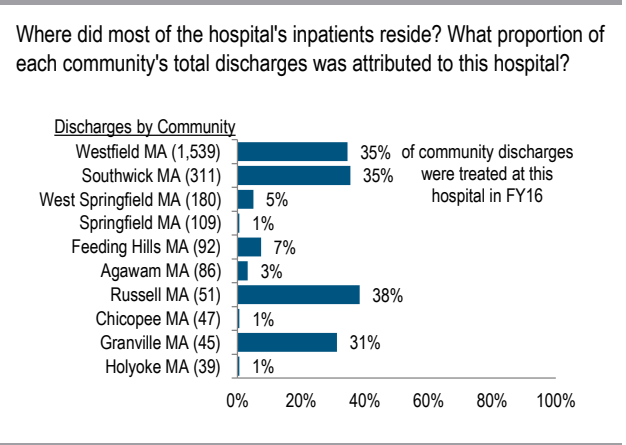
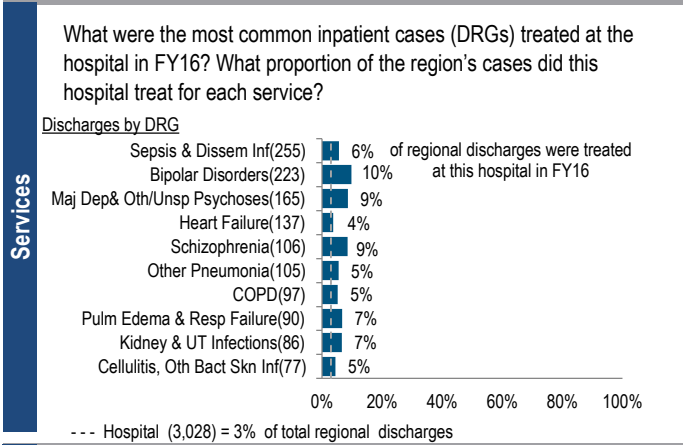


Baystate Noble Hospital is a non-profit community-High Public Payer (HPP) hospital located in the Western Massachusetts region. It is among the smaller acute hospitals in Massachusetts. It became affiliated with Baystate Health in 2015. Between FY12 and FY16, inpatient discharges at the hospital decreased 14.1% and outpatient visits decreased 6.8%. Both of these measures were lower than the medians of its peer cohort, which were -2.8% for inpatient discharges and 1.6% for outpatient visits. FY16 was the fifth consecutive fiscal year that Baystate Noble Hospital was profitable, and it had a total margin of 5.3%, higher than the 4.1% median for its peer cohort.

At a Glance	Overview / Size	
	Hospital System Affiliation:	Baystate Health System
	Change in Ownership (FY12-16):	Baystate Health - 2015
	Total Staffed Beds:	97, among the smaller acute hospitals
	% Occupancy:	46.0%, < cohort avg. (65%)
	Special Public Funding:	CHART^
	Trauma Center Designation:	Not Applicable
	Case Mix Index:	0.96, > cohort avg. (0.90); < statewide (1.07)
	Financial	
	Inpatient NPSR per CMAD:	\$8,901
Change FY15-FY16:	-5.0%	
Inpatient:Outpatient Revenue in FY16:	32%:68%	
Outpatient Revenue in FY16:	\$33,743,927	
Change FY15-FY16:	9.8%	
Total Revenue in FY16:	\$61,165,147	
Total Surplus (Loss) in FY16:	\$3,267,226	
Payer Mix		
Public Payer Mix:	67.5% (HPP* Hospital)	
CY15 Commercial S-RP:	0.68	
Top 3 Commercial Payers:	Blue Cross Blue Shield of MA Health New England Cigna - East	
Utilization		
Inpatient Discharges in FY16:	3,028	
Change FY15-FY16:	-0.2%	
Emergency Department Visits in FY16:	28,268	
Change FY15-FY16:	-0.3%	
Outpatient Visits in FY16:	43,061	
Change FY15-FY16:	5.0%	
Quality		
Readmission Rate in FY15:	13.4%	
Change FY11-FY15 (percentage points):	0.0%	
Early Elective Deliveries Rate (Jan 2015-Jun 2016):	Not Available	



For descriptions of the metrics, please see the technical appendix.

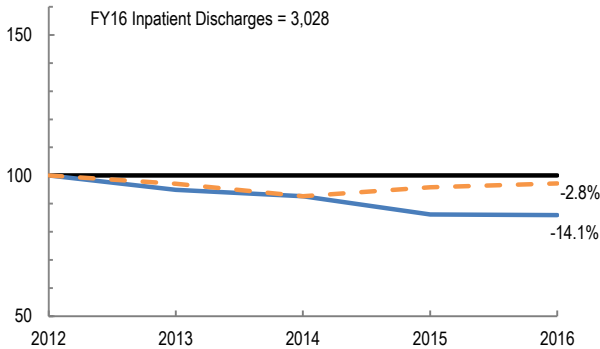
2016 HOSPITAL PROFILE: BAYSTATE NOBLE HOSPITAL

Cohort: Community High Public Payer Hospital

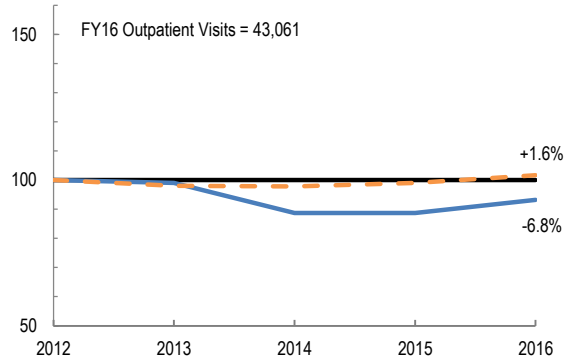


Utilization

How has the volume of the hospital's inpatient discharges changed compared to FY12, and how does this compare to the hospital's peer cohort median? (FY12=100)

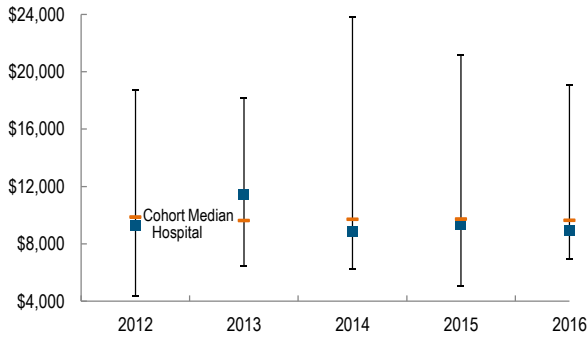


How has the volume of the hospital's outpatient visits changed compared to FY12, and how does this compare to the hospital's peer cohort median? (FY12=100)

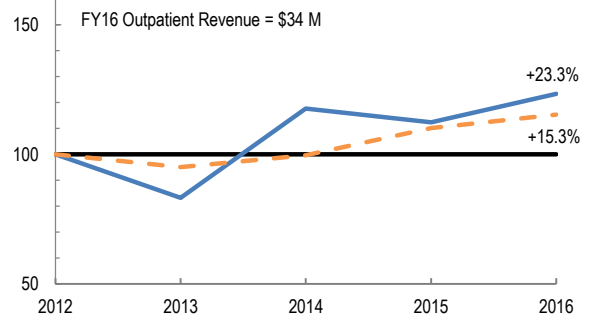


Patient Revenue Trends

What was the hospital's net inpatient service revenue per case mix adjusted discharge between FY12 and FY16, and how does this compare to the hospital's peer cohort median?



How has the hospital's total outpatient revenue changed compared to FY12, and how does this compare to the hospital's peer cohort median? (FY12=100)



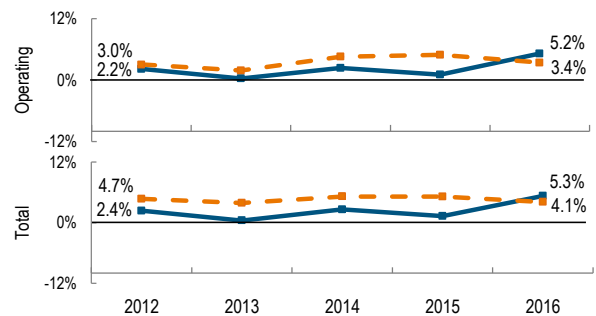
Financial Performance

How have the hospital's total revenue and costs changed between FY12 and FY16?

Revenue, Cost, & Profit/Loss (in millions)

FY	2012	2013	2014	2015	2016
Operating Revenue	\$ 58	\$ 55	\$ 57	\$ 59	\$ 61
Non-Operating Revenue	\$ 0	\$ 0	\$ 0	\$ 0	\$ 0
Total Revenue	\$ 59	\$ 55	\$ 57	\$ 59	\$ 61
Total Costs	\$ 57	\$ 55	\$ 56	\$ 58	\$ 58
Total Profit (Loss)	\$ 1.4	\$ 0.2	\$ 1.5	\$ 0.8	\$ 3.3

What were the hospital's total margin and operating margins between FY12 and FY16, and how do these compare to the hospital's peer cohort medians?



For descriptions of the metrics, please see the technical appendix.

* High Public Payer Hospitals (HPP) receive a minimum of 63% of gross patient service revenue from public payers.

^ For more information on Community Hospital Acceleration, Revitalization and Transformation (CHART) special funding, please contact the Health Policy Commission (HPC).