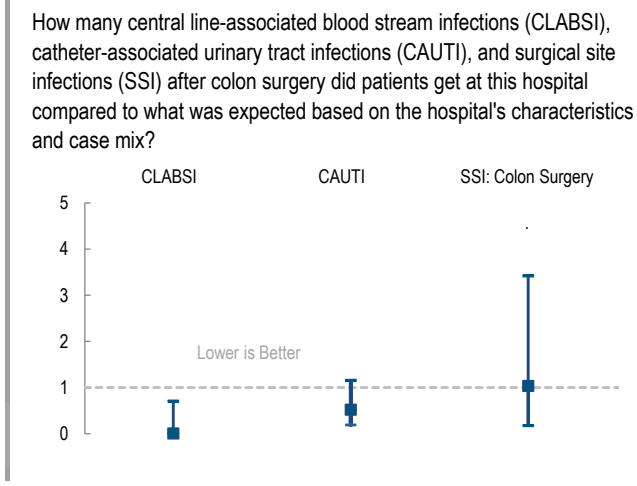
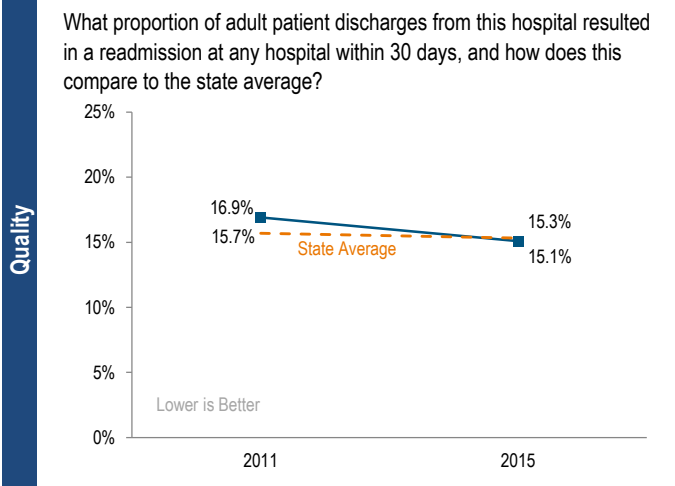
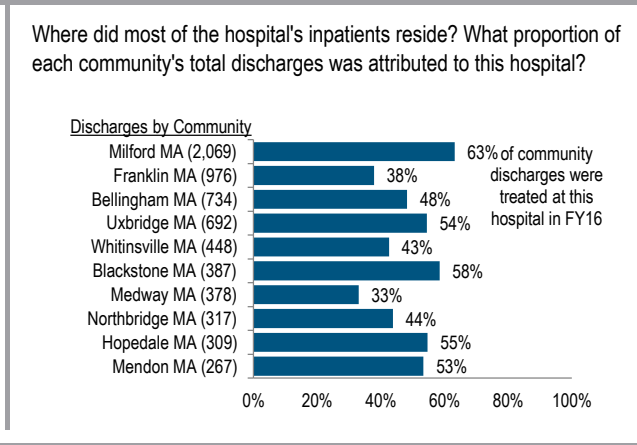
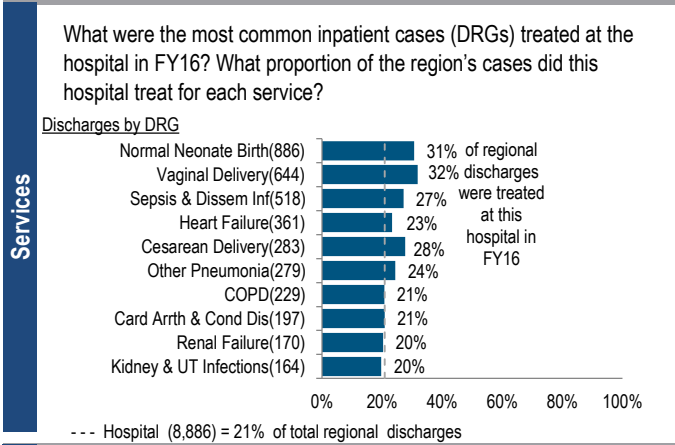


Milford Regional Medical Center is a mid-size, non-profit community hospital located in the Metro West region. Inpatient discharges decreased 0.3% at Milford Regional Hospital from FY12 to FY16, compared with a median decrease of 3.7% among its peer cohort hospitals. Outpatient visits decreased 29.1% at the hospital from FY12 to FY16, compared with a median increase of 4.3% at its peer cohort hospitals. Milford Regional Hospital earned a profit each year in the five-year period, with a total margin of 0.1% in FY16, compared to the 3.1% median of its peer cohort.

Overview / Size		Payer Mix	
Hospital System Affiliation:	Not Applicable	Public Payer Mix:	52.3% (Non-HPP* Hospital)
Change in Ownership (FY12-16):	Not Applicable	CY15 Commercial S-RP:	0.84
Total Staffed Beds:	160, mid-size acute hospital	Top 3 Commercial Payers:	Blue Cross Blue Shield of MA Harvard Pilgrim Health Care Tufts Health Plan
% Occupancy:	52.1%, < cohort avg. (61%)		
Special Public Funding:	CHART^		
Trauma Center Designation:	Not Applicable		
Case Mix Index:	0.87, > cohort avg. (0.84); < statewide (1.07)		
Financial		Utilization	
Inpatient NPSR per CMAD:	\$8,638	Inpatient Discharges in FY16:	8,886
Change FY15-FY16:	-3.0%	Change FY15-FY16:	2.2%
Inpatient:Outpatient Revenue in FY16:	25%:75%	Emergency Department Visits in FY16:	58,283
Outpatient Revenue in FY16:	\$128,845,549	Change FY15-FY16:	3.1%
Change FY15-FY16:	4.2%	Outpatient Visits in FY16:	120,708
Total Revenue in FY16:	\$206,952,673	Change FY15-FY16:	3.0%
Total Surplus (Loss) in FY16:	\$116,628		
		Quality	
		Readmission Rate in FY15:	15.1%
		Change FY11-FY15 (percentage points):	-1.8%
		Early Elective Deliveries Rate (Jan 2015-Jun 2016):	0.5%



For descriptions of the metrics, please see the technical appendix.

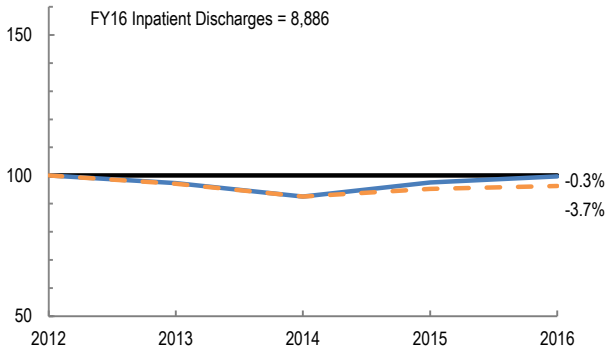
2016 HOSPITAL PROFILE: MILFORD REGIONAL MEDICAL CENTER

Cohort: Community Hospital

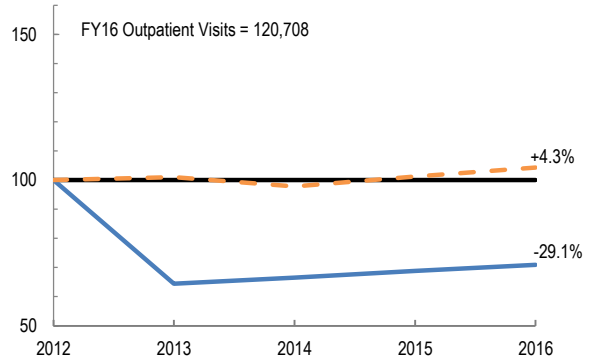


Utilization

How has the volume of the hospital's inpatient discharges changed compared to FY12, and how does this compare to the hospital's peer cohort median? (FY12=100)

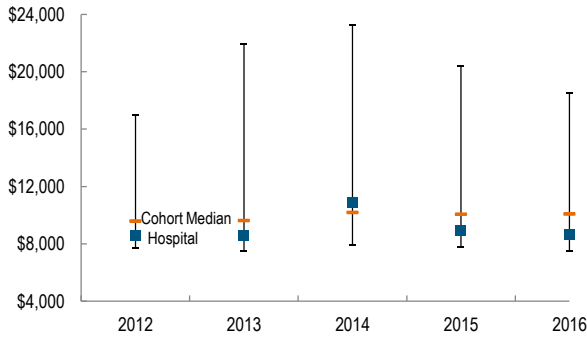


How has the volume of the hospital's outpatient visits changed compared to FY12, and how does this compare to the hospital's peer cohort median? (FY12=100)

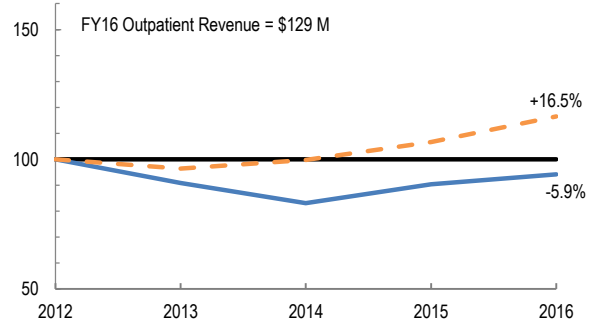


Patient Revenue Trends

What was the hospital's net inpatient service revenue per case mix adjusted discharge between FY12 and FY16, and how does this compare to the hospital's peer cohort median?



How has the hospital's total outpatient revenue changed compared to FY12, and how does this compare to the hospital's peer cohort median? (FY12=100)



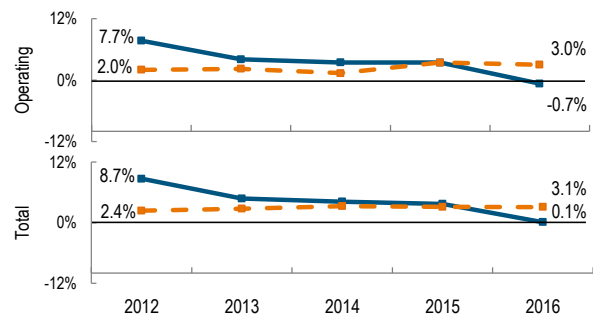
Financial Performance

How have the hospital's total revenue and costs changed between FY12 and FY16?

Revenue, Cost, & Profit/Loss (in millions)

FY	2012	2013	2014	2015	2016
Operating Revenue	\$ 196	\$ 183	\$ 188	\$ 199	\$ 205
Non-Operating Revenue	\$ 2	\$ 1	\$ 1	\$ 1	\$ 2
Total Revenue	\$ 198	\$ 185	\$ 189	\$ 199	\$ 207
Total Costs	\$ 181	\$ 176	\$ 181	\$ 192	\$ 207
Total Profit (Loss)	\$ 17.2	\$ 8.8	\$ 7.9	\$ 7.4	\$ 0.1

What were the hospital's total margin and operating margins between FY12 and FY16, and how do these compare to the hospital's peer cohort medians?



For descriptions of the metrics, please see the technical appendix.

* High Public Payer Hospitals (HPP) receive a minimum of 63% of gross patient service revenue from public payers.

^ For more information on Community Hospital Acceleration, Revitalization and Transformation (CHART) special funding, please contact the Health Policy Commission (HPC).