

HOLYOKE MEDICAL CENTER

2016 Hospital Profile

Holyoke, MA
Community High Public Payer Hospital
Western Massachusetts

Holyoke Medical Center is a mid-size, non-profit community-High Public Payer (HPP) hospital located in the Western Massachusetts region. Between FY12 and FY16, Holyoke Medical Center had a 3.7% increase in inpatient discharges, compared to a 2.8% median decrease for its peer cohort. Over this time period, its discharges have closely mirrored the peer cohort. Holyoke Medical Center has been profitable for each year in the five year period. In FY16, it had a total margin of 3.5%, lower than the cohort median of 4.1%. Over the five year period, Holyoke Medical Center has been close to the median of its peer cohort in both total margin and operating margin.

Overview / Size

Hospital System Affiliation:	Not Applicable
Change in Ownership (FY12-16):	Not Applicable
Total Staffed Beds:	107, mid-size acute hospital
% Occupancy:	65.8%, > cohort avg. (65%)
Special Public Funding:	CHART [^] , DSTI [†]
Trauma Center Designation:	Not Applicable
Case Mix Index:	0.85, < cohort avg. (0.90); < statewide (1.07)

Financial

Inpatient NPSR per CMAD:	\$8,570
Change FY15-FY16:	-4.4%
Inpatient:Outpatient Revenue in FY16:	25%:75%
Outpatient Revenue in FY16:	\$80,738,929
Change FY15-FY16:	16.1%
Total Revenue in FY16:	\$143,383,845
Total Surplus (Loss) in FY16:	\$5,018,290

Payer Mix

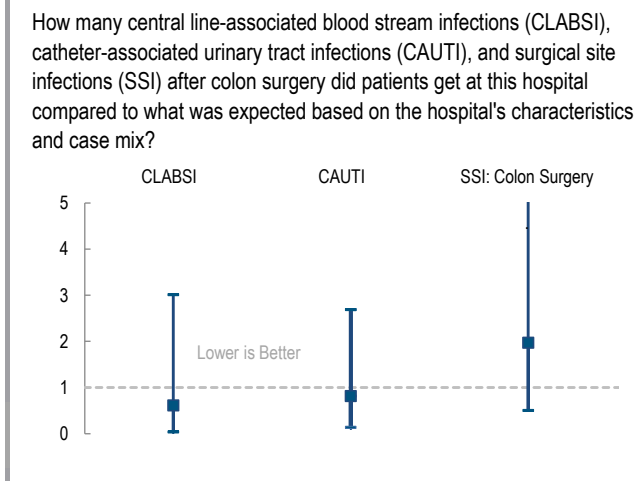
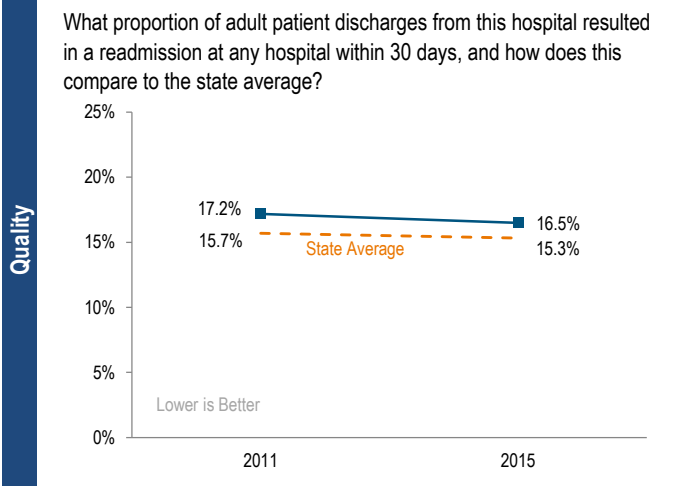
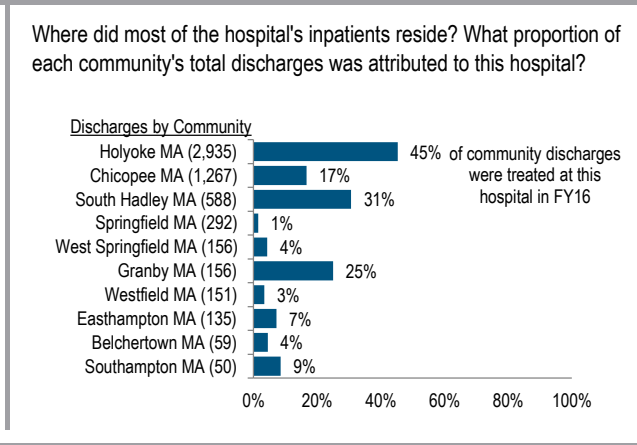
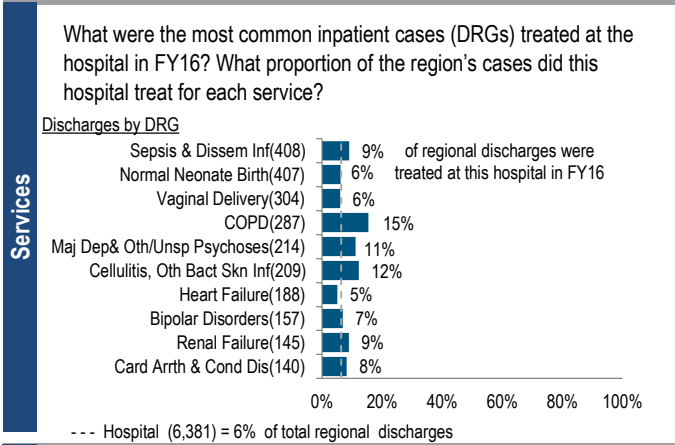
Public Payer Mix:	76.0% (HPP* Hospital)
CY15 Commercial S-RP:	0.72
Top 3 Commercial Payers:	Health New England Blue Cross Blue Shield of MA UniCare

Utilization

Inpatient Discharges in FY16:	6,381
Change FY15-FY16:	11.4%
Emergency Department Visits in FY16:	43,233
Change FY15-FY16:	4.3%
Outpatient Visits in FY16:	113,481
Change FY15-FY16:	18.8%

Quality

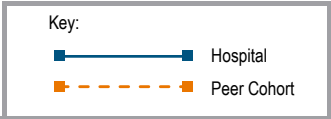
Readmission Rate in FY15:	16.5%
Change FY11-FY15 (percentage points):	-0.7%
Early Elective Deliveries Rate (Jan 2015-Jun 2016):	0.0%



For descriptions of the metrics, please see the technical appendix.

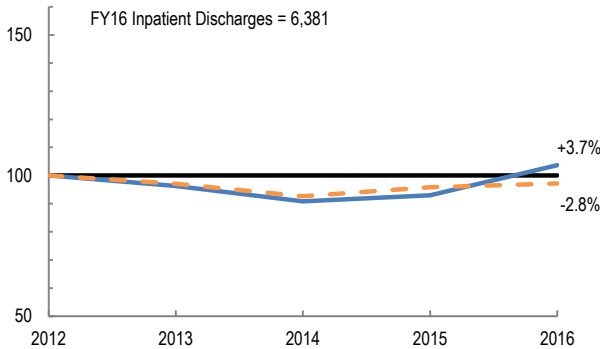
2016 HOSPITAL PROFILE: HOLYOKE MEDICAL CENTER

Cohort: Community High Public Payer Hospital

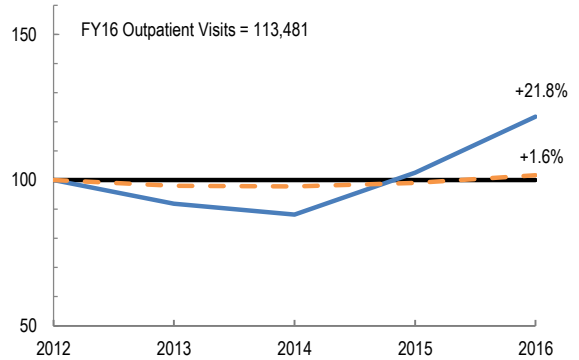


Utilization

How has the volume of the hospital's inpatient discharges changed compared to FY12, and how does this compare to the hospital's peer cohort median? (FY12=100)

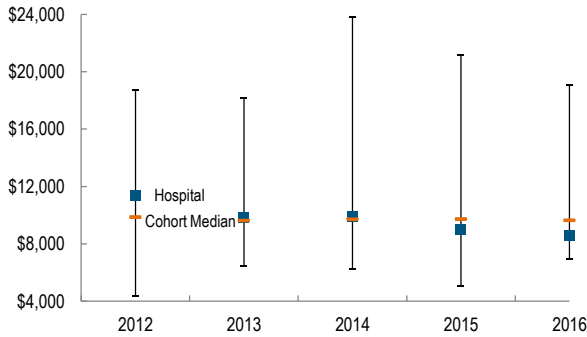


How has the volume of the hospital's outpatient visits changed compared to FY12, and how does this compare to the hospital's peer cohort median? (FY12=100)

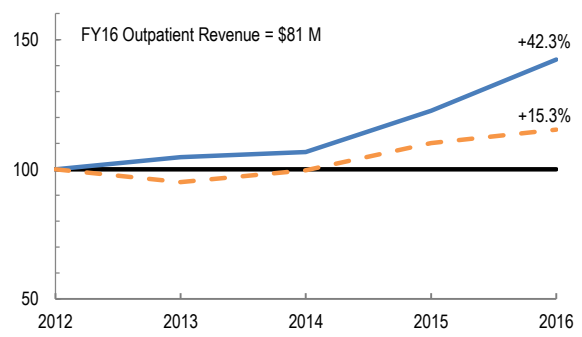


Patient Revenue Trends

What was the hospital's net inpatient service revenue per case mix adjusted discharge between FY12 and FY16, and how does this compare to the hospital's peer cohort median?



How has the hospital's total outpatient revenue changed compared to FY12, and how does this compare to the hospital's peer cohort median? (FY12=100)



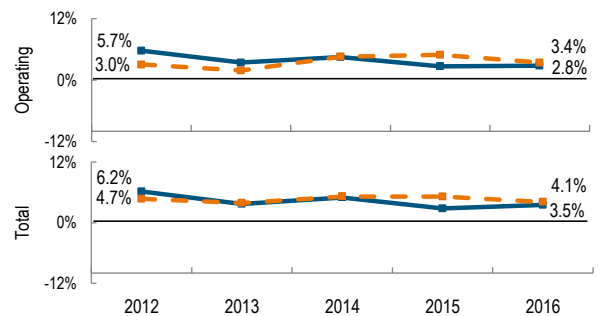
Financial Performance

How have the hospital's total revenue and costs changed between FY12 and FY16?

Revenue, Cost, & Profit/Loss (in millions)

FY	2012	2013	2014	2015	2016
Operating Revenue	\$ 129	\$ 121	\$ 123	\$ 127	\$ 142
Non-Operating Revenue	\$ 1	\$ 0	\$ 1	\$ 0	\$ 1
Total Revenue	\$ 130	\$ 122	\$ 123	\$ 127	\$ 143
Total Costs	\$ 122	\$ 117	\$ 117	\$ 124	\$ 138
Total Profit (Loss)	\$ 8.0	\$ 4.5	\$ 6.2	\$ 3.6	\$ 5.0

What were the hospital's total margin and operating margins between FY12 and FY16, and how do these compare to the hospital's peer cohort medians?



For descriptions of the metrics, please see the technical appendix.

* High Public Payer Hospitals (HPP) receive a minimum of 63% of gross patient service revenue from public payers.

^ For more information on Community Hospital Acceleration, Revitalization and Transformation (CHART) special funding, please contact the Health Policy Commission (HPC).

η For more information on Delivery System Transformation Initiative (DSTI) special funding, please contact the Massachusetts Executive Office of Health and Human Service (EOHHS).