

Baystate Franklin Medical Center is a mid-size, non-profit community-High Public Payer (HPP) hospital located in the Western Massachusetts region. It is a member of Baystate Health. Between FY12 and FY16, the volume of inpatient discharges at the hospital increased 16.5% compared to a median decrease of 2.8% at cohort hospitals. Outpatient visits decreased 10.1% for the hospital between FY12 and FY16, compared to a median increase of 1.6% for its peer cohort. Baystate Franklin Medical Center earned a profit of \$2.2M in FY16, a decrease from \$10.6M in FY15.

**Overview / Size**

Hospital System Affiliation:	Baystate Health System
Change in Ownership (FY12-16):	Not Applicable
Total Staffed Beds:	107, mid-size acute hospital
% Occupancy:	50.2%, < cohort avg. (65%)
Special Public Funding:	CHART^
Trauma Center Designation:	Not Applicable
Case Mix Index:	0.83, < cohort avg. (0.90); < statewide (1.07)

**Financial**

Inpatient NPSR per CMAD:	\$9,969
Change FY15-FY16:	5.4%
Inpatient:Outpatient Revenue in FY16:	29%:71%
Outpatient Revenue in FY16:	\$51,630,784
Change FY15-FY16:	-0.3%
Total Revenue in FY16:	\$98,571,000
Total Surplus (Loss) in FY16:	\$2,208,000

**Payer Mix**

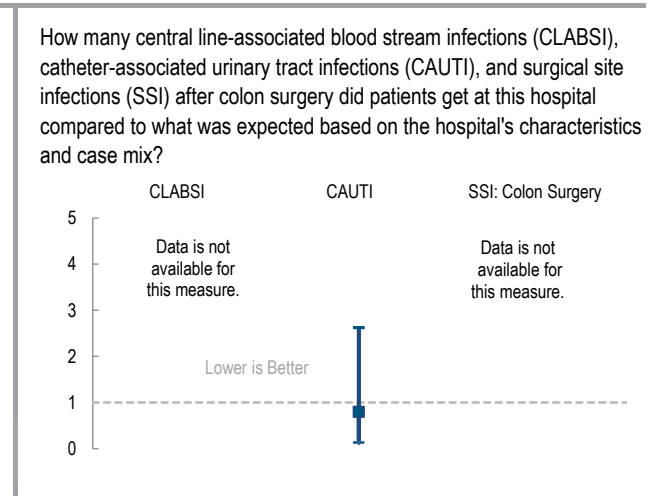
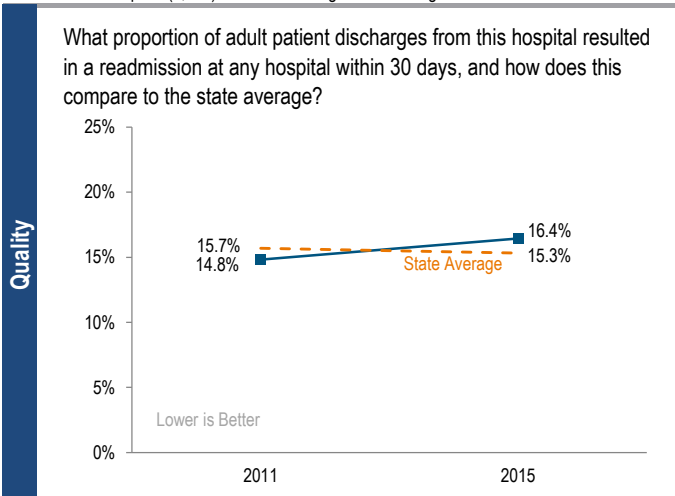
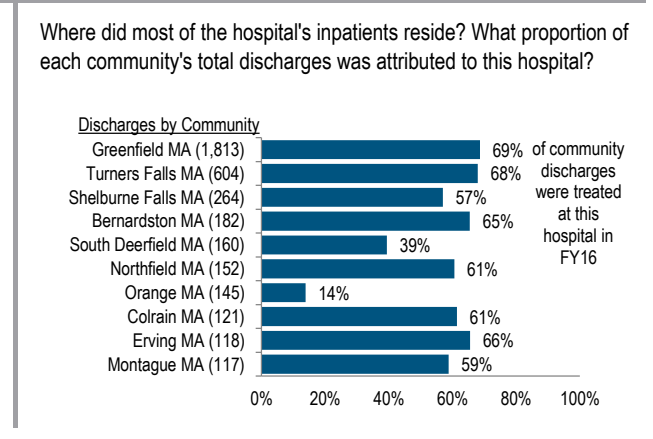
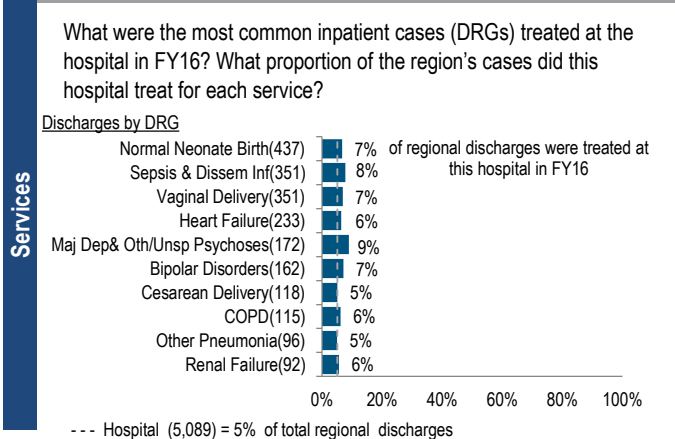
Public Payer Mix:	69.2% (HPP* Hospital)
CY15 Commercial S-RP:	0.98
Top 3 Commercial Payers:	Blue Cross Blue Shield of MA Health New England UniCare

**Utilization**

Inpatient Discharges in FY16:	5,089
Change FY15-FY16:	0.0%
Emergency Department Visits in FY16:	25,957
Change FY15-FY16:	-0.4%
Outpatient Visits in FY16:	48,467
Change FY15-FY16:	6.4%

**Quality**

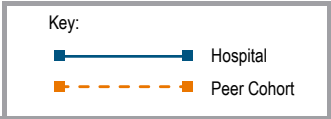
Readmission Rate in FY15:	16.4%
Change FY11-FY15 (percentage points):	1.6%
Early Elective Deliveries Rate (Jan 2015-Jun 2016):	3.8%



For descriptions of the metrics, please see the technical appendix.

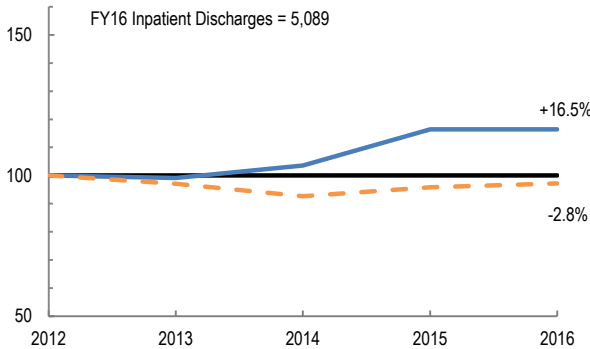
# 2016 HOSPITAL PROFILE: BAYSTATE FRANKLIN MEDICAL CENTER

Cohort: Community High Public Payer Hospital

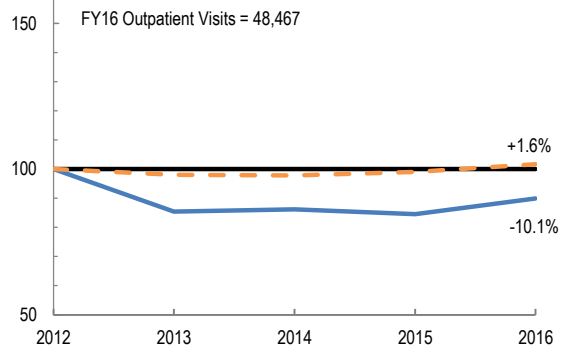


## Utilization

How has the volume of the hospital's inpatient discharges changed compared to FY12, and how does this compare to the hospital's peer cohort median? (FY12=100)

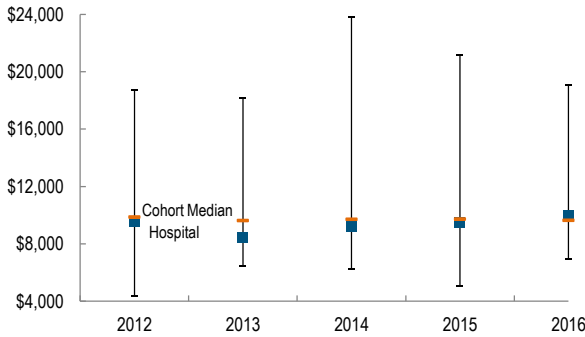


How has the volume of the hospital's outpatient visits changed compared to FY12, and how does this compare to the hospital's peer cohort median? (FY12=100)

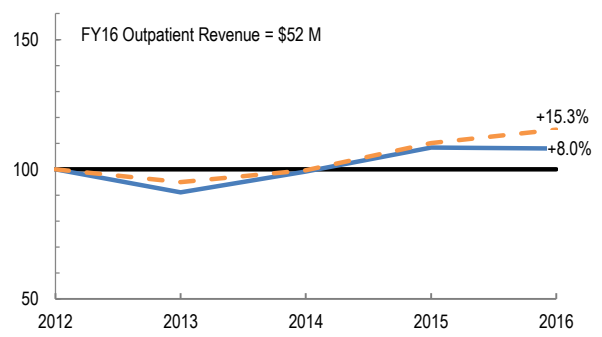


## Patient Revenue Trends

What was the hospital's net inpatient service revenue per case mix adjusted discharge between FY12 and FY16, and how does this compare to the hospital's peer cohort median?



How has the hospital's total outpatient revenue changed compared to FY12, and how does this compare to the hospital's peer cohort median? (FY12=100)



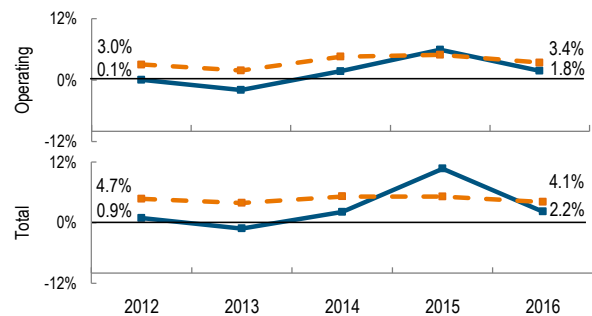
## Financial Performance

How have the hospital's total revenue and costs changed between FY12 and FY16?

### Revenue, Cost, & Profit/Loss (in millions)

FY	2012	2013	2014	2015	2016
<b>Operating Revenue</b>	\$ 82	\$ 78	\$ 83	\$ 95	\$ 98
<b>Non-Operating Revenue</b>	\$ 1	\$ 1	\$ 0	\$ 5	\$ 0
<b>Total Revenue</b>	\$ 82	\$ 78	\$ 84	\$ 99	\$ 99
<b>Total Costs</b>	\$ 81	\$ 79	\$ 82	\$ 89	\$ 96
<b>Total Profit (Loss)</b>	\$ 0.8	\$ (0.9)	\$ 1.8	\$ 10.6	\$ 2.2

What were the hospital's total margin and operating margins between FY12 and FY16, and how do these compare to the hospital's peer cohort medians?



For descriptions of the metrics, please see the technical appendix.

\* High Public Payer Hospitals (HPP) receive a minimum of 63% of gross patient service revenue from public payers.

^ For more information on Community Hospital Acceleration, Revitalization and Transformation (CHART) special funding, please contact the Health Policy Commission (HPC).