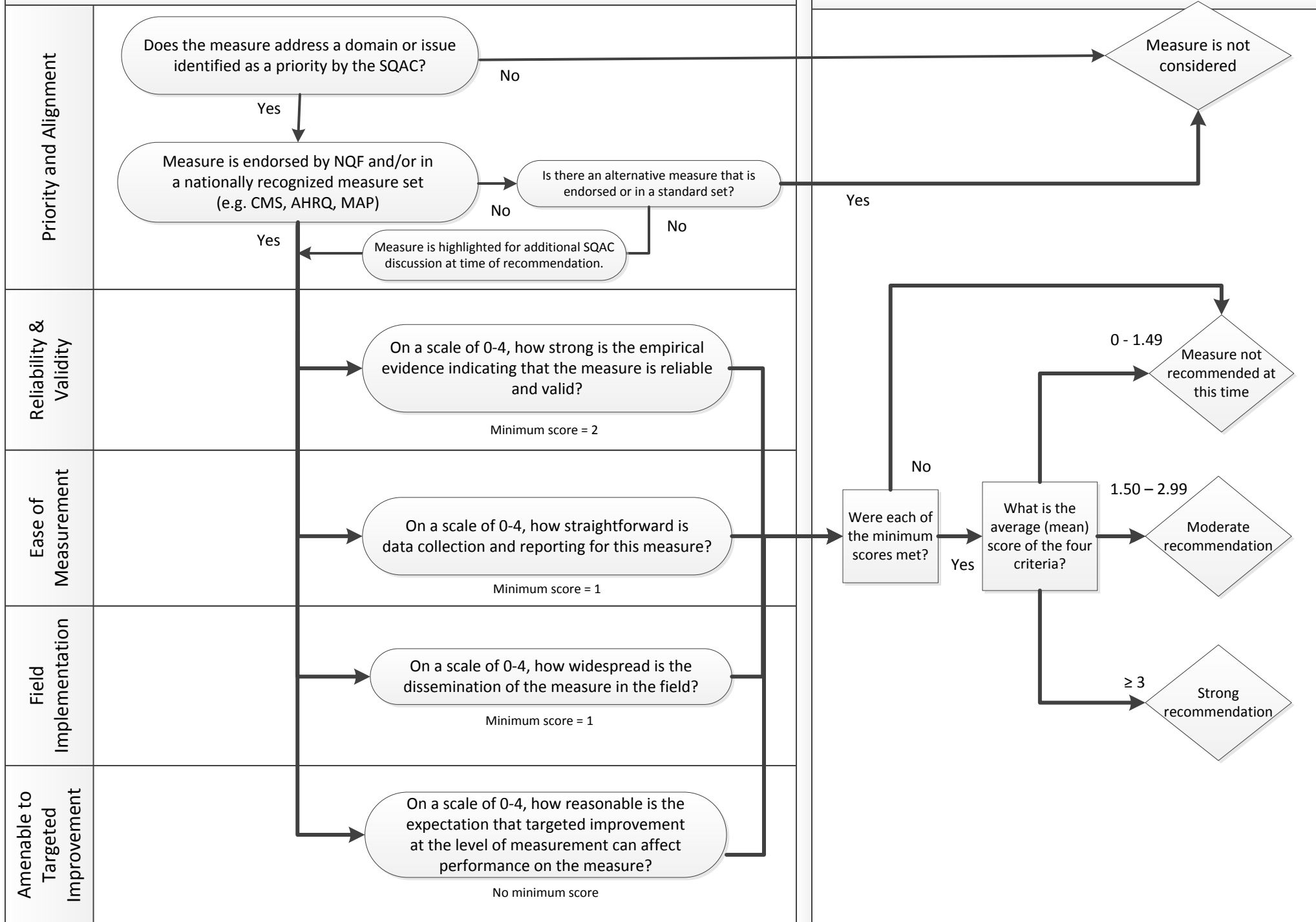


SQAC Non-Mandated Measure Evaluation Process

Scoring



SQAC Non-Mandated Measure Evaluation Process – Scoring Key

9/23/2013

	0	1	2	3	4
Reliability and Validity	<p>The evidence of the measure’s reliability and validity is inconclusive and/or unclear.</p> <p>Reliability: the measure can be implemented consistently, allows comparability, and produces results that can be repeated in the same population and time period, or</p> <p>Validity: the measure’s specifications are consistent with evidence for the measure.</p>	<p>There is evidence that the measure meets each of the elements of reliability and validity, but not at the proposed level of analysis.</p>	<p>There is mixed evidence that the measure meets each of the elements of reliability and validity at the proposed level of analysis.</p>	<p>There is good evidence that the measure meets each of the elements of reliability and validity at the proposed level of analysis.</p>	<p>There is very strong evidence that the measure meets each of the elements of reliability and validity at the proposed level of analysis.</p>
Ease of Measurement	<p>No collection and reporting, or extreme resource cost to collect necessary data elements.</p> <p>Example of extreme resource cost: face-to-face interview</p>	<p>Some collection but no reporting, or high resource cost to collect necessary data elements.</p> <p>Example of high resource cost: chart review</p>	<p>Some collection and reporting, or moderate resource cost to collect necessary data elements.</p> <p>Example of moderate resource cost: EHR extraction</p>	<p>Commonly collected and reported, or low resource cost to collect necessary elements.</p> <p>Example of low cost: data currently reported to some entities</p>	<p>Data are available and already in use for public reporting, performance programs or accountability purposes.</p>
Field Implementation	<p>The measure has not been implemented in the field (i.e. provider practice, hospital, or plan).</p>	<p>The measure has been implemented in the field, but evaluation results are unavailable or inconsistent.</p>	<p>The measure has been implemented in the field, and evaluated positively, but not at the indicated level of analysis.</p>	<p>The measure has been implemented in the field, and evaluated positively.</p>	<p>The measure has been applied to the indicated level of analysis and used for publicly reporting, performance programs and for accountability purposes.</p>
Amenable to Targeted Improvement	<p>There are no evaluated interventions that can drive performance in the clinically related area and that are applicable to the level of analysis.</p>	<p>There are minimally-evaluated interventions that may drive performance in the clinically related area AND weak evidence that the measure is amendable to intervention at the level of analysis.</p>	<p>The interventions that demonstrate an impact on patient outcomes in the clinically related area have not demonstrated direct correlation with performance on the measure.</p>	<p>There are interventions that demonstrate an impact on performance in the clinically related area, but some have not been evaluated at the indicated level of analysis.</p>	<p>There is strong evidence that targeted interventions at the level of analysis can drive performance in the clinically related area.</p>