



Commonwealth
of Massachusetts

Center for Health
Information and Analysis

Áron Boros
Executive Director

Annual Report on the Massachusetts Health Care Market

Data Appendix

August 2013

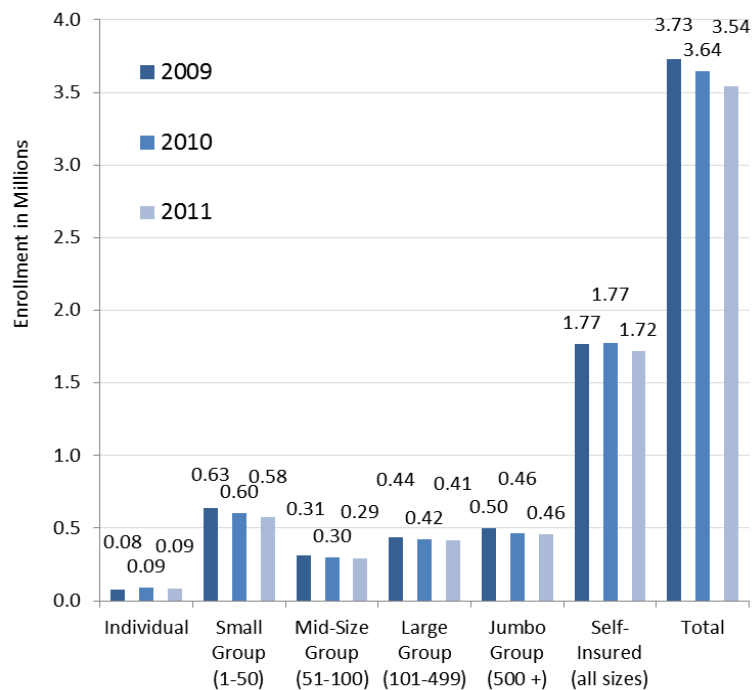
Center for Health Information
and Analysis

DATA APPENDIX

Contents

Figure DA 1: Commercial Enrollment by Market Group (2009-2011)	2
Figure DA 2: Total Premiums by Payer (2009-2011).....	2
Figure DA 3: Premiums PMPM by Payer (2009-2011)	3
Figure DA 4: Average Group Size by Market Sector (2009-2011)	3
Figure DA 5: Total Premiums by Market Sector (2009-2011).....	4
Figure DA 6: Premiums PMPM by Market Sector (2009-2011)	4
Figure DA 7: Unadjusted & Adjusted Premiums PMPM by Market Sector (2009-2011)	5
Figure DA 8: Distribution of Enrollment by Quoted Rate Increase	6
Figure DA 9: Benefit Buy-Down in the Massachusetts Commercial Market.....	6
Figure DA 10: Small Group Market Enrollee Distribution by Actuarial Value	7
Figure DA 11: Total and PMPM Medical Spending (2010-2011).....	8
Figure DA 12: Massachusetts Payer Retention (2009-2011)	8
Figure DA 13: Hospital Compare Tables.....	9
Figure DA 14: HCAHPS Tables	12
Figure DA 15: AHRQ Tables.....	15

FIGURE DA 1: COMMERCIAL ENROLLMENT BY MARKET GROUP (2009-2011)



Source: Oliver Wyman analysis of data from Massachusetts carriers for resident and non-resident insured and self-insured lives.

FIGURE DA 2: TOTAL PREMIUMS BY PAYER (2009-2011)

Insurers	Premiums'			Change	
	2009	2010	2011	2009-2010	2010 - 2011
BCBS of MA"	\$5,010,682,785	\$4,593,442,593	\$4,600,777,679	-8.3%	0.2%
Fallon Community Health Plan"	\$551,880,922	\$564,763,111	\$520,133,687	2.3%	-7.9%
Harvard Pilgrim Health Care"	\$1,728,984,945	\$1,923,938,019	\$2,035,698,632	11.3%	5.8%
Health New England Inc.	\$304,149,652	\$342,144,780	\$369,593,244	12.5%	8.0%
Neighborhood Health Plan Inc.	\$133,145,253	\$168,145,820	\$228,092,911	26.3%	35.7%
Tufts Health Plan"	\$1,321,231,184	\$1,399,707,997	\$1,457,053,054	5.9%	4.1%
Total	\$9,050,074,740	\$8,992,142,319	\$9,211,349,206	-0.6%	2.4%

' Premiums are after rebates to consumers related to minimum loss ratio (MLR) requirements

" Consolidated

Source: Oliver Wyman analysis of data from Massachusetts carriers for resident and non-resident insured lives

FIGURE DA 3: PREMIUMS PMPM BY PAYER (2009-2011)

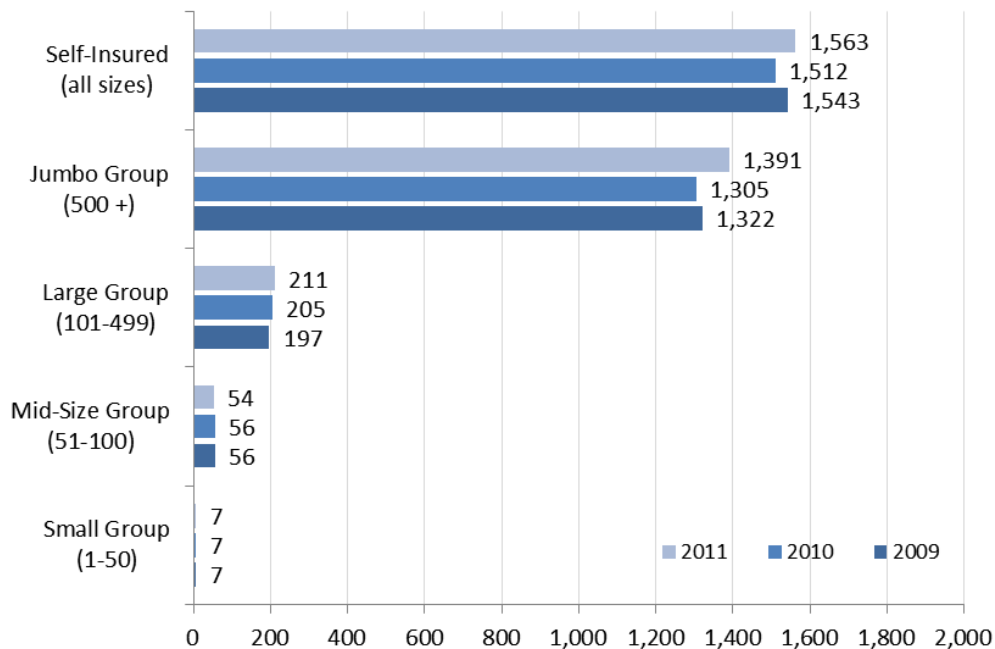
Insurers	Premiums PMPM ¹			Change	
	2009	2010	2011	2009 - 2010	2010 - 2011
BCBS of MA ²	\$383	\$400	\$422	4.6%	5.5%
Fallon Community Health Plan ²	\$357	\$380	\$393	6.3%	3.3%
Harvard Pilgrim Health Care ²	\$407	\$414	\$436	1.8%	5.2%
Health New England Inc.	\$357	\$367	\$382	2.9%	4.0%
Neighborhood Health Plan Inc.	\$386	\$385	\$385	-0.3%	-0.1%
Tufts Health Plan ²	\$379	\$401	\$426	5.8%	6.2%
Overall	\$384	\$400	\$421	4.3%	5.2%

¹ Premiums are after rebates to consumers related to minimum loss ratio (MLR) requirements; member months exclude managed, self-funded employer groups

² Consolidated

Source: Oliver Wyman analysis of data from Massachusetts carriers for resident and non-resident insured lives

FIGURE DA 4: AVERAGE GROUP SIZE BY MARKET SECTOR (2009-2011)



Source: Oliver Wyman analysis of data from Massachusetts carriers for resident and non-resident insured lives.

Note: Average group size is based on the number of enrolled subscribers (employees) per employer group.

FIGURE DA 5: TOTAL PREMIUMS BY MARKET SECTOR (2009-2011)

Market Sectors	Total Premiums (in millions)'			Change	
	2009	2010	2011	2009-2010	2010 - 2011
Individual	\$355.5	\$418.1	\$450.9	17.6%	7.8%
Small Group (1-50)	\$2,848.0	\$2,804.5	\$2,845.6	-1.5%	1.5%
Mid-size Group (51-100)	\$1,395.9	\$1,412.1	\$1,450.9	1.2%	2.7%
Large Group (101-499)	\$2,024.8	\$2,020.2	\$2,095.0	-0.2%	3.7%
Jumbo Group (500+)	\$2,425.9	\$2,337.2	\$2,368.9	-3.7%	1.4%
Total	\$9,050.1	\$8,992.1	\$9,211.3	-0.6%	2.4%

' Premiums post-MLR rebates; member months exclude self-funded employer groups

Source: Oliver Wyman analysis of data from Massachusetts payers for resident and non-resident insured lives

FIGURE DA 6: PREMIUMS PMPM BY MARKET SECTOR (2009-2011)

Market Sectors	Premiums PMPM'			Change	
	2009	2010	2011	2009-2010	2010 - 2011
Individual	\$371	\$400	\$433	7.7%	8.4%
Small Group (1-50)	\$374	\$389	\$410	4.0%	5.5%
Mid-size Group (51-100)	\$370	\$393	\$418	6.0%	6.3%
Large Group (101-499)	\$384	\$401	\$423	4.4%	5.5%
Jumbo Group (500+)	\$407	\$420	\$434	3.1%	3.4%
Total	\$384	\$400	\$421	4.3%	5.2%

' Premiums post-MLR rebates; member months exclude self-funded employer groups

Source: Oliver Wyman analysis of data from Massachusetts payers for resident and non-resident insured lives

FIGURE DA 7: UNADJUSTED & ADJUSTED PREMIUMS PMPM BY MARKET SECTOR (2009-2011)

Unadjusted Premiums PMPM (Pre-MLR Rebates)					
	Premiums PMPM			Change	
	2009	2010	2011	2009-2010	2010-2011
Small Group (1-50)	\$374	\$389	\$417	4.0%	7.4%
Mid-Size Group (51-100)	\$370	\$393	\$418	6.0%	6.3%
Large Group (101-499)	\$384	\$401	\$423	4.4%	5.5%
Jumbo Group (500 +)	\$407	\$420	\$434	3.1%	3.4%
<i>Variation**</i>	10%	8%	4%		
Total Market	\$384	\$400	\$424	4.3%	5.9%
Adjusted* Premiums PMPM (Pre-MLR Rebates)					
	Premiums PMPM			Change	
	2009	2010	2011	2009-2010	2010-2011
Small Group (1-50)	\$501	\$544	\$600	8.7%	10.3%
Mid-Size Group (51-100)	\$485	\$524	\$564	8.0%	7.6%
Large Group (101-499)	\$506	\$540	\$569	6.7%	5.4%
Jumbo Group (500 +)	\$492	\$520	\$542	5.7%	4.3%
<i>Variation**</i>	4%	5%	10%		
Total Market	\$495	\$531	\$569	7.3%	7.1%

* Adjusted for age, gender, geographic area, benefits, and group size

** Variation is used here as the range divided by the average

Notes: Trend rates calculated from un-rounded PMPM amounts (not shown); premiums are pre-MLR rebates

Source: Oliver Wyman analysis of data from Massachusetts payers for resident and non-resident insured lives.

FIGURE DA 8: DISTRIBUTION OF ENROLLMENT BY QUOTED RATE INCREASE

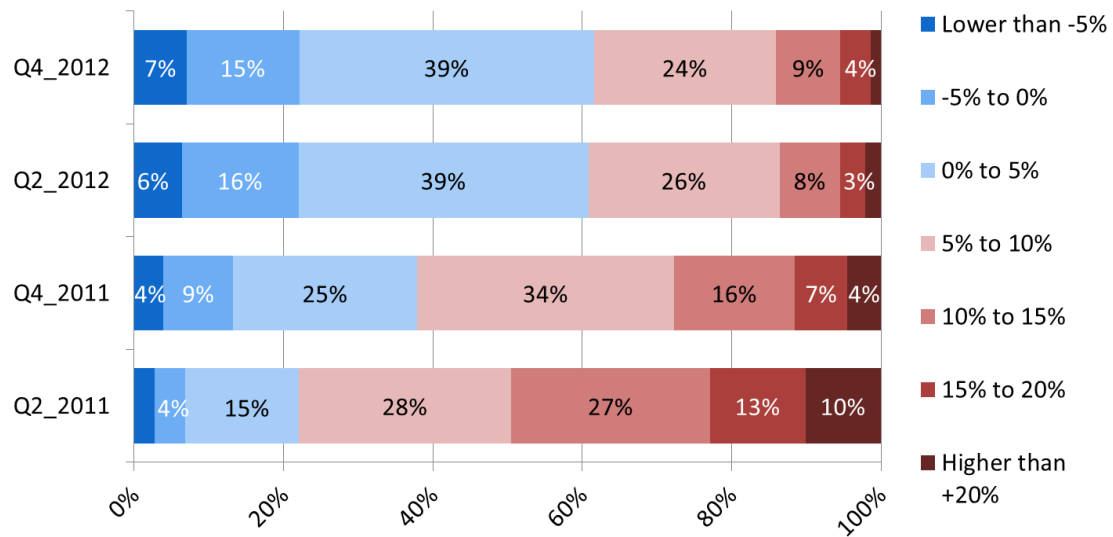
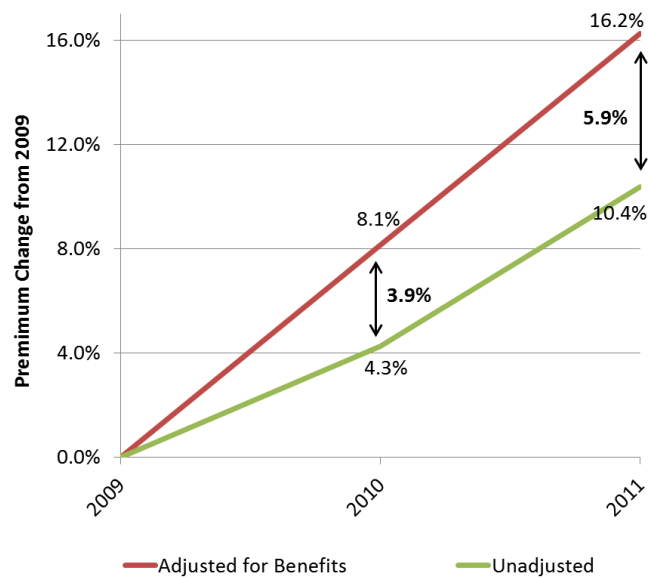
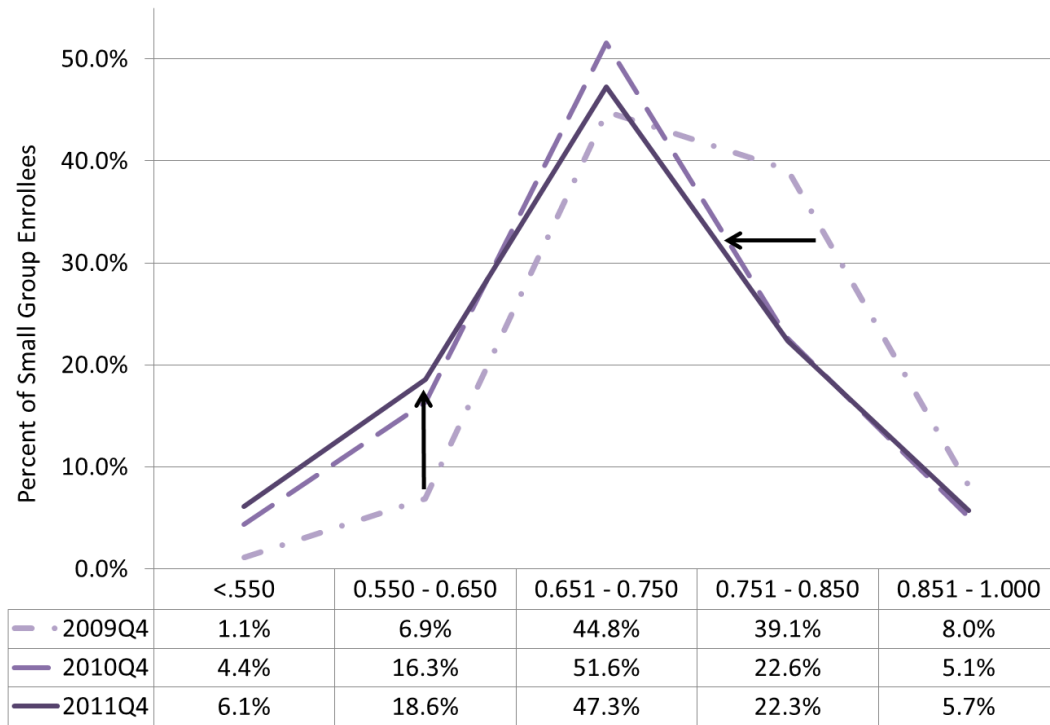


FIGURE DA 9: BENEFIT BUY-DOWN IN THE MASSACHUSETTS COMMERCIAL MARKET



Notes: Trend rates calculated from un-rounded pmpm amounts (not shown); premiums are pre-MLR rebates
Source: Oliver Wyman analysis of data from Massachusetts payers for resident and non-resident insured lives

FIGURE DA 10: SMALL GROUP MARKET ENROLLEE DISTRIBUTION BY ACTUARIAL VALUE



Source: Oliver Wyman analysis of data from Massachusetts payers for resident and non-resident insured lives

FIGURE DA 11: TOTAL AND PMPM MEDICAL SPENDING (2010-2011)

Payers	Medical Expenses Totals (in millions)		Medical Expenses PMPM'	
	2011	Change: 2010-2011	2011	Change: 2010-2011
BCBS of MA"	\$4,082.10	-1.7%	\$375	3.5%
Fallon Community Health Plan"	\$437	-7.5%	\$330	3.8%
Harvard Pilgrim Health Care"	\$1,760	3.3%	\$377	2.7%
Health New England Inc.	\$318	7.6%	\$328	3.6%
Neighborhood Health Plan Inc.	\$185	26.5%	\$312	-6.8%
Tufts Health Plan"	\$1,257	0.4%	\$368	2.5%
Total	\$8,038	0.2%	\$368	2.9%

' Member months exclude self-funded employer groups; " Consolidated

Source: Oliver Wyman analysis of data from Massachusetts payers for resident and non-resident insured lives

FIGURE DA 12: MASSACHUSETTS PAYER RETENTION (2009-2011)

Payers	Reported Premium Collection in Excess of Medical Spending (in millions)			Change	
	2009	2010	2011	2009-2010	2010 - 2011
BCBS of MA"	\$410,936,238	\$441,453,118	\$518,676,629	7.4%	17.5%
Fallon Community Health Plan"	\$55,299,441	\$92,765,318	\$83,450,609	67.8%	-10.0%
Harvard Pilgrim Health Care"	\$167,034,833	\$220,105,087	\$276,091,457	31.8%	25.4%
Health New England Inc.	\$37,369,650	\$46,835,322	\$51,799,932	25.3%	10.6%
Neighborhood Health Plan Inc.	\$21,620,326	\$21,987,573	\$43,261,089	1.7%	96.8%
Tufts Health Plan"	\$104,454,720	\$148,014,730	\$199,798,671	41.7%	35.0%
Total	\$796,715,208	\$971,161,148	\$1,173,078,386	21.9%	20.8%

' Premiums post-MLR rebates; "Consolidated

Source: Oliver Wyman analysis of data from Massachusetts payers for resident and non-resident insured lives

FIGURE DA 13: HOSPITAL COMPARE TABLES

% of heart attack patients given aspirin at discharge					
	System			State Average	National Average
	Weighted Average	Max	Min		
Baystate	100.0	100.0	100.0	100	99
Berkshire	100.0	100.0	100.0	100	99
Cape Cod		100.0	100.0	100	99
Caregroup	99.8	100.0	95.0	100	99
Partners	99.5	100.0	99.0	100	99
Steward	99.7	100.0	97.0	100	99
UMass	100.0	100.0	100.0	100	99
Vanguard	100.0	100.0	100.0	100	99
Non-affiliated	99.6	100.0	94.0	100	99

Source: Centers for Medicare & Medicaid Services, 7/2011-6/2012

% of heart attack patients given PCI within 90 minutes of arrival					
	System			State Average	National Average
	Weighted Average	Max	Min		
Baystate	97.0	97.0	97.0	96	95
Berkshire				96	95
Cape Cod	95.0	95.0	95.0	96	95
Caregroup	97.4	100.0	95.0	96	95
Partners	93.9	98.0	91.0	96	95
Steward	94.1	100.0	88.0	96	95
UMass	95.0	95.0	95.0	96	95
Vanguard	98.9	100.0	98.0	96	95
Non-affiliated	95.7	100.0	76.0	96	95

Source: Centers for Medicare & Medicaid Services, 7/2011-6/2012

% of heart failure patients given an evaluation of Left Ventricular Systolic (LVS) function					
	System			State Average	National Average
	Weighted Average	Max	Min		
Baystate	100.0	100.0	100.0	99	99
Berkshire	100.0	100.0	100.0	99	99
Cape Cod	100.0	100.0	100.0	99	99
Caregroup	99.8	100.0	99.0	99	99
Partners	99.4	100.0	80.0	99	99
Steward	99.5	100.0	98.0	99	99
UMass	99.2	100.0	98.0	99	99
Vanguard	100.0	100.0	100.0	99	99
Non-affiliated	99.3	100.0	88.0	99	99

Source: Centers for Medicare & Medicaid Services, 7/2011-6/2012

% of heart failure patients given ACE inhibitor or ARB for Left Ventricular Systolic Dysfunction (LVSD)					
	System			State Average	National Average
	Weighted Average	Max	Min		
Baystate	98.3	100.0	80.0	96	97
Berkshire	100.0	100.0	100.0	96	97
Cape Cod	94.4	97.0	93.0	96	97
Caregroup	98.7	100.0	95.0	96	97
Partners	98.7	100.0	98.0	96	97
Steward	95.5	100.0	91.0	96	97
UMass	93.7	100.0	78.0	96	97
Vanguard	98.0	98.0	98.0	96	97
Non-affiliated	95.8	100.0	79.0	96	97

Source: Centers for Medicare & Medicaid Services, 7/2011-6/2012

% of pneumonia patients given the most appropriate initial antibiotic(s)					
	System			State Average	National Average
	Weighted Average	Max	Min		
Baystate	95.8	97.0	90.0	96	95
Berkshire	99.5	100.0	97.0	96	95
Cape Cod	97.3	98.0	97.0	96	95
Caregroup	96.4	98.0	96.0	96	95
Partners	96.7	100.0	73.0	96	95
Steward	96.6	100.0	94.0	96	95
UMass	95.5	98.0	89.0	96	95
Vanguard	97.6	98.0	97.0	96	95
Non-affiliated	96.2	100.0	90.0	96	95

Source: Centers for Medicare & Medicaid Services, 7/2011-6/2012

% of surgery patients who were given an antibiotic at the right time (within one hour before surgery) to help prevent infection					
	System			State Average	National Average
	Weighted Average	Max	Min		
Baystate	97.8	98.0	95.0	99	98
Berkshire	100.0	100.0	100.0	99	98
Cape Cod	99.4	100.0	99.0	99	98
Caregroup	98.8	99.0	96.0	99	98
Partners	99.1	100.0	99.0	99	98
Steward	98.6	100.0	94.0	99	98
UMass	97.6	100.0	94.0	99	98
Vanguard	98.0	98.0	98.0	99	98
Non-affiliated	98.6	100.0	82.0	99	98

Source: Centers for Medicare & Medicaid Services, 7/2011-6/2012

% of surgery patients who were given the right kind of antibiotic to help prevent infection					
	System			State Average	National Average
	Weighted Average	Max	Min		
Baystate	98.6	99.0	95.0	99	99
Berkshire	100.0	100.0	100.0	99	99
Cape Cod	99.0	99.0	99.0	99	99
Caregroup	99.4	100.0	99.0	99	99
Partners	99.0	100.0	97.0	99	99
Steward	99.0	100.0	98.0	99	99
UMass	98.1	100.0	95.0	99	99
Vanguard	99.0	99.0	99.0	99	99
Non-affiliated	98.6	100.0	95.0	99	99

Source: Centers for Medicare & Medicaid Services, 7/2011-6/2012

% of surgery patients whose preventive antibiotics were stopped at the right time (within 24 hours after surgery)					
	System			State Average	National Average
	Weighted Average	Max	Min		
Baystate	98.3	100.0	90.0	98	97
Berkshire	100.0	100.0	100.0	98	97
Cape Cod	98.4	99.0	98.0	98	97
Caregroup	98.4	99.0	94.0	98	97
Partners	96.8	99.0	94.0	98	97
Steward	97.4	100.0	96.0	98	97
UMass	97.0	100.0	96.0	98	97
Vanguard	98.6	99.0	97.0	98	97
Non-affiliated	97.9	100.0	94.0	98	97

Source: Centers for Medicare & Medicaid Services, 7/2011-6/2012

% of surgery patients whose urinary catheters were removed on the first or second day after surgery					
System	System			State Average	National Average
	Weighted Average	Max	Min		
Baystate	97.9	100.0	89.0	95	96
Berkshire	99.0	99.0	99.0	95	96
Cape Cod	98.2	100.0	97.0	95	96
Caregroup	94.4	99.0	86.0	95	96
Partners	91.7	99.0	83.0	95	96
Steward	94.9	99.0	77.0	95	96
UMass	89.7	100.0	85.0	95	96
Vanguard	98.8	99.0	98.0	95	96
Non-affiliated	95.1	100.0	78.0	95	96

Source: Centers for Medicare & Medicaid Services, 7/2011-6/2012

% of patients having surgery who were actively warmed in the operating room or whose body temperature was near normal by the end of surgery					
System	System			State Average	National Average
	Weighted Average	Max	Min		
Baystate	100.0	100.0	100.0	100	100
Berkshire	100.0	100.0	100.0	100	100
Cape Cod	100.0	100.0	100.0	100	100
Caregroup	100.0	100.0	100.0	100	100
Partners	99.7	100.0	99.0	100	100
Steward	99.9	100.0	99.0	100	100
UMass	97.8	100.0	97.0	100	100
Vanguard	99.3	100.0	99.0	100	100
Non-affiliated	99.8	100.0	98.0	100	100

Source: Centers for Medicare & Medicaid Services, 7/2011-6/2012

FIGURE DA 14: HCAHPS TABLES

% of patients reporting that room was 'always' clean					
	System			State Average	National Average
	Weighted Average	Max	Min		
Baystate	67.3	77	67	73	73
Berkshire	76.2	88	75	73	73
Cape Cod	77.4	78	76	73	73
Caregroup	72.6	77	71	73	73
Partners	72.4	83	65	73	73
Steward	69.3	79	65	73	73
UMass	62.8	93	61	73	73
Vanguard	71.2	72	70	73	73
Non-affiliated	70.2	84	59	73	73

Source: Agency for Healthcare Research and Quality, 7/1/2011-6/30/12

% of patients who reported that the area around their room was 'always' quiet at night					
	System			State Average	National Average
	Weighted Average	Max	Min		
Baystate	46.3	62.0	45.0	52	60
Berkshire	50.7	67.0	49.0	52	60
Cape Cod	48.7	49.0	48.0	52	60
Caregroup	52.6	57.0	48.0	52	60
Partners	54.1	73.0	49.0	52	60
Steward	47.1	55.0	43.0	52	60
UMass	44.8	64.0	42.0	52	60
Vanguard	51.0	54.0	49.0	52	60
Non-affiliated	50.1	65.0	39.0	52	60

Source: Agency for Healthcare Research and Quality, 7/1/2011-6/30/12

% of patients reporting that doctors 'always' communicated well					
	System			State Average	National Average
	Weighted Average	Max	Min		
Baystate	79.8	81.0	78.0	81	81
Berkshire	76.0	86.0	75.0	81	81
Cape Cod	81.3	82.0	81.0	81	81
Caregroup	81.5	86.0	79.0	81	81
Partners	81.5	94.0	77.0	81	81
Steward	78.1	81.0	75.0	81	81
UMass	77.1	84.0	76.0	81	81
Vanguard	79.8	81.0	79.0	81	81
Non-affiliated	80.1	83.0	77.0	81	81

Source: Agency for Healthcare Research and Quality, 7/1/2011-6/30/12

% of patients reporting that nurses 'always' communicated well					
	System			State Average	National Average
	Weighted Average	Max	Min		
Baystate	78.2	81.0	78.0	79	78
Berkshire	81.0	91.0	80.0	79	78
Cape Cod	79.7	80.0	79.0	79	78
Caregroup	80.9	85.0	78.0	79	78
Partners	80.4	88.0	75.0	79	78
Steward	78.2	79.0	75.0	79	78
UMass	73.4	90.0	72.0	79	78
Vanguard	78.2	80.0	77.0	79	78
Non-affiliated	78.8	83.0	72.0	79	78

Source: Agency for Healthcare Research and Quality, 7/1/2011-6/30/12

% of patients who reported that staff 'always' explained about medicines					
System	System			State Average	National Average
	Weighted Average	Max	Min		
Baystate	63.1	74.0	61.0	64	63
Berkshire	63.3	76.0	62.0	64	63
Cape Cod	61.4	62.0	60.0	64	63
Caregroup	65.6	68.0	61.0	64	63
Partners	65.0	78.0	57.0	64	63
Steward	61.3	65.0	56.0	64	63
UMass	59.4	76.0	58.0	64	63
Vanguard	62.8	64.0	62.0	64	63
Non-affiliated	63.9	70.0	57.0	64	63

Source: Agency for Healthcare Research and Quality, 7/1/2011-6/30/12

% of patients who reported that they 'always' received help as soon as they wanted					
System	System			State Average	National Average
	Weighted Average	Max	Min		
Baystate	59.1	71.0	58.0	66	67
Berkshire	67.4	81.0	66.0	66	67
Cape Cod	65.6	67.0	65.0	66	67
Caregroup	65.9	72.0	60.0	66	67
Partners	67.4	85.0	64.0	66	67
Steward	61.7	66.0	56.0	66	67
UMass	55.3	81.0	53.0	66	67
Vanguard	65.6	68.0	64.0	66	67
Non-affiliated	62.3	73.0	55.0	66	67

Source: Agency for Healthcare Research and Quality, 7/1/2011-6/30/12

% of patients who reported that their pain was 'always' well controlled.					
System	System			State Average	National Average
	Weighted Average	Max	Min		
Baystate	70.9	76.0	69.0	72	71
Berkshire	71.9	80.0	71.0	72	71
Cape Cod	72.9	75.0	72.0	72	71
Caregroup	71.6	77.0	64.0	72	71
Partners	72.9	85.0	68.0	72	71
Steward	69.9	74.0	66.0	72	71
UMass	66.3	83.0	65.0	72	71
Vanguard	69.6	72.0	68.0	72	71
Non-affiliated	71.2	76.0	65.0	72	71

Source: Agency for Healthcare Research and Quality, 7/1/2011-6/30/12

% of patients who reported that they were given information about what to do during their recovery at home					
System	System			State Average	National Average
	Weighted Average	Max	Min		
Baystate	89.1	94.0	89.0	87	84
Berkshire	90.0	90.0	90.0	87	84
Cape Cod	84.6	86.0	84.0	87	84
Caregroup	88.1	92.0	84.0	87	84
Partners	88.5	90.0	85.0	87	84
Steward	85.7	88.0	82.0	87	84
UMass	86.8	88.0	84.0	87	84
Vanguard	87.6	88.0	87.0	87	84
Non-affiliated	86.9	90.0	83.0	87	84

Source: Agency for Healthcare Research and Quality, 7/1/2011-6/30/12

% of patients reporting that they would definitely recommend the hospital					
System	System			State Average	National Average
	Weighted Average	Max	Min		
Baystate	74.5	75.0	70.0	74	71
Berkshire	68.2	89.0	66.0	74	71
Cape Cod	80.5	82.0	77.0	74	71
Caregroup	82.0	90.0	75.0	74	71
Partners	85.0	90.0	73.0	74	71
Steward	65.3	72.0	53.0	74	71
UMass	71.3	90.0	65.0	74	71
Vanguard	75.5	78.0	72.0	74	71
Non-affiliated	73.5	83.0	65.0	74	71

Source: Agency for Healthcare Research and Quality, 7/1/2011-6/30/12

% of patients who gave the hospital an overall rating of '9' or '10'					
System	System			State Average	National Average
	Weighted Average	Max	Min		
Baystate	68.1	72.0	68.0	69	70
Berkshire	68.7	85.0	67.0	69	70
Cape Cod	75.8	77.0	73.0	69	70
Caregroup	76.4	86.0	71.0	69	70
Partners	79.4	82.0	65.0	69	70
Steward	64.8	67.0	55.0	69	70
UMass	63.9	83.0	60.0	69	70
Vanguard	69.6	70.0	69.0	69	70
Non-affiliated	68.8	76.0	60.0	69	70

Source: Agency for Healthcare Research and Quality, 7/1/2011-6/30/12

FIGURE DA 15: AHRQ TABLES

Central Venous Catheter-Related Blood Stream Infection Rate					
	System			State Average	National Average
	Weighted Average	Max	Min		
Baystate	0.30	0.46	0.00	0.28	0.39
Berkshire	0.09	0.09	0.00	0.28	0.39
Cape Cod	0.21	0.30	0.00	0.28	0.39
Caregroup	0.55	0.82	0.00	0.28	0.39
Partners	0.29	0.38	0.00	0.28	0.39
Steward	0.19	0.67	0.00	0.28	0.39
UMass	0.23	0.44	0.00	0.28	0.39
Vanguard	0.09	0.22	0.00	0.28	0.39
Non-affiliated	0.27	1.12	0.00	0.28	0.39

Source: Agency for Healthcare Research and Quality, 10/1/10-9/30/11

Iatrogenic Pneumothorax (Risk Adjusted)					
	System			State Average	National Average
	Weighted Average	Max	Min		
Baystate	0.14	0.2	0.0	0.41	0.42
Berkshire	0.70	0.8	0.0	0.41	0.42
Cape Cod	0.31	0.4	0.3	0.41	0.42
Caregroup	0.17	0.8	0.0	0.41	0.42
Partners	0.48	0.6	0.0	0.41	0.42
Steward	0.35	1.6	0.0	0.41	0.42
UMass	0.56	0.8	0.0	0.41	0.42
Vanguard	0.53	0.7	0.3	0.41	0.42
Non-affiliated	0.31	1.2	0.0	0.41	0.42

Source: Agency for Healthcare Research and Quality, 10/1/10-9/30/11

Postoperative Respiratory Failure Rate					
	System			State Average	National Average
	Weighted Average	Max	Min		
Baystate	4.6	7.7	0.0	6.59	8.28
Berkshire	1.6	11.3	0.0	6.59	8.28
Cape Cod	7.9	17.8	0.0	6.59	8.28
Caregroup	9.4	26.4	0.0	6.59	8.28
Partners	4.2	32.1	3.6	6.59	8.28
Steward	7.4	7.6	6.9	6.59	8.28
UMass	5.6	9.3	4.0	6.59	8.28
Vanguard	3.8	4.0	0.0	6.59	8.28
Non-affiliated	9.1	31.8	0.0	6.59	8.28

Source: Agency for Healthcare Research and Quality, 10/1/10-9/30/11

Postoperative DVT or PE					
	System			State Average	National Average
	Weighted Average	Max	Min		
Baystate	3.23	4.17	0.00	4.6	6.17
Berkshire	2.77	2.93	0.00	4.6	6.17
Cape Cod	5.56	2.11	1.90	4.6	6.17
Caregroup	1.38	5.65	0.00	4.6	6.17
Partners	5.38	7.36	0.00	4.6	6.17
Steward	2.76	4.18	0.93	4.6	6.17
UMass	4.64	5.57	2.36	4.6	6.17
Vanguard	7.54	10.18	2.26	4.6	6.17
Non-affiliated	4.82	9.76	0.00	4.6	6.17

Source: Agency for Healthcare Research and Quality, 10/1/10-9/30/11

Accidental Puncture or Laceration					
	System			State Average	National Average
	Weighted Average	Max	Min		
Baystate	0.26	0.31	0.00	2.06	2.66
Berkshire	1.58	1.62	1.57	2.06	2.66
Cape Cod	2.96	5.52	1.97	2.06	2.66
Caregroup	1.85	3.74	0.42	2.06	2.66
Partners	2.09	2.67	0.00	2.06	2.66
Steward	1.77	4.74	0.00	2.06	2.66
UMass	1.50	2.01	0.00	2.06	2.66
Vanguard	1.45	1.48	1.43	2.06	2.66
Non-affiliated	1.89	4.67	0.00	2.06	2.66

Source: Agency for Healthcare Research and Quality, 10/1/10-9/30/11



Center for Health Information and Analysis

Center for Health Information and Analysis
Two Boylston Street
Boston, Massachusetts 02116

Phone: (617) 988-3100
Fax: (617) 727-7662

Website: www.mass.gov/chia

Publication Number: 13-226-CHIA-03
Authorized by Gary Lambert, State Purchasing Agent