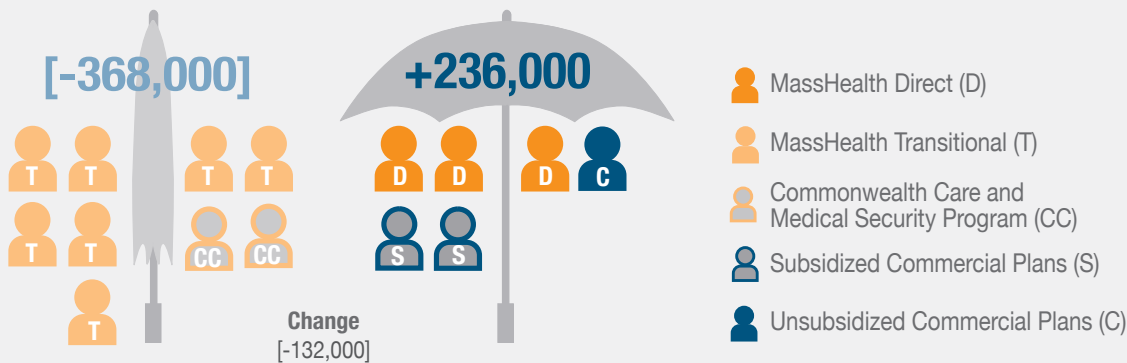


How Did Massachusetts Health Insurance Enrollment Change During the Second ACA Open Enrollment Period?

While Total Annual Non-Medicare Enrollment Held Steady, From **December 2014** to **March 2015**

Massachusetts Non-Medicare Enrollment Change (December 2014 - March 2015)



MassHealth Transitional

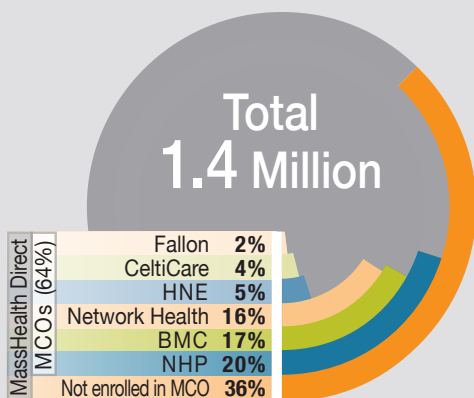
Commonwealth Care

Medical Security Program

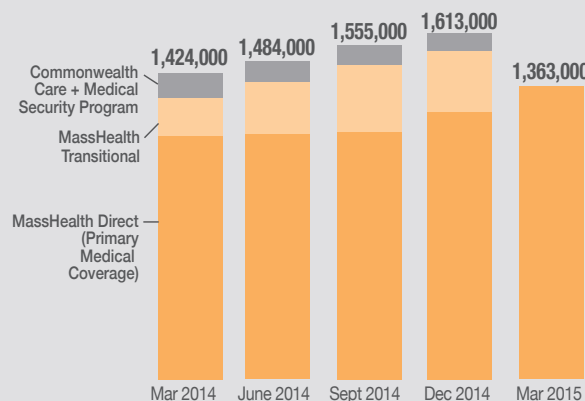
CLOSED

Massachusetts Public Program Enrollment

Massachusetts Public Program Enrollment (March 2015)

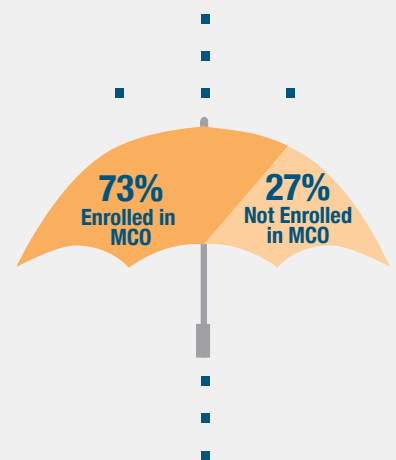


Massachusetts Public Program Enrollment (March 2014 to March 2015)



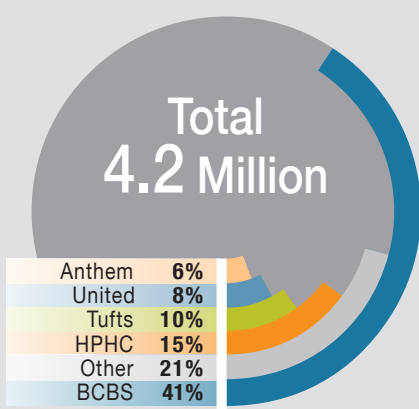
+119,000

MassHealth Direct Members Added

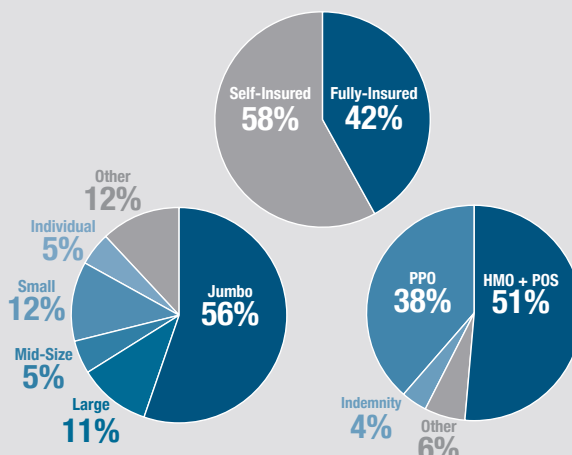


Massachusetts Commercial Enrollment

Massachusetts Commercial Enrollment (March 2015)



Massachusetts Commercial Enrollment (March 2015)



+117,000

Commercial Members Added

