

Steward St. Elizabeth's Medical Center is a large, for-profit teaching hospital located in the Metro Boston region. St. Elizabeth's is a member of Steward Health Care System. It also qualifies as a Disproportionate Share Hospital (DSH). In FY2013, St. Elizabeth's had the most interns and residents per 100 beds within the teaching hospital cohort. St. Elizabeth's was profitable three of the five years in the FY09 to FY13 period, and had a total margin of 3.1% in FY13, compared to a median 7.6% among cohort hospitals.

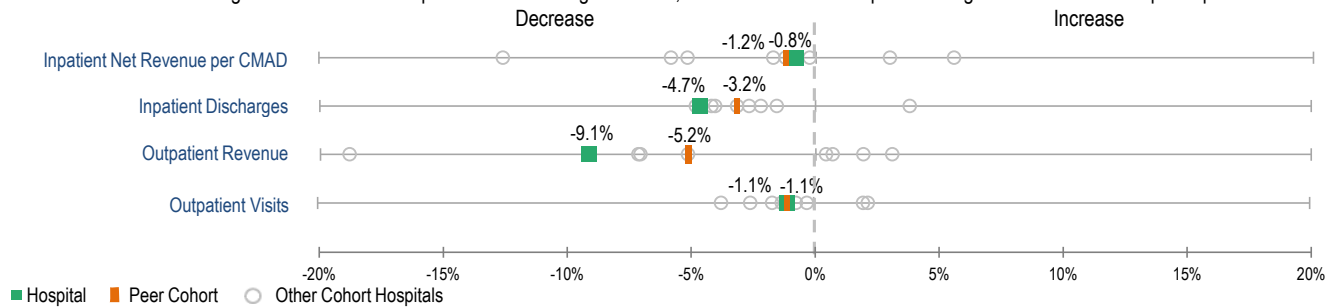
## AT A GLANCE

TOTAL STAFFED BEDS: 266, among the larger acute hospitals  
% OCCUPANCY: 64%, lowest in cohort (avg. 75%)  
CASE MIX INDEX in FY13: 1.12, > cohort avg. (0.99); > statewide (0.89)  
INPATIENT DISCHARGES in FY13: 13,057  
TRAUMA CENTER DESIGNATION: Not Applicable  
EMERGENCY DEPT VISITS in FY13: 32,692

PUBLIC PAYER MIX: 63% (DSH\* Hospital)  
SPECIAL PUBLIC FUNDING: ICB<sup>9</sup>  
CY13 COMMERCIAL PAYER PRICE LEVEL: 68th Percentile  
ADJUSTED<sup>†</sup> COST PER DISCHARGE: \$10,403  
INPATIENT:OUTPATIENT REVENUE in FY13: 45%:55%  
CHANGE IN OWNERSHIP (FY09-FY13): Steward Health Care - 2010

## GROWTH MEASURES

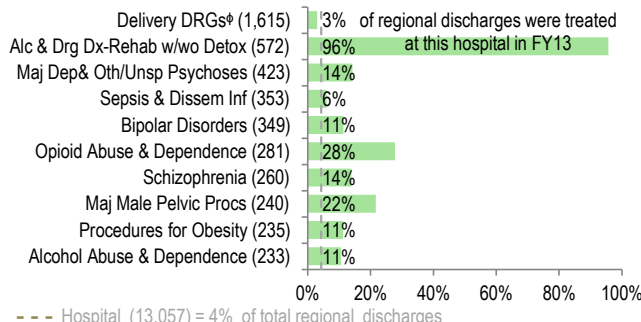
What were the FY12 to FY13 growth rates at this hospital for the following measures, and how do these compare to the growth rates of the hospital's peer cohort?



## SERVICES

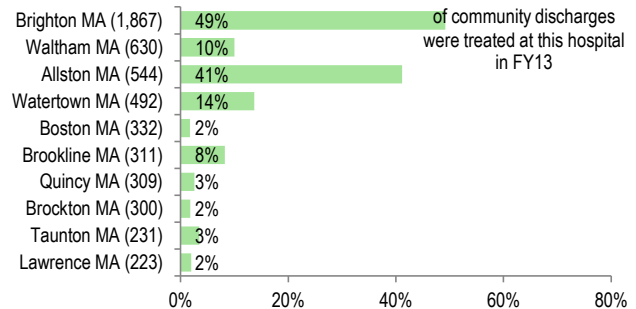
What were the most common inpatient cases (DRGs) treated at the hospital? What proportion of the region's cases did this hospital treat for each service?

### Discharges by DRG



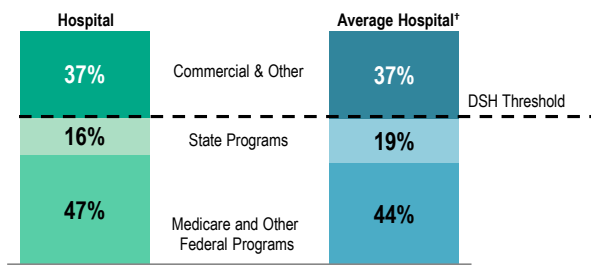
Where did most of the hospital's inpatients reside? What proportion of each community's total discharges were attributed to this hospital?

### Discharges by Community



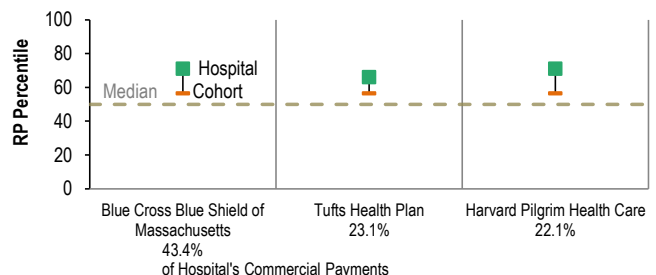
## PAYER MIX

What was the hospital's overall payer mix (gross charges) in FY13, and how does this hospital compare to the average acute hospital's payer mix?



Percentage calculations may not sum to 100% due to rounding

What were the hospital's CY13 payer-specific relative price levels for its top three commercial payers? How does this hospital compare to the average hospital in its peer cohort?

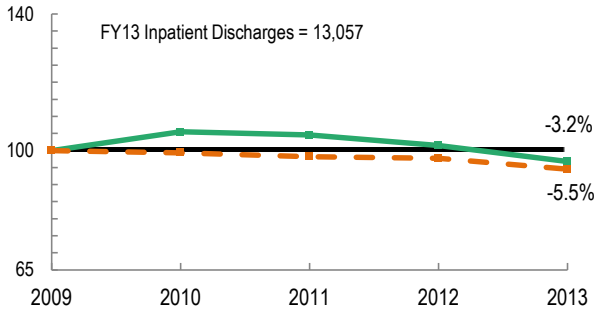


For descriptions of the metrics, please see Technical Appendix.

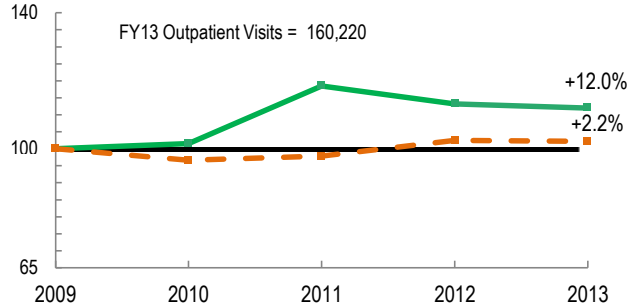


**UTILIZATION TRENDS**

How has the volume of the hospital's inpatient discharges changed compared to FY09, and how does this hospital compare to the median hospital in its peer cohort? (FY09=100)

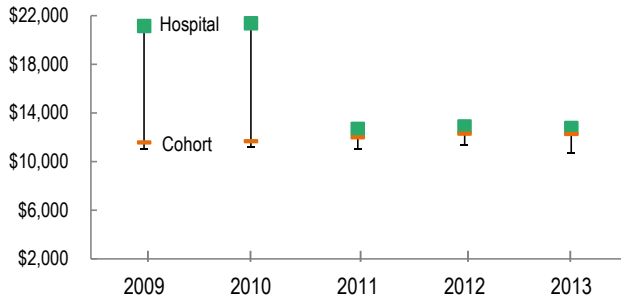


How has the volume of the hospital's outpatient visits changed compared to FY09, and how does this hospital compare to the median hospital in its peer cohort? (FY09=100)



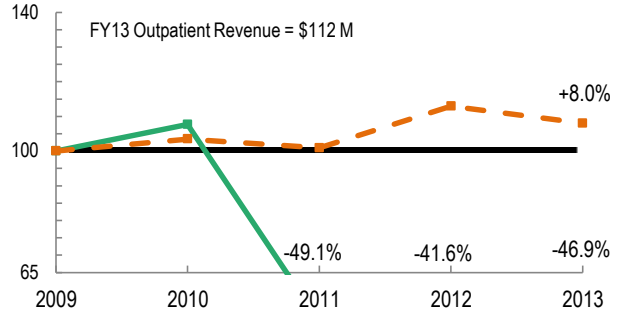
**PATIENT REVENUE TRENDS**

What was the hospital's net inpatient service revenue per case mix adjusted discharge between FY09 and FY13, and how does this hospital compare to the median hospital in its peer cohort?



FY13 Inpatient Revenue per CMAD = \$12,762 | Full Cost per CMAD = \$12,021

How has the hospital's total outpatient revenue changed compared to FY09, and how does this hospital compare to the median hospital in its peer cohort? (FY09=100)

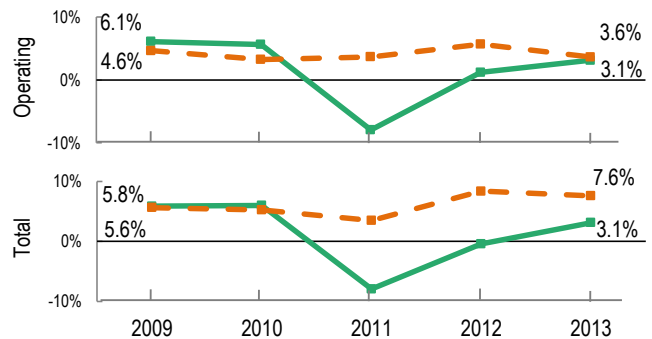


**FINANCIAL PERFORMANCE**

How have the hospital's total revenue and costs changed between FY09 and FY13?

Revenue, Cost & Profit/Loss (in millions)					
FY	Total Revenue	Operating Revenue	Non-Operating Revenue	Total Costs	Total Profit/Loss
2009	\$382	\$383	(\$1)	\$360	\$22.3
2010	\$415	\$413	\$2	\$390	\$24.8
2011	\$264	\$264	\$0	\$285	(\$20.9)
2012	\$306	\$311	(\$5)	\$307	(\$1.3)
2013	\$313	\$313	\$0	\$303	\$9.8

What were the hospital's total margin and operating margin between FY09 and FY13, and how do these compare to the median of its peer cohort hospitals?



For descriptions of the metrics, please see Technical Appendix.

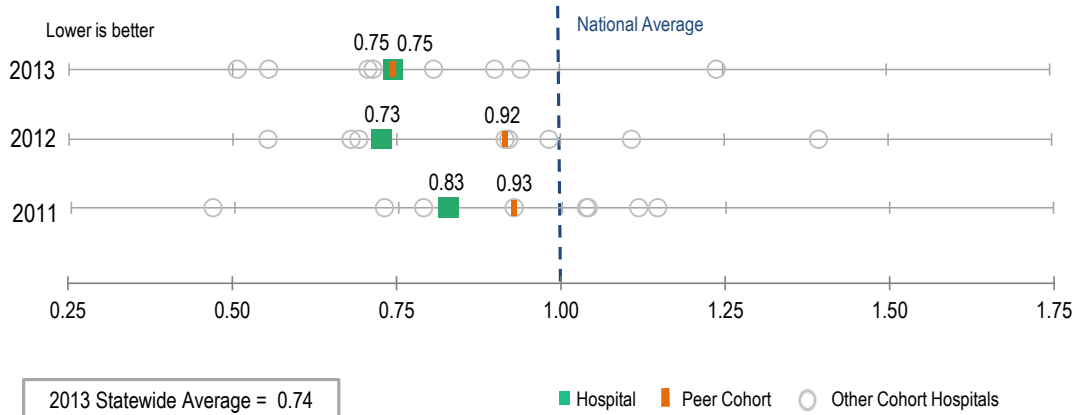
\* Disproportionate Share Hospitals (DSH) receive a minimum of 63% of gross patient service revenue from public payers.  
 † For more information on Infrastructure and Capacity Building (ICB) special funding, please contact the Massachusetts Executive Office of Health and Human Services (EOHHS).  
 ‡ Costs were adjusted to exclude direct medical education costs and physician compensation.  
 † Delivery DRG includes Cesarean and Vaginal Deliveries, and Neonate DRG.  
 † Average Hospital does not include Specialty hospitals.

**QUALITY OVERVIEW**

The selected quality measures displayed in this hospital's profile are derived from the Commonwealth's Standard Quality Measure Set (SQMS). CHIA is required to uniformly report hospital performance on SQMS measures. SQMS measures are used by health plans for tiering providers for certain insurance products. They may also be used to inform consumers about the quality and safety of their care providers. The selected indicators are hospital-specific measures based on information that hospitals self-report to CHIA and other entities, including the federal Centers for Medicare and Medicaid Services (CMS) and The Leapfrog Group.

**PATIENT SAFETY**

How many complications or adverse events were reported at this hospital for conditions included in the **PSI-90 Composite**, relative to the annual national average of 1.00? How does this compare to the median of its peer cohort?

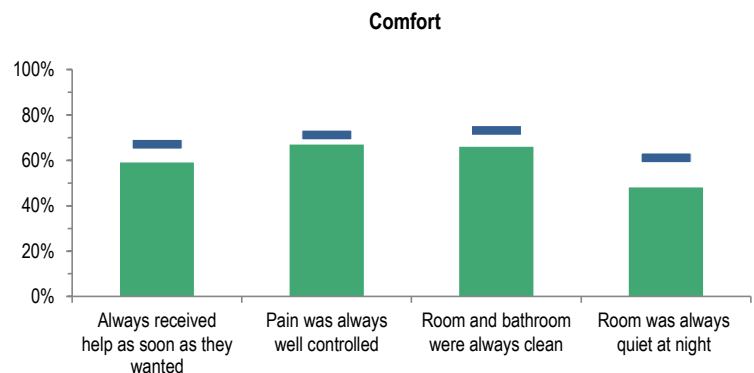
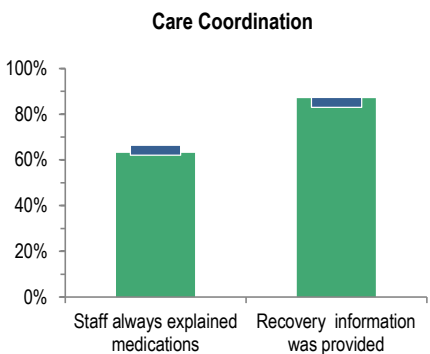
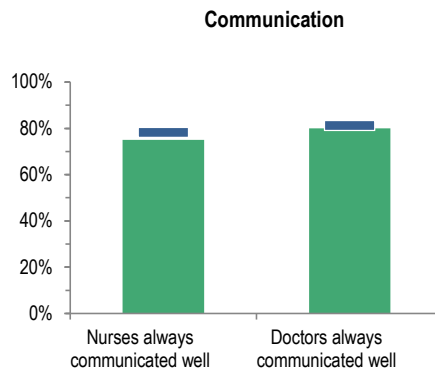
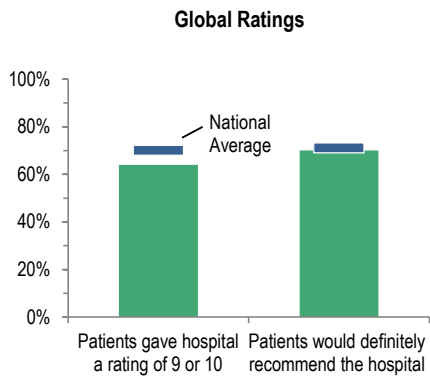


*The PSI-90 is a summary of 11 Patient Safety Indicators (PSIs) that measure adverse events for various procedures.*

Population: All patients  
 Score: Lower is better  
 Source: Hospital Discharge Data (HDD); CHIA-calculated indicator, risk adjusted  
 Data Period\*: 10/1-9/30

**PATIENT EXPERIENCE**

How well did the hospital fulfill the following **key expectations for patient experience**, based on patient surveys? How does this compare to the national average?



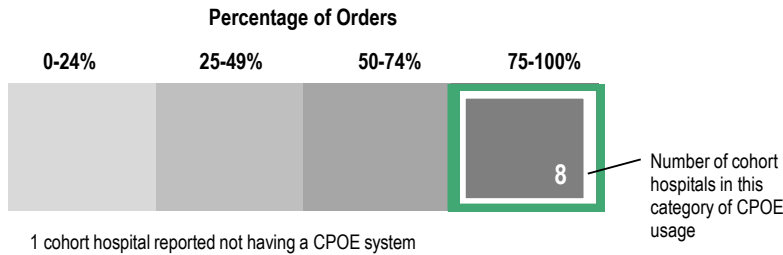
*The HCAHPS survey measures patient perspectives on key aspects of their care.*

Population: All patients  
 Score: Higher is better  
 Source: Centers for Medicare and Medicaid Services (CMS) Hospital Compare  
 Data Period\*: 2012-2013

For descriptions of the metrics, please see Technical Appendix.

**CARE PRACTICES**

What percentage of **medication orders** were entered by a physician using an electronic system that included error checking? How does this hospital compare to the median hospital in its peer cohort?

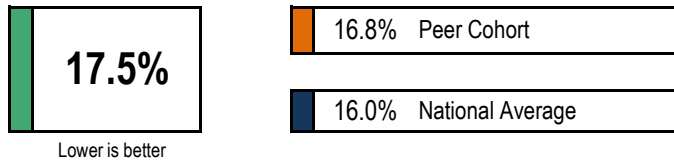


*Computerized Physician Order Entry (CPOE) is believed to increase efficiency and reduce transcription errors.*

Population: 9 of 9 cohort hospitals responded to this survey  
 Score: Higher is better  
 Source: The Leapfrog Group Hospital Survey^  
 Data Period\*: 2012-2013

**READMISSIONS**

What percentage of Medicare patients who were discharged from this hospital were **readmitted to any hospital within 30 days**? How does this compare to the median hospital in its peer cohort, and the national average?

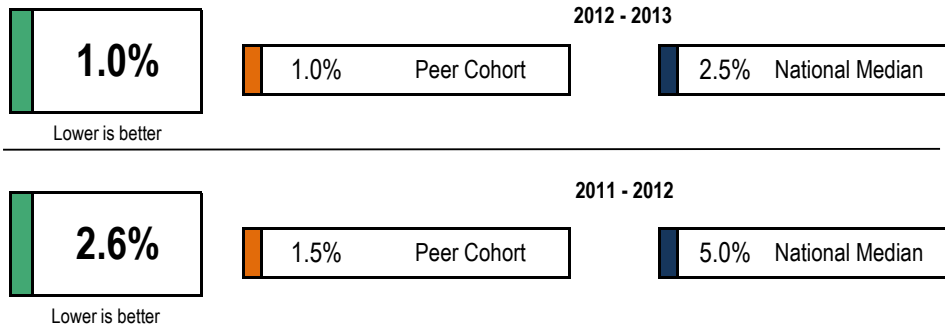


*Hospital-Wide All-Cause 30-Day Readmissions follows patients for 30 days from discharge and determines if they are readmitted to any hospital for any unplanned reason.*

Population: Medicare Fee For Service (FFS) patients age 65+  
 Score: Lower is better  
 Source: CMS Hospital Compare  
 Data Period\*: 2011-2012

**OBSTETRIC CARE**

What percentage of all newborn deliveries at this hospital were **clinically unnecessary inductions before the recommended 39 weeks of gestation**? How does this compare to the median hospital in its peer cohort, and the national median?

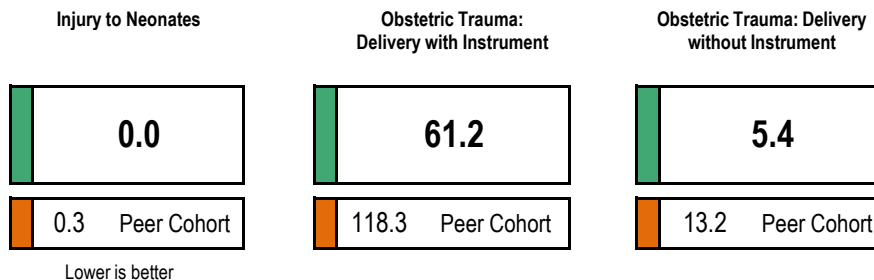


*Clinically Unnecessary Elective Deliveries before 39 weeks of gestation are associated with higher risks for newborns.*

Population: Non-clinically complicated births. 41 hospitals reported data for this measure.  
 Score: Lower is better  
 Source: The Leapfrog Group Hospital Survey^  
 Data Period\*: 2011-2012 and 2012-2013

**OBSTETRIC CARE COMPLICATIONS**

Out of every 1,000 births, how many patients experienced an adverse event? How does this compare to the median hospital in its peer cohort?



*Complications and adverse events during birth can harm both the mother and infant.*

Population: 42 hospitals are included in this analysis  
 Score: Lower is better  
 Source: HDD; CHIA-calculated indicator, not risk adjusted  
 Data Period\*: 2012-2013

For descriptions of the metrics, please see Technical Appendix.

\* Data Periods vary by measure based on data source. Please see Technical Appendix for measure-specific reporting periods.

^ Measures from The Leapfrog Survey are voluntarily reported by hospitals. Not all hospitals report this data.