

Hospital Profile: JORDAN HOSPITAL

Community Hospital
South Shore Region

Jordan Hospital is a non-profit, acute care community hospital. It is a mid-size Massachusetts hospital, with 172 staffed beds. Jordan Hospital is located in the South Shore region and represents 27% of all acute hospital staffed beds in the region. In January 2014, Jordan Hospital became an affiliate of Beth Israel Deaconess Medical Center, a member of the CareGroup Healthcare System, and is now known as Beth Israel Deaconess Hospital –Plymouth.

PATIENTS Forty percent of all inpatient cases treated at Jordan Hospital are from Plymouth.

INPATIENT SERVICES Compared with the other community hospitals, Jordan Hospital treats a greater proportion of mid-severity cases. In FY12, it accounted for 25% of all inpatient discharges from acute hospitals within the South Shore region. Of note, based on its most common FY12 inpatient cases (DRGs), Jordan Hospital treated 64% of all Degenerative Nervous System Disorders Excluding Multiple Sclerosis cases and 33% of all Cardiac Arrhythmia & Conduction Disorder cases in the South Shore region.

FINANCIAL PERFORMANCE Jordan Hospital's total revenue in FY12 was \$206 million. Its FY12 public payer mix was 58%, greater than the average community hospital. Jordan Hospital's FY12 inpatient cost[†] per case mix adjusted discharge was \$9,851, approximately 4% lower than the average community hospital. Jordan Hospital's CY12 average commercial payer price level was at the 55th percentile, higher than the average community hospital. It earned a surplus of \$6.1 million (3.0% total margin) in FY12, and was profitable each year in the FY08 to FY12 period except for FY08.

AT A GLANCE

TOTAL STAFFED BEDS: 172, mid-size acute hospital

% OCCUPANCY: 68%, > cohort avg. (62%)

TOTAL REVENUE in FY12: \$206 million

PUBLIC PAYER MIX: 58% (Non-DSH* Hospital)

SPECIAL PUBLIC FUNDING: CHART[^], ICB⁹

TAX STATUS: Non-profit

TRAUMA CENTER DESIGNATION: Not Applicable

CY12 COMMERCIAL PAYER PRICE LEVEL: 55th Percentile

CASE MIX INDEX in FY12: 0.90, > cohort avg. (0.81); < statewide (1.06)

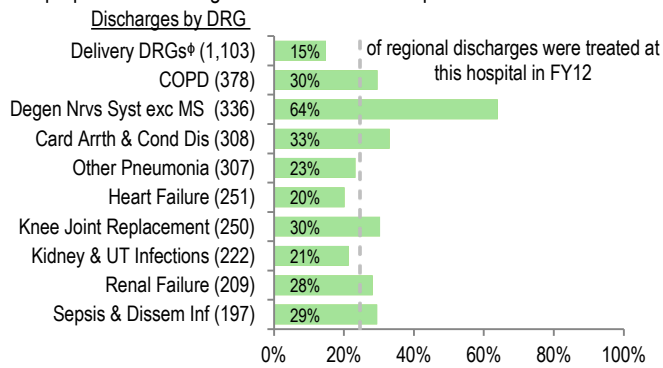
INPATIENT:OUTPATIENT REVENUE in FY12: 30%:70%

TOTAL MARGIN in FY12: 3.0% (\$6.1 million)

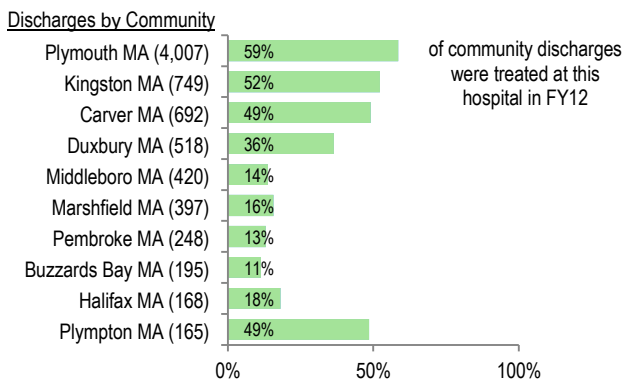
CHANGE in OWNERSHIP (FY08-FY12): Not Applicable

SERVICES

What were the most common inpatient cases (DRGs) treated at the hospital? What proportion of the region's cases did this hospital treat for each service?

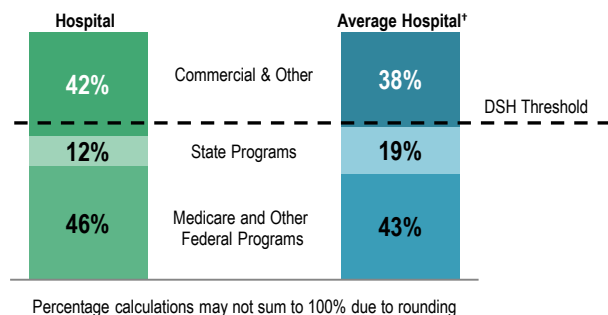


Where did most of the hospital's inpatients reside? What proportion of each community's total discharges were attributed to this hospital?

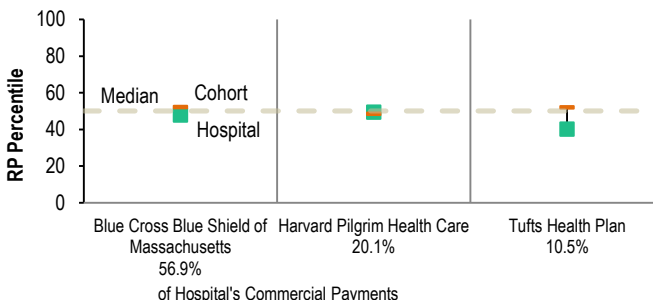


PAYER MIX

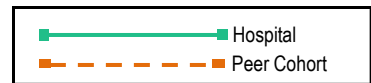
What was the hospital's overall payer mix (gross charges) in FY12, and how does this hospital compare to the average acute hospital's payer mix?



What were the hospital's CY12 payer-specific relative price levels for its top three commercial payers? How does this hospital compare to the average hospital in its peer cohort?

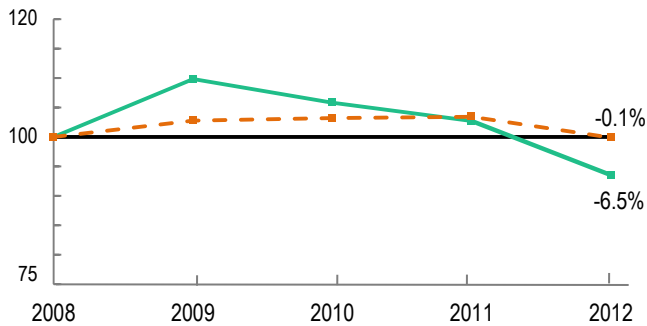


For descriptions of the metrics, please see Technical Appendix.

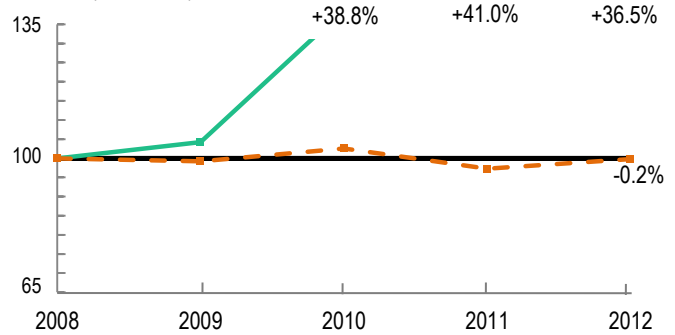


UTILIZATION TRENDS

How has the volume of the hospital's inpatient discharges changed compared to FY08, and how does this hospital compare to the average hospital in its peer cohort? (FY08=100)

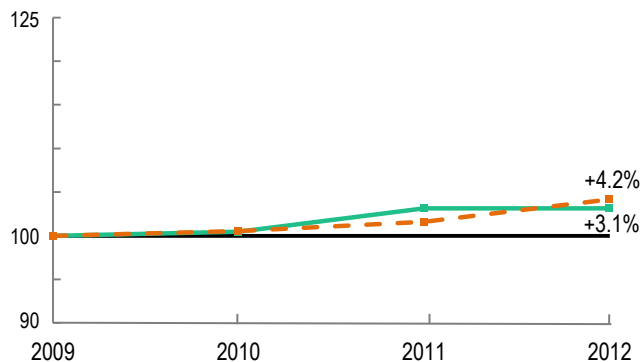


How has the volume of the hospital's outpatient visits changed compared to FY08, and how does this hospital compare to the average hospital in its peer cohort? (FY08=100)

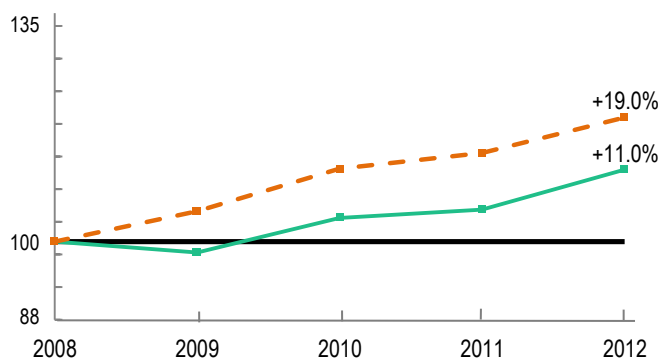


COST TRENDS

How has the hospital's inpatient cost[‡] per case mix adjusted discharge changed compared to FY09, and how does this hospital compare to the average hospital in its peer cohort? (FY09=100)



How have the hospital's total outpatient costs changed compared to FY08, and how does this hospital compare to the average hospital in its peer cohort? (FY08=100)

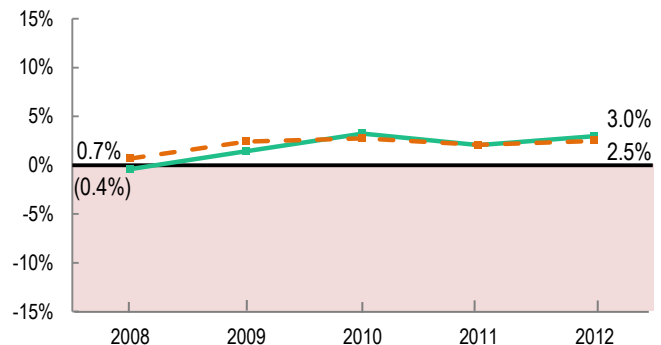


FINANCIAL PERFORMANCE

How have the hospital's total revenue and costs changed between FY08 and FY12?

Revenue, Cost & Profit/Loss (in millions)					
FY	Total Revenue	% Change	Total Cost	% Change	Total Profit/Loss
2008	\$181		\$181		(\$0.7)
2009	\$188	3.8%	\$185	1.9%	\$2.7
2010	\$197	5.1%	\$191	3.2%	\$6.3
2011	\$201	1.9%	\$197	3.1%	\$4.1
2012	\$206	2.7%	\$200	1.7%	\$6.1

What was the hospital's total margin between FY08 and FY12, and how does this compare to the median of its peer cohort hospitals?



For descriptions of the metrics, please see Technical Appendix.

For more information, please contact:

CENTER FOR HEALTH INFORMATION AND ANALYSIS
Two Boylston Street, 5th Floor
Boston, MA 02116

617.988.3100



www.mass.gov/chia/hospitals

[‡] Costs were adjusted to exclude direct medical education costs and physician compensation.

* Disproportionate Share Hospitals (DSH) receive a minimum of 63% of gross patient service revenue from public payers.

[^] For more information on Community Hospital Acceleration, Revitalization and Transformation (CHART) special funding, please contact the Health Policy Commission (HPC).

⁹ For more information on Infrastructure and Capacity Building (ICB) special funding, please contact the Massachusetts Executive Office of Health and Human Services (EOHHS).

^{*} Delivery DRG includes Cesarean and Vaginal Deliveries, and Neonate DRG.

[†] Average Hospital does not include Specialty hospitals.