

CENTER FOR HEALTH INFORMATION AND ANALYSIS

# Performance of the Massachusetts Health Care System

TECHNICAL APPENDIX

MARCH  
24  
Annual Report

Behavioral Health



Publication Number 23-073-CHIA-04C

---

# Behavioral Health Expenditures and Utilization

## TECHNICAL APPENDIX

### Table of Contents

Behavioral Health Expenditures .....	2
Behavioral Health Hospital Utilization .....	6
Appendix A. CCSR Category MBD026 and MBD034 Behavioral Health Classification .....	10

# Behavioral Health Expenditures

## Background

In 2022, Massachusetts enacted legislation expanding access to behavioral health care services, and also charged CHIA with annual reporting on “costs, cost trends, price, quality, utilization, and patient outcomes related to behavioral health service subcategories...”<sup>1</sup> In fulfillment of this requirement, CHIA collects summary level data on behavioral health care spending from health care payers for their Massachusetts resident members, pursuant to **957 CMR 2.00: Payer Data Reporting**. This data is reported to CHIA separately for the following lines of business: private commercial (self and fully-insured), MassHealth Managed Care Organization (MCO), MassHealth Accountable Care Partnership Plan (ACO-A), MassHealth Fee-For-Service (FFS), MassHealth Primary Care ACO (ACO-B), MassHealth Primary Care Clinician (PCC) Plan, Medicare Advantage, Senior Care Options (SCO), One Care, and Programs of All-Inclusive Care for the Elderly (PACE).

## Definitions

The following definitions are applicable to the Behavioral Health chapter of CHIA’s Annual Report only.

- **Mental Health Expenditures:** Includes incurred claims (payer-paid), member-cost-sharing, and non-claims-based payments for services that met CHIA’s criteria for mental health services, including general services provided by a behavioral health clinician, and mental health services provided by any practitioner.
- **Substance Use Disorder Expenditures:** Includes incurred claims (payer-paid), member-cost-sharing, and non-claims-based payments for services that met CHIA’s criteria for substance use disorder services in accordance with the SUD service subset code list.
- **Behavioral Health Expenditures:** The sum of mental health and substance use disorder expenditures which includes incurred claims (payer-paid), member-cost-sharing, and non-claims-based payments for mental health and substance use disorder services.
- **Total Health Expenditures:** Total medical and prescription drug spending for services that were not classified as behavioral health.
- **Member Months (annual):** The number of members participating in a plan over the specified period of time expressed in months of membership.
- **Mental Health Member Months (annual):** The number of members participating in a plan over the specified period of time expressed in member months, who had a Mental Health principal diagnosis at any point during the reporting year.
- **Substance Use Disorder Member Months (annual):** The number of members participating in a plan over the specified period of time expressed in member months, who had a substance use disorder principle diagnosis at any point during the reporting year.
- **Member Cost-Sharing:** Total member cost-sharing/member paid amounts for service category spending.
- **Age Group Behavioral Health Expenditures:** Expenditures classified as behavioral health for members 0-17, 18-64, and 65+ attributed to a provider organization.

## Data Year(s)

Calendar Years 2021 and 2022

## Data Submitters

CHIA collected summarized data on expenditures and enrollment from the following payers:

**Table TA-1: List of Payers Reporting 2021-2022 Behavioral Health Data**

Payer	Data Type
Aetna Health Insurance Company (Aetna)	Commercial full and partial-claims; Medicare Advantage
Blue Cross Blue Shield of Massachusetts (BCBSMA)	Commercial full and partial-claims; Medicare Advantage
Commonwealth Care Alliance (CCA)	OneCare; SCO
CIGNA Health and Life Insurance Company (Cigna)	Commercial full and partial-claims
Fallon Health (Fallon)	Commercial full and partial-claims; Medicaid (e.g. ACO-A, MCO); Medicare Advantage; PACE; SCO
Harvard Pilgrim Health Care (HPHC)	Commercial full and partial-claims; Medicare Advantage
Health New England (HNE)	Commercial full-claims; Medicaid (e.g. ACO-A, MCO); Medicare Advantage
Health Plans, Inc. (HPI)	Commercial full and partial-claims
Mass General Brigham Health Plan (MGBHP) (formerly AllWays)	Commercial full and partial-claims; Medicaid (e.g. ACO-A, MCO)
MassHealth	Fee-for-service (excluding FFS Duals, FFS TPL, FFS Limited), MCO/ACO-A, ACO-B, and PCC program types.
Tufts Public Plans – (THPP)	Commercial full-claims; Medicaid (e.g. ACO-A, MCO); OneCare
Tufts Health Plan (THP)	Commercial full and partial-claims
Tufts Medicare Advantage	Medicare Advantage
UniCare Health Insurance Company (UniCare) <sup>§</sup>	Commercial partial-claims
United Healthcare Insurance Company (United)	Commercial full and partial-claims
United Medicare Advantage	Medicare Advantage
United Senior Care Options (SCO)	SCO
WellSense (formerly BMC HealthNet)	Commercial full-claims; Medicaid (e.g. ACO-A, MCO)

---

## Methods

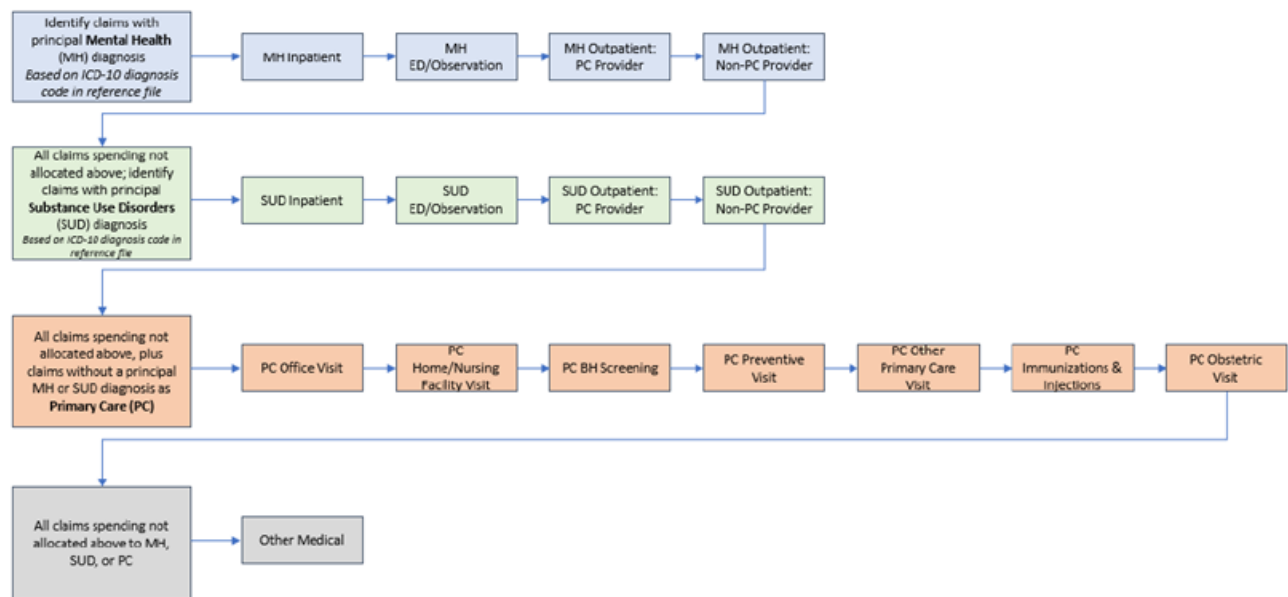
To classify expenditures as mental health and substance use disorder, data submitters followed instructions issued in the Primary Care and Behavioral Health Expenses Data Specification Manual published by CHIA.<sup>2</sup> Payers reported expenditures, including claims and non-claims based payments to providers, for their Massachusetts member populations for whom they provided primary, medical coverage. These expenditures were reported separately for *mutually-exclusive* mental health, substance use disorder, primary care, or other service categories using the detailed code sets provided by CHIA and in accordance with the logic outlined in **Figure A**. Mental health and substance use disorder expenditures were categorized based on combinations of Current Procedure Terminology (CPT) codes, Revenue codes, Place of Service (POS) codes and Provider Types. Expenditures were attributed to a member's managing provider group, as applicable, regardless of whether that provider group delivered the services.

In the Primary Care and Behavioral Health (PCBH) data submissions, insurers report their commercial business as Commercial Full Claims or Commercial Partial Claims. Commercial Partial Claims refer to commercial data that does not include all medical and subcarrier claims which indicate services that are “carved-out” such as pharmacy and/or behavioral health services. To capture a full view of the commercial market, CHIA implemented a revised methodology on grossing up partial claims to estimate behavioral health spending service percentages and pharmacy claims data for both behavioral health prescription drugs and all other prescription drugs.

To gross up commercial spending for services that payers carve-out, CHIA's revised methodology builds off the THCE methodology and leverages commercial partial member months by carved-out benefits in the TME-APM submission template defined in the [TME-APM technical appendix](#) for CY2021 through CY2022. This updated methodology requires commercial member months, pharmacy expenditures, and total expenditures in the TME-APM and PCBH data to be equal or close to equal. To verify that methodology was applied correctly, the PCBH gross up final pharmacy expenditures are compared to THCE final pharmacy expenditures.

For insurers who report pharmacy carve-outs for 100 percent of their commercial partial member months, PCBH commercial full claim pharmacy spending as a percent of commercial full total spending was used to estimate commercial partial pharmacy expenditures with PMPM values being calculated by utilizing spending and member months. If insurers reported pharmacy carve-outs for under 100 percent of their commercial partial member months, then pharmacy spending for commercial partial members where pharmacy was not carved out was used to account for those reported carved out pharmacy services. An additional step is included in this methodology to identify the distribution of new pharmacy spending to mental health (MH Rx), substance use disorder (SUD Rx), and other prescription (Other Rx) drug spending which includes the use of the commercial full population to estimate the allocation of new pharmacy dollars in ‘mental health prescription drug’ and ‘substance use disorder prescription drug’ and ‘other prescription drug’ categories.

**Figure A – Behavioral Health Classification Methodology:**



## Behavioral Health Prescription Drug Classification

A reference table of all National Drug Codes (NDC) is included in Appendix B<sup>2</sup> of CHIAs Primary Care and Behavioral Health data specifications. Payers use this list as a reference table in conjunction with methodology and coding logic outlined in Appendixes C and D of CHIAs PCBH data specification manual.

- **Mental Health Prescription Drugs:** All payments made for prescription drugs prescribed to address mental health needs, based on the specified set of National Drug Codes (NDC) listed in Appendix B.
- **Substance Use Disorder (SUD) Prescription Drugs:** All payments made for prescription drugs prescribed to address SUD needs, based on the specified set of National Drug Codes (NDC) listed in Appendix B.
- **Other Prescription Drugs:** All other payments made for prescription drugs not previously categorized as mental health or substance use disorders.

## Notes

<sup>1</sup> Chapter 177 of the Acts of 2022: An Act Addressing Barriers to Care for Mental Health. Available at

<https://malegislature.gov/Laws/SessionLaws/Acts/2022/Chapter177>

<sup>2</sup> Primary Care and Behavioral Health Expenses Data Reporting Resources. Available from: <https://www.chiamass.gov/payer-data-reporting-primary-and-behavioral-health-care-expenditures/>

# Behavioral Health Hospital Utilization

## Introduction

### Overview

For this report, the Hospital Inpatient Discharge Databases (HIDD) and Emergency Department Databases (EDD) of CHIA's Acute Hospital Case Mix Databases were used as the data source for reporting on behavioral health utilization in acute hospitals. The HIDD and EDD are visit-level files including patient socio-demographics, diagnostic information, treatment and service information, and hospital charges. They include only discharges or visits at acute hospitals and do not include data from private psychiatric hospitals, substance abuse facilities, or Department of Mental Health hospitals. The data are submitted to CHIA quarterly by all Massachusetts acute care hospitals and undergo a cleaning and verification process at CHIA that includes the feedback of verification reports to hospitals for confirmation of their information. Once quarterly data have been processed and verified, CHIA produces and makes available annual files. For general information about CHIA's Case Mix Databases, please see the [Overview of the Massachusetts Acute Hospital Case Mix Databases](#) and additional information about the Case Mix data on [CHIA's website](#).

### Hospital Inpatient Discharge Database (HIDD)

This data source is used for reporting on acute hospital inpatient discharges. Data from the HIDD for Federal Fiscal Year (FFY) 2023 (October 2022 to June 2023) are not considered final and are subject to change. Please see the [CHIA website](#) for the most up-to-date information on inpatient utilization.

### Emergency Department Databases (EDD)

This data source was used for reporting on treat-and-release emergency department (ED) visits in acute hospitals. Treat-and-release ED visits are those ED visits not resulting in an inpatient admission or outpatient observation stay; they represented approximately 75-80% of all ED visits at acute hospitals in the Commonwealth for data years in this report. Data from the EDD for FFY 2023 (October 2022 to June 2023) are not considered final and are subject to change. Please see the [CHIA website](#) for the most up-to-date information on emergency department utilization.

### Behavioral Health Inpatient Database (BHID)

Starting in fiscal year 2018, data are from 13 non-acute psychiatric hospitals and facilities that are required to submit data to CHIA on a quarterly basis. Certain hospitals are exempt from submitting if they a) had too few admissions, b) are considered part of an acute care hospital or c) are considered a chronic care or rehabilitation hospital. Hospitals controlled by the Department of Mental Health, namely Cape Cod & Islands Community Mental Health Center, Corrigan Mental Health Center, Solomon Carter Fuller Mental Health Center, Taunton State Hospital and Worcester State Hospital are not included in these data. These data are preliminary pending hospital verification reports and CHIA data processing. For more information, please see <https://www.chiamass.gov/behavioral-health-facilities-case-mix-data/>.

## Data Categorizations and Groupings

### Age Group

Patient age in years was calculated from the date of the inpatient admission and the patient date of birth. Patients were grouped by age on the date of admission into three groups: 2-17 years, 18-64 years, and 65 years and older. Patients aged less than 2 years and patients missing age were excluded from analyses of behavioral health conditions for these data sources.

### Behavioral Health

Inpatient discharges and treat-and-release ED visits were categorized into clinical meaningful independent behavioral health categories based on the listed primary and secondary diagnosis codes using the Clinical Classifications Software Refined (CCSR) for ICD-10-CM diagnoses.[1] The CCSR for ICD-10-CM diagnoses was developed by Agency for Healthcare Research and Quality (AHRQ) and aggregates over 70,000 ICD-10-CM diagnosis codes into over 530 clinically meaningful categories, organized across 21 body systems. This report uses CCSR v. 2023.1.

Behavioral health conditions are classified as mental health or substance use based on the conditions and CCSR categories below:

**Table 1. CCSR Categories Associated with Behavioral Health**

OVERALL CATEGORY	DIAGNOSIS CATEGORY	CCSR CATEGORIES	CCSR DESCRIPTION
Mental Health	Mood disorders	MBD002	Depressive disorders
		MBD003	Bipolar and related disorders
		MBD004	Other specified and unspecified mood disorders
	Anxiety disorders	MBD005	Anxiety and fear-related disorders
		MBD006	Obsessive-compulsive and related disorders
	Adjustment disorders	MBD007	Trauma and stressor-related disorders
	Intentional self-harm, suicidal ideation, and suicide attempts	MBD012	Suicidal ideation, attempt, and intentional self-harm
		MBD027	Suicide attempt or intentional self-harm, subsequent encounter
	Schizophrenia and other psychotic disorders	MBD001	Schizophrenia and other psychotic disorders
	Personality disorders	MBD009	Personality disorders
	Impulse control disorders not elsewhere classified	MBD008	Disruptive, impulse-control and conduct disorders
	Miscellaneous mental health conditions	MBD010	Feeding and eating disorders
		MBD011	Somatic disorders

		<b>MBD013</b>	Miscellaneous mental and behavioral disorders and conditions
<b>Substance Use</b>	Alcohol-related disorders	<b>MBD017</b>	Alcohol-related disorders
	Cannabis-related disorders	<b>MBD019</b>	Cannabis-related disorders
		<b>MBD030</b>	Cannabis-related disorders, subsequent encounter
	Opioids-related disorders	<b>MBD018</b>	Opioid-related disorders
		<b>MBD028</b>	Opioid-related disorders, subsequent encounter
	Cocaine-related disorders	<b>MBD021*</b>	Stimulant-related disorders
		<b>MBD029*</b>	Stimulant-related disorders, subsequent encounter
		*Only including those related to cocaine	
	Sedatives-related disorders	<b>MBD020</b>	Sedative-related disorders
		<b>MBD032</b>	Sedative-related disorders, subsequent encounter
	Other Stimulant-related disorders	<b>MBD021*</b>	Stimulant-related disorders
		<b>MBD029*</b>	Stimulant-related disorders, subsequent encounter
		*Except those related to cocaine	
	Hallucinogens-related disorders	<b>MBD022</b>	Hallucinogen-related disorders
		<b>MBD031</b>	Hallucinogen-related disorders; subsequent encounter
	Miscellaneous substance-related disorders	<b>MBD023</b>	Inhalant-related disorders
		<b>MBD025</b>	Other specified substance-related disorders
		<b>MBD033</b>	Inhalant-related disorders, subsequent encounter

Additionally, ICD-10-CM diagnoses in CCSR categories MBD026 (Mental and substance use disorders in remission) and MBD034 (Mental and substance use disorders; sequela) were manually associated with the diagnosis categories listed above. See Appendix A for a complete list of ICD-10-CM codes from these CCSR categories and their classifications.

Some ICD-10-CM diagnosis codes are associated with more than one CCSR category, and therefore may be classified under multiple behavioral health conditions. For reporting on detailed behavioral health condition categories, these diagnosis codes may be counted toward multiple categories. For reporting on trends in total behavioral health conditions, mental health conditions, and substance use conditions, discharges were counted only once. The classification as either mental health, substance use, or neither was performed as follows:

1. For diagnosis codes with only one associated behavioral health CCSR category, this category was used.
2. For diagnosis codes associated with multiple behavioral health CCSR categories, the default inpatient CCSR category was used for reporting on inpatient discharges and the default outpatient CCSR category was used for reporting on treat-and-release emergency department visits.

Only patients aged 2 and older were included for behavioral health analyses based on the HIDD and EDD data sources. For privacy reasons, totals by specific behavioral health condition, age group, and data-year were suppressed if the group had fewer than 11 discharges/visits.

---

## Notes

[1] Clinical Classifications Software Refined (CCSR) for ICD-10-CM. October 2023. Healthcare Cost and Utilization Project (HCUP). Agency for Healthcare Research and Quality, Rockville, MD. Available from <https://www.hcupus.ahrq.gov/toolssoftware/ccsr/dxccsr.jsp>

## Appendix A. CCSR Category MBD026 and MBD034 Behavioral Health Classification

CCSR CATEGORY	ICD-10 CODE	ICD-10 CODE DESCRIPTION	OVERALL BH CATEGORY	BH DIAGNOSIS CATEGORY
MBD026	F1011	Alcohol abuse, in remission	Substance Use	Alcohol
MBD026	F1021	Alcohol dependence, in remission	Substance Use	Alcohol
MBD026	F1111	Opioid abuse, in remission	Substance Use	Opioids
MBD026	F1121	Opioid dependence, in remission	Substance Use	Opioids
MBD026	F1211	Cannabis abuse, in remission	Substance Use	Cannabis
MBD026	F1221	Cannabis dependence, in remission	Substance Use	Cannabis
MBD026	F1311	Sedative, hypnotic or anxiolytic abuse, in remission	Substance Use	Sedatives
MBD026	F1321	Sedative, hypnotic or anxiolytic dependence, in remission	Substance Use	Sedatives
MBD026	F1411	Cocaine abuse, in remission	Substance Use	Cocaine
MBD026	F1421	Cocaine dependence, in remission	Substance Use	Cocaine
MBD026	F1511	Other stimulant abuse, in remission	Substance Use	Stimulants
MBD026	F1521	Other stimulant dependence, in remission	Substance Use	Stimulants
MBD026	F1611	Hallucinogen abuse, in remission	Substance Use	Hallucinogens
MBD026	F1621	Hallucinogen dependence, in remission	Substance Use	Hallucinogens
MBD026	F1811	Inhalant abuse, in remission	Substance Use	Other Substance Use
MBD026	F1821	Inhalant dependence, in remission	Substance Use	Other Substance Use
MBD026	F1911	Other psychoactive substance abuse, in remission	Substance Use	Other Substance Use
MBD026	F1921	Other psychoactive substance dependence, in remission	Substance Use	Other Substance Use
MBD026	F304	Manic episode in full remission	Mental Health	Mood
MBD026	F3170	Bipolar disorder, currently in remission, most recent episode unspecified	Mental Health	Mood
MBD026	F3172	Bipolar disorder, in full remission, most recent episode hypomanic	Mental Health	Mood
MBD026	F3174	Bipolar disorder, in full remission, most recent episode manic	Mental Health	Mood
MBD026	F3176	Bipolar disorder, in full remission, most recent episode depressed	Mental Health	Mood
MBD026	F3178	Bipolar disorder, in full remission, most recent episode mixed	Mental Health	Mood
MBD026	F325	Major depressive disorder, single episode, in full remission	Mental Health	Mood
MBD026	F3340	Major depressive disorder, recurrent, in remission, unspecified	Mental Health	Mood

CCSR CATEGORY	ICD-10 CODE	ICD-10 CODE DESCRIPTION	OVERALL BH CATEGORY	BH DIAGNOSIS CATEGORY
MBD026	F3342	Major depressive disorder, recurrent, in full remission	Mental Health	Mood
MBD034	T1491XS	Suicide attempt, sequela	Mental Health	Suicide
MBD034	T360X2S	Poisoning by penicillins, intentional self-harm, sequela	Mental Health	Suicide
MBD034	T361X2S	Poisoning by cephalosporins and other beta-lactam antibiotics, intentional self-harm, sequela	Mental Health	Suicide
MBD034	T362X2S	Poisoning by chloramphenicol group, intentional self-harm, sequela	Mental Health	Suicide
MBD034	T363X2S	Poisoning by macrolides, intentional self-harm, sequela	Mental Health	Suicide
MBD034	T364X2S	Poisoning by tetracyclines, intentional self-harm, sequela	Mental Health	Suicide
MBD034	T365X2S	Poisoning by aminoglycosides, intentional self-harm, sequela	Mental Health	Suicide
MBD034	T366X2S	Poisoning by rifampicins, intentional self-harm, sequela	Mental Health	Suicide
MBD034	T367X2S	Poisoning by antifungal antibiotics, systemically used, intentional self-harm, sequela	Mental Health	Suicide
MBD034	T368X2S	Poisoning by other systemic antibiotics, intentional self-harm, sequela	Mental Health	Suicide
MBD034	T3692XS	Poisoning by unspecified systemic antibiotic, intentional self-harm, sequela	Mental Health	Suicide
MBD034	T370X2S	Poisoning by sulfonamides, intentional self-harm, sequela	Mental Health	Suicide
MBD034	T371X2S	Poisoning by antimycobacterial drugs, intentional self-harm, sequela	Mental Health	Suicide
MBD034	T372X2S	Poisoning by antimalarials and drugs acting on other blood protozoa, intentional self-harm, sequela	Mental Health	Suicide
MBD034	T373X2S	Poisoning by other antiprotozoal drugs, intentional self-harm, sequela	Mental Health	Suicide
MBD034	T374X2S	Poisoning by anthelmintics, intentional self-harm, sequela	Mental Health	Suicide
MBD034	T375X2S	Poisoning by antiviral drugs, intentional self-harm, sequela	Mental Health	Suicide
MBD034	T378X2S	Poisoning by other specified systemic anti-infectives and antiparasitics, intentional self-harm, sequela	Mental Health	Suicide
MBD034	T3792XS	Poisoning by unspecified systemic anti-infective and antiparasitics, intentional self-harm, sequela	Mental Health	Suicide
MBD034	T380X2S	Poisoning by glucocorticoids and synthetic analogues, intentional self-harm, sequela	Mental Health	Suicide
MBD034	T381X2S	Poisoning by thyroid hormones and substitutes, intentional self-harm, sequela	Mental Health	Suicide

CCSR CATEGORY	ICD-10 CODE	ICD-10 CODE DESCRIPTION	OVERALL BH CATEGORY	BH DIAGNOSIS CATEGORY
MBD034	T382X2S	Poisoning by antithyroid drugs, intentional self-harm, sequela	Mental Health	Suicide
MBD034	T383X2S	Poisoning by insulin and oral hypoglycemic [antidiabetic] drugs, intentional self-harm, sequela	Mental Health	Suicide
MBD034	T384X2S	Poisoning by oral contraceptives, intentional self-harm, sequela	Mental Health	Suicide
MBD034	T385X2S	Poisoning by other estrogens and progestogens, intentional self-harm, sequela	Mental Health	Suicide
MBD034	T386X2S	Poisoning by antigonadotrophins, antiestrogens, antiandrogens, not elsewhere classified, intentional self-harm, sequela	Mental Health	Suicide
MBD034	T387X2S	Poisoning by androgens and anabolic congeners, intentional self-harm, sequela	Mental Health	Suicide
MBD034	T38802S	Poisoning by unspecified hormones and synthetic substitutes, intentional self-harm, sequela	Mental Health	Suicide
MBD034	T38812S	Poisoning by anterior pituitary [adenohypophyseal] hormones, intentional self-harm, sequela	Mental Health	Suicide
MBD034	T38892S	Poisoning by other hormones and synthetic substitutes, intentional self-harm, sequela	Mental Health	Suicide
MBD034	T38902S	Poisoning by unspecified hormone antagonists, intentional self-harm, sequela	Mental Health	Suicide
MBD034	T38992S	Poisoning by other hormone antagonists, intentional self-harm, sequela	Mental Health	Suicide
MBD034	T39012S	Poisoning by aspirin, intentional self-harm, sequela	Mental Health	Suicide
MBD034	T39092S	Poisoning by salicylates, intentional self-harm, sequela	Mental Health	Suicide
MBD034	T391X2S	Poisoning by 4-Aminophenol derivatives, intentional self-harm, sequela	Mental Health	Suicide
MBD034	T392X2S	Poisoning by pyrazolone derivatives, intentional self-harm, sequela	Mental Health	Suicide
MBD034	T39312S	Poisoning by propionic acid derivatives, intentional self-harm, sequela	Mental Health	Suicide
MBD034	T39392S	Poisoning by other nonsteroidal anti-inflammatory drugs [NSAID], intentional self-harm, sequela	Mental Health	Suicide
MBD034	T394X2S	Poisoning by antirheumatics, not elsewhere classified, intentional self-harm, sequela	Mental Health	Suicide
MBD034	T398X2S	Poisoning by other nonopioid analgesics and antipyretics, not elsewhere classified, intentional self-harm, sequela	Mental Health	Suicide
MBD034	T3992XS	Poisoning by unspecified nonopioid analgesic, antipyretic and antirheumatic, intentional self-harm, sequela	Mental Health	Suicide

CCSR CATEGORY	ICD-10 CODE	ICD-10 CODE DESCRIPTION	OVERALL BH CATEGORY	BH DIAGNOSIS CATEGORY
MBD034	T400X1S	Poisoning by opium, accidental (unintentional), sequela	Substance Use	Opioids
MBD034	T400X2S	Poisoning by opium, intentional self-harm, sequela	Mental Health	Suicide
MBD034	T400X3S	Poisoning by opium, assault, sequela	Substance Use	Opioids
MBD034	T400X4S	Poisoning by opium, undetermined, sequela	Substance Use	Opioids
MBD034	T400X5S	Adverse effect of opium, sequela	Substance Use	Opioids
MBD034	T401X1S	Poisoning by heroin, accidental (unintentional), sequela	Substance Use	Opioids
MBD034	T401X2S	Poisoning by heroin, intentional self-harm, sequela	Mental Health	Suicide
MBD034	T401X3S	Poisoning by heroin, assault, sequela	Substance Use	Opioids
MBD034	T401X4S	Poisoning by heroin, undetermined, sequela	Substance Use	Opioids
MBD034	T402X1S	Poisoning by other opioids, accidental (unintentional), sequela	Substance Use	Opioids
MBD034	T402X2S	Poisoning by other opioids, intentional self-harm, sequela	Mental Health	Suicide
MBD034	T402X3S	Poisoning by other opioids, assault, sequela	Substance Use	Opioids
MBD034	T402X4S	Poisoning by other opioids, undetermined, sequela	Substance Use	Opioids
MBD034	T402X5S	Adverse effect of other opioids, sequela	Substance Use	Opioids
MBD034	T403X1S	Poisoning by methadone, accidental (unintentional), sequela	Substance Use	Opioids
MBD034	T403X2S	Poisoning by methadone, intentional self-harm, sequela	Mental Health	Suicide
MBD034	T403X3S	Poisoning by methadone, assault, sequela	Substance Use	Opioids
MBD034	T403X4S	Poisoning by methadone, undetermined, sequela	Substance Use	Opioids
MBD034	T403X5S	Adverse effect of methadone, sequela	Substance Use	Opioids
MBD034	T40411S	Poisoning by fentanyl or fentanyl analogs, accidental (unintentional), sequela	Substance Use	Opioids
MBD034	T40412S	Poisoning by fentanyl or fentanyl analogs, intentional self-harm, sequela	Mental Health	Suicide
MBD034	T40413S	Poisoning by fentanyl or fentanyl analogs, assault, sequela	Substance Use	Opioids
MBD034	T40414S	Poisoning by fentanyl or fentanyl analogs, undetermined, sequela	Substance Use	Opioids
MBD034	T40415S	Adverse effect of fentanyl or fentanyl analogs, sequela	Substance Use	Opioids
MBD034	T40421S	Poisoning by tramadol, accidental (unintentional), sequela	Substance Use	Opioids
MBD034	T40422S	Poisoning by tramadol, intentional self-harm, sequela	Mental Health	Suicide
MBD034	T40423S	Poisoning by tramadol, assault, sequela	Substance Use	Opioids
MBD034	T40424S	Poisoning by tramadol, undetermined, sequela	Substance Use	Opioids
MBD034	T40425S	Adverse effect of tramadol, sequela	Substance Use	Opioids

CCSR CATEGORY	ICD-10 CODE	ICD-10 CODE DESCRIPTION	OVERALL BH CATEGORY	BH DIAGNOSIS CATEGORY
MBD034	T40491S	Poisoning by other synthetic narcotics, accidental (unintentional), sequela	Substance Use	Opioids
MBD034	T40492S	Poisoning by other synthetic narcotics, intentional self-harm, sequela	Mental Health	Suicide
MBD034	T40493S	Poisoning by other synthetic narcotics, assault, sequela	Substance Use	Opioids
MBD034	T40494S	Poisoning by other synthetic narcotics, undetermined, sequela	Substance Use	Opioids
MBD034	T40495S	Adverse effect of other synthetic narcotics, sequela	Substance Use	Opioids
MBD034	T404X1S	Poisoning by other synthetic narcotics, accidental (unintentional), sequela	Substance Use	Opioids
MBD034	T404X2S	Poisoning by other synthetic narcotics, intentional self-harm, sequela	Mental Health	Suicide
MBD034	T404X3S	Poisoning by other synthetic narcotics, assault, sequela	Substance Use	Opioids
MBD034	T404X4S	Poisoning by other synthetic narcotics, undetermined, sequela	Substance Use	Opioids
MBD034	T404X5S	Adverse effect of other synthetic narcotics, sequela	Substance Use	Opioids
MBD034	T405X1S	Poisoning by cocaine, accidental (unintentional), sequela	Substance Use	Cocaine
MBD034	T405X2S	Poisoning by cocaine, intentional self-harm, sequela	Mental Health	Suicide
MBD034	T405X3S	Poisoning by cocaine, assault, sequela	Substance Use	Cocaine
MBD034	T405X4S	Poisoning by cocaine, undetermined, sequela	Substance Use	Cocaine
MBD034	T405X5S	Adverse effect of cocaine, sequela	Substance Use	Cocaine
MBD034	T40601S	Poisoning by unspecified narcotics, accidental (unintentional), sequela	Substance Use	Opioids
MBD034	T40602S	Poisoning by unspecified narcotics, intentional self-harm, sequela	Mental Health	Suicide
MBD034	T40603S	Poisoning by unspecified narcotics, assault, sequela	Substance Use	Opioids
MBD034	T40604S	Poisoning by unspecified narcotics, undetermined, sequela	Substance Use	Opioids
MBD034	T40605S	Adverse effect of unspecified narcotics, sequela	Substance Use	Opioids
MBD034	T40691S	Poisoning by other narcotics, accidental (unintentional), sequela	Substance Use	Opioids
MBD034	T40692S	Poisoning by other narcotics, intentional self-harm, sequela	Mental Health	Suicide
MBD034	T40693S	Poisoning by other narcotics, assault, sequela	Substance Use	Opioids
MBD034	T40694S	Poisoning by other narcotics, undetermined, sequela	Substance Use	Opioids
MBD034	T40695S	Adverse effect of other narcotics, sequela	Substance Use	Opioids

CCSR CATEGORY	ICD-10 CODE	ICD-10 CODE DESCRIPTION	OVERALL BH CATEGORY	BH DIAGNOSIS CATEGORY
MBD034	T407X1S	Poisoning by cannabis (derivatives), accidental (unintentional), sequela	Substance Use	Cannabis
MBD034	T407X2S	Poisoning by cannabis (derivatives), intentional self-harm, sequela	Mental Health	Suicide
MBD034	T407X3S	Poisoning by cannabis (derivatives), assault, sequela	Substance Use	Cannabis
MBD034	T407X4S	Poisoning by cannabis (derivatives), undetermined, sequela	Substance Use	Cannabis
MBD034	T407X5S	Adverse effect of cannabis (derivatives), sequela	Substance Use	Cannabis
MBD034	T40711S	Poisoning by cannabis, accidental (unintentional), sequela	Substance Use	Cannabis
MBD034	T40712S	Poisoning by cannabis, intentional self-harm, sequela	Substance Use	Cannabis
MBD034	T40712S	Poisoning by cannabis, intentional self-harm, sequela	Mental Health	Suicide
MBD034	T40713S	Poisoning by cannabis, assault, sequela	Substance Use	Cannabis
MBD034	T40714S	Poisoning by cannabis, undetermined, sequela	Substance Use	Cannabis
MBD034	T40721S	Poisoning by synthetic cannabinoids, accidental (unintentional), sequela	Substance Use	Cannabis
MBD034	T40722S	Poisoning by synthetic cannabinoids, intentional self-harm, sequela	Mental Health	Suicide
MBD034	T40722S	Poisoning by synthetic cannabinoids, intentional self-harm, sequela	Substance Use	Cannabis
MBD034	T40723S	Poisoning by synthetic cannabinoids, assault, sequela	Substance Use	Cannabis
MBD034	T40724S	Poisoning by synthetic cannabinoids, undetermined, sequela	Substance Use	Cannabis
MBD034	T408X1S	Poisoning by lysergide [LSD], accidental (unintentional), sequela	Substance Use	Hallucinogens
MBD034	T408X2S	Poisoning by lysergide [LSD], intentional self-harm, sequela	Mental Health	Suicide
MBD034	T408X3S	Poisoning by lysergide [LSD], assault, sequela	Substance Use	Hallucinogens
MBD034	T408X4S	Poisoning by lysergide [LSD], undetermined, sequela	Substance Use	Hallucinogens
MBD034	T40901S	Poisoning by unspecified psychodysleptics [hallucinogens], accidental (unintentional), sequela	Substance Use	Hallucinogens
MBD034	T40902S	Poisoning by unspecified psychodysleptics [hallucinogens], intentional self-harm, sequela	Mental Health	Suicide
MBD034	T40903S	Poisoning by unspecified psychodysleptics [hallucinogens], assault, sequela	Substance Use	Hallucinogens
MBD034	T40904S	Poisoning by unspecified psychodysleptics [hallucinogens], undetermined, sequela	Substance Use	Hallucinogens

CCSR CATEGORY	ICD-10 CODE	ICD-10 CODE DESCRIPTION	OVERALL BH CATEGORY	BH DIAGNOSIS CATEGORY
MBD034	T40905S	Adverse effect of unspecified psychodysleptics [hallucinogens], sequela	Substance Use	Hallucinogens
MBD034	T40991S	Poisoning by other psychodysleptics [hallucinogens], accidental (unintentional), sequela	Substance Use	Hallucinogens
MBD034	T40992S	Poisoning by other psychodysleptics [hallucinogens], intentional self-harm, sequela	Mental Health	Suicide
MBD034	T40993S	Poisoning by other psychodysleptics [hallucinogens], assault, sequela	Substance Use	Hallucinogens
MBD034	T40994S	Poisoning by other psychodysleptics [hallucinogens], undetermined, sequela	Substance Use	Hallucinogens
MBD034	T40995S	Adverse effect of other psychodysleptics [hallucinogens], sequela	Substance Use	Hallucinogens
MBD034	T410X1S	Poisoning by inhaled anesthetics, accidental (unintentional), sequela	Substance Use	Other Substance Use
MBD034	T410X2S	Poisoning by inhaled anesthetics, intentional self-harm, sequela	Mental Health	Suicide
MBD034	T410X3S	Poisoning by inhaled anesthetics, assault, sequela	Substance Use	Other Substance Use
MBD034	T410X4S	Poisoning by inhaled anesthetics, undetermined, sequela	Substance Use	Other Substance Use
MBD034	T410X5S	Adverse effect of inhaled anesthetics, sequela	Substance Use	Other Substance Use
MBD034	T411X2S	Poisoning by intravenous anesthetics, intentional self-harm, sequela	Mental Health	Suicide
MBD034	T41202S	Poisoning by unspecified general anesthetics, intentional self-harm, sequela	Mental Health	Suicide
MBD034	T41292S	Poisoning by other general anesthetics, intentional self-harm, sequela	Mental Health	Suicide
MBD034	T413X2S	Poisoning by local anesthetics, intentional self-harm, sequela	Mental Health	Suicide
MBD034	T4142XS	Poisoning by unspecified anesthetic, intentional self-harm, sequela	Mental Health	Suicide
MBD034	T415X2S	Poisoning by therapeutic gases, intentional self-harm, sequela	Mental Health	Suicide
MBD034	T420X2S	Poisoning by hydantoin derivatives, intentional self-harm, sequela	Mental Health	Suicide
MBD034	T422X2S	Poisoning by succinimides and oxazolidinediones, intentional self-harm, sequela	Mental Health	Suicide
MBD034	T423X2S	Poisoning by barbiturates, intentional self-harm, sequela	Mental Health	Suicide
MBD034	T424X2S	Poisoning by benzodiazepines, intentional self-harm, sequela	Mental Health	Suicide
MBD034	T425X2S	Poisoning by mixed antiepileptics, intentional self-harm, sequela	Mental Health	Suicide

CCSR CATEGORY	ICD-10 CODE	ICD-10 CODE DESCRIPTION	OVERALL BH CATEGORY	BH DIAGNOSIS CATEGORY
MBD034	T426X1S	Poisoning by other antiepileptic and sedative-hypnotic drugs, accidental (unintentional), sequela	Substance Use	Sedatives
MBD034	T426X2S	Poisoning by other antiepileptic and sedative-hypnotic drugs, intentional self-harm, sequela	Mental Health	Suicide
MBD034	T426X3S	Poisoning by other antiepileptic and sedative-hypnotic drugs, assault, sequela	Substance Use	Sedatives
MBD034	T426X4S	Poisoning by other antiepileptic and sedative-hypnotic drugs, undetermined, sequela	Substance Use	Sedatives
MBD034	T426X5S	Adverse effect of other antiepileptic and sedative-hypnotic drugs, sequela	Substance Use	Sedatives
MBD034	T4271XS	Poisoning by unspecified antiepileptic and sedative-hypnotic drugs, accidental (unintentional), sequela	Substance Use	Sedatives
MBD034	T4272XS	Poisoning by unspecified antiepileptic and sedative-hypnotic drugs, intentional self-harm, sequela	Mental Health	Suicide
MBD034	T4273XS	Poisoning by unspecified antiepileptic and sedative-hypnotic drugs, assault, sequela	Substance Use	Sedatives
MBD034	T4274XS	Poisoning by unspecified antiepileptic and sedative-hypnotic drugs, undetermined, sequela	Substance Use	Sedatives
MBD034	T4275XS	Adverse effect of unspecified antiepileptic and sedative-hypnotic drugs, sequela	Substance Use	Sedatives
MBD034	T428X2S	Poisoning by antiparkinsonism drugs and other central muscle-tone depressants, intentional self-harm, sequela	Mental Health	Suicide
MBD034	T43012S	Poisoning by tricyclic antidepressants, intentional self-harm, sequela	Mental Health	Suicide
MBD034	T43022S	Poisoning by tetracyclic antidepressants, intentional self-harm, sequela	Mental Health	Suicide
MBD034	T431X2S	Poisoning by monoamine-oxidase-inhibitor antidepressants, intentional self-harm, sequela	Mental Health	Suicide
MBD034	T43202S	Poisoning by unspecified antidepressants, intentional self-harm, sequela	Mental Health	Suicide
MBD034	T43205S	Adverse effect of unspecified antidepressants, sequela	Substance Use	Other Substance Use
MBD034	T43212S	Poisoning by selective serotonin and norepinephrine reuptake inhibitors, intentional self-harm, sequela	Mental Health	Suicide
MBD034	T43222S	Poisoning by selective serotonin reuptake inhibitors, intentional self-harm, sequela	Mental Health	Suicide
MBD034	T43292S	Poisoning by other antidepressants, intentional self-harm, sequela	Mental Health	Suicide
MBD034	T433X2S	Poisoning by phenothiazine antipsychotics and neuroleptics, intentional self-harm, sequela	Mental Health	Suicide
MBD034	T434X2S	Poisoning by butyrophenone and thiothixene neuroleptics, intentional self-harm, sequela	Mental Health	Suicide

CCSR CATEGORY	ICD-10 CODE	ICD-10 CODE DESCRIPTION	OVERALL BH CATEGORY	BH DIAGNOSIS CATEGORY
MBD034	T43502S	Poisoning by unspecified antipsychotics and neuroleptics, intentional self-harm, sequela	Mental Health	Suicide
MBD034	T43592S	Poisoning by other antipsychotics and neuroleptics, intentional self-harm, sequela	Mental Health	Suicide
MBD034	T43601S	Poisoning by unspecified psychostimulants, accidental (unintentional), sequela	Substance Use	Stimulants
MBD034	T43602S	Poisoning by unspecified psychostimulants, intentional self-harm, sequela	Mental Health	Suicide
MBD034	T43603S	Poisoning by unspecified psychostimulants, assault, sequela	Substance Use	Stimulants
MBD034	T43604S	Poisoning by unspecified psychostimulants, undetermined, sequela	Substance Use	Stimulants
MBD034	T43605S	Adverse effect of unspecified psychostimulants, sequela	Substance Use	Stimulants
MBD034	T43611S	Poisoning by caffeine, accidental (unintentional), sequela	Substance Use	Stimulants
MBD034	T43612S	Poisoning by caffeine, intentional self-harm, sequela	Mental Health	Suicide
MBD034	T43613S	Poisoning by caffeine, assault, sequela	Substance Use	Stimulants
MBD034	T43614S	Poisoning by caffeine, undetermined, sequela	Substance Use	Stimulants
MBD034	T43615S	Adverse effect of caffeine, sequela	Substance Use	Stimulants
MBD034	T43621S	Poisoning by amphetamines, accidental (unintentional), sequela	Substance Use	Stimulants
MBD034	T43622S	Poisoning by amphetamines, intentional self-harm, sequela	Mental Health	Suicide
MBD034	T43623S	Poisoning by amphetamines, assault, sequela	Substance Use	Stimulants
MBD034	T43624S	Poisoning by amphetamines, undetermined, sequela	Substance Use	Stimulants
MBD034	T43625S	Adverse effect of amphetamines, sequela	Substance Use	Stimulants
MBD034	T43631S	Poisoning by methylphenidate, accidental (unintentional), sequela	Substance Use	Stimulants
MBD034	T43632S	Poisoning by methylphenidate, intentional self-harm, sequela	Mental Health	Suicide
MBD034	T43633S	Poisoning by methylphenidate, assault, sequela	Substance Use	Stimulants
MBD034	T43634S	Poisoning by methylphenidate, undetermined, sequela	Substance Use	Stimulants
MBD034	T43635S	Adverse effect of methylphenidate, sequela	Substance Use	Stimulants
MBD034	T43641S	Poisoning by ecstasy, accidental (unintentional), sequela	Substance Use	Stimulants
MBD034	T43642S	Poisoning by ecstasy, intentional self-harm, sequela	Mental Health	Suicide
MBD034	T43643S	Poisoning by ecstasy, assault, sequela	Substance Use	Stimulants
MBD034	T43644S	Poisoning by ecstasy, undetermined, sequela	Substance Use	Stimulants
MBD034	T43691S	Poisoning by other psychostimulants, accidental (unintentional), sequela	Substance Use	Stimulants

CCSR CATEGORY	ICD-10 CODE	ICD-10 CODE DESCRIPTION	OVERALL BH CATEGORY	BH DIAGNOSIS CATEGORY
MBD034	T43692S	Poisoning by other psychostimulants, intentional self-harm, sequela	Mental Health	Suicide
MBD034	T43693S	Poisoning by other psychostimulants, assault, sequela	Substance Use	Stimulants
MBD034	T43694S	Poisoning by other psychostimulants, undetermined, sequela	Substance Use	Stimulants
MBD034	T43695S	Adverse effect of other psychostimulants, sequela	Substance Use	Stimulants
MBD034	T438X2S	Poisoning by other psychotropic drugs, intentional self-harm, sequela	Mental Health	Suicide
MBD034	T4392XS	Poisoning by unspecified psychotropic drug, intentional self-harm, sequela	Mental Health	Suicide
MBD034	T440X2S	Poisoning by anticholinesterase agents, intentional self-harm, sequela	Mental Health	Suicide
MBD034	T441X2S	Poisoning by other parasympathomimetics [cholinergics], intentional self-harm, sequela	Mental Health	Suicide
MBD034	T442X2S	Poisoning by ganglionic blocking drugs, intentional self-harm, sequela	Mental Health	Suicide
MBD034	T443X2S	Poisoning by other parasympatholytics [anticholinergics and antimuscarinics] and spasmolytics, intentional self-harm, sequela	Mental Health	Suicide
MBD034	T444X2S	Poisoning by predominantly alpha-adrenoreceptor agonists, intentional self-harm, sequela	Mental Health	Suicide
MBD034	T445X2S	Poisoning by predominantly beta-adrenoreceptor agonists, intentional self-harm, sequela	Mental Health	Suicide
MBD034	T446X2S	Poisoning by alpha-adrenoreceptor antagonists, intentional self-harm, sequela	Mental Health	Suicide
MBD034	T447X2S	Poisoning by beta-adrenoreceptor antagonists, intentional self-harm, sequela	Mental Health	Suicide
MBD034	T448X2S	Poisoning by centrally-acting and adrenergic-neuron-blocking agents, intentional self-harm, sequela	Mental Health	Suicide
MBD034	T44902S	Poisoning by unspecified drugs primarily affecting the autonomic nervous system, intentional self-harm, sequela	Mental Health	Suicide
MBD034	T44992S	Poisoning by other drug primarily affecting the autonomic nervous system, intentional self-harm, sequela	Mental Health	Suicide
MBD034	T450X2S	Poisoning by antiallergic and antiemetic drugs, intentional self-harm, sequela	Mental Health	Suicide
MBD034	T451X2S	Poisoning by antineoplastic and immunosuppressive drugs, intentional self-harm, sequela	Mental Health	Suicide
MBD034	T452X2S	Poisoning by vitamins, intentional self-harm, sequela	Mental Health	Suicide
MBD034	T453X2S	Poisoning by enzymes, intentional self-harm, sequela	Mental Health	Suicide

CCSR CATEGORY	ICD-10 CODE	ICD-10 CODE DESCRIPTION	OVERALL BH CATEGORY	BH DIAGNOSIS CATEGORY
MBD034	T454X2S	Poisoning by iron and its compounds, intentional self-harm, sequela	Mental Health	Suicide
MBD034	T45512S	Poisoning by anticoagulants, intentional self-harm, sequela	Mental Health	Suicide
MBD034	T45522S	Poisoning by antithrombotic drugs, intentional self-harm, sequela	Mental Health	Suicide
MBD034	T45602S	Poisoning by unspecified fibrinolysis-affecting drugs, intentional self-harm, sequela	Mental Health	Suicide
MBD034	T45612S	Poisoning by thrombolytic drug, intentional self-harm, sequela	Mental Health	Suicide
MBD034	T45622S	Poisoning by hemostatic drug, intentional self-harm, sequela	Mental Health	Suicide
MBD034	T45692S	Poisoning by other fibrinolysis-affecting drugs, intentional self-harm, sequela	Mental Health	Suicide
MBD034	T457X2S	Poisoning by anticoagulant antagonists, vitamin K and other coagulants, intentional self-harm, sequela	Mental Health	Suicide
MBD034	T458X2S	Poisoning by other primarily systemic and hematological agents, intentional self-harm, sequela	Mental Health	Suicide
MBD034	T4592XS	Poisoning by unspecified primarily systemic and hematological agent, intentional self-harm, sequela	Mental Health	Suicide
MBD034	T460X2S	Poisoning by cardiac-stimulant glycosides and drugs of similar action, intentional self-harm, sequela	Mental Health	Suicide
MBD034	T461X2S	Poisoning by calcium-channel blockers, intentional self-harm, sequela	Mental Health	Suicide
MBD034	T462X2S	Poisoning by other antidysrhythmic drugs, intentional self-harm, sequela	Mental Health	Suicide
MBD034	T463X2S	Poisoning by coronary vasodilators, intentional self-harm, sequela	Mental Health	Suicide
MBD034	T464X2S	Poisoning by angiotensin-converting-enzyme inhibitors, intentional self-harm, sequela	Mental Health	Suicide
MBD034	T465X2S	Poisoning by other antihypertensive drugs, intentional self-harm, sequela	Mental Health	Suicide
MBD034	T466X2S	Poisoning by antihyperlipidemic and antiarteriosclerotic drugs, intentional self-harm, sequela	Mental Health	Suicide
MBD034	T467X2S	Poisoning by peripheral vasodilators, intentional self-harm, sequela	Mental Health	Suicide
MBD034	T468X2S	Poisoning by antivaricose drugs, including sclerosing agents, intentional self-harm, sequela	Mental Health	Suicide
MBD034	T46902S	Poisoning by unspecified agents primarily affecting the cardiovascular system, intentional self-harm, sequela	Mental Health	Suicide

CCSR CATEGORY	ICD-10 CODE	ICD-10 CODE DESCRIPTION	OVERALL BH CATEGORY	BH DIAGNOSIS CATEGORY
MBD034	T46992S	Poisoning by other agents primarily affecting the cardiovascular system, intentional self-harm, sequela	Mental Health	Suicide
MBD034	T470X2S	Poisoning by histamine H2-receptor blockers, intentional self-harm, sequela	Mental Health	Suicide
MBD034	T471X2S	Poisoning by other antacids and anti-gastric-secretion drugs, intentional self-harm, sequela	Mental Health	Suicide
MBD034	T472X2S	Poisoning by stimulant laxatives, intentional self-harm, sequela	Mental Health	Suicide
MBD034	T473X2S	Poisoning by saline and osmotic laxatives, intentional self-harm, sequela	Mental Health	Suicide
MBD034	T474X2S	Poisoning by other laxatives, intentional self-harm, sequela	Mental Health	Suicide
MBD034	T475X2S	Poisoning by digestants, intentional self-harm, sequela	Mental Health	Suicide
MBD034	T476X2S	Poisoning by antidiarrheal drugs, intentional self-harm, sequela	Mental Health	Suicide
MBD034	T477X2S	Poisoning by emetics, intentional self-harm, sequela	Mental Health	Suicide
MBD034	T478X2S	Poisoning by other agents primarily affecting gastrointestinal system, intentional self-harm, sequela	Mental Health	Suicide
MBD034	T4792XS	Poisoning by unspecified agents primarily affecting the gastrointestinal system, intentional self-harm, sequela	Mental Health	Suicide
MBD034	T480X2S	Poisoning by oxytocic drugs, intentional self-harm, sequela	Mental Health	Suicide
MBD034	T481X2S	Poisoning by skeletal muscle relaxants [neuromuscular blocking agents], intentional self-harm, sequela	Mental Health	Suicide
MBD034	T48202S	Poisoning by unspecified drugs acting on muscles, intentional self-harm, sequela	Mental Health	Suicide
MBD034	T48292S	Poisoning by other drugs acting on muscles, intentional self-harm, sequela	Mental Health	Suicide
MBD034	T483X2S	Poisoning by antitussives, intentional self-harm, sequela	Mental Health	Suicide
MBD034	T484X2S	Poisoning by expectorants, intentional self-harm, sequela	Mental Health	Suicide
MBD034	T485X2S	Poisoning by other anti-common-cold drugs, intentional self-harm, sequela	Mental Health	Suicide
MBD034	T486X2S	Poisoning by antiasthmatics, intentional self-harm, sequela	Mental Health	Suicide
MBD034	T48902S	Poisoning by unspecified agents primarily acting on the respiratory system, intentional self-harm, sequela	Mental Health	Suicide
MBD034	T48992S	Poisoning by other agents primarily acting on the respiratory system, intentional self-harm, sequela	Mental Health	Suicide

CCSR CATEGORY	ICD-10 CODE	ICD-10 CODE DESCRIPTION	OVERALL BH CATEGORY	BH DIAGNOSIS CATEGORY
MBD034	T490X2S	Poisoning by local antifungal, anti-infective and anti-inflammatory drugs, intentional self-harm, sequela	Mental Health	Suicide
MBD034	T491X2S	Poisoning by antipruritics, intentional self-harm, sequela	Mental Health	Suicide
MBD034	T492X2S	Poisoning by local astringents and local detergents, intentional self-harm, sequela	Mental Health	Suicide
MBD034	T493X2S	Poisoning by emollients, demulcents and protectants, intentional self-harm, sequela	Mental Health	Suicide
MBD034	T494X2S	Poisoning by keratolytics, keratoplastics, and other hair treatment drugs and preparations, intentional self-harm, sequela	Mental Health	Suicide
MBD034	T495X2S	Poisoning by ophthalmological drugs and preparations, intentional self-harm, sequela	Mental Health	Suicide
MBD034	T496X2S	Poisoning by otorhinolaryngological drugs and preparations, intentional self-harm, sequela	Mental Health	Suicide
MBD034	T497X2S	Poisoning by dental drugs, topically applied, intentional self-harm, sequela	Mental Health	Suicide
MBD034	T498X2S	Poisoning by other topical agents, intentional self-harm, sequela	Mental Health	Suicide
MBD034	T4992XS	Poisoning by unspecified topical agent, intentional self-harm, sequela	Mental Health	Suicide
MBD034	T500X2S	Poisoning by mineralocorticoids and their antagonists, intentional self-harm, sequela	Mental Health	Suicide
MBD034	T501X2S	Poisoning by loop [high-ceiling] diuretics, intentional self-harm, sequela	Mental Health	Suicide
MBD034	T502X2S	Poisoning by carbonic-anhydrase inhibitors, benzothiadiazides and other diuretics, intentional self-harm, sequela	Mental Health	Suicide
MBD034	T503X2S	Poisoning by electrolytic, caloric and water-balance agents, intentional self-harm, sequela	Mental Health	Suicide
MBD034	T504X2S	Poisoning by drugs affecting uric acid metabolism, intentional self-harm, sequela	Mental Health	Suicide
MBD034	T505X2S	Poisoning by appetite depressants, intentional self-harm, sequela	Mental Health	Suicide
MBD034	T506X2S	Poisoning by antidotes and chelating agents, intentional self-harm, sequela	Mental Health	Suicide
MBD034	T507X2S	Poisoning by analeptics and opioid receptor antagonists, intentional self-harm, sequela	Mental Health	Suicide
MBD034	T508X2S	Poisoning by diagnostic agents, intentional self-harm, sequela	Mental Health	Suicide
MBD034	T50902S	Poisoning by unspecified drugs, medicaments and biological substances, intentional self-harm, sequela	Mental Health	Suicide
MBD034	T50912S	Poisoning by multiple unspecified drugs, medicaments and biological substances, intentional self-harm, sequela	Mental Health	Suicide

CCSR CATEGORY	ICD-10 CODE	ICD-10 CODE DESCRIPTION	OVERALL BH CATEGORY	BH DIAGNOSIS CATEGORY
MBD034	T50992S	Poisoning by other drugs, medicaments and biological substances, intentional self-harm, sequela	Mental Health	Suicide
MBD034	T50A12S	Poisoning by pertussis vaccine, including combinations with a pertussis component, intentional self-harm, sequela	Mental Health	Suicide
MBD034	T50A22S	Poisoning by mixed bacterial vaccines without a pertussis component, intentional self-harm, sequela	Mental Health	Suicide
MBD034	T50A92S	Poisoning by other bacterial vaccines, intentional self-harm, sequela	Mental Health	Suicide
MBD034	T50B12S	Poisoning by smallpox vaccines, intentional self-harm, sequela	Mental Health	Suicide
MBD034	T50B92S	Poisoning by other viral vaccines, intentional self-harm, sequela	Mental Health	Suicide
MBD034	T50Z12S	Poisoning by immunoglobulin, intentional self-harm, sequela	Mental Health	Suicide
MBD034	T50Z92S	Poisoning by other vaccines and biological substances, intentional self-harm, sequela	Mental Health	Suicide
MBD034	T510X2S	Toxic effect of ethanol, intentional self-harm, sequela	Mental Health	Suicide
MBD034	T511X2S	Toxic effect of methanol, intentional self-harm, sequela	Mental Health	Suicide
MBD034	T512X2S	Toxic effect of 2-Propanol, intentional self-harm, sequela	Mental Health	Suicide
MBD034	T513X2S	Toxic effect of fusel oil, intentional self-harm, sequela	Mental Health	Suicide
MBD034	T518X2S	Toxic effect of other alcohols, intentional self-harm, sequela	Mental Health	Suicide
MBD034	T5192XS	Toxic effect of unspecified alcohol, intentional self-harm, sequela	Mental Health	Suicide
MBD034	T520X2S	Toxic effect of petroleum products, intentional self-harm, sequela	Mental Health	Suicide
MBD034	T521X2S	Toxic effect of benzene, intentional self-harm, sequela	Mental Health	Suicide
MBD034	T522X2S	Toxic effect of homologues of benzene, intentional self-harm, sequela	Mental Health	Suicide
MBD034	T523X2S	Toxic effect of glycols, intentional self-harm, sequela	Mental Health	Suicide
MBD034	T524X2S	Toxic effect of ketones, intentional self-harm, sequela	Mental Health	Suicide
MBD034	T528X2S	Toxic effect of other organic solvents, intentional self-harm, sequela	Mental Health	Suicide
MBD034	T5292XS	Toxic effect of unspecified organic solvent, intentional self-harm, sequela	Mental Health	Suicide
MBD034	T530X2S	Toxic effect of carbon tetrachloride, intentional self-harm, sequela	Mental Health	Suicide

CCSR CATEGORY	ICD-10 CODE	ICD-10 CODE DESCRIPTION	OVERALL BH CATEGORY	BH DIAGNOSIS CATEGORY
MBD034	T531X2S	Toxic effect of chloroform, intentional self-harm, sequela	Mental Health	Suicide
MBD034	T532X2S	Toxic effect of trichloroethylene, intentional self-harm, sequela	Mental Health	Suicide
MBD034	T533X2S	Toxic effect of tetrachloroethylene, intentional self-harm, sequela	Mental Health	Suicide
MBD034	T534X2S	Toxic effect of dichloromethane, intentional self-harm, sequela	Mental Health	Suicide
MBD034	T535X2S	Toxic effect of chlorofluorocarbons, intentional self-harm, sequela	Mental Health	Suicide
MBD034	T536X2S	Toxic effect of other halogen derivatives of aliphatic hydrocarbons, intentional self-harm, sequela	Mental Health	Suicide
MBD034	T537X2S	Toxic effect of other halogen derivatives of aromatic hydrocarbons, intentional self-harm, sequela	Mental Health	Suicide
MBD034	T5392XS	Toxic effect of unspecified halogen derivatives of aliphatic and aromatic hydrocarbons, intentional self-harm, sequela	Mental Health	Suicide
MBD034	T540X2S	Toxic effect of phenol and phenol homologues, intentional self-harm, sequela	Mental Health	Suicide
MBD034	T541X2S	Toxic effect of other corrosive organic compounds, intentional self-harm, sequela	Mental Health	Suicide
MBD034	T542X2S	Toxic effect of corrosive acids and acid-like substances, intentional self-harm, sequela	Mental Health	Suicide
MBD034	T543X2S	Toxic effect of corrosive alkalis and alkali-like substances, intentional self-harm, sequela	Mental Health	Suicide
MBD034	T5492XS	Toxic effect of unspecified corrosive substance, intentional self-harm, sequela	Mental Health	Suicide
MBD034	T550X2S	Toxic effect of soaps, intentional self-harm, sequela	Mental Health	Suicide
MBD034	T551X2S	Toxic effect of detergents, intentional self-harm, sequela	Mental Health	Suicide
MBD034	T560X2S	Toxic effect of lead and its compounds, intentional self-harm, sequela	Mental Health	Suicide
MBD034	T561X2S	Toxic effect of mercury and its compounds, intentional self-harm, sequela	Mental Health	Suicide
MBD034	T562X2S	Toxic effect of chromium and its compounds, intentional self-harm, sequela	Mental Health	Suicide
MBD034	T563X2S	Toxic effect of cadmium and its compounds, intentional self-harm, sequela	Mental Health	Suicide
MBD034	T564X2S	Toxic effect of copper and its compounds, intentional self-harm, sequela	Mental Health	Suicide
MBD034	T565X2S	Toxic effect of zinc and its compounds, intentional self-harm, sequela	Mental Health	Suicide
MBD034	T566X2S	Toxic effect of tin and its compounds, intentional self-harm, sequela	Mental Health	Suicide

CCSR CATEGORY	ICD-10 CODE	ICD-10 CODE DESCRIPTION	OVERALL BH CATEGORY	BH DIAGNOSIS CATEGORY
MBD034	T567X2S	Toxic effect of beryllium and its compounds, intentional self-harm, sequela	Mental Health	Suicide
MBD034	T56812S	Toxic effect of thallium, intentional self-harm, sequela	Mental Health	Suicide
MBD034	T56892S	Toxic effect of other metals, intentional self-harm, sequela	Mental Health	Suicide
MBD034	T5692XS	Toxic effect of unspecified metal, intentional self-harm, sequela	Mental Health	Suicide
MBD034	T570X2S	Toxic effect of arsenic and its compounds, intentional self-harm, sequela	Mental Health	Suicide
MBD034	T571X2S	Toxic effect of phosphorus and its compounds, intentional self-harm, sequela	Mental Health	Suicide
MBD034	T572X2S	Toxic effect of manganese and its compounds, intentional self-harm, sequela	Mental Health	Suicide
MBD034	T573X2S	Toxic effect of hydrogen cyanide, intentional self-harm, sequela	Mental Health	Suicide
MBD034	T578X2S	Toxic effect of other specified inorganic substances, intentional self-harm, sequela	Mental Health	Suicide
MBD034	T5792XS	Toxic effect of unspecified inorganic substance, intentional self-harm, sequela	Mental Health	Suicide
MBD034	T5802XS	Toxic effect of carbon monoxide from motor vehicle exhaust, intentional self-harm, sequela	Mental Health	Suicide
MBD034	T5812XS	Toxic effect of carbon monoxide from utility gas, intentional self-harm, sequela	Mental Health	Suicide
MBD034	T582X2S	Toxic effect of carbon monoxide from incomplete combustion of other domestic fuels, intentional self-harm, sequela	Mental Health	Suicide
MBD034	T588X2S	Toxic effect of carbon monoxide from other source, intentional self-harm, sequela	Mental Health	Suicide
MBD034	T5892XS	Toxic effect of carbon monoxide from unspecified source, intentional self-harm, sequela	Mental Health	Suicide
MBD034	T590X2S	Toxic effect of nitrogen oxides, intentional self-harm, sequela	Mental Health	Suicide
MBD034	T591X2S	Toxic effect of sulfur dioxide, intentional self-harm, sequela	Mental Health	Suicide
MBD034	T592X2S	Toxic effect of formaldehyde, intentional self-harm, sequela	Mental Health	Suicide
MBD034	T593X2S	Toxic effect of lacrimogenic gas, intentional self-harm, sequela	Mental Health	Suicide
MBD034	T594X2S	Toxic effect of chlorine gas, intentional self-harm, sequela	Mental Health	Suicide
MBD034	T595X2S	Toxic effect of fluorine gas and hydrogen fluoride, intentional self-harm, sequela	Mental Health	Suicide
MBD034	T596X2S	Toxic effect of hydrogen sulfide, intentional self-harm, sequela	Mental Health	Suicide

CCSR CATEGORY	ICD-10 CODE	ICD-10 CODE DESCRIPTION	OVERALL BH CATEGORY	BH DIAGNOSIS CATEGORY
MBD034	T597X2S	Toxic effect of carbon dioxide, intentional self-harm, sequela	Mental Health	Suicide
MBD034	T59812S	Toxic effect of smoke, intentional self-harm, sequela	Mental Health	Suicide
MBD034	T59892S	Toxic effect of other specified gases, fumes and vapors, intentional self-harm, sequela	Mental Health	Suicide
MBD034	T5992XS	Toxic effect of unspecified gases, fumes and vapors, intentional self-harm, sequela	Mental Health	Suicide
MBD034	T600X2S	Toxic effect of organophosphate and carbamate insecticides, intentional self-harm, sequela	Mental Health	Suicide
MBD034	T601X2S	Toxic effect of halogenated insecticides, intentional self-harm, sequela	Mental Health	Suicide
MBD034	T602X2S	Toxic effect of other insecticides, intentional self-harm, sequela	Mental Health	Suicide
MBD034	T603X2S	Toxic effect of herbicides and fungicides, intentional self-harm, sequela	Mental Health	Suicide
MBD034	T604X2S	Toxic effect of rodenticides, intentional self-harm, sequela	Mental Health	Suicide
MBD034	T608X2S	Toxic effect of other pesticides, intentional self-harm, sequela	Mental Health	Suicide
MBD034	T6092XS	Toxic effect of unspecified pesticide, intentional self-harm, sequela	Mental Health	Suicide
MBD034	T6102XS	Ciguatera fish poisoning, intentional self-harm, sequela	Mental Health	Suicide
MBD034	T6112XS	Scombroid fish poisoning, intentional self-harm, sequela	Mental Health	Suicide
MBD034	T61772S	Other fish poisoning, intentional self-harm, sequela	Mental Health	Suicide
MBD034	T61782S	Other shellfish poisoning, intentional self-harm, sequela	Mental Health	Suicide
MBD034	T618X2S	Toxic effect of other seafood, intentional self-harm, sequela	Mental Health	Suicide
MBD034	T6192XS	Toxic effect of unspecified seafood, intentional self-harm, sequela	Mental Health	Suicide
MBD034	T620X2S	Toxic effect of ingested mushrooms, intentional self-harm, sequela	Mental Health	Suicide
MBD034	T621X2S	Toxic effect of ingested berries, intentional self-harm, sequela	Mental Health	Suicide
MBD034	T622X2S	Toxic effect of other ingested (parts of) plant(s), intentional self-harm, sequela	Mental Health	Suicide
MBD034	T628X2S	Toxic effect of other specified noxious substances eaten as food, intentional self-harm, sequela	Mental Health	Suicide
MBD034	T6292XS	Toxic effect of unspecified noxious substance eaten as food, intentional self-harm, sequela	Mental Health	Suicide

CCSR CATEGORY	ICD-10 CODE	ICD-10 CODE DESCRIPTION	OVERALL BH CATEGORY	BH DIAGNOSIS CATEGORY
MBD034	T63002S	Toxic effect of unspecified snake venom, intentional self-harm, sequela	Mental Health	Suicide
MBD034	T63012S	Toxic effect of rattlesnake venom, intentional self-harm, sequela	Mental Health	Suicide
MBD034	T63022S	Toxic effect of coral snake venom, intentional self-harm, sequela	Mental Health	Suicide
MBD034	T63032S	Toxic effect of taipan venom, intentional self-harm, sequela	Mental Health	Suicide
MBD034	T63042S	Toxic effect of cobra venom, intentional self-harm, sequela	Mental Health	Suicide
MBD034	T63062S	Toxic effect of venom of other North and South American snake, intentional self-harm, sequela	Mental Health	Suicide
MBD034	T63072S	Toxic effect of venom of other Australian snake, intentional self-harm, sequela	Mental Health	Suicide
MBD034	T63082S	Toxic effect of venom of other African and Asian snake, intentional self-harm, sequela	Mental Health	Suicide
MBD034	T63092S	Toxic effect of venom of other snake, intentional self-harm, sequela	Mental Health	Suicide
MBD034	T63112S	Toxic effect of venom of gila monster, intentional self-harm, sequela	Mental Health	Suicide
MBD034	T63122S	Toxic effect of venom of other venomous lizard, intentional self-harm, sequela	Mental Health	Suicide
MBD034	T63192S	Toxic effect of venom of other reptiles, intentional self-harm, sequela	Mental Health	Suicide
MBD034	T632X2S	Toxic effect of venom of scorpion, intentional self-harm, sequela	Mental Health	Suicide
MBD034	T63302S	Toxic effect of unspecified spider venom, intentional self-harm, sequela	Mental Health	Suicide
MBD034	T63312S	Toxic effect of venom of black widow spider, intentional self-harm, sequela	Mental Health	Suicide
MBD034	T63322S	Toxic effect of venom of tarantula, intentional self-harm, sequela	Mental Health	Suicide
MBD034	T63332S	Toxic effect of venom of brown recluse spider, intentional self-harm, sequela	Mental Health	Suicide
MBD034	T63392S	Toxic effect of venom of other spider, intentional self-harm, sequela	Mental Health	Suicide
MBD034	T63412S	Toxic effect of venom of centipedes and venomous millipedes, intentional self-harm, sequela	Mental Health	Suicide
MBD034	T63422S	Toxic effect of venom of ants, intentional self-harm, sequela	Mental Health	Suicide
MBD034	T63432S	Toxic effect of venom of caterpillars, intentional self-harm, sequela	Mental Health	Suicide
MBD034	T63442S	Toxic effect of venom of bees, intentional self-harm, sequela	Mental Health	Suicide

CCSR CATEGORY	ICD-10 CODE	ICD-10 CODE DESCRIPTION	OVERALL BH CATEGORY	BH DIAGNOSIS CATEGORY
MBD034	T63452S	Toxic effect of venom of hornets, intentional self-harm, sequela	Mental Health	Suicide
MBD034	T63462S	Toxic effect of venom of wasps, intentional self-harm, sequela	Mental Health	Suicide
MBD034	T63482S	Toxic effect of venom of other arthropod, intentional self-harm, sequela	Mental Health	Suicide
MBD034	T63512S	Toxic effect of contact with stingray, intentional self-harm, sequela	Mental Health	Suicide
MBD034	T63592S	Toxic effect of contact with other venomous fish, intentional self-harm, sequela	Mental Health	Suicide
MBD034	T63612S	Toxic effect of contact with Portugese Man-o-war, intentional self-harm, sequela	Mental Health	Suicide
MBD034	T63622S	Toxic effect of contact with other jellyfish, intentional self-harm, sequela	Mental Health	Suicide
MBD034	T63632S	Toxic effect of contact with sea anemone, intentional self-harm, sequela	Mental Health	Suicide
MBD034	T63692S	Toxic effect of contact with other venomous marine animals, intentional self-harm, sequela	Mental Health	Suicide
MBD034	T63712S	Toxic effect of contact with venomous marine plant, intentional self-harm, sequela	Mental Health	Suicide
MBD034	T63792S	Toxic effect of contact with other venomous plant, intentional self-harm, sequela	Mental Health	Suicide
MBD034	T63812S	Toxic effect of contact with venomous frog, intentional self-harm, sequela	Mental Health	Suicide
MBD034	T63822S	Toxic effect of contact with venomous toad, intentional self-harm, sequela	Mental Health	Suicide
MBD034	T63832S	Toxic effect of contact with other venomous amphibian, intentional self-harm, sequela	Mental Health	Suicide
MBD034	T63892S	Toxic effect of contact with other venomous animals, intentional self-harm, sequela	Mental Health	Suicide
MBD034	T6392XS	Toxic effect of contact with unspecified venomous animal, intentional self-harm, sequela	Mental Health	Suicide
MBD034	T6402XS	Toxic effect of aflatoxin, intentional self-harm, sequela	Mental Health	Suicide
MBD034	T6482XS	Toxic effect of other mycotoxin food contaminants, intentional self-harm, sequela	Mental Health	Suicide
MBD034	T650X2S	Toxic effect of cyanides, intentional self-harm, sequela	Mental Health	Suicide
MBD034	T651X2S	Toxic effect of strychnine and its salts, intentional self-harm, sequela	Mental Health	Suicide
MBD034	T65212S	Toxic effect of chewing tobacco, intentional self-harm, sequela	Mental Health	Suicide
MBD034	T65222S	Toxic effect of tobacco cigarettes, intentional self-harm, sequela	Mental Health	Suicide

CCSR CATEGORY	ICD-10 CODE	ICD-10 CODE DESCRIPTION	OVERALL BH CATEGORY	BH DIAGNOSIS CATEGORY
MBD034	T65292S	Toxic effect of other tobacco and nicotine, intentional self-harm, sequela	Mental Health	Suicide
MBD034	T653X2S	Toxic effect of nitroderivatives and aminoderivatives of benzene and its homologues, intentional self-harm, sequela	Mental Health	Suicide
MBD034	T654X2S	Toxic effect of carbon disulfide, intentional self-harm, sequela	Mental Health	Suicide
MBD034	T655X2S	Toxic effect of nitroglycerin and other nitric acids and esters, intentional self-harm, sequela	Mental Health	Suicide
MBD034	T656X2S	Toxic effect of paints and dyes, not elsewhere classified, intentional self-harm, sequela	Mental Health	Suicide
MBD034	T65812S	Toxic effect of latex, intentional self-harm, sequela	Mental Health	Suicide
MBD034	T65822S	Toxic effect of harmful algae and algae toxins, intentional self-harm, sequela	Mental Health	Suicide
MBD034	T65832S	Toxic effect of fiberglass, intentional self-harm, sequela	Mental Health	Suicide
MBD034	T65892S	Toxic effect of other specified substances, intentional self-harm, sequela	Mental Health	Suicide
MBD034	T6592XS	Toxic effect of unspecified substance, intentional self-harm, sequela	Mental Health	Suicide
MBD034	T71112S	Asphyxiation due to smothering under pillow, intentional self-harm, sequela	Mental Health	Suicide
MBD034	T71122S	Asphyxiation due to plastic bag, intentional self-harm, sequela	Mental Health	Suicide
MBD034	T71132S	Asphyxiation due to being trapped in bed linens, intentional self-harm, sequela	Mental Health	Suicide
MBD034	T71152S	Asphyxiation due to smothering in furniture, intentional self-harm, sequela	Mental Health	Suicide
MBD034	T71162S	Asphyxiation due to hanging, intentional self-harm, sequela	Mental Health	Suicide
MBD034	T71192S	Asphyxiation due to mechanical threat to breathing due to other causes, intentional self-harm, sequela	Mental Health	Suicide
MBD034	T71222S	Asphyxiation due to being trapped in a car trunk, intentional self-harm, sequela	Mental Health	Suicide
MBD034	T71232S	Asphyxiation due to being trapped in a (discarded) refrigerator, intentional self-harm, sequela	Mental Health	Suicide
MBD034	X710XXS	Intentional self-harm by drowning and submersion while in bathtub, sequela	Mental Health	Suicide
MBD034	X711XXS	Intentional self-harm by drowning and submersion while in swimming pool, sequela	Mental Health	Suicide
MBD034	X712XXS	Intentional self-harm by drowning and submersion after jump into swimming pool, sequela	Mental Health	Suicide

CCSR CATEGORY	ICD-10 CODE	ICD-10 CODE DESCRIPTION	OVERALL BH CATEGORY	BH DIAGNOSIS CATEGORY
MBD034	X713XXS	Intentional self-harm by drowning and submersion in natural water, sequela	Mental Health	Suicide
MBD034	X718XXS	Other intentional self-harm by drowning and submersion, sequela	Mental Health	Suicide
MBD034	X719XXS	Intentional self-harm by drowning and submersion, unspecified, sequela	Mental Health	Suicide
MBD034	X72XXXS	Intentional self-harm by handgun discharge, sequela	Mental Health	Suicide
MBD034	X730XXS	Intentional self-harm by shotgun discharge, sequela	Mental Health	Suicide
MBD034	X731XXS	Intentional self-harm by hunting rifle discharge, sequela	Mental Health	Suicide
MBD034	X732XXS	Intentional self-harm by machine gun discharge, sequela	Mental Health	Suicide
MBD034	X738XXS	Intentional self-harm by other larger firearm discharge, sequela	Mental Health	Suicide
MBD034	X739XXS	Intentional self-harm by unspecified larger firearm discharge, sequela	Mental Health	Suicide
MBD034	X7401XS	Intentional self-harm by airgun, sequela	Mental Health	Suicide
MBD034	X7402XS	Intentional self-harm by paintball gun, sequela	Mental Health	Suicide
MBD034	X7409XS	Intentional self-harm by other gas, air or spring-operated gun, sequela	Mental Health	Suicide
MBD034	X748XXS	Intentional self-harm by other firearm discharge, sequela	Mental Health	Suicide
MBD034	X749XXS	Intentional self-harm by unspecified firearm discharge, sequela	Mental Health	Suicide
MBD034	X75XXXS	Intentional self-harm by explosive material, sequela	Mental Health	Suicide
MBD034	X76XXXS	Intentional self-harm by smoke, fire and flames, sequela	Mental Health	Suicide
MBD034	X770XXS	Intentional self-harm by steam or hot vapors, sequela	Mental Health	Suicide
MBD034	X771XXS	Intentional self-harm by hot tap water, sequela	Mental Health	Suicide
MBD034	X772XXS	Intentional self-harm by other hot fluids, sequela	Mental Health	Suicide
MBD034	X773XXS	Intentional self-harm by hot household appliances, sequela	Mental Health	Suicide
MBD034	X778XXS	Intentional self-harm by other hot objects, sequela	Mental Health	Suicide
MBD034	X779XXS	Intentional self-harm by unspecified hot objects, sequela	Mental Health	Suicide
MBD034	X780XXS	Intentional self-harm by sharp glass, sequela	Mental Health	Suicide
MBD034	X781XXS	Intentional self-harm by knife, sequela	Mental Health	Suicide
MBD034	X782XXS	Intentional self-harm by sword or dagger, sequela	Mental Health	Suicide
MBD034	X788XXS	Intentional self-harm by other sharp object, sequela	Mental Health	Suicide

CCSR CATEGORY	ICD-10 CODE	ICD-10 CODE DESCRIPTION	OVERALL BH CATEGORY	BH DIAGNOSIS CATEGORY
MBD034	X789XXS	Intentional self-harm by unspecified sharp object, sequela	Mental Health	Suicide
MBD034	X79XXXS	Intentional self-harm by blunt object, sequela	Mental Health	Suicide
MBD034	X80XXXS	Intentional self-harm by jumping from a high place, sequela	Mental Health	Suicide
MBD034	X810XXS	Intentional self-harm by jumping or lying in front of motor vehicle, sequela	Mental Health	Suicide
MBD034	X811XXS	Intentional self-harm by jumping or lying in front of (subway) train, sequela	Mental Health	Suicide
MBD034	X818XXS	Intentional self-harm by jumping or lying in front of other moving object, sequela	Mental Health	Suicide
MBD034	X828XXS	Other intentional self-harm by crashing of motor vehicle, sequela	Mental Health	Suicide
MBD034	X830XXS	Intentional self-harm by crashing of aircraft, sequela	Mental Health	Suicide
MBD034	X831XXS	Intentional self-harm by electrocution, sequela	Mental Health	Suicide
MBD034	X832XXS	Intentional self-harm by exposure to extremes of cold, sequela	Mental Health	Suicide
MBD034	X838XXS	Intentional self-harm by other specified means, sequela	Mental Health	Suicide

## Outpatient Behavioral Health Use and Unmet Needs Due to Cost

Estimates reported on outpatient behavioral health visits and unmet need for behavioral health care due to cost come from the 2021 Massachusetts Health Insurance Survey (MHIS). Residents were asked about visits to a mental health professional and visits for alcohol or substance use care or treatment in the past 12 months. Behavioral health care visits include those provided via telehealth. Residents were asked about forgoing behavioral health care that the resident felt was needed in the past 12 months due to the cost of that care.

The MHIS is a statewide, population-based survey of noninstitutionalized Massachusetts residents used to track and monitor health insurance coverage, health care access and use, and health care affordability for Massachusetts residents and their families. The 2021 survey cycle was fielded in English and Spanish between July and December 2021 and collected data on 5,000 residents and their families. All estimates provided from this data source are weighted to provide population-based estimates for the non-institutionalized resident population of the Commonwealth. Additional information about the design of the MHIS is available in the [MHIS methodology report](#).